

FOR SALE | FOR LEASE

NEWBERRY VILLAGE

Gainesville, FL

EST Q3 2027 DELIVERY
SEEKING BEST-IN-CLASS RETAIL,
RESTAURANTS, HOTEL, MEDICAL



±150,000 SF NEW Publix ANCHORED MIXED USE DEVELOPMENT

EXCLUSIVE RETAIL LEASING

KATZ & ASSOCIATES

RETAIL REAL ESTATE ADVISORS

Daniel Solomon, CCIM
PRINCIPAL
danielsolomon@katzretail.com
(954) 401-2181

Jon Cashion
PRINCIPAL
joncashion@katzretail.com
(561) 302-7071

Eric Spritz
VICE PRESIDENT
ericspritz@katzretail.com
(954) 296-5861

Property Overview

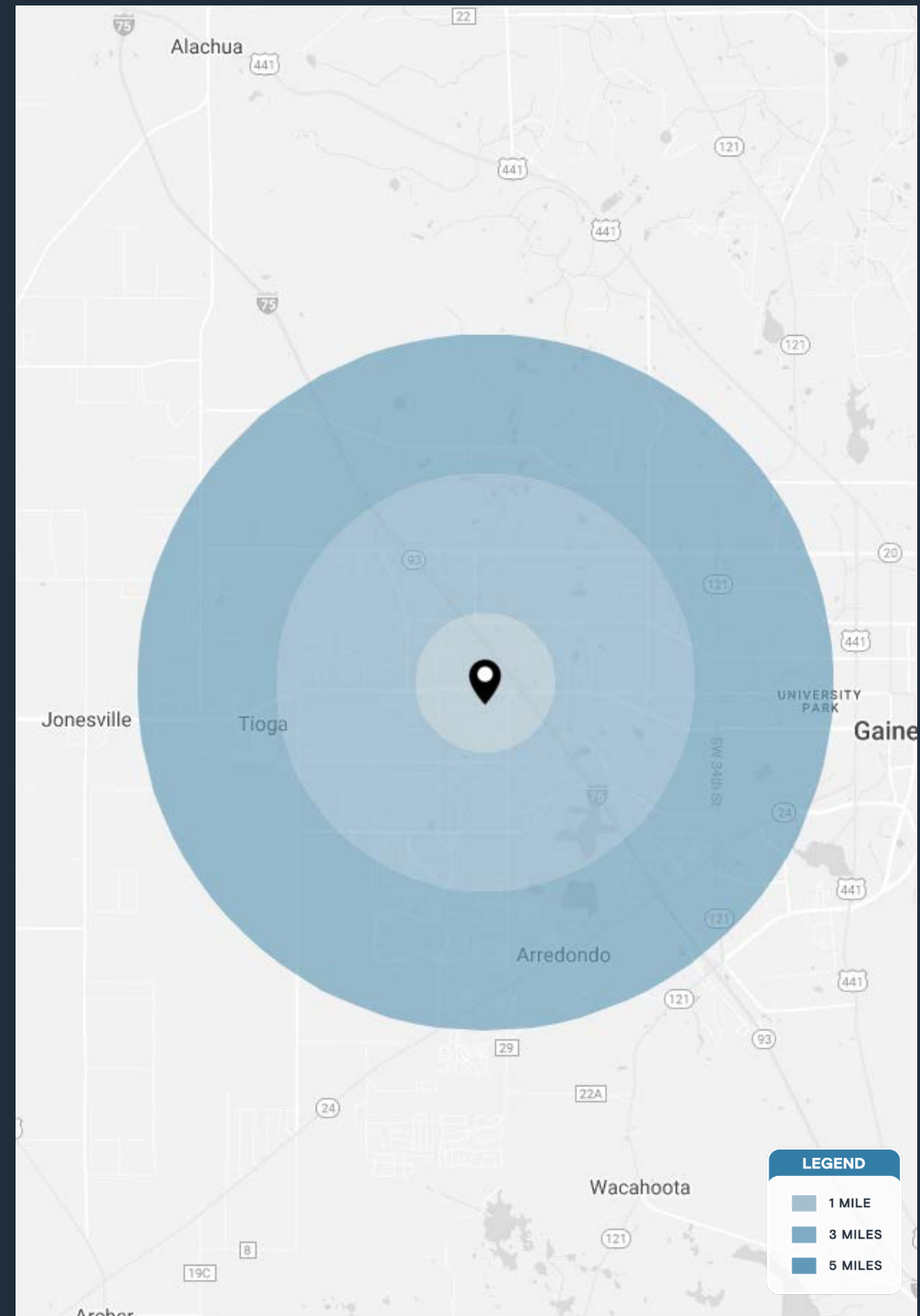
HIGHLIGHTS

- ±84 acre mixed development
- ±150,000 SF retail, restaurants, hotel, medical planned for estimated Q3 2027 as part of a new prominent mixed-use development
- Join ±50,325 SF new **Publix**
- Approximately 650 new luxury apartments connected to the project
- Seeking hotel developers for 113 up to 200 rooms
- Outparcels including several with drive-thru's available
- Two traffic signals
- 0.4 miles west of I-75 exit with 52,000 AADT on W Newberry Road
- Surrounded by national retailers
- Less than 1 mile from HCA Healthcare Hospital with 523 beds
- 1.25 miles from Santa Fe College (14,915 students)
- 4.5 miles from University of Florida (55,000 students; 14,724 faculty & staff)

DEMOGRAPHICS

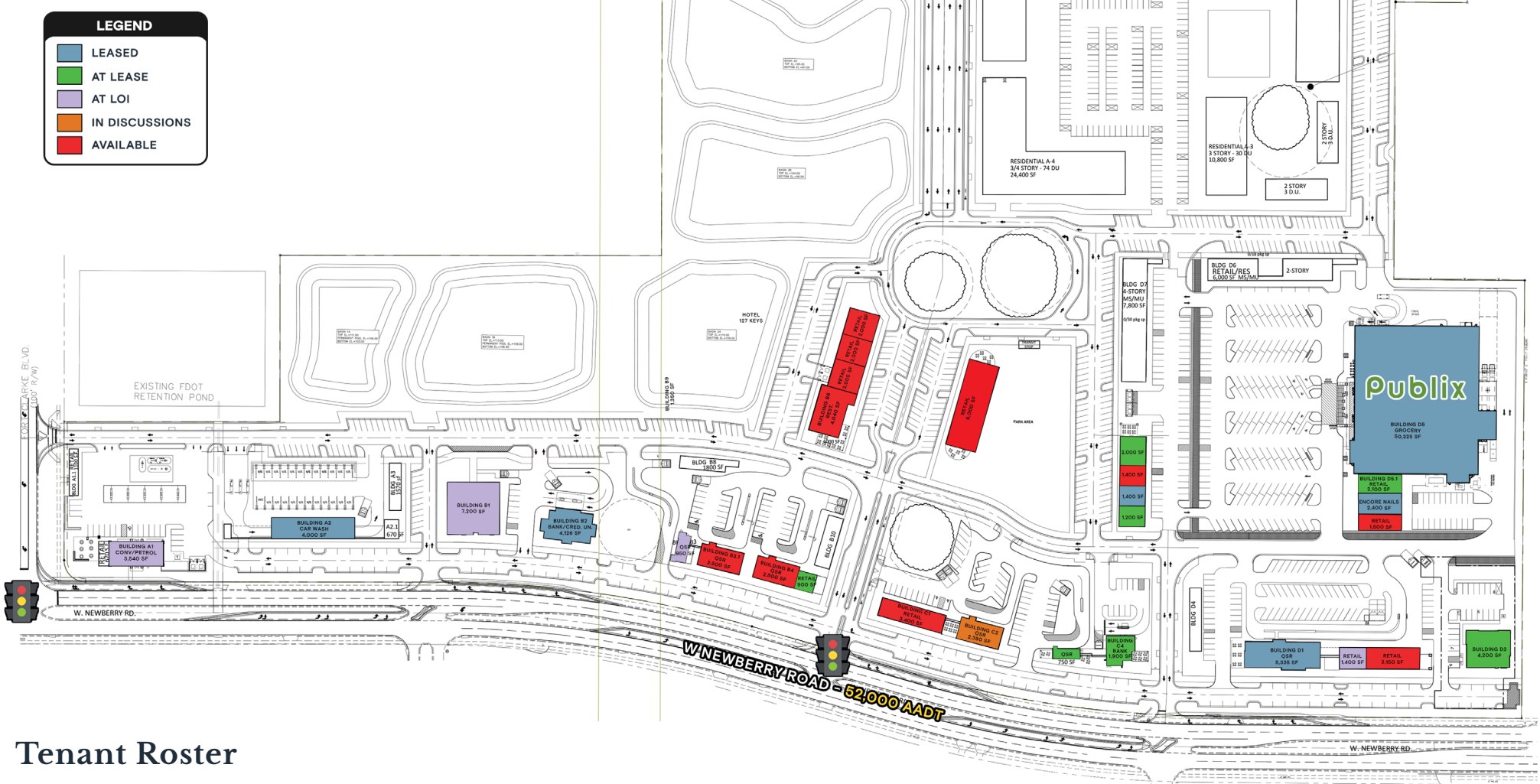
	1 MILE	3 MILES	5 MILES
POPULATION	10,213	62,293	150,955
HOUSEHOLDS	4,103	25,753	61,499
EMPLOYEES	4,168	22,356	62,370
AVERAGE HH INCOME	\$81,786	\$117,276	\$115,808

	5 MINUTES	10 MINUTES	15 MINUTES
POPULATION	26,276	73,273	167,504
HOUSEHOLDS	11,013	30,541	67,254
EMPLOYEES	10,879	29,645	84,275
AVERAGE HH INCOME	\$81,752	\$103,813	\$108,506



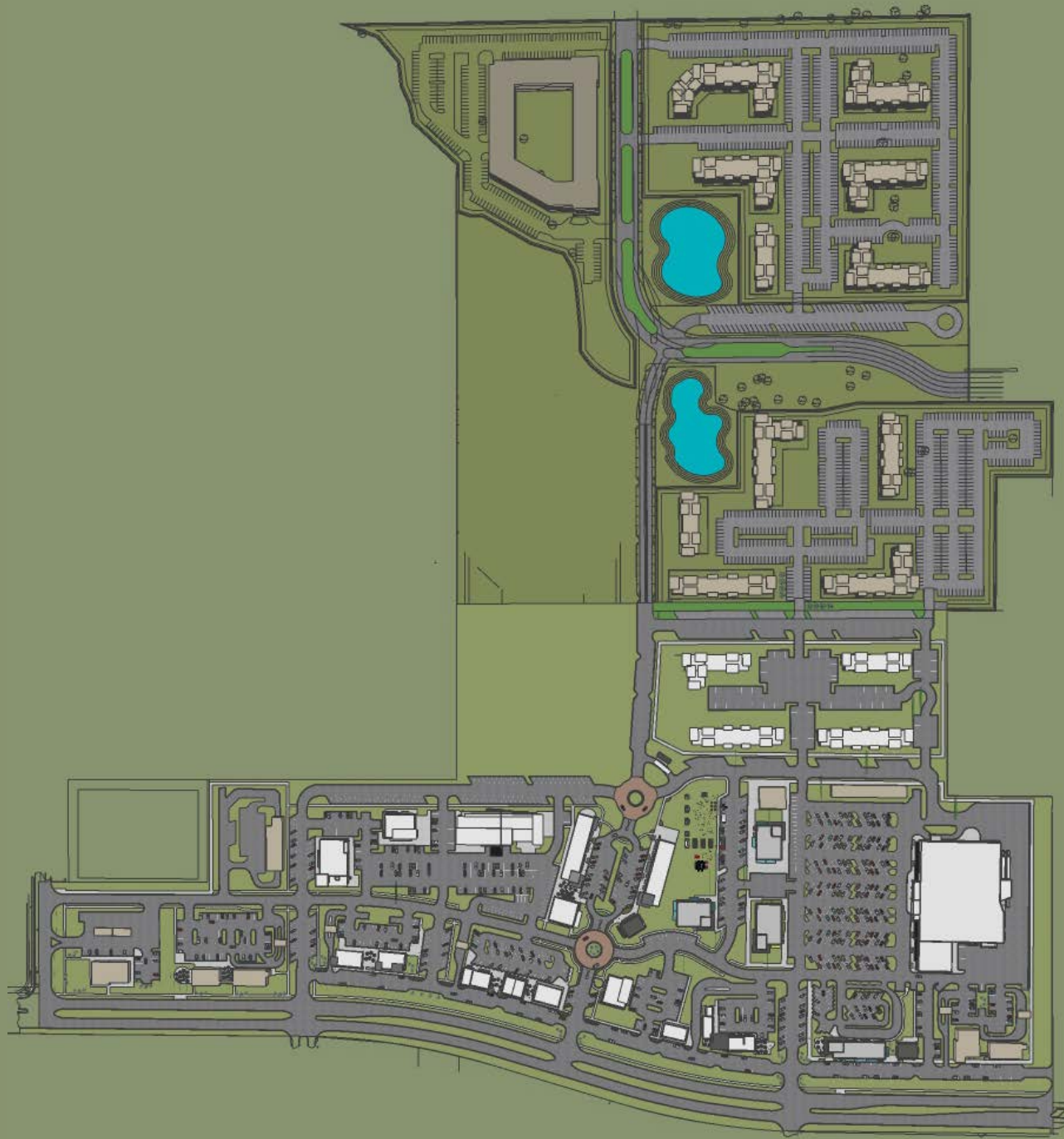
LEGEND

- LEASED
- AT LEASE
- AT LOI
- IN DISCUSSIONS
- AVAILABLE

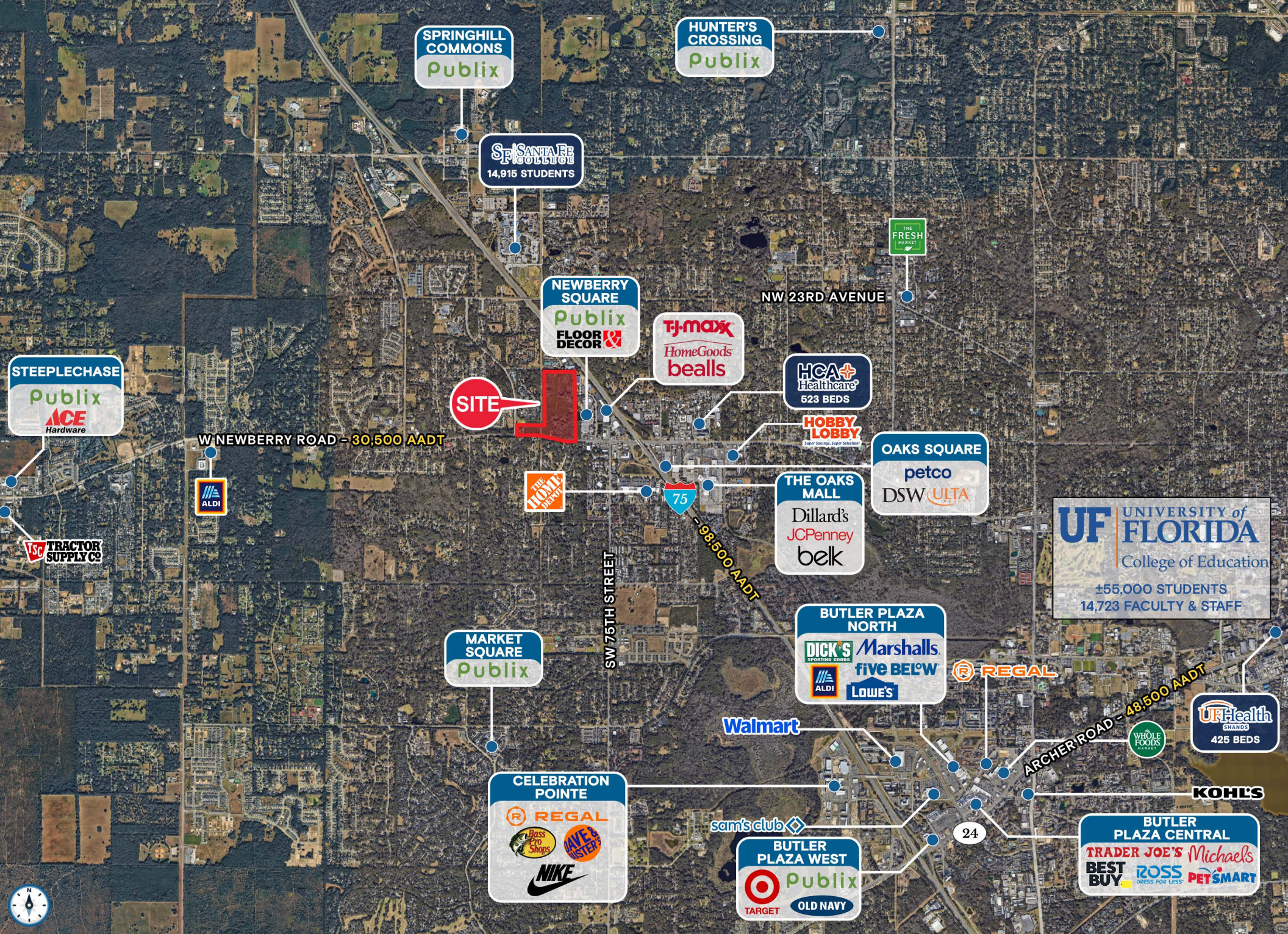


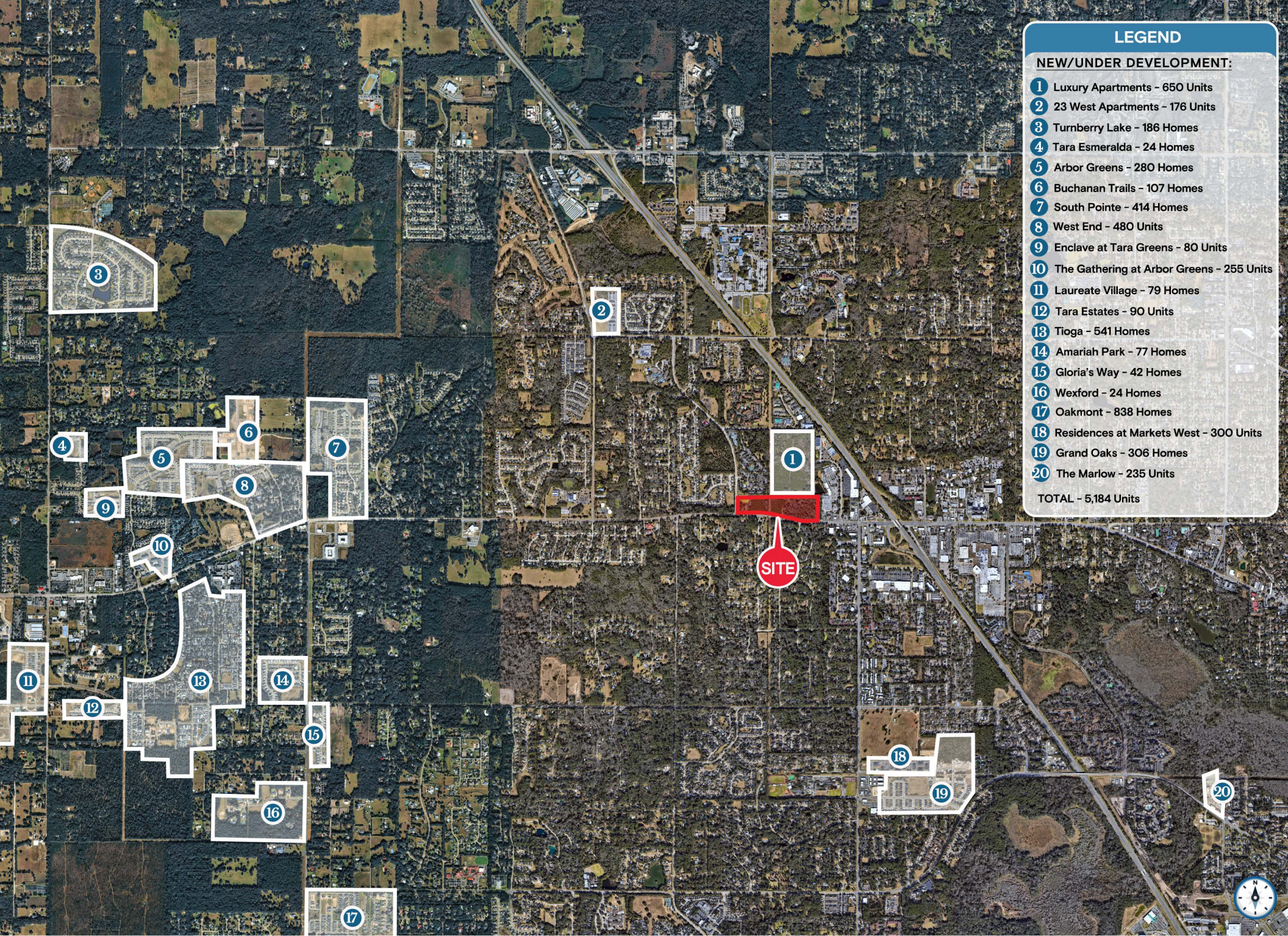
Tenant Roster

A1	Gas/C-Store	3,540 SF	B4	Restaurant	2,500 SF	C1	Retail	3,400 SF	D2.2	Retail	3,150 SF	D7	Retail/Office	±1,000-7,800 SF
A1.1	Retail	1,100 SF	B5	Retail	900 SF	C2	Restaurant	2,380 SF	D3	Dentist	4,000 SF	D9.1	Restaurant	2,000 SF
A2	Big Dan's Car Wash	4,000 SF	B6	Restaurant	4,040 SF	C3	Restaurant	750 SF	D5	Publix	50,325 SF	D9.2	Retail	1,400 SF
B1	Retail	7,200 SF	B7.1	Retail	2,000 SF	C4	Bank	1,900 SF	D5.1	Liquor Store	2,100 SF	D9.3	Hair Cuttery	1,400 SF
B2	Florida Credit Union	4,126 SF	B7.2	Retail	2,000 SF	C7	Retail	±1,200-6,000 SF	D5.2	Encore Nails	2,400 SF	D9.4	Restaurant	1,200 SF
B3	Restaurant	950 SF	B7.3	Retail	2,000 SF	D1	Chick-fil-A	5,335 SF	D5.3	Retail	1,800 SF			
B3.1	Restaurant	2,500 SF	B8	Retail	1,800 SF	D2.1	Retail	1,400 SF	D6	Retail	6,000 SF			









LEGEND

NEW/UNDER DEVELOPMENT:

- 1 Luxury Apartments - 650 Units
- 2 23 West Apartments - 176 Units
- 3 Turnberry Lake - 186 Homes
- 4 Tara Esmeralda - 24 Homes
- 5 Arbor Greens - 280 Homes
- 6 Buchanan Trails - 107 Homes
- 7 South Pointe - 414 Homes
- 8 West End - 480 Units
- 9 Enclave at Tara Greens - 80 Units
- 10 The Gathering at Arbor Greens - 255 Units
- 11 Laureate Village - 79 Homes
- 12 Tara Estates - 90 Units
- 13 Tioga - 541 Homes
- 14 Amariah Park - 77 Homes
- 15 Gloria's Way - 42 Homes
- 16 Wexford - 24 Homes
- 17 Oakmont - 838 Homes
- 18 Residences at Markets West - 300 Units
- 19 Grand Oaks - 306 Homes
- 20 The Marlow - 235 Units

TOTAL - 5,184 Units



Contact Brokers

Eric Spritz
VICE PRESIDENT
ericspritz@katzretail.com
(954) 296-5861

Daniel Solomon, CCIM
PRINCIPAL
danielsolomon@katzretail.com
(954) 401-2181

Jon Cashion
PRINCIPAL
joncashion@katzretail.com
(561) 302-7071



KATZ & ASSOCIATES

RETAIL REAL ESTATE ADVISORS

katzretail.com

The information herein was obtained from third parties and has not been independently verified by Katz & Associates. Any and all interested parties should have their choice of experts inspect the property and verify all information. Katz & Associates makes no warranties or guarantees as to the information given to any prospective buyer or tenant. REV: 04.28.26