

# PREMIER OFFICE SUITES AVAILABLE FOR LEASE

EVES DRIVE  
CORPORATE  
CENTER



## 4A EVES DRIVE MARLTON, NJ 08053



**Bethany Brown**  
Vice President  
267.226.6602  
[bethany.brown@wolfcre.com](mailto:bethany.brown@wolfcre.com)

The foregoing information was furnished to us by sources which we deem to be reliable, but no warranty or representation is made as to the accuracy thereof.  
Subject to correction of errors, omissions, change of price, prior sale or withdrawal from market without notice.



**Wolf Commercial Real Estate**  
[www.WolfCRE.com](http://www.WolfCRE.com)



## PROPERTY DESCRIPTION

**Location:** 4A Eves Drive  
Marlton, NJ 08053

**Size/SF:** Suite 100: +/- 6,000 SF

**Lease Price:** \$12.00/SF

**Occupancy:** Immediate

**Signage:** Monument tenant directory & suite signage available

## PROPERTY AREA/HIGHLIGHTS

- Efficient layouts with bullpen areas and individual offices
- Ample parking
- Conveniently situated off Route 73
- Two miles from NJ Turnpike, I-295 and Route 70
- Immediate access to various local amenities, national retailers and more



The foregoing information was furnished to us by sources which we deem to be reliable, but no warranty or representation is made as to the accuracy thereof. Subject to correction of errors, omissions, change of price, prior sale or withdrawal from market without notice.



# 4A EVES DRIVE, MARLTON, NJ 08053

## FLOOR PLAN



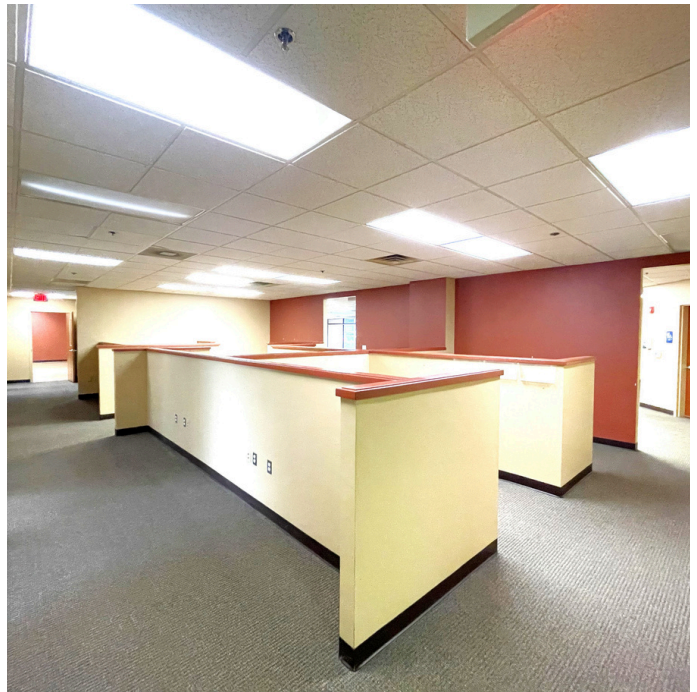
The foregoing information was furnished to us by sources which we deem to be reliable, but no warranty or representation is made as to the accuracy thereof. Subject to correction of errors, omissions, change of price, prior sale or withdrawal from market without notice.





# 4A EVES DRIVE, MARLTON, NJ 08053

## ADDITIONAL PHOTOS



The foregoing information was furnished to us by sources which we deem to be reliable, but no warranty or representation is made as to the accuracy thereof. Subject to correction of errors, omissions, change of price, prior sale or withdrawal from market without notice.