

# INDUSTRIAL SPACE AVAILABLE FOR LEASE

# M

## MARKET STREET BUSINESS PARK

### THE PROPERTY

Market Street Business Park is an infill multi-tenant industrial park offering suites ranging from 600-15,000 SF of space across six buildings. The Park provides easy access to major thoroughfares of I-610 (0.9 Miles) and I-10 (0.5 Miles) by way of Market Street and Mercury Drive.

The park is professionally owned and managed by Pagewood. Significant capital improvements have been completed, including:

- Concrete repairs throughout the site
- New roofs installed and roof repairs completed on all six buildings
- New speculative improvements completed in vacancies, including new rollup doors, AC units, lighting, office & restroom finishes and metal framing, throughout the park
- Substantial improvements completed at 10205 Market Street, a single-tenant 14,500 SF opportunity, including:
  - Exterior building improvements completed including new metal framing and new paint
  - Spec office finishes and new lighting throughout, including a second floor of office plus mezzanine level in the warehouse
  - Concrete repairs completed in the dedicated yard and truck court
- New project branded signage installed throughout



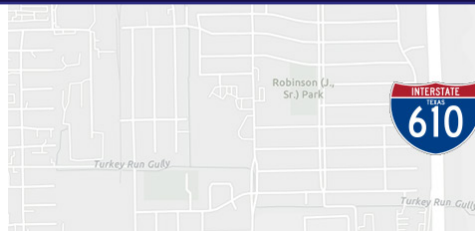
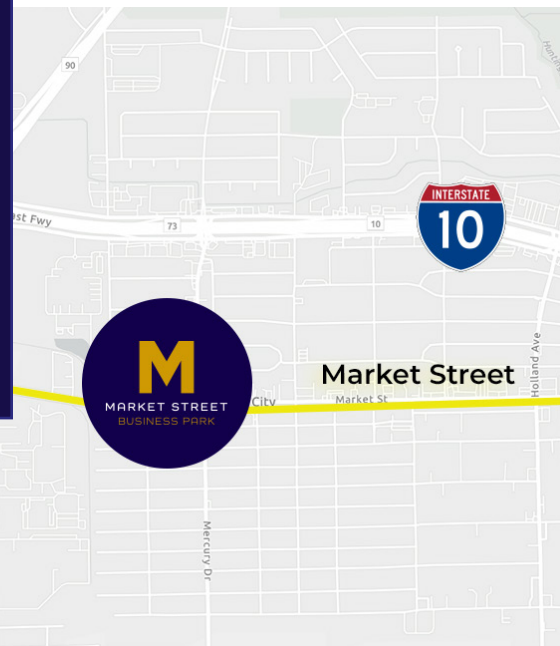
6 TOTAL  
BUILDINGS



MOVE-IN  
READY SUITES



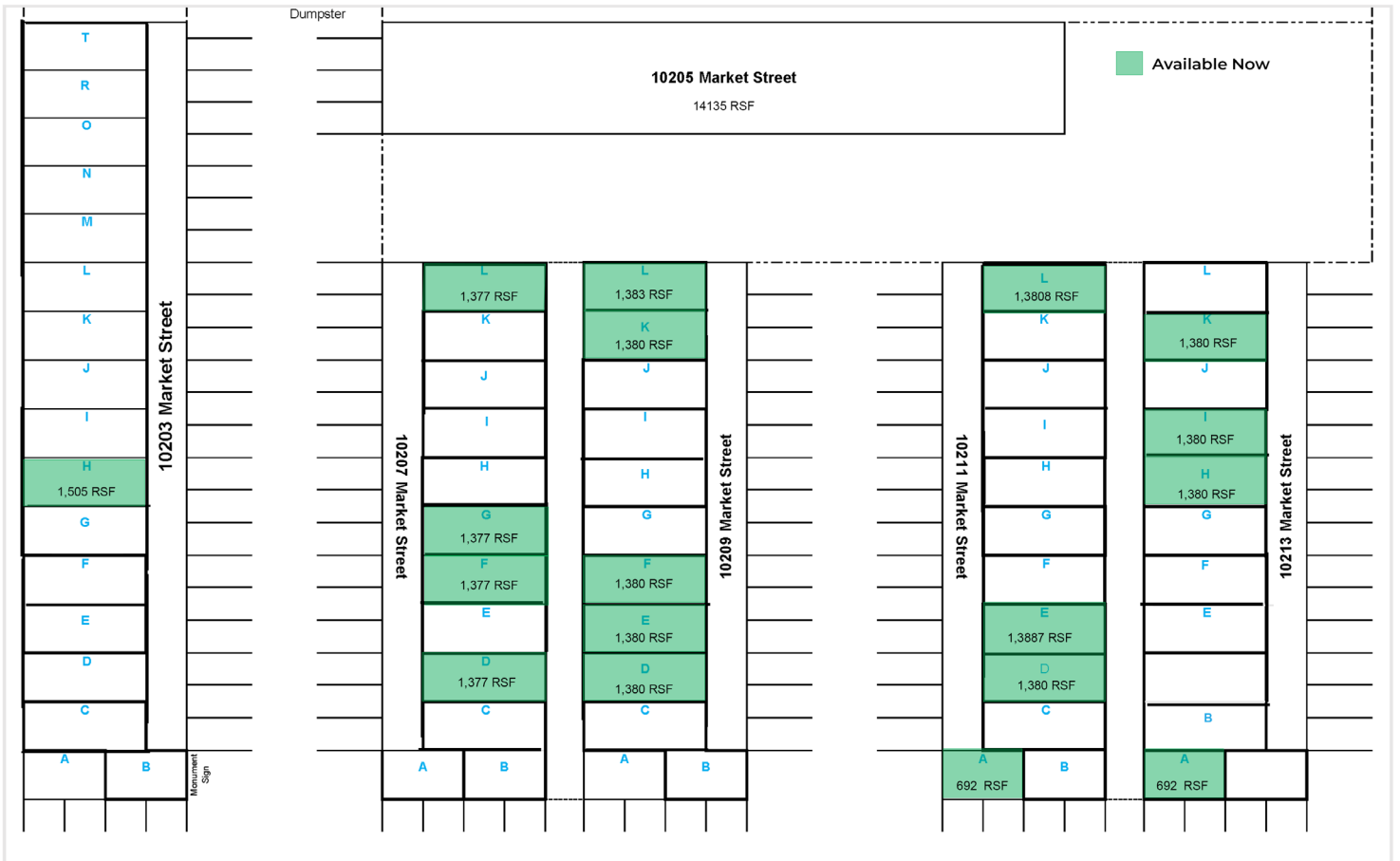
RENOVATIONS  
COMPLETED



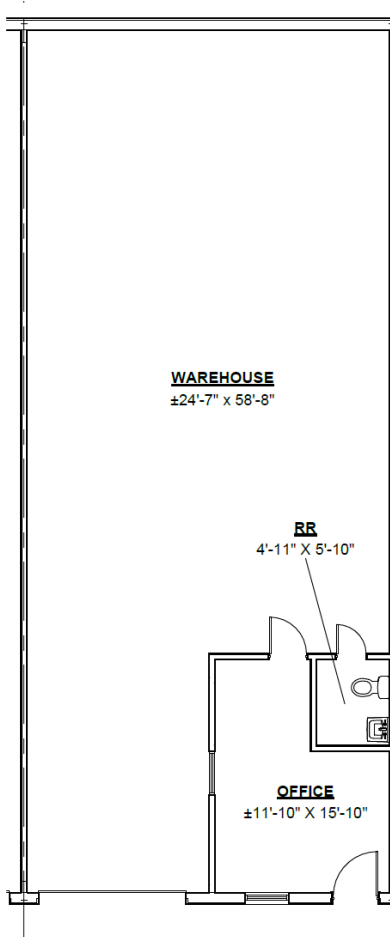


# MARKET STREET BUSINESS PARK

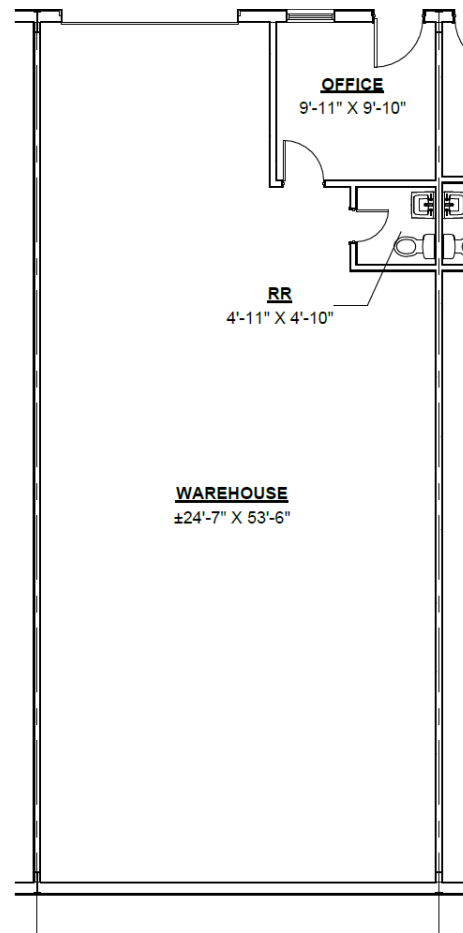
## SITEPLAN



## FLOOR PLANS



STANDARD  
1,505 SF



STANDARD  
1,377 SF



# MARKET STREET BUSINESS PARK

## PARK HIGHLIGHTS

### Building 1:

Building Size: 24,003 SF  
Clear Height: 12'

### Building 2:

Building Size: 15,122 SF  
Clear Height: 12'

### Building 3:

Building Size: 15,124 SF  
Clear Height: 12'

### Building 4:

Building Size: 15,122 SF  
Clear Height: 12'

### Building 5:

Building Size: 15,123 SF  
Clear Height: 12'

### Building 6:

Building Size: 14,435 SF  
Clear Height: 20'

## AMENITIES & FEATURES:

Move-in ready suites available featuring dedicated office space, restrooms, grade-level loading doors and dedicated parking spaces.





LEASED BY:



OWNED & MANAGED BY:

PAGEWOOD®

LEASING CONTACTS:

DALTON FAIRES  
dfaires@alpinecre.net  
405-496-5024

AJ NELSON  
anelston@alpinecre.net  
832-654-4618