



AVISON YOUNG

Mission Bay Office for Lease

290 King Street, Suite 9
San Francisco, CA

Excellent access to Caltrain, Muni

Overview

Size: ±3,751 sf
Asking Rent: Negotiable
Term: 2-5 years
Available: Immediately

Space Highlights



3 private offices, 1
conference room



IT room



Reception area



Furniture available



Kitchen

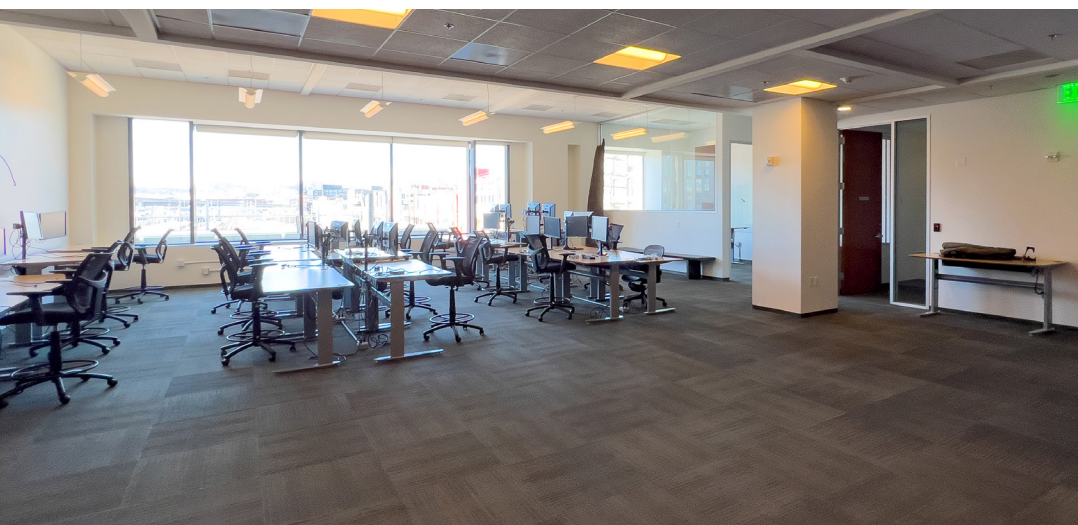


Great natural light

Building Amenities

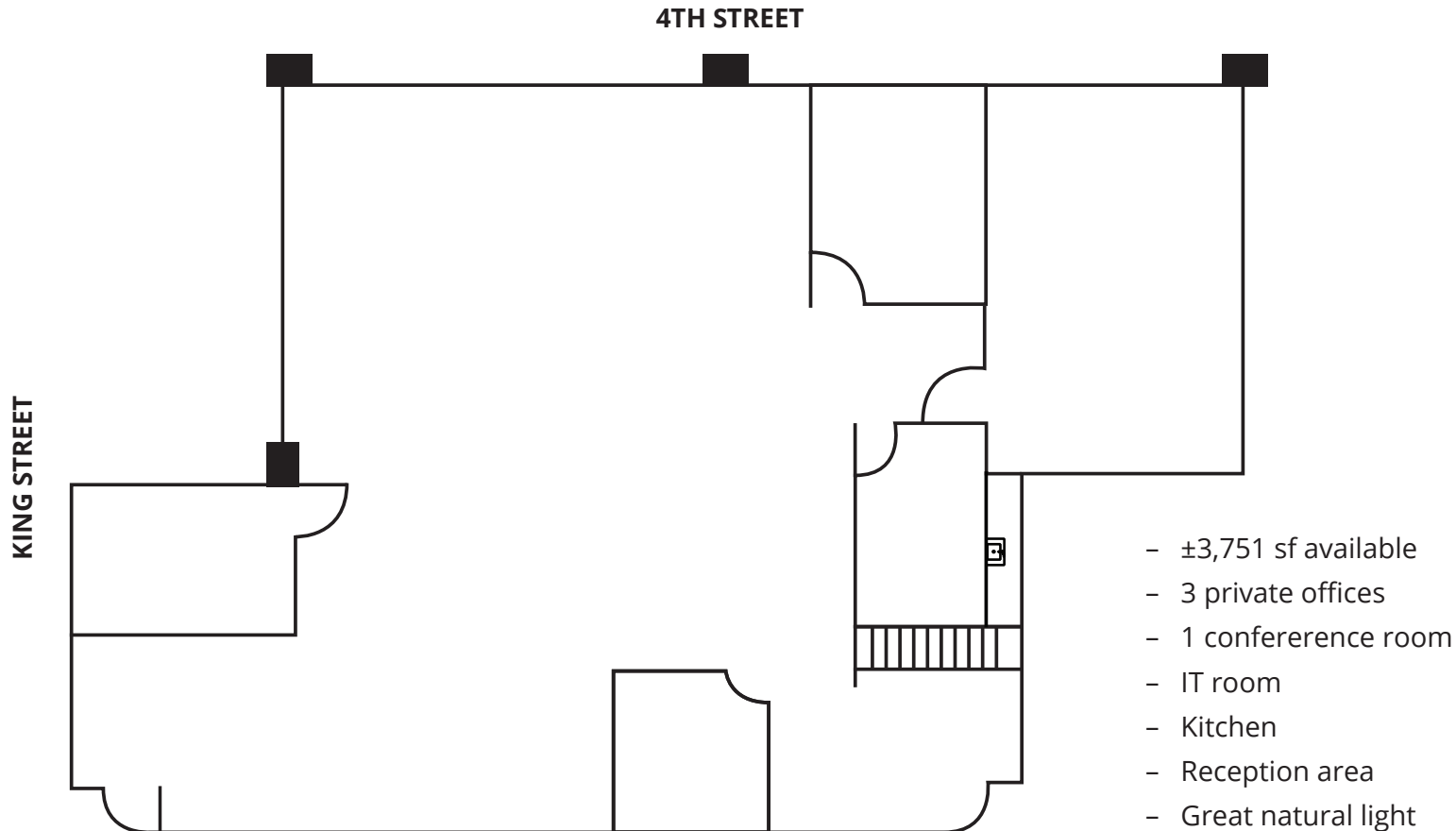
- On-site parking
- On-site retail including Safeway
- Across the street from Caltrain, Muni Metro including direct T Third Street light rail
- One block to the SF Giants stadium
- Walking distance to fine dining, local breweries like Black Hammer Brewing Company

The information contained herein was obtained from sources which we deem reliable and, while thought to be correct, is not guaranteed by Avison Young - Northern California, Ltd.



Mission Bay Office for Lease

290 King Street, Suite 9
San Francisco, CA



**Get more
information**

Will O'Daly
+1 650 703 8336
will.odaly@avisonyoung.com
Re Lic: #02063132

John Cashin
+ 415 640 2963
john.cashin@avisonyoung.com
Re Lic: #01353680

**AVISON
YOUNG**