

JACKSONVILLE MEDICAL MALL PHASE 3 - MEDICAL OFFICE

ORANGE PARK, FLORIDA

INTERIOR IMPROVEMENTS

1731 WELLS RD.

ORANGE PARK, FLORIDA 32073

OWNER

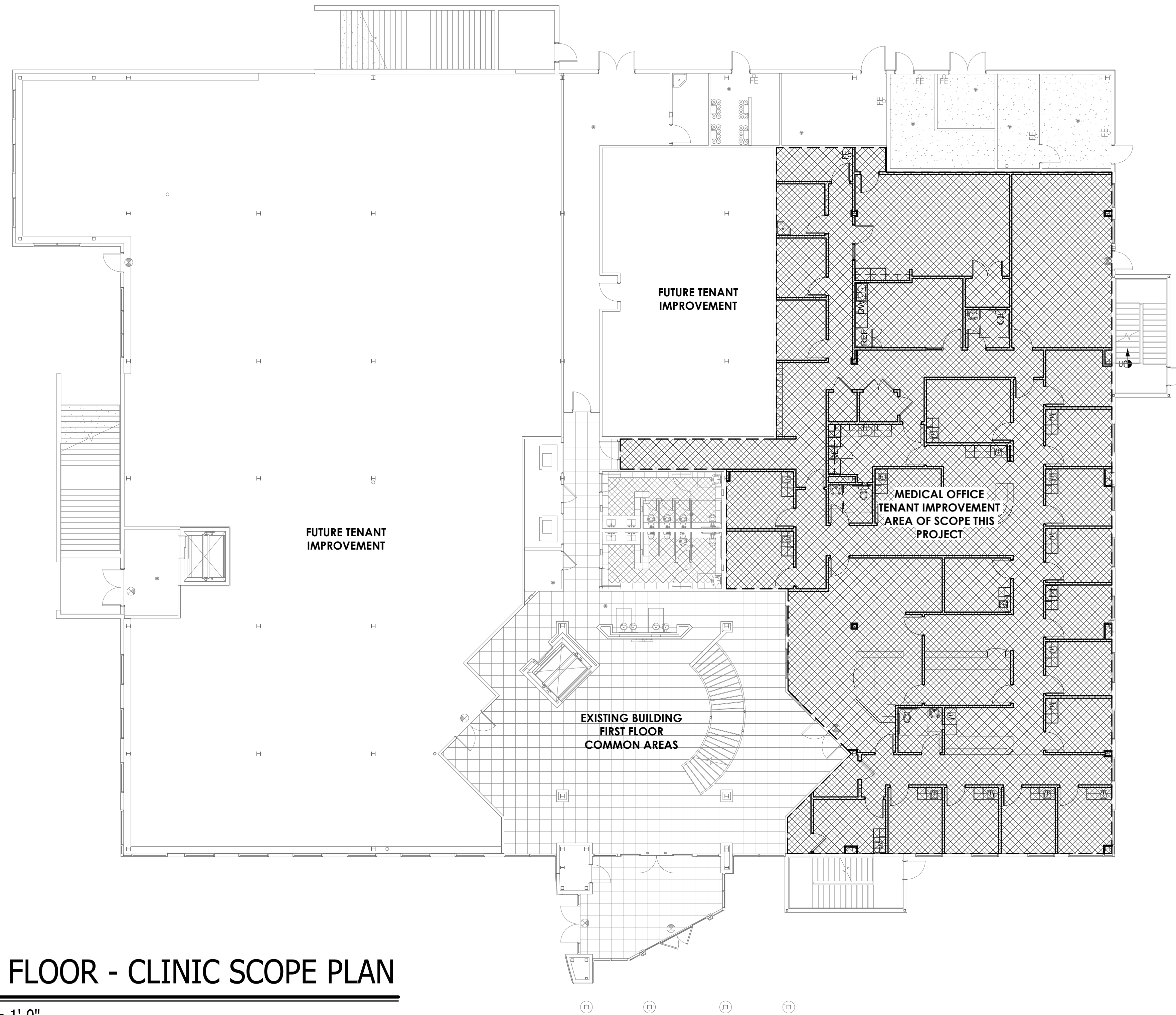
PHYSICIANS PARTNERS OF AMERICA
550 NORTH REO STREET, SUITE #100
TAMPA, FL 33609
PH: (813) 549-2131
FAX: (813) 549-2136

ARCHITECT

GORDON & ASSOCIATES ARCHITECT, LLC
18848 US Hwy 441, #405
MOUNT DORA, FL 32757
PH: (352) 383-6505
FAX: (352) 589-0685

M.E.P. ENGINEERS

I.C. THOMASSON ASSOC., INC.
3030 N. ROCKY POINT DRIVE W., SUITE #150
TAMPA, FL 33607
PH: (813) 365-3085
FAX: (813) 346-3550



1ST FLOOR - CLINIC SCOPE PLAN

3/32" = 1'-0"

PROJECT DATA

CATEGORY	CONSTRUCTION	FBC 2017 6TH EDIT. CODE REF.
CONSTRUCTION TYPE (FBC)	TYPE II-B	TABLE 601
SPRINKLERED	YES	
OCCUPANCY (FBC)	B-BUSINESS	SEC. 305.1.1
ALLOWABLE BUILDING AREA	99,382 SF	TABLE 506.2
EXIT ACCESS TRAVEL	300' MAXIMUM DISTANCE	TABLE 1017.2
COMMON PATH OF TRAVEL	100' MAXIMUM DISTANCE	TABLE 1006.2.1
SITE DATA		
ZONING JURISDICTION:	CLAY COUNTY, FLORIDA	
ZONING:	BB	
USE:	MEDICAL OFFICE	
AREA/OCCUPANT DATA		
MEDICAL OFFICE TENANT IMPROVEMENT	NUMBER OF OCCUPANTS (817/100 GSF) P-1004.1.2	6,637 SF
TOTAL BUILDING		6,637 SF
TOTAL # OF OCCUPANTS @ 1 PERSON / 100GSF =		67 PERSONS
UL DATA: SMOKE & SMOKE/FIRE SEPERATION		
PARTITION ASSEMBLY: EXISTING 1 HR FIRE OR FIRE/SMOKE PARTITIONS	UL #	UL-465

LIST OF CODES AND STANDARDS

NFPA-10-2013	STANDARD FOR PORTABLE FIRE EXTINGUISHERS
NFPA-13-2013	STANDARD FOR THE INSTALLATION OF SPRINKLER SYSTEMS
NFPA-25-2014	STANDARD FOR THE INSPECTION, TESTING AND MAINTENANCE OF WATER-BASED FIRE PROTECTION SYSTEMS
NFPA-37-2015	STANDARD FOR THE INSTALLATION AND USE OF STATIONARY COMBUSTION ENGINES AND TURBINES
NFPA-70-2014	NATIONAL ELECTRIC CODE
NFPA-72-2013	NATIONAL FIRE ALARM CODE
NFPA-80-2013	STANDARD FOR FIRE SCOUR AND FIRE WINDOWS
NFPA-95A-2015	STANDARD FOR THE INSTALLATION OF AIR CONDITIONING AND VENTILATION SYSTEMS
NFPA-99-2015	STANDARD FOR THE INSTALLATION OF WARM AIR HEATING AND AIR CONDITIONING SYSTEMS
NFPA-99-2015	STANDARD FOR HEALTH CARE FACILITIES
NFPA-101-2015	LIFE SAFETY CODE
NFPA-101-2013	STANDARD FOR EMERGENCY AND STANDBY POWER SYSTEMS
NFPA-101-2012	STANDARD FOR FIRE SAFETY AND EMERGENCY SYSTEMS
NFPA-201-2015	STANDARD ON FIRE WALLS AND FIRE BARRIER WALLS
NFPA-241-2013	STANDARD FOR SAFEGUARDING CONSTRUCTION, ALTERATION AND DEMOLITION OPERATIONS
NFPA-253-2012	STANDARD METHODS OF FIRE TESTS OF DOOR ASSEMBLIES
NFPA-253-2013	STANDARD METHODS OF TEST FOR CRITICAL FLUX OF FLOOR COVERING SYSTEMS USING A KNOXING BEAM BURNER SOURCE
FBC - 2017	FLORIDA BUILDING CODE, 6TH EDITION (2017)
FBC-MC - 2017	FLORIDA MECHANICAL CODE, 6TH EDITION (2017)
FBC-FC - 2017	FLORIDA FIRE CODE, 6TH EDITION (2017)
FBC-AC - 2017	FLORIDA ACCESSIBILITY CODE, 6TH EDITION (2017)
FGI - 2014	GUIDELINES FOR THE DESIGN AND CONSTRUCTION OF HOSPITALS AND HEALTH-CARE FACILITIES, 5TH EDITION

INDEX OF DRAWINGS

ARCHITECTURAL PHASE 3

- A1.1C COVER SHEET AND PROJECT DATA
- A3.1C MED OFFICE FLOOR PLAN
- A3.2C CLINIC CEILING AND LIFE SAFETY PLAN
- A6.1C PARTITION TYPES AND ADA DETAILS
- A8.1C DOOR INFORMATION & FINISH SCHEDULE
- A10.1C INTERIOR ELEVATIONS - CLINIC
- A10.2C CASEWORK DETAILS - CLINIC
- A10.3C CASEWORK DETAILS - CLINIC

MECHANICAL PHASE 3

- M000C MECHANICAL LEGEND - P3
- M110C MECH 1ST FLOOR - P3
- M210C HVAC PIPING & CONTROLS - P3
- M700C MECH SCHEDULES - P3
- M701C MECH SCHEDULES - P3
- M800C MECHANICAL DETAILS - P3
- M801C MECHANICAL DETAILS - P3

PLUMBING PHASE 3

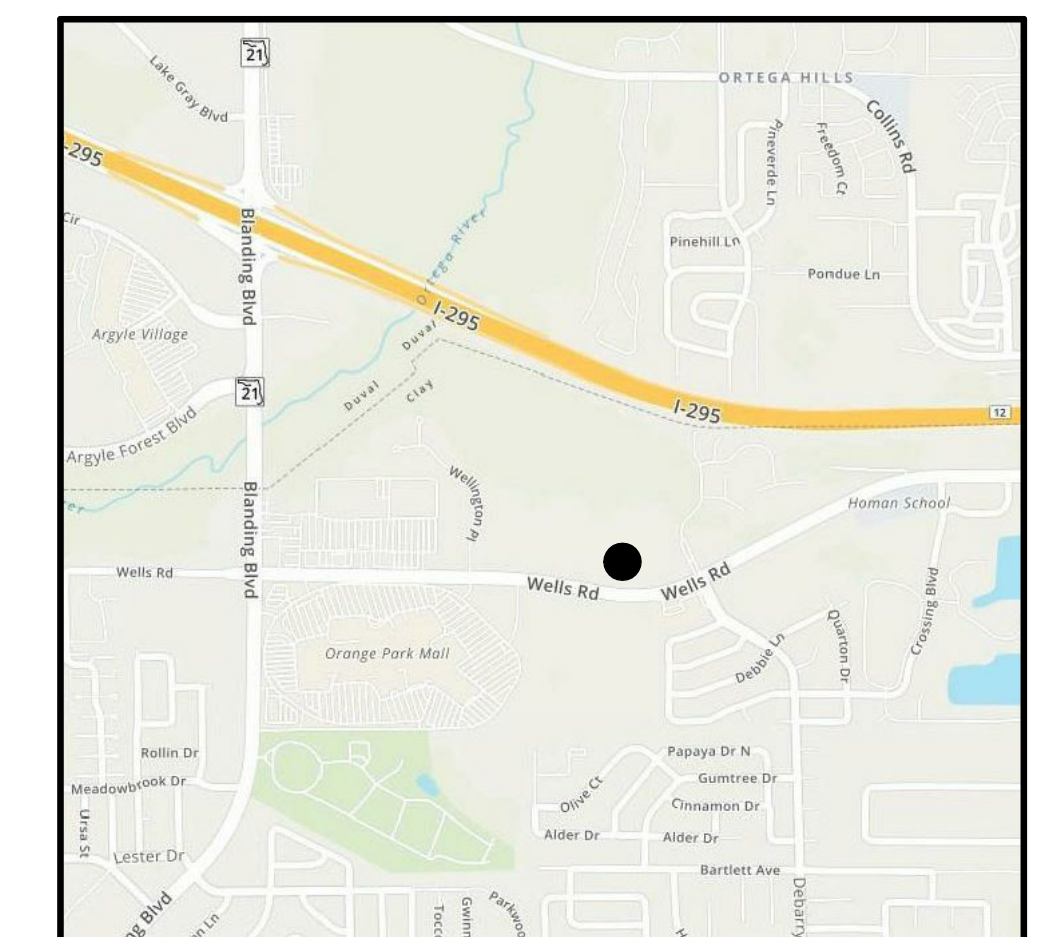
- P000C PLUMBING LEGEND - P3
- P100C PLUMBING UNDERGROUND - P3
- P110C PLUMBING 1ST FLOOR PLAN - P3
- P400C PLUMBING ISOMETRIC DIAGRAMS - P3
- P800C PLUMBING DETAILS - P3
- P801C PLUMBING DETAILS - P3

FIRE PROTECTION PHASE 3

- FP000C FIRE PROT. LEGEND - P3
- FP110C FIRE PROT. 1ST FLOOR - P3

ELECTRICAL PHASE 3

- E000C ELECTRICAL LEGEND - P3
- E110C LIGHTING 1ST FLOOR - P3
- E210C POWER 1ST FLOOR - P3
- E310C SYSTEMS 1ST FLOOR - P3
- E410C ELEC/HVAC 1ST FLOOR - P3
- E600C ELECTRICAL RISER - P3
- E700C ELECTRICAL SCHEDULES - P3
- E800C ELECTRICAL DETAILS - P3
- E801C ELECTRICAL DETAILS - P3



SITE LOCATION MAP

SEAL

THIS DRAWING AND THE DESIGN THEREON IS THE PROPERTY OF GORDON & ASSOCIATES ARCHITECT, LLC. THEIR USE WITHOUT WRITTEN LICENSE IS PROHIBITED. NOT VALID FOR USE UNLESS SEAL IS AFFIXED.

© 2019

730 East Elm Avenue
Mount Dora, Florida 32757
Telephone 352-383-6505
Facsimile 352-589-0685
AA-26200236

Gordon & Associates
ARCHITECT, LLC

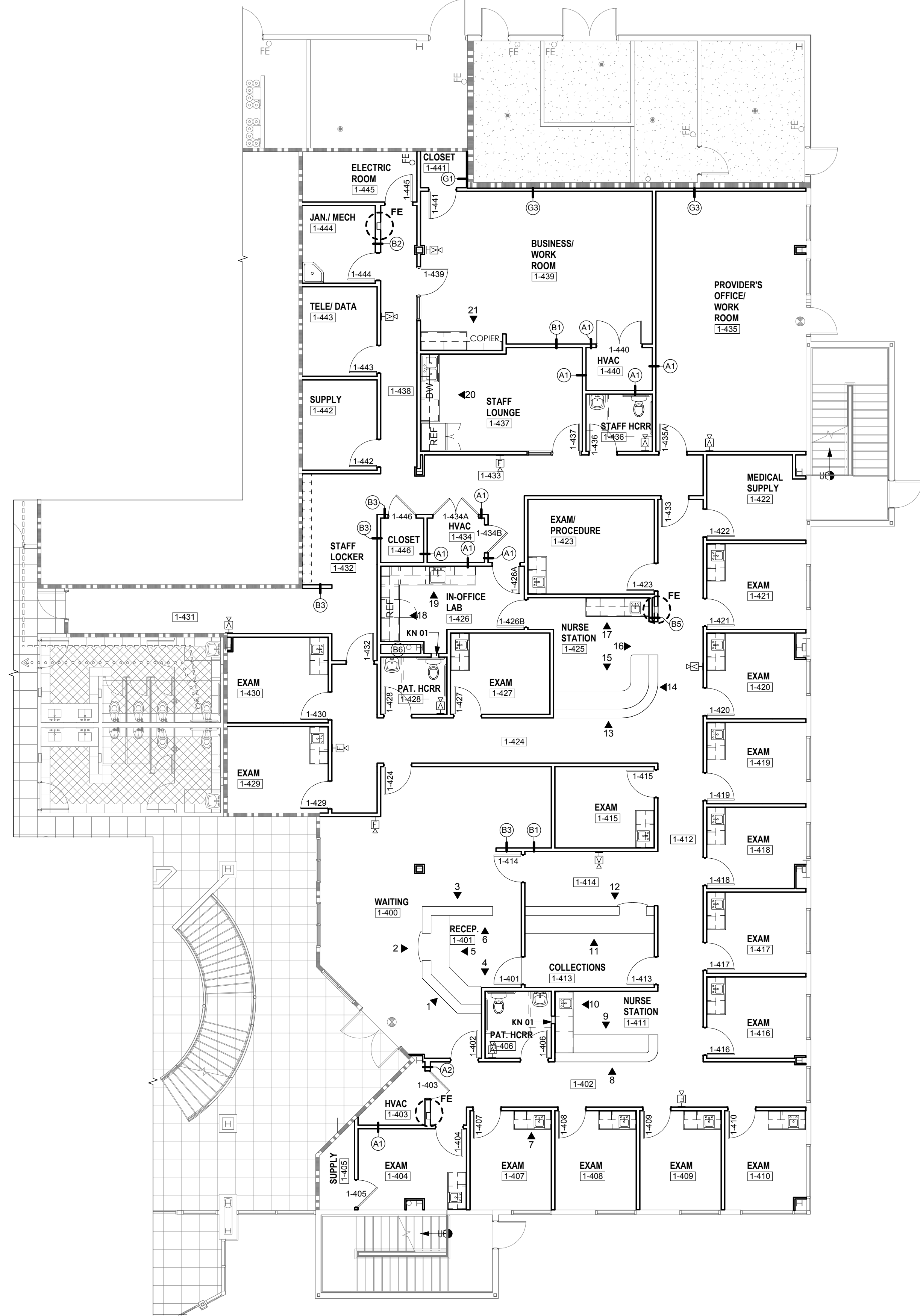
PROJECT NO. 1903C COVER SHEET AND PROJECT DATA

JACKSONVILLE MEDICAL MALL
PHASE 3 - MEDICAL OFFICE

ORANGE PARK, FLORIDA
INTERIOR IMPROVEMENTS

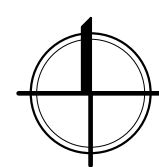
11/20/2019
A REVISION

A1.1C



MED OFFICE FLOOR PLAN

1/8" = 1'-0"

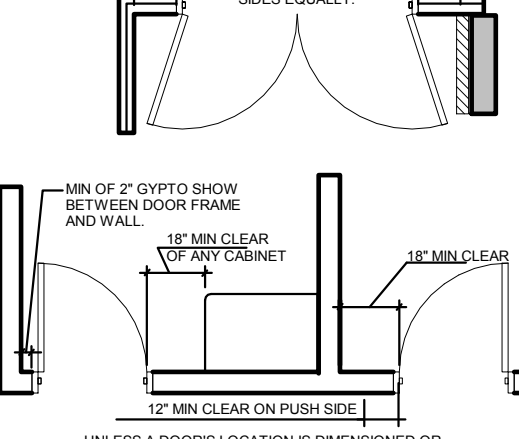
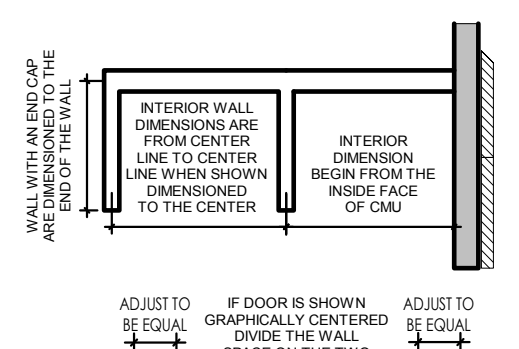


SHEET KEYNOTES - PHASE 3

KN 01 SPECIMEN PASS THROUGH CABINET. REFER TO TOILET ACCESSORIES SPECIFICATION FOR MODEL# AND MANUFACTURER.

GENERAL "PLAN" DIMENSIONAL CONVENTIONS

ALL PLAN DIMENSIONS SHOWN ARE BASED ON NOMINAL STUD AND DIM WALL DIMENSIONS AND ARE SUBJECT TO FIELD ADJUSTMENT FOR ACTUAL MATERIALS. PLAN DIMENSIONS HAVE A GRAPHIC TOLERANCE OF +/- 1/2" MINIMUM CLEAR AND ALL WALL DIMENSIONS ARE NOT TO BE REDUCED COORDINATE ALL EQUIPMENT DIMENSIONS WITH THE MANUFACTURER, OWNER AND OWNERS REP.



UNLESS A DOOR'S LOCATION IS DIMENSIONED OR LAD OUT SPECIFICALLY, SUCH AS SHOWN CENTERED, TYPICAL DOOR LOCATION IN A WALL SHALL BE PLACED TO MEET THE FLORIDA ACCESSIBILITY CODE FIRST AND THE ABOVE REQUIREMENTS SECOND.

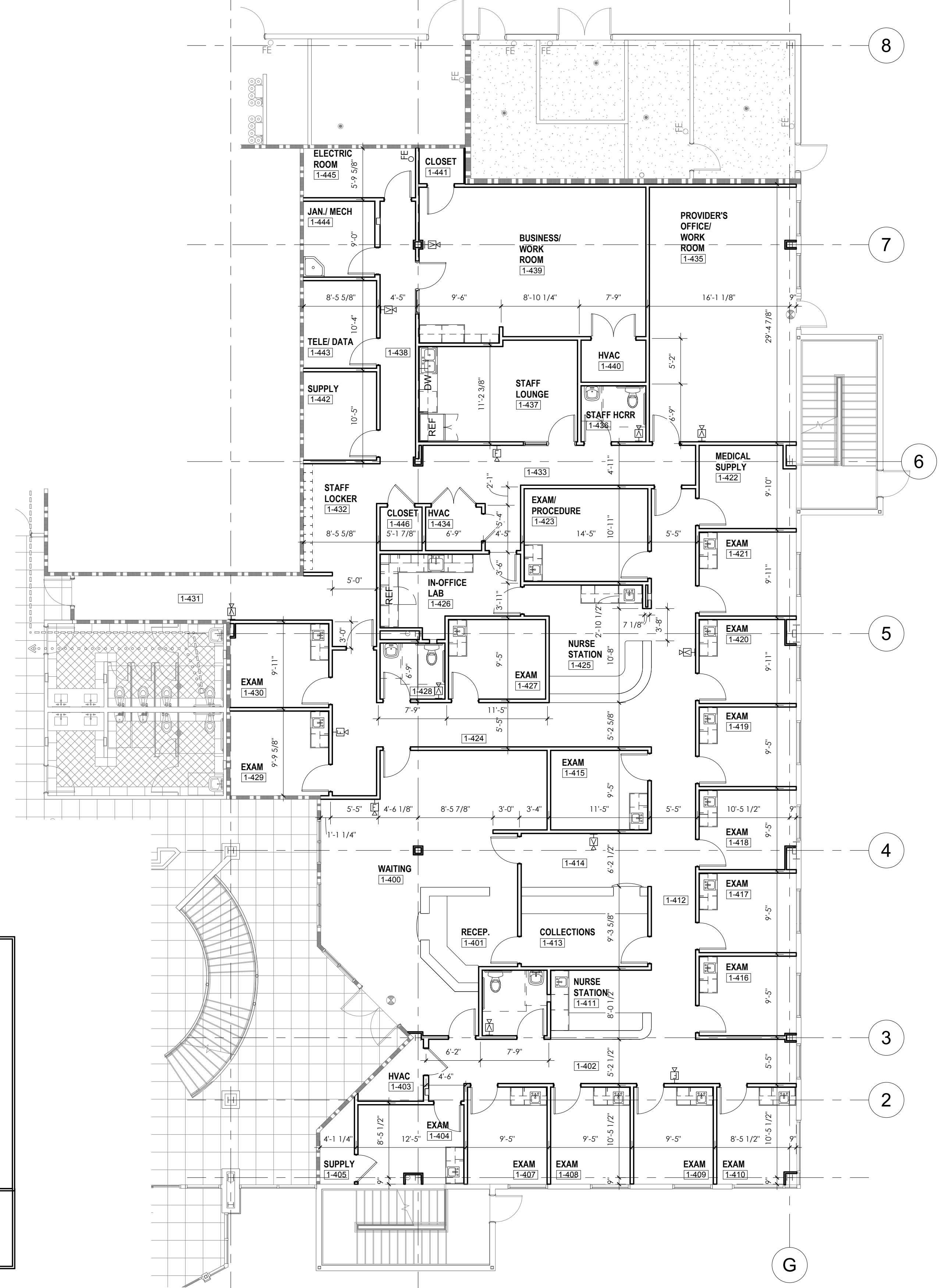
SYMBOL LEGEND:

- BUILDING GRID/COLUMN TARGET
- WALL CABINET FIRE EXTINGUISHER
- WALL MOUNTED FIRE EXTINGUISHER
- SECTION / DETAIL MARK
- SPECIAL WALL TYPE (SEE SHEET A-6.1)
- WALL MOUNTED ELECTRICAL PANEL (SEE ELECTRICAL DRAWINGS)
- NEW INTERIOR WALLS
- INTERIOR ELEVATION TARGET (SEE A10 SERIES DRAWINGS)
- ITEM TO BE FURNISHED BY OWNER AND INSTALLED BY CONTRACTOR

KEY

EXISTING 1 HOUR FIRE WALL or FIRE/SMOKE WALL (U-465)

GENERAL NOTE: ALL PARTITIONS ARE TYPE B1 UNLESS INDICATED OTHERWISE. SEE A6.1 FOR PARTITION TYPES. G.C. SHALL PROVIDE INTERIOR GYPSUM BOARD FINISHES AT ALL EXTERIOR WALLS IN SPACES WITHIN SCOPE.



MED. OFFICE DIMENSION PLAN

1/8" = 1'-0"

SEAL

THIS DRAWING AND THE DESIGN THEREON IS THE PROPERTY OF GORDON & ASSOCIATES ARCHITECT, LLC. THEIR USE WITHOUT WRITTEN LICENSE IS PROHIBITED. NOT VALID FOR USE UNLESS SEAL IS AFFIXED.
© 2019

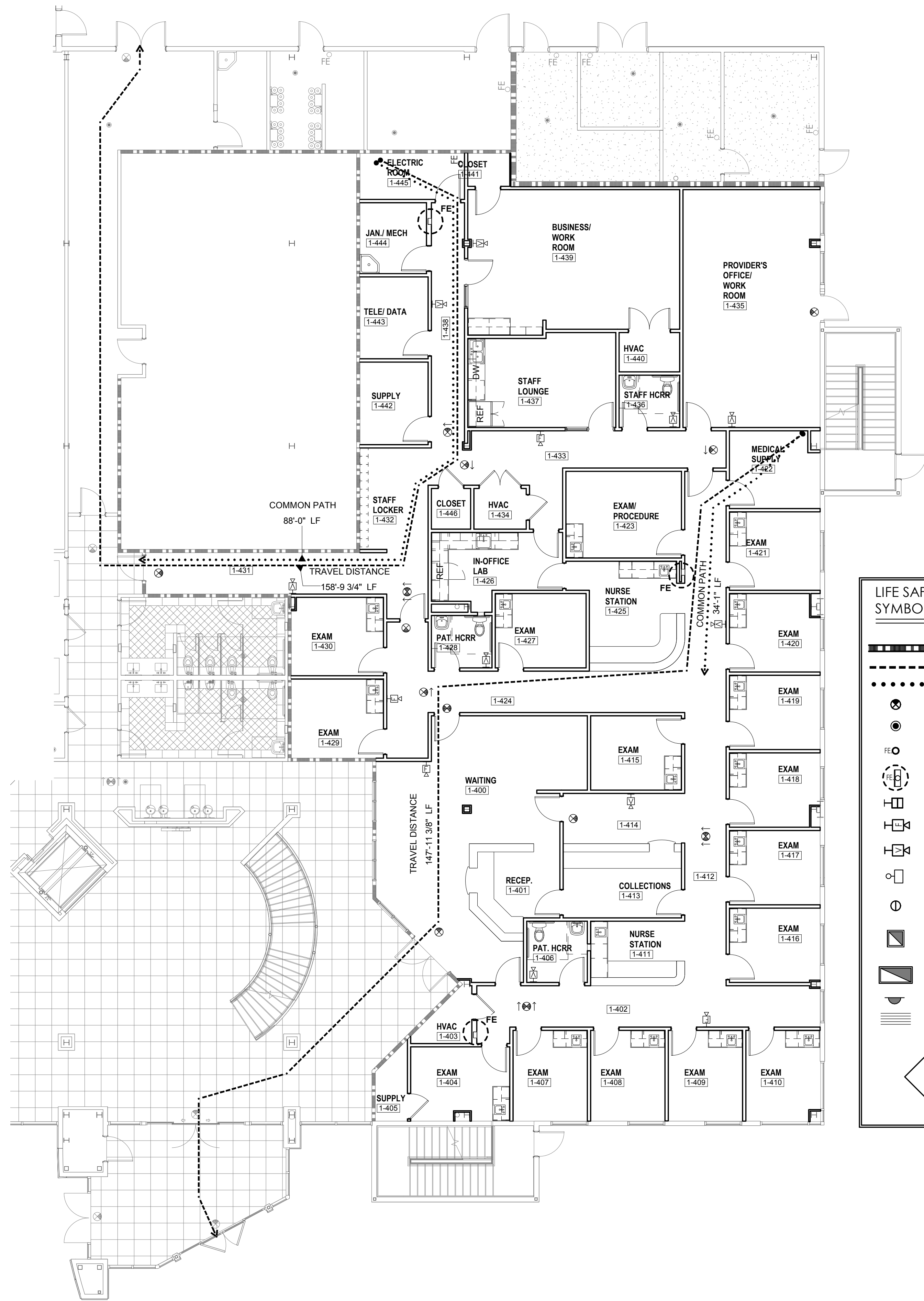
730 East Fifth Avenue
Mount Dora, Florida 32757
Telephone 352-383-4505
Facsimile 352-589-4685
AA-26200236

Gordon & Associates
ARCHITECT, LLC

PROJECT NO. 1903C CONTENTS
1903C MED OFFICE FLOOR PLAN
JACKSONVILLE MEDICAL MALL
PHASE 3 - MEDICAL OFFICE
ORANGE PARK, FLORIDA
INTERIOR IMPROVEMENTS

11/20/2019	REVISION

A3.1C



MEDICAL OFFICE LIFE SAFETY

1/8" = 1'-0"

REFLECTED CEILING PLAN SYMBOL LEGEND

- ⊗ EXIT LIGHT
- RECESSED CAN LIGHTING
- ⊕ SURFACE MOUNT LIGHT FIXTURE
- ⊞ 2 X 2 LIGHT FIXTURE
- ⊞ 2 X 4 LIGHT FIXTURE
- FLOUR. STRIP FIXTURE
- UNDER CABINET FIXTURE
- OWNER FURNISHED FIXTURE
- WALL SCONCE
- ⊞ 4" WALL WASH
- ⊞ 4" DOWN LIGHT
- SMOKE DETECTOR

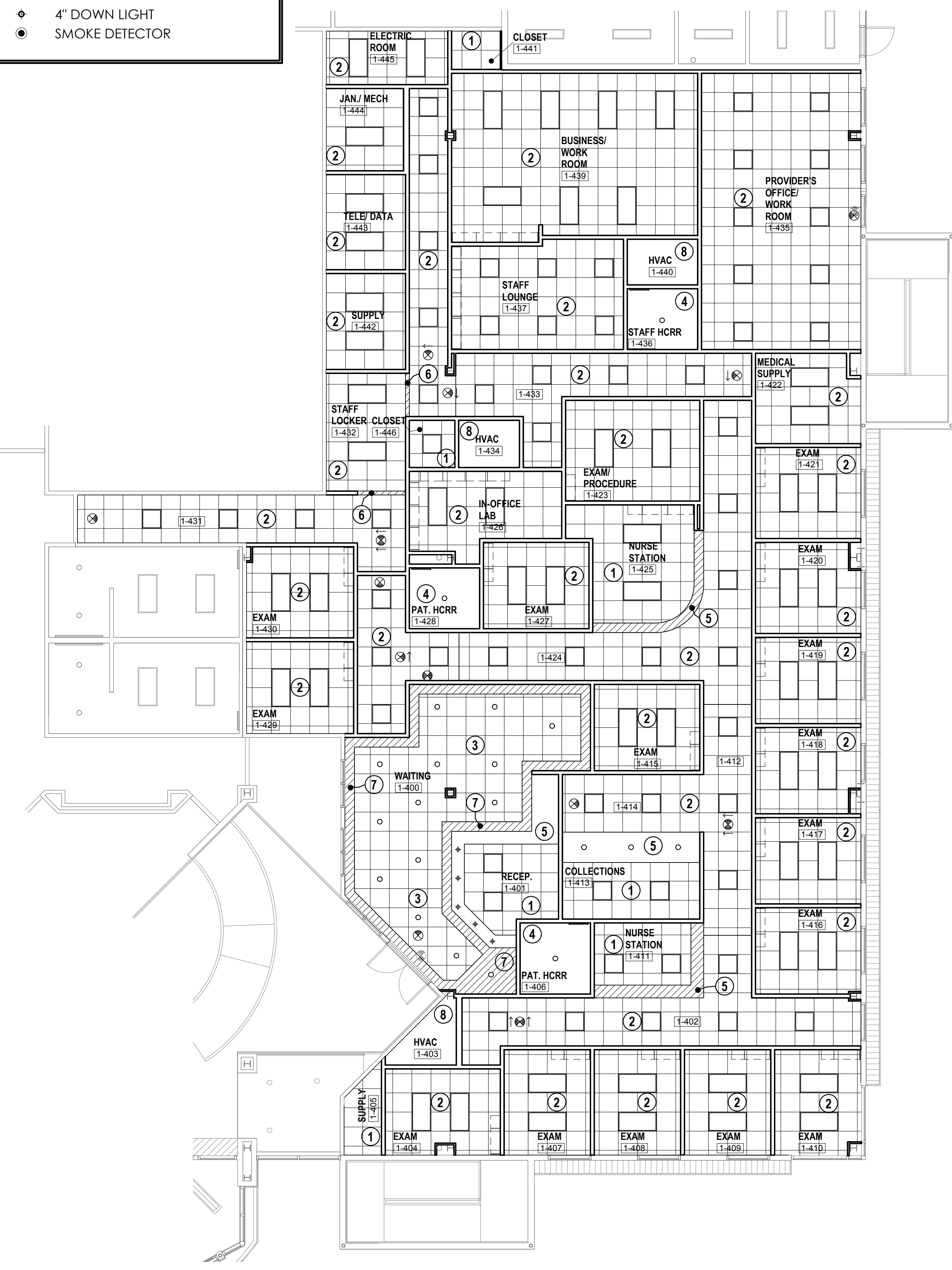
CEILING TYPE LEGEND

- ① 24" X 24" ACOUSTICAL TILE CEILING AT 8'-0" AFF.
- ② 24" X 24" ACOUSTICAL TILE CEILING AT 9'-0" AFF.
- ③ 24" X 24" ACOUSTICAL TILE CEILING AT 10'-0" AFF.
- ④ DRYWALL CEILING AT 8'-0" AFF.
- ⑤ DRYWALL SOFFIT/BULKHEAD AT 7'-11 3/4" AFF.
- ⑥ DRYWALL SOFFIT/BULKHEAD AT 8'-0" AFF.
- ⑦ DRYWALL SOFFIT/BULKHEAD AT 9'-0" AFF.
- ⑧ OPEN TO STRUCTURE ABOVE.

LIFE SAFETY SYMBOL LEGEND

- 1-HOUR FIRE RATED PARTITION
- - - TRAVEL DISTANCE (200' MAX.)
- · · · · COMMON PATH (100' MAX.)
- ⊗ EXIT SIGN
- SMOKE DETECTOR
- FE FIRE EXTINGUISHER, WALL MOUNTED
- FE FIRE EXTINGUISHER IN CABINET
- FE FIRE ALARM PULL STATION
- FE FIRE ALARM VISUAL/AUDIBLE
- FE FIRE ALARM, VISUAL DEVICE
- FE ELECTROMAGNETIC DOOR HOLD-OPEN DEVICE
- CAN LIGHTING ON EMERGENCY POWER
- ▣ FLUORESCENT LIGHT FIXTURE-EMERGENCY POWER
- ▣ FLUORESCENT LIGHT FIXTURE-EMERGENCY POWER
- ▣ LEVEL THRESHOLD TRANSITION
- ▣ TACTILE WARNING

← EGRESS FROM BUILDING



MEDICAL OFFICE CEILING PLAN

1/8" = 1'-0"

THIS DRAWING AND THE DESIGN THEREON IS THE PROPERTY OF GORDON & ASSOCIATES ARCHITECT, LLC. THEIR USE WITHOUT WRITTEN LICENSE IS PROHIBITED. NOT VALID FOR USE UNLESS SEAL IS AFFIXED.
© 2019

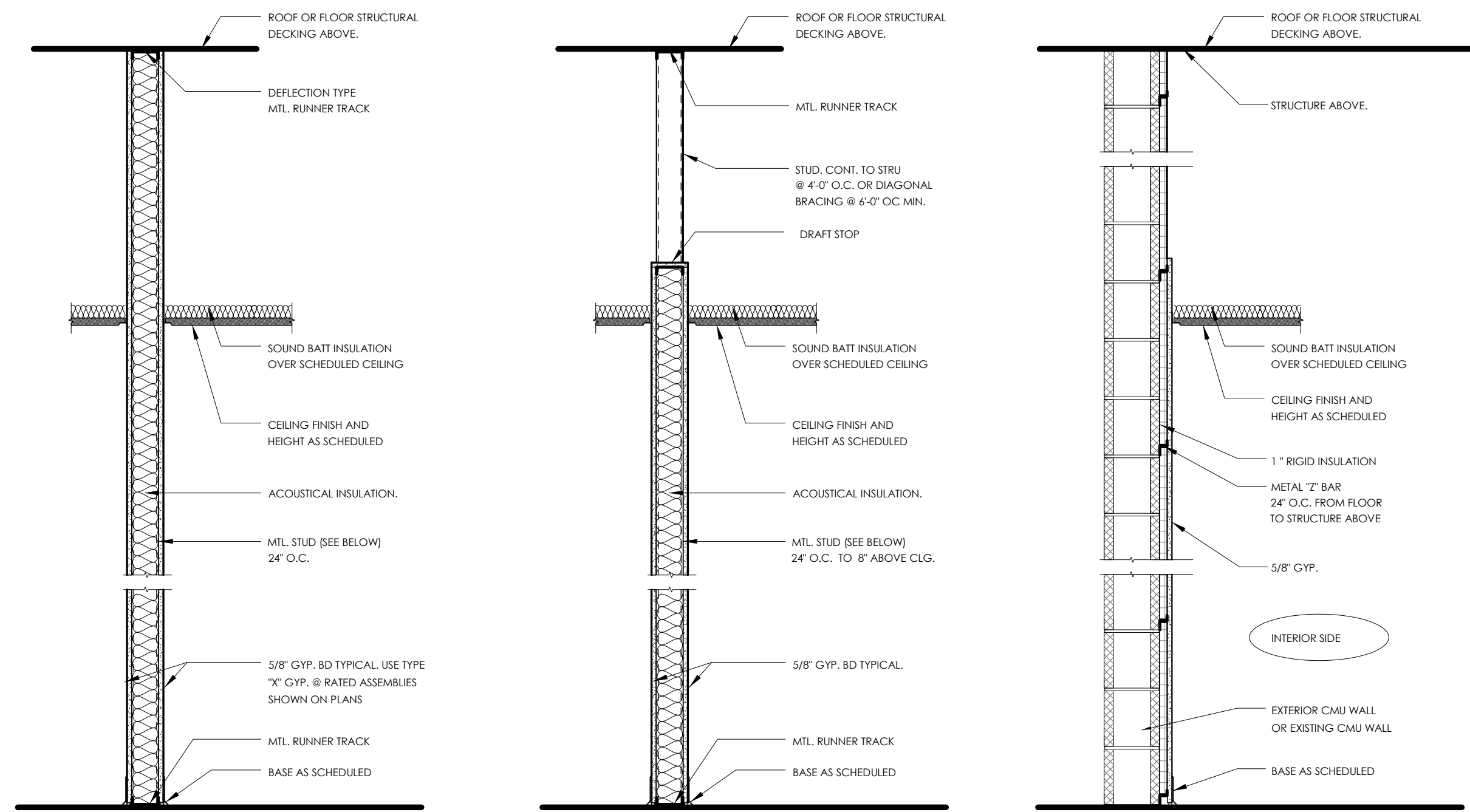
730 East Ellis Avenue
Mount Dora, Florida 32757
Telephone 352-383-4505
Facsimile 352-589-4685
AA-26200236

Gordon & Associates
ARCHITECT, LLC

PROJECT NO. 1903C
CONTENTS
CLINIC CEILING AND LIFE SAFETY PLAN
JACKSONVILLE MEDICAL MALL
PHASE 3 - MEDICAL OFFICE
ORANGE PARK, FLORIDA
INTERIOR IMPROVEMENTS

11/20/2019	REVISION
------------	----------

A3.2C



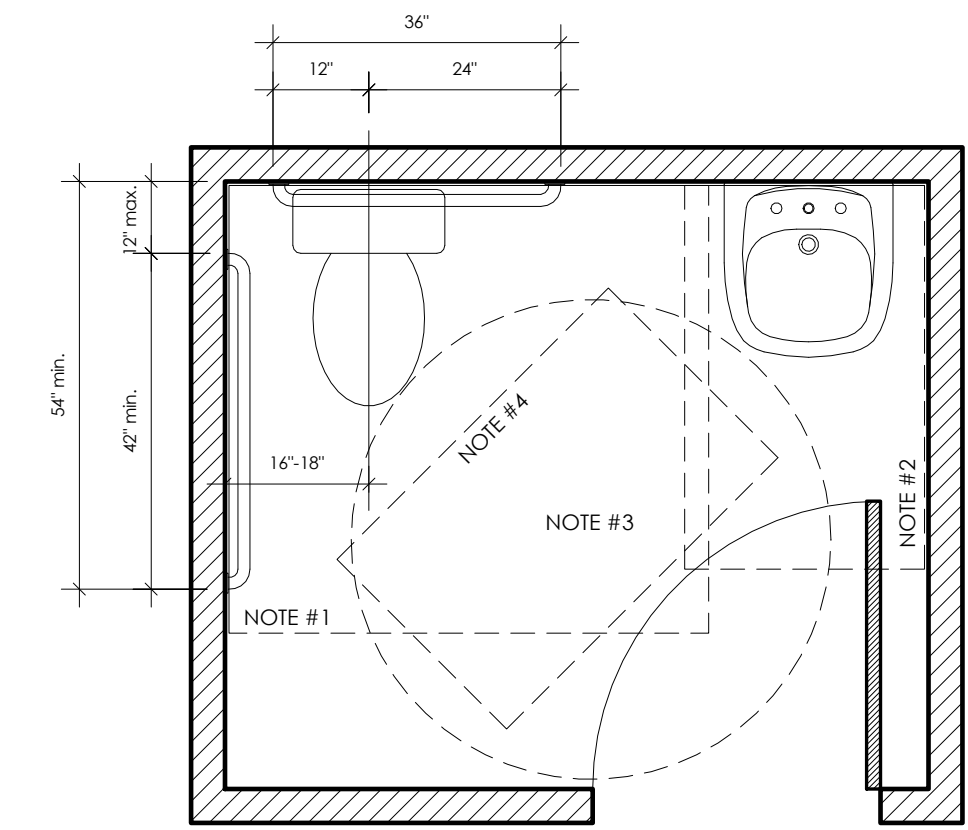
- USE ULL DESIGN U-445 FOR 1 HR FIRE RATING WHERE SHOWN ON PLANS.
- (A1) — USING 3-5/8\" STD.
 - (A2) — USING 6\" STD.
 - (A3) — DELETE ACOUSTICAL INSULATION
 - (A4) — DELETE ACOUSTICAL INSULATION
 - (A5) — USING 3-5/8\" STD. (DELETE ACOUSTICAL INSULATION AND GYP. BD. ONE SIDE)
- (B1) — USING 3-5/8\" STD.
 - (B2) — USING 6\" STD.
 - (B3) — USING 3-5/8\" STD. (DELETE ACOUSTICAL INSULATION)
 - (B4) — USING 6\" STD. (DELETE ACOUSTICAL INSULATION)
 - (B5) — USING 3-5/8\" STD. (DELETE ACOUSTICAL INSULATION AND GYP. BD. ONE SIDE)
 - (B6) — USING 3-5/8\" STD. (GYP. BD. ONE SIDE)
- (G1) — USING 1\" 7\" FURRING
 - (G2) — USING 6\" STUD IN LIEU OF 7\" FURRING
 - (G3) — USING 3-5/8\" STUD IN LIEU OF 7\" FURRING
- IN TYPES 'G2' AND 'G3', METAL STUDS SHALL BE VERTICAL AND SPACED 24\" O.C. MAX WITH RIGID INSULATION FIT BETWEEN. STOP STUDS 8\" ABOVE CEILING. USE 'G1' FROM TOP OF STUDS TO UNDER SIDE OF ROOF DECK. IN OPERATING ROOM PROVIDE 2 LAYERS. 1/2\" GYP. BD. IN LIEU OF 5/8\"

GENERAL NOTE: SEE HATCHING ON FLOOR PLAN TO DETERMINE WALL RATING / PRIORITY

WALLS DESIGNATED ON PLANS TO BE SMOKE TIGHT PARTITIONS, SHALL HAVE ACOUSTICAL TILE CEILING GASKETED AND CLIPPED TO PREVENT THE PASSAGE OF SMOKE (SEE SPECIFICATIONS)

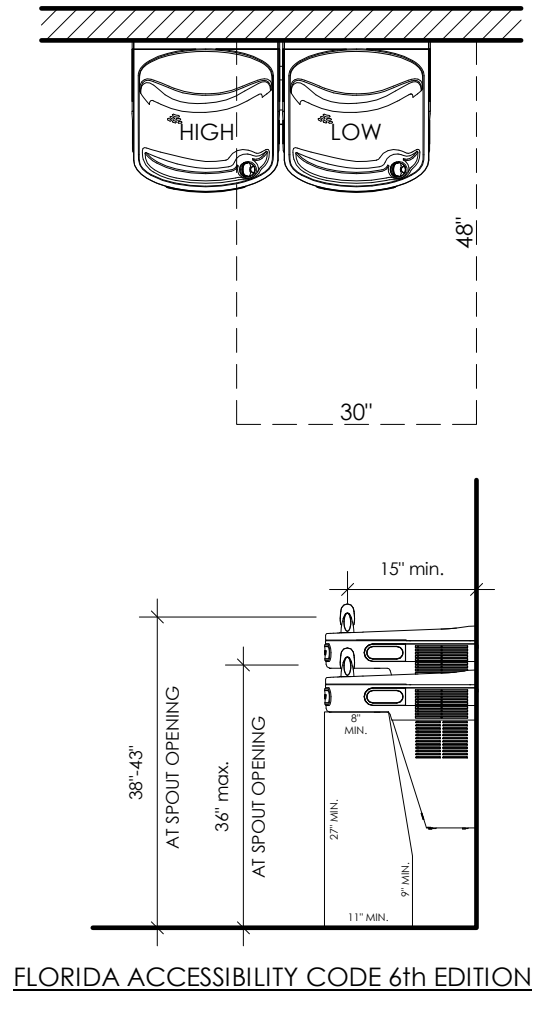
PARTITION TYPES CLINIC

NOT TO SCALE

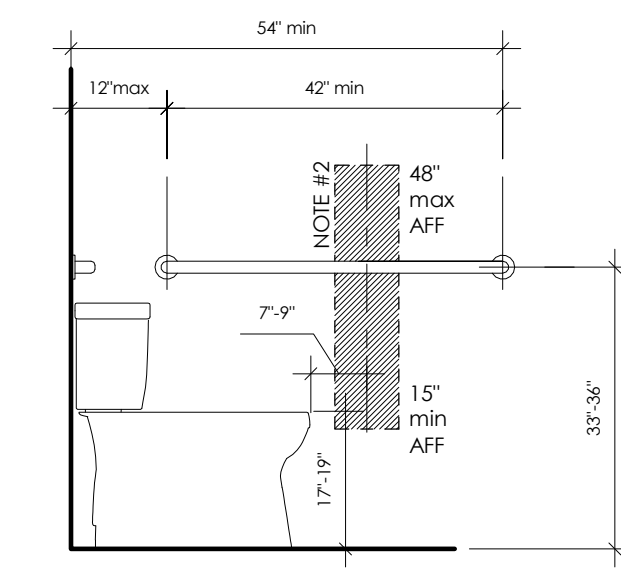


ALL REFERENCED SECTIONS ARE FOR THE FLORIDA ACCESSIBILITY CODE 6th EDITION

NOTE #1 : 60\"/>



FLORIDA ACCESSIBILITY CODE 6th EDITION

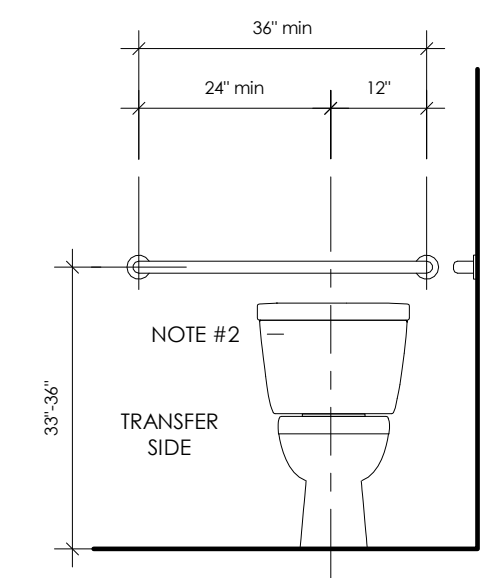


ALL REFERENCED SECTIONS ARE FOR THE FLORIDA ACCESSIBILITY CODE 6th EDITION

NOTE #1 : GRAB BARS, SECTION 604.5 AND 609.

NOTE #2 : DISPENSERS LOCATION, SECTION 604.7.

NOTE #3 : TOILET HEIGHT, SECTION 604.4.



ALL REFERENCED SECTIONS ARE FOR THE FLORIDA ACCESSIBILITY CODE 6th EDITION

NOTE #1 : GRAB BARS, SECTION 604.5 AND 609.

NOTE #2 : FLUSH CONTROL AT OPEN SIDE, SECTION 604.6.

NOTE #3 : TOILET HEIGHT, SECTION 604.4.

ADA DETAILS CLINIC

NOT TO SCALE

SEAL

THIS DRAWING AND THE DESIGN THEREIN IS THE PROPERTY OF GORDON & ASSOCIATES ARCHITECT, LLC. THEIR USE WITHOUT WRITTEN LICENSE IS PROHIBITED. NOT VALID FOR USE UNLESS SEAL IS AFFIXED.

© 2019

INTERIOR SIDE

730 East Fifth Avenue
Mount Dora, Florida 32757
Telephone 352-383-4505
Facsimile 352-589-4685
AA-26200236

Gordon & Associates
ARCHITECT, LLC

PROJECT NO. 1903C PARTITION TYPES AND ADA DETAILS
JACKSONVILLE MEDICAL MALL
PHASE 3 - MEDICAL OFFICE
ORANGE PARK, FLORIDA
INTERIOR IMPROVEMENTS

11/20/2019	REVISION

A6.1C

THIS DRAWING AND THE DESIGN THEREON IS THE PROPERTY OF GORDON & ASSOCIATES ARCHITECT, LLC. THEIR USE WITHOUT WRITTEN LICENSE IS PROHIBITED. NOT VALID FOR USE UNLESS SEAL IS AFFIXED.

© 2019

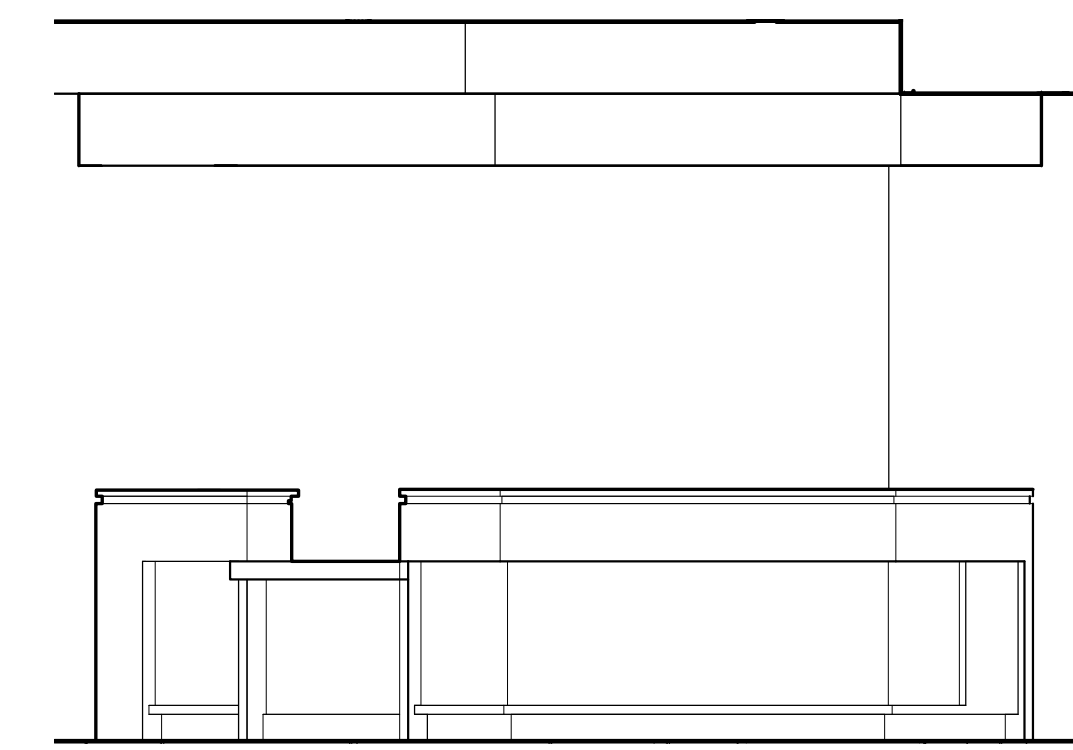
730 East Fifth Avenue
 Mount Dora, Florida 32757
 Telephone 352-383-4505
 Facsimile 352-589-0485
 AA262002361

Gordon & Associates
 ARCHITECT, LLC

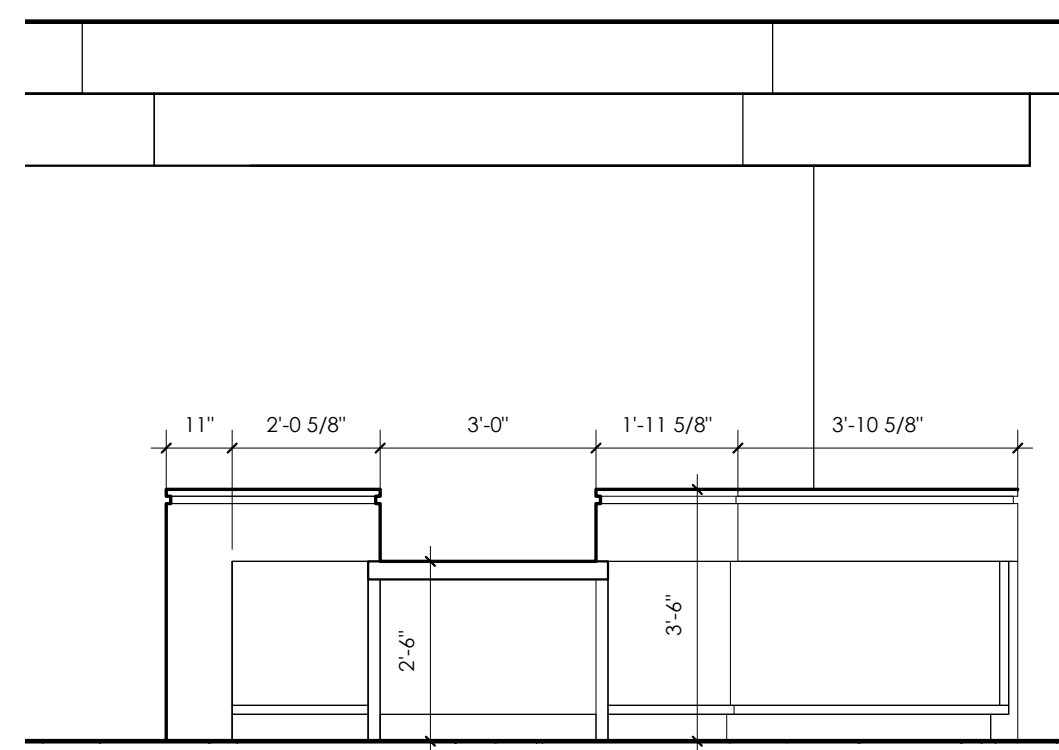
PROJECT NO. 1903C
 INTERIOR ELEVATIONS - CLINIC
JACKSONVILLE MEDICAL MALL
PHASE 3 - MEDICAL OFFICE
 ORANGE PARK, FLORIDA
 INTERIOR IMPROVEMENTS

11/20/2019	CONTENTS
REVISION	

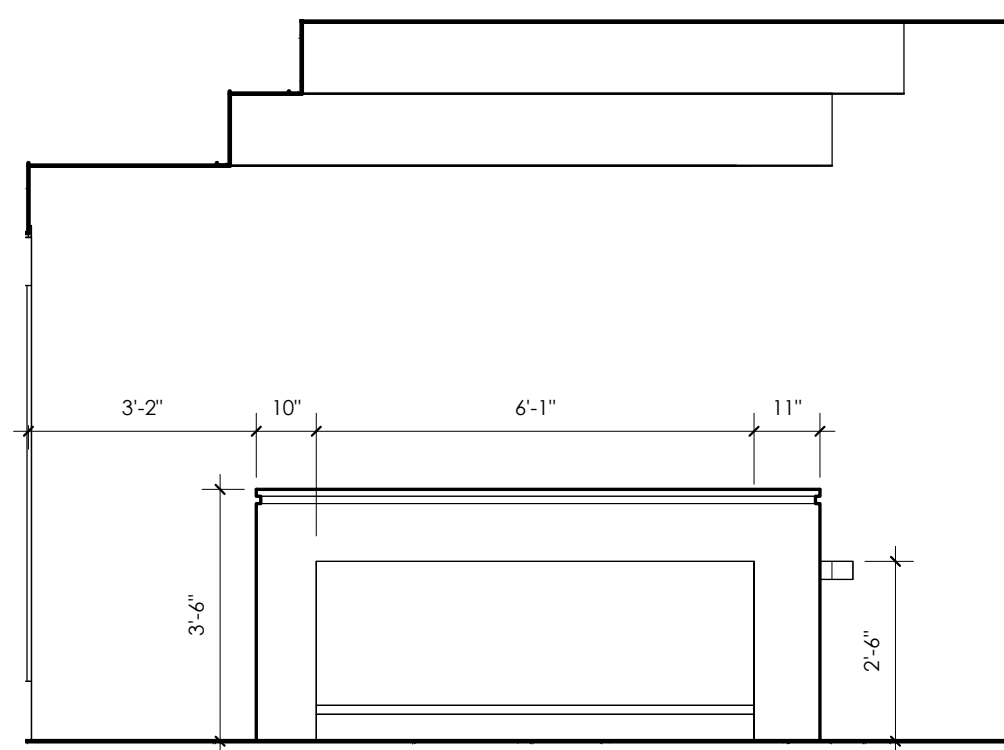
A10.1C



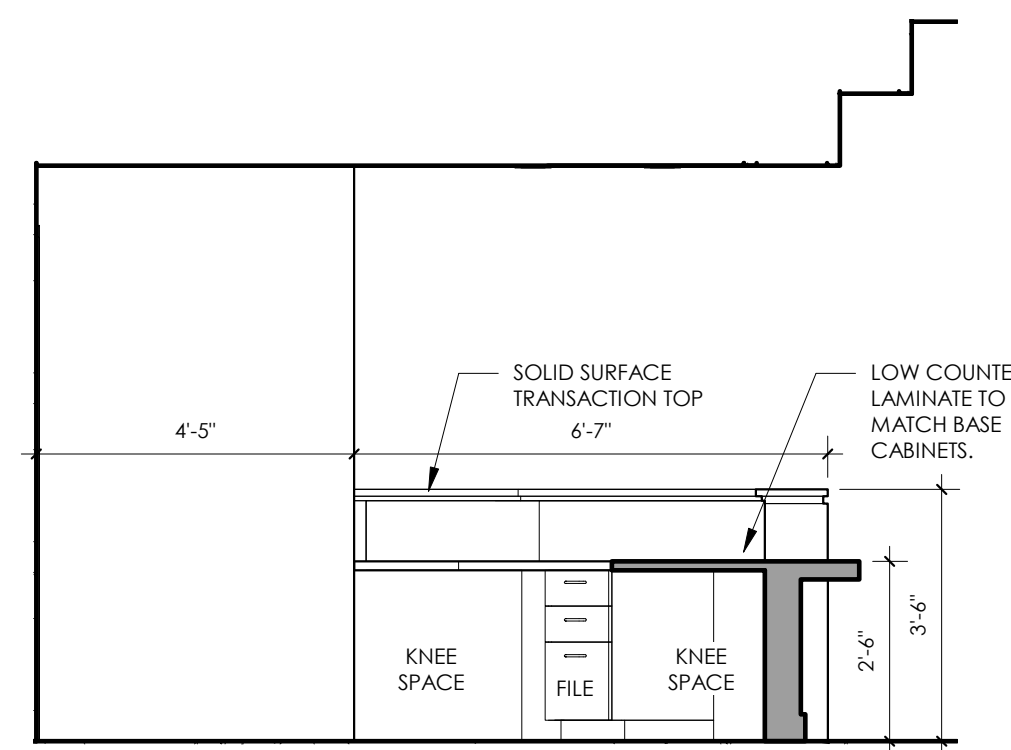
1 CLINIC RECEPTION 1-401 A
 A10.1C 3/8" = 1'-0"



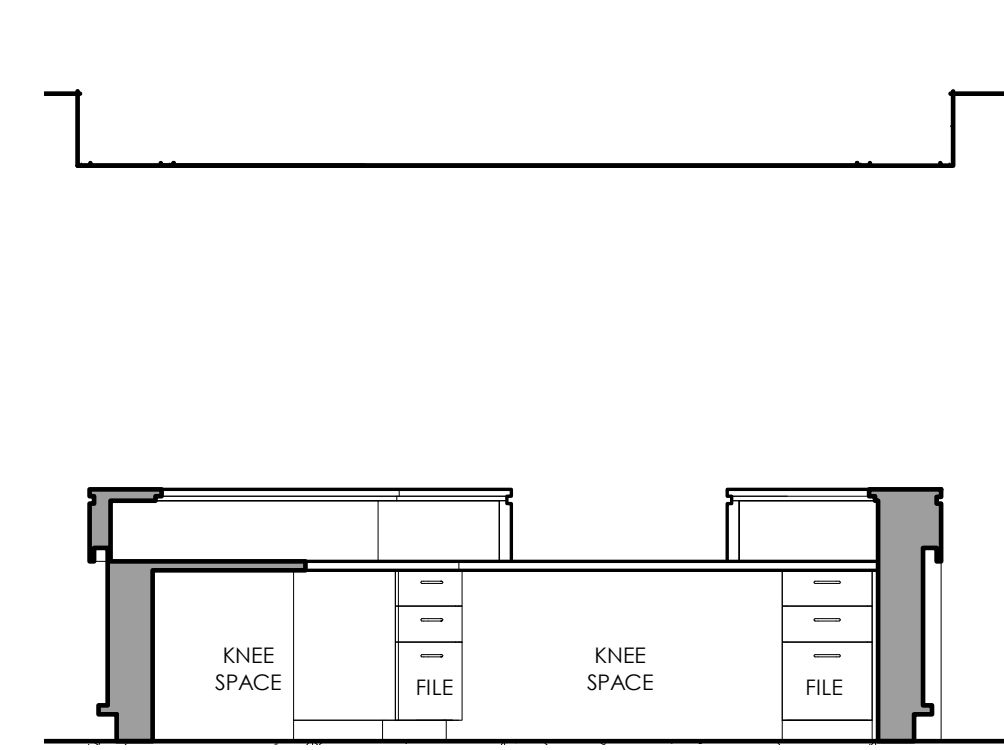
2 CLINIC RECEPTION 1-401 B
 A10.1C 3/8" = 1'-0"



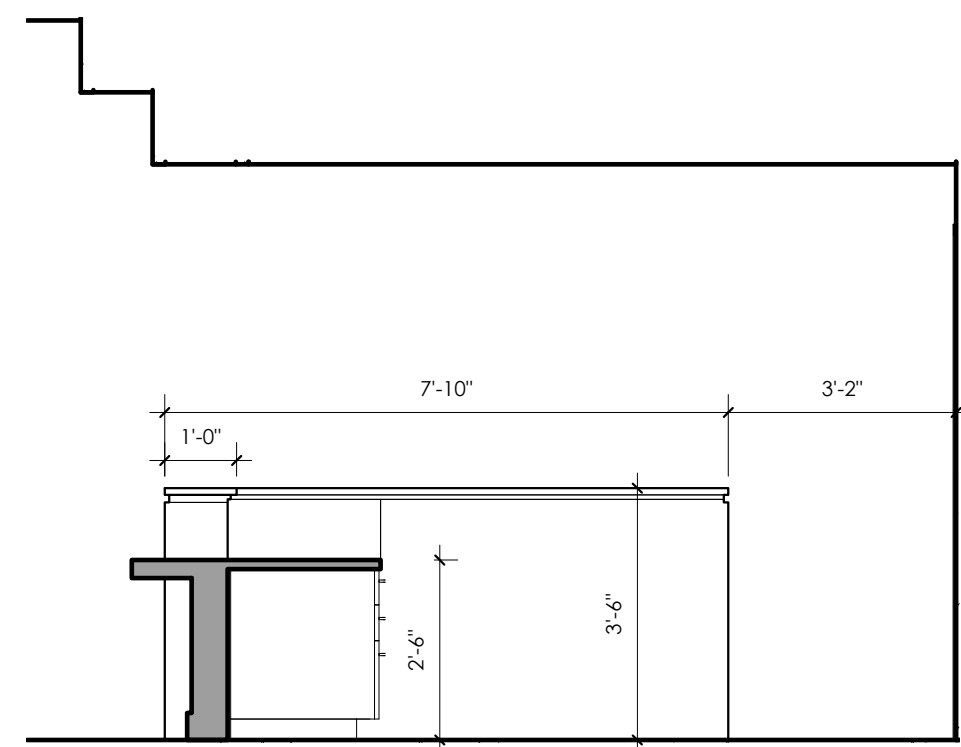
3 CLINIC RECEPTION 1-401 C
 A10.1C 3/8" = 1'-0"



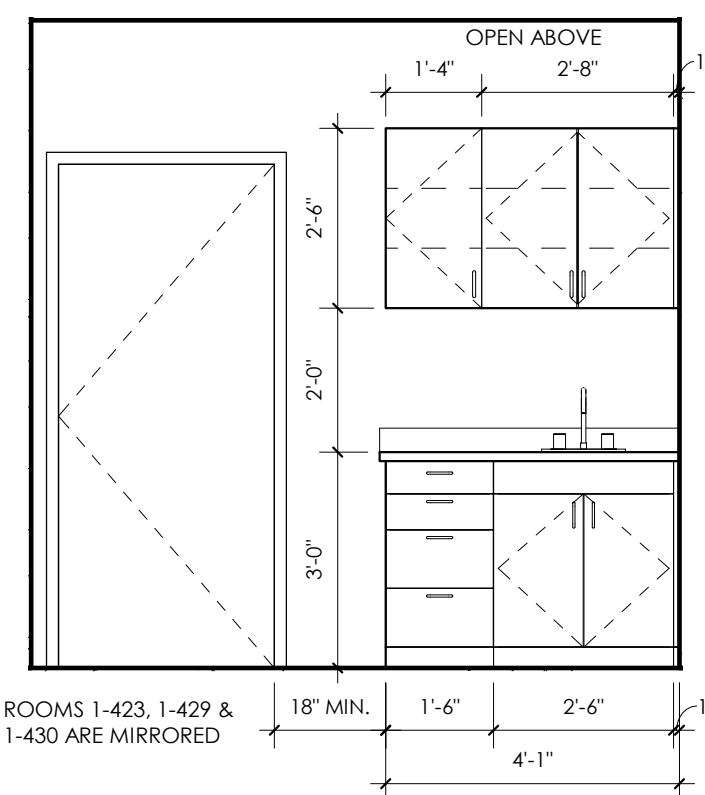
4 CLINIC RECEPTION 1-401 D
 A10.1C 3/8" = 1'-0"



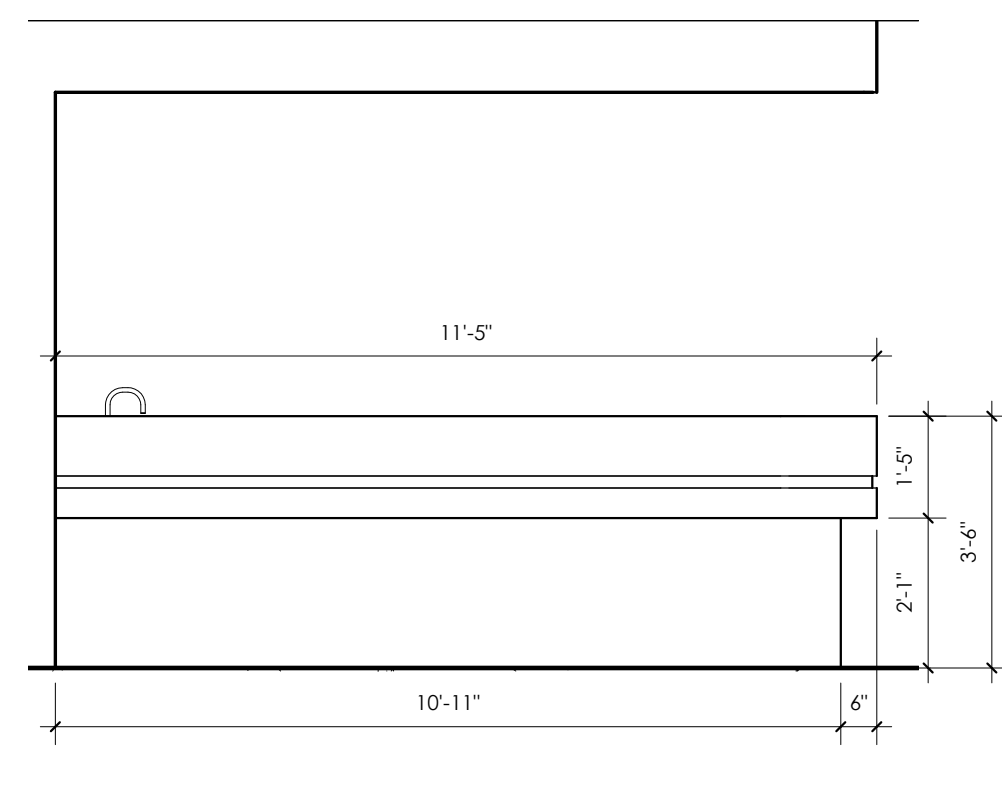
5 CLINIC RECEPTION 1-401 E
 A10.1C 3/8" = 1'-0"



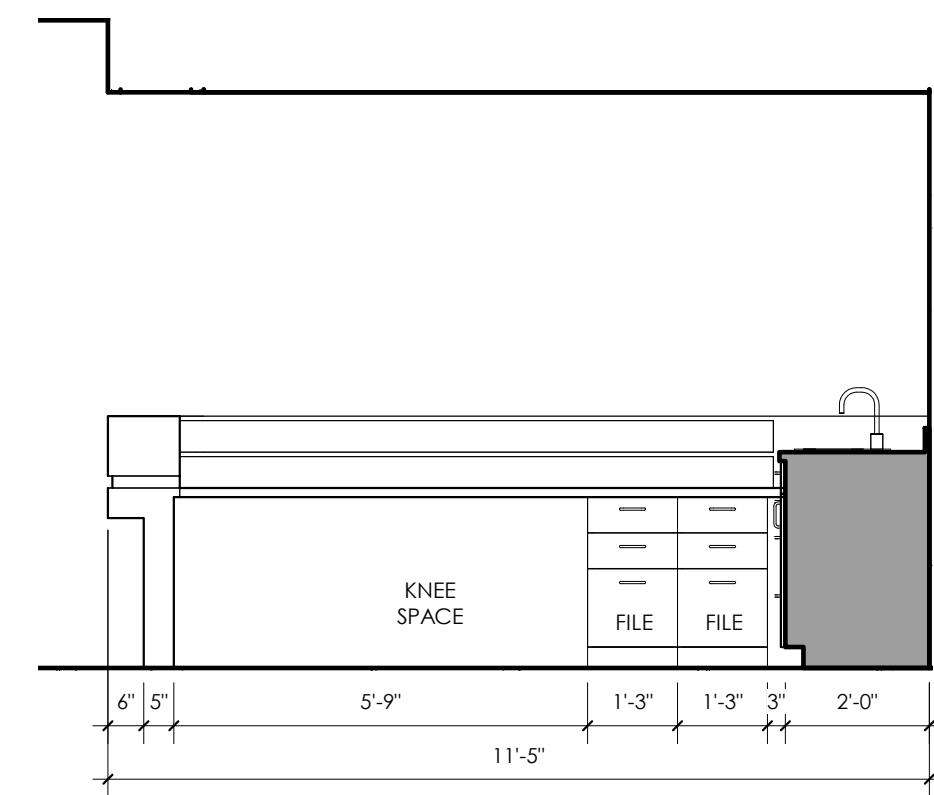
6 CLINIC RECEPTION 1-401 F
 A10.1C 3/8" = 1'-0"



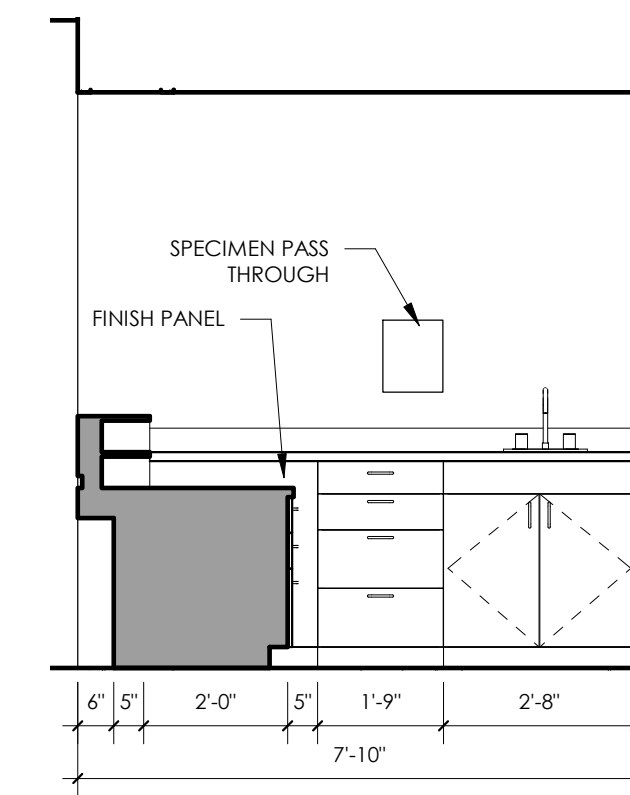
7 CLINIC TYPICAL EXAM
 A10.1C 3/8" = 1'-0"



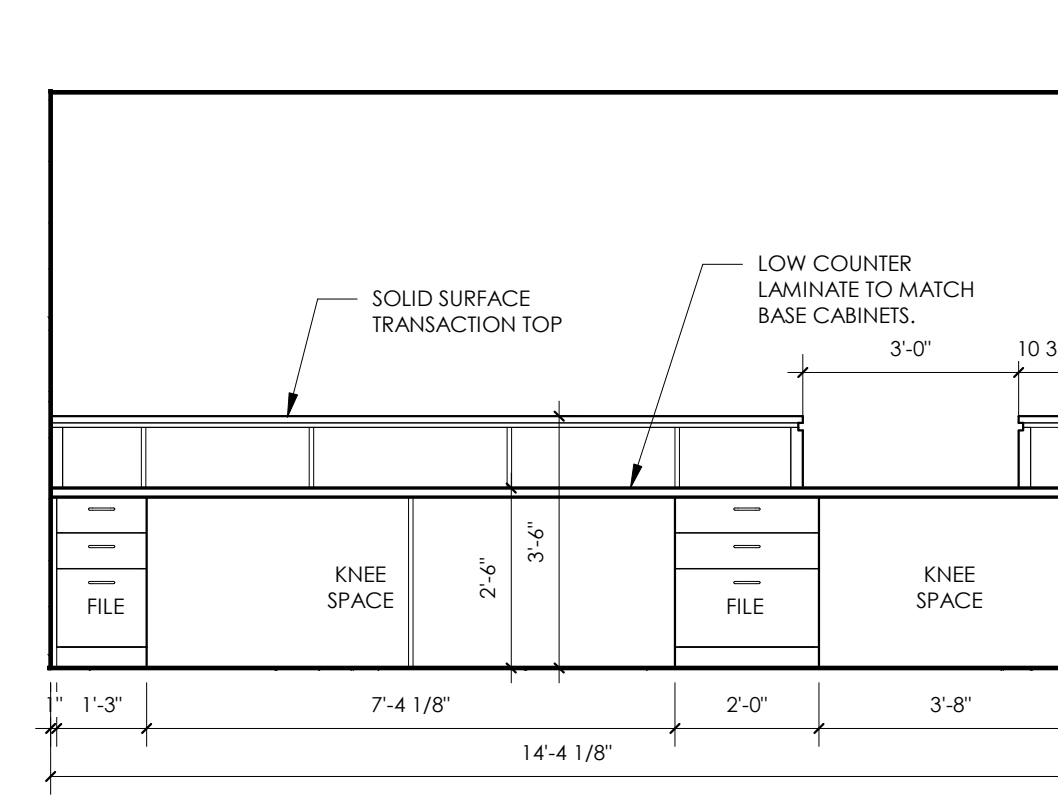
8 CLINIC NURSE STATION 1-411 A
 A10.1C 3/8" = 1'-0"



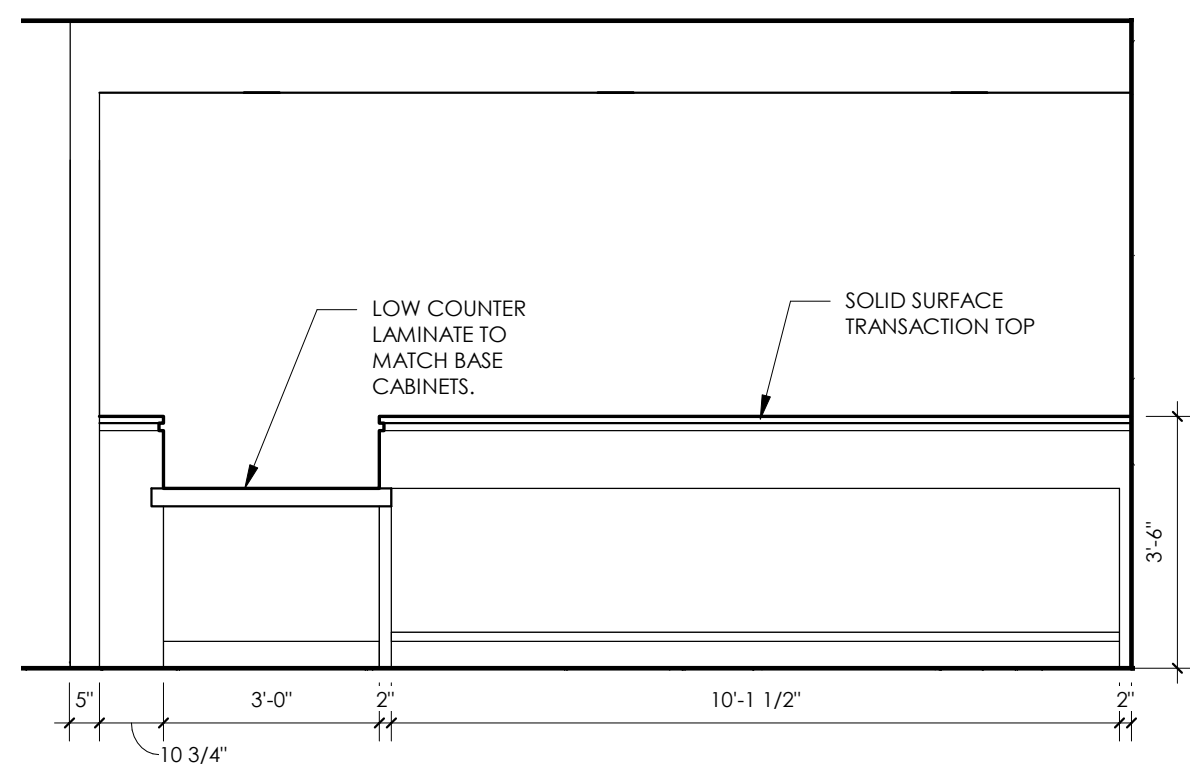
9 CLINIC NURSE STATION 1-411 B
 A10.1C 3/8" = 1'-0"



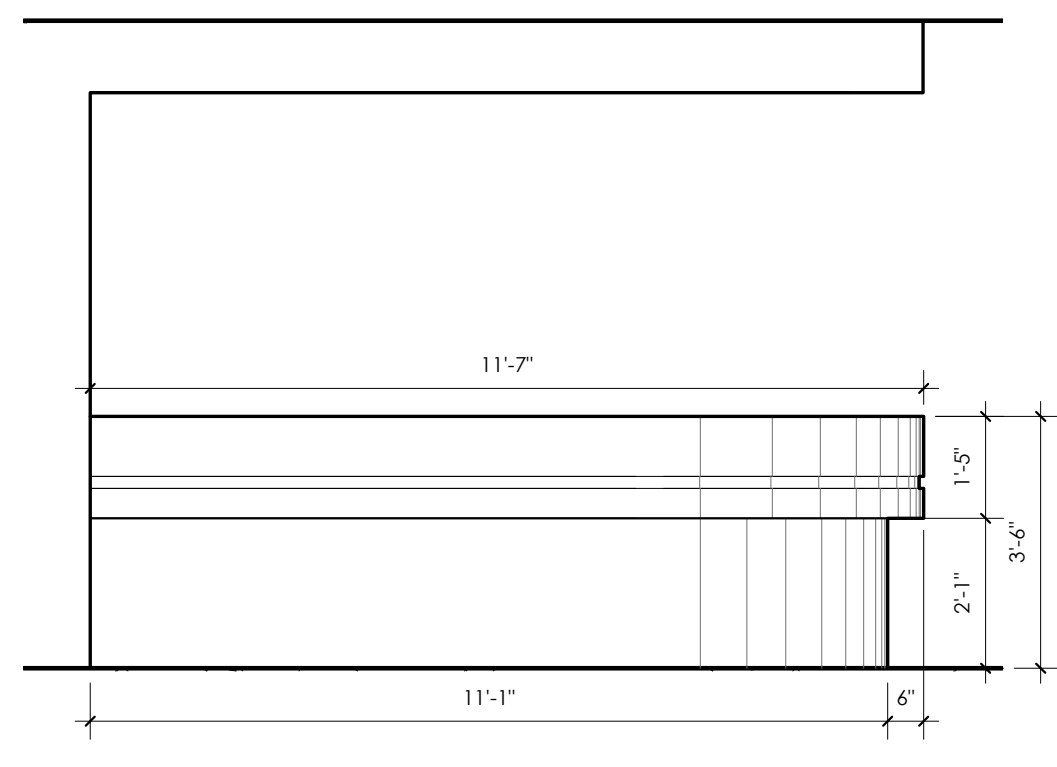
10 CLINIC NURSE STATION 1-411 C
 A10.1C 3/8" = 1'-0"



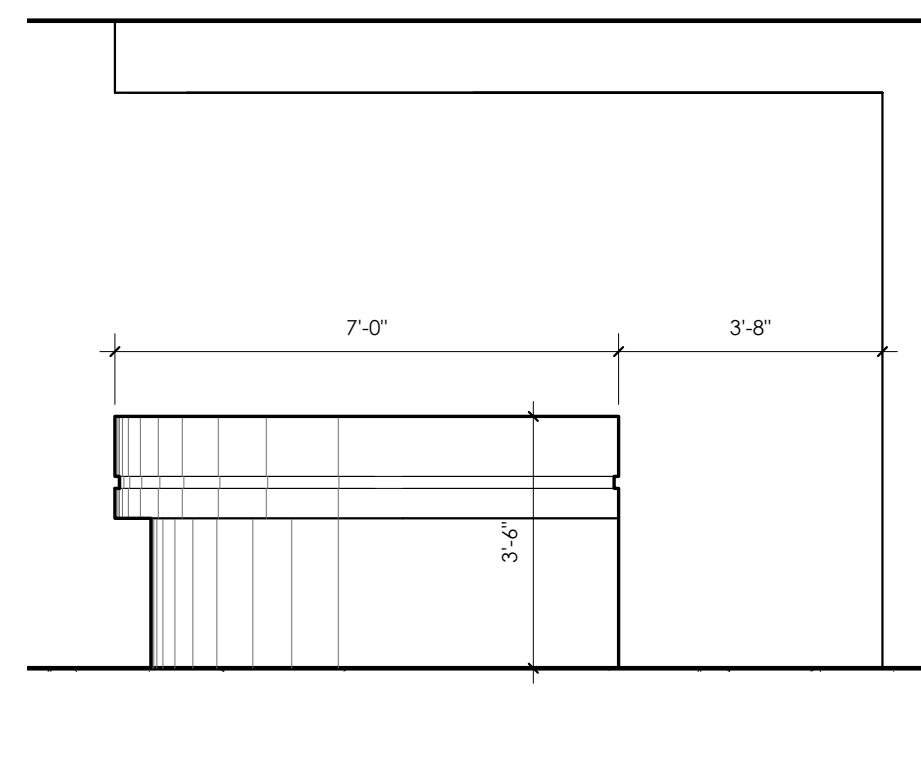
11 CLINIC COLLECTIONS A 1-413
 A10.1C 3/8" = 1'-0"



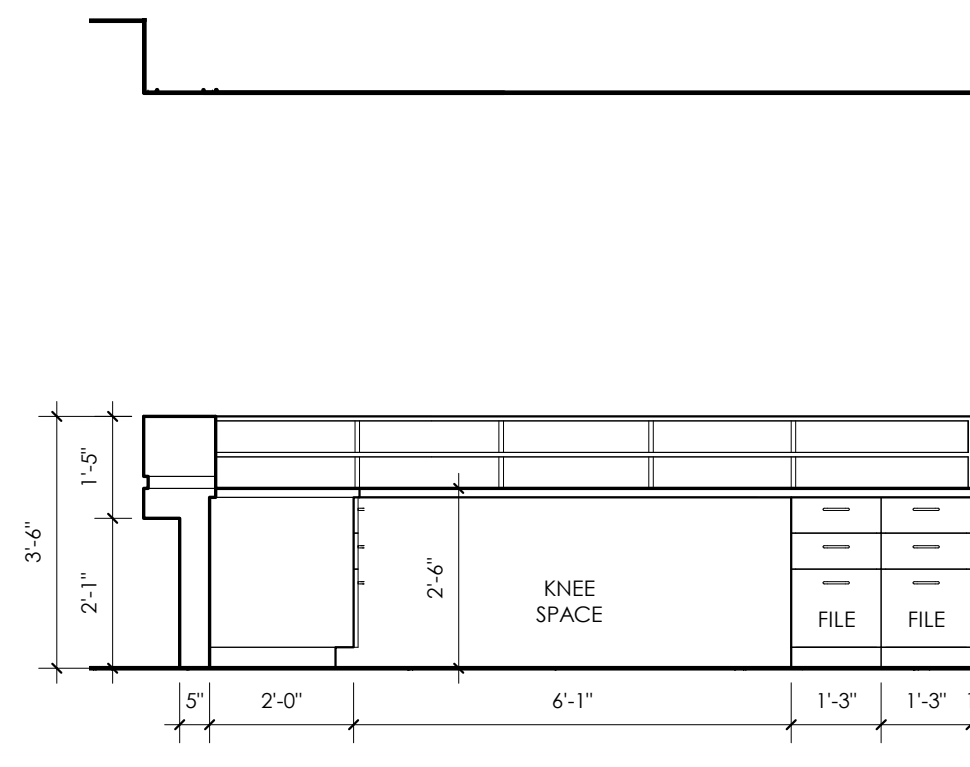
12 CLINIC COLLECTIONS B 1-413
 A10.1C 3/8" = 1'-0"



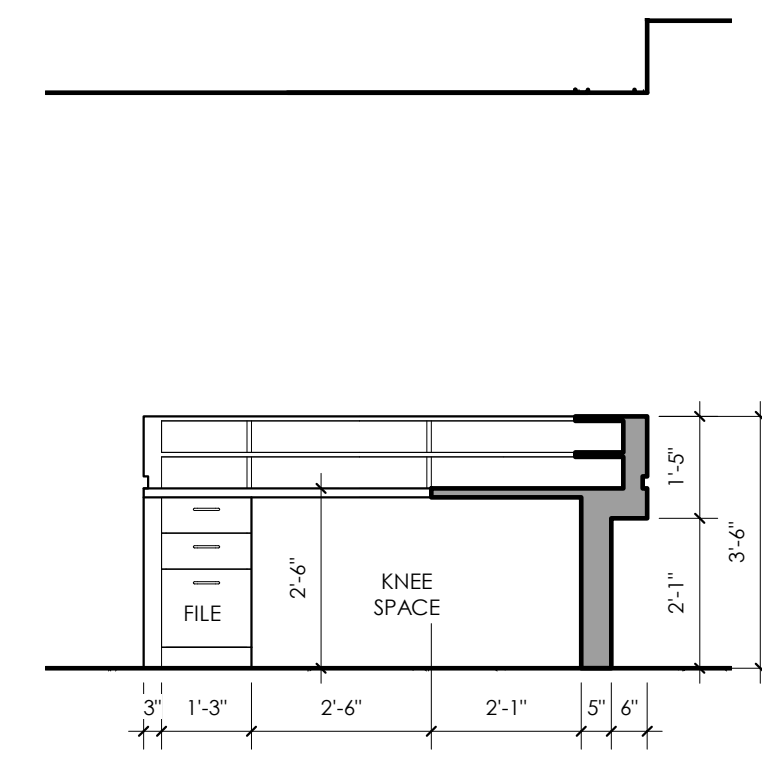
13 CLINIC NURSE STATION 1-425 A
 A10.1C 3/8" = 1'-0"



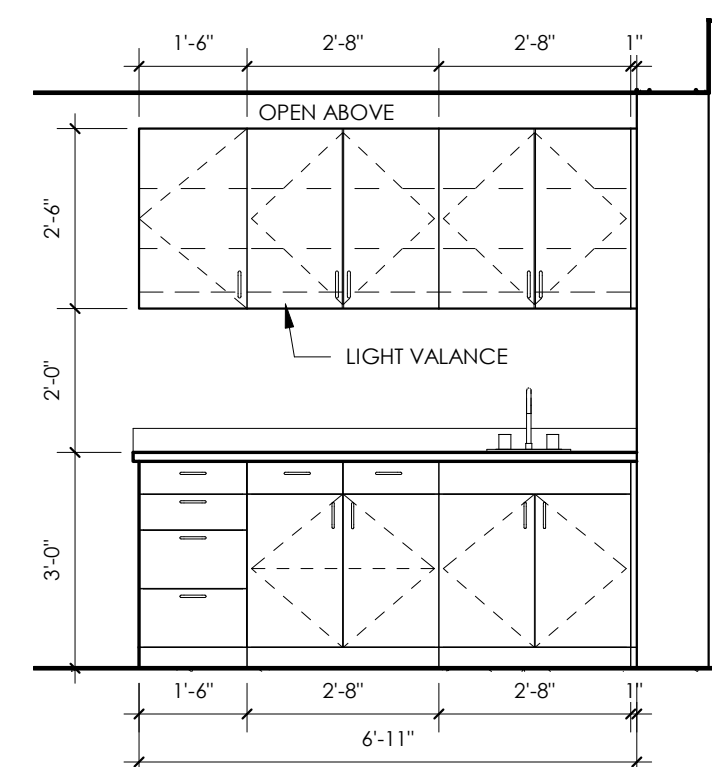
14 CLINIC NURSE STATION 1-425 B
 A10.1C 3/8" = 1'-0"



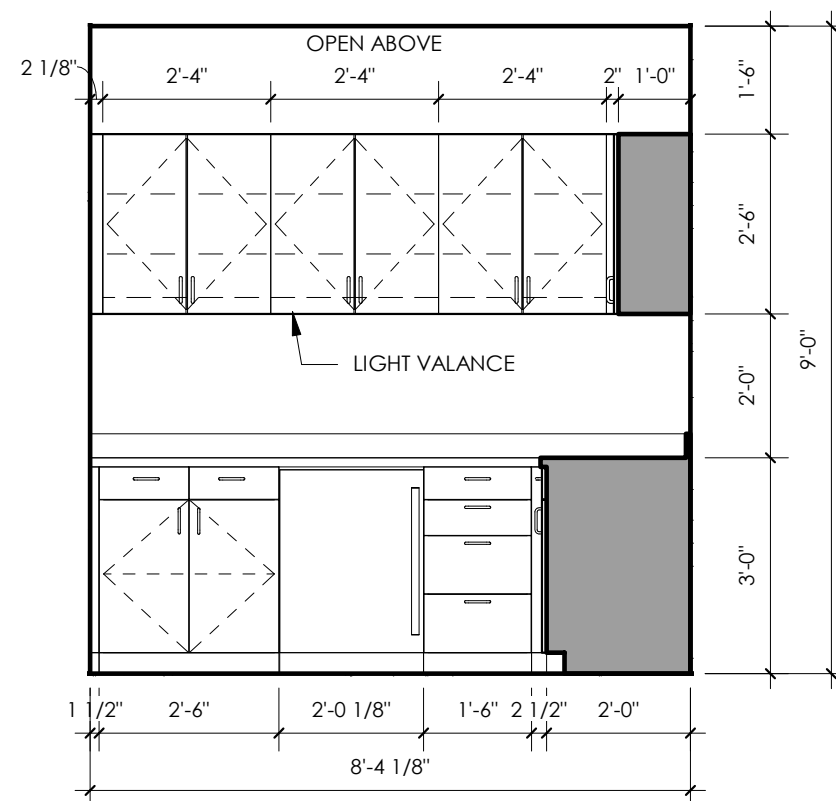
15 CLINIC NURSE STATION 1-425 C
 A10.1C 3/8" = 1'-0"



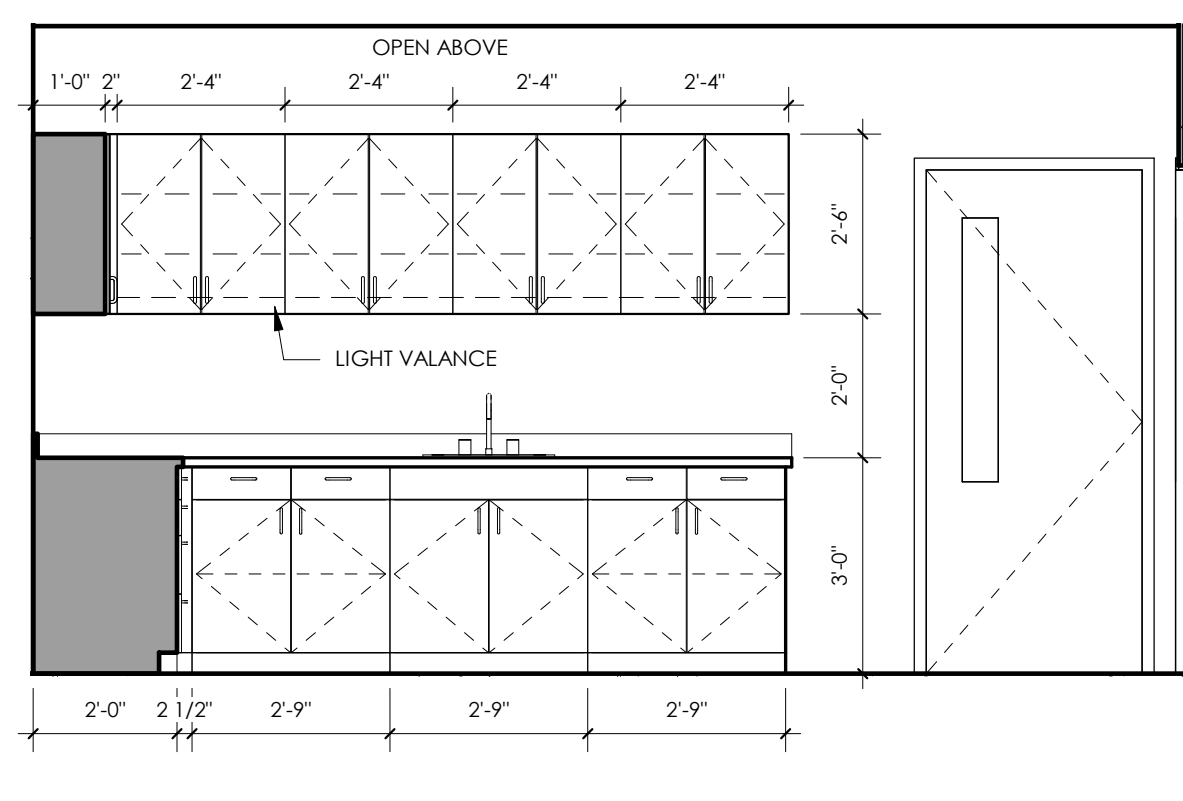
16 CLINIC NURSE STATION 1-425 D
 A10.1C 3/8" = 1'-0"



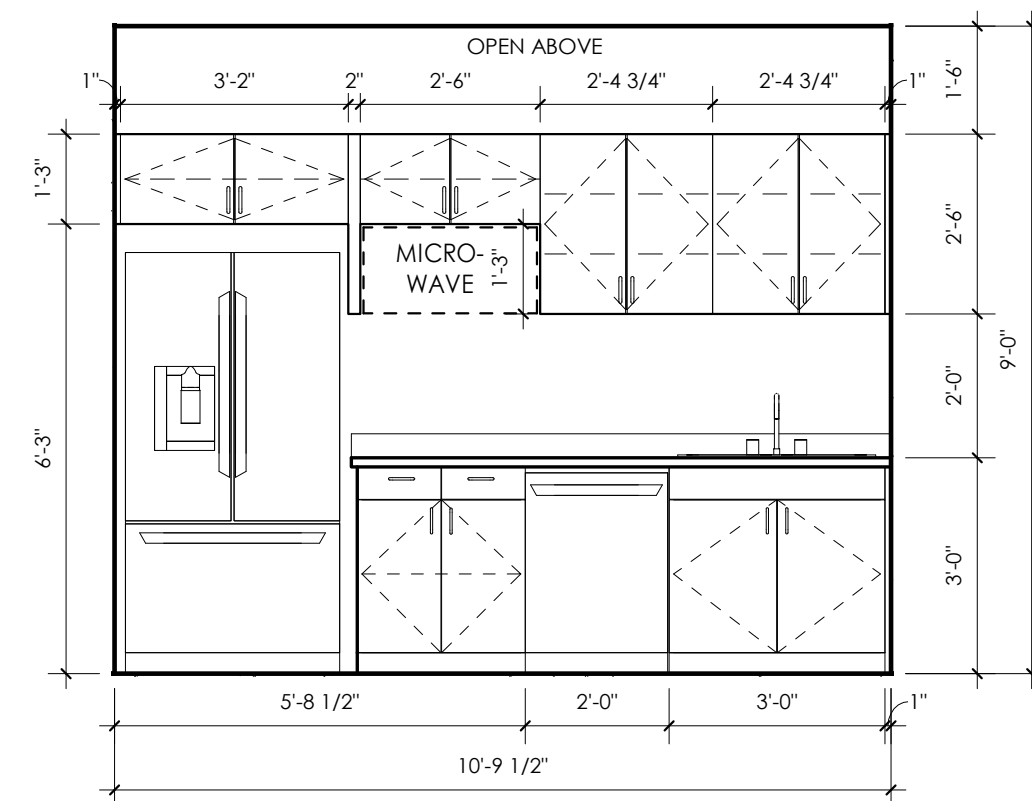
17 CLINIC NURSE STATION 1-425 E
 A10.1C 3/8" = 1'-0"



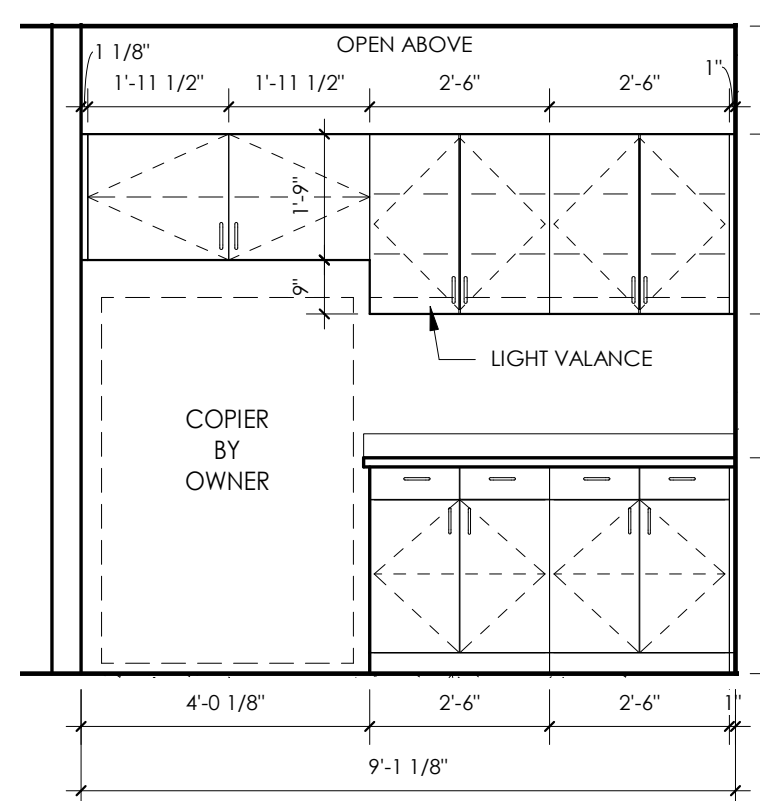
18 CLINIC LAB A 2-426
 A10.1C 3/8" = 1'-0"



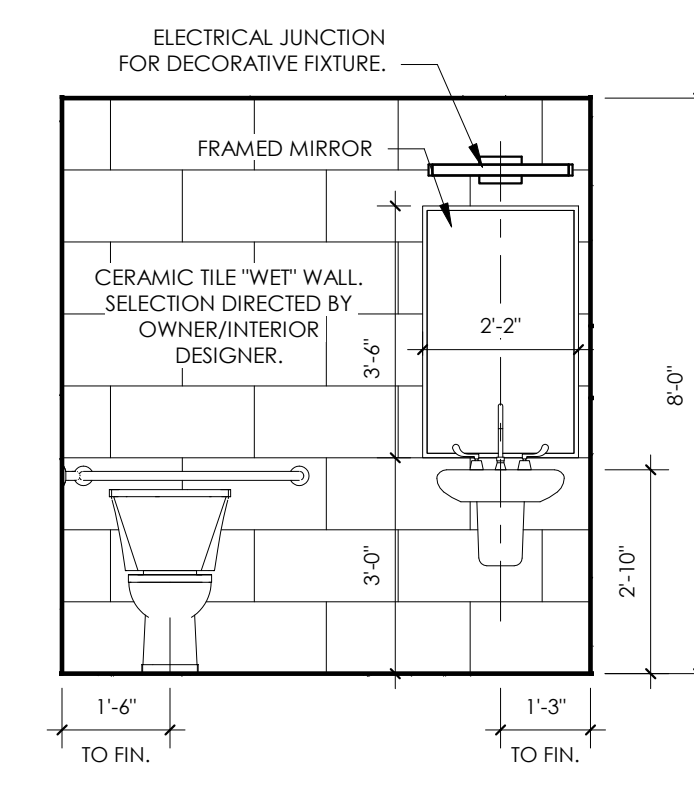
19 CLINIC LAB B 2-426
 A10.1C 3/8" = 1'-0"



20 CLINIC STAFF LOUNGE 1-437
 A10.1C 3/8" = 1'-0"

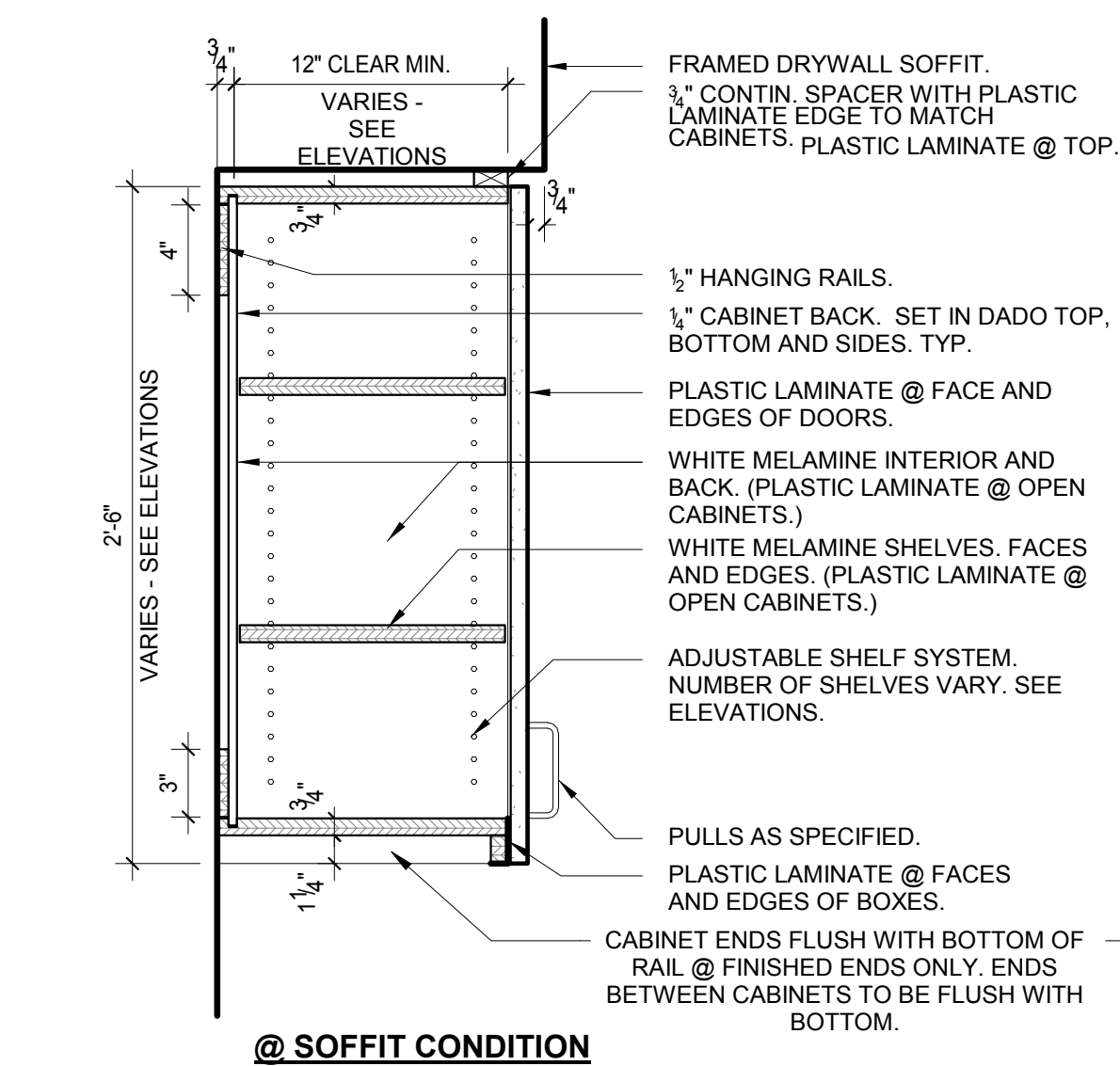


21 CLINIC BUSINESS 1-439
 A10.1C 3/8" = 1'-0"

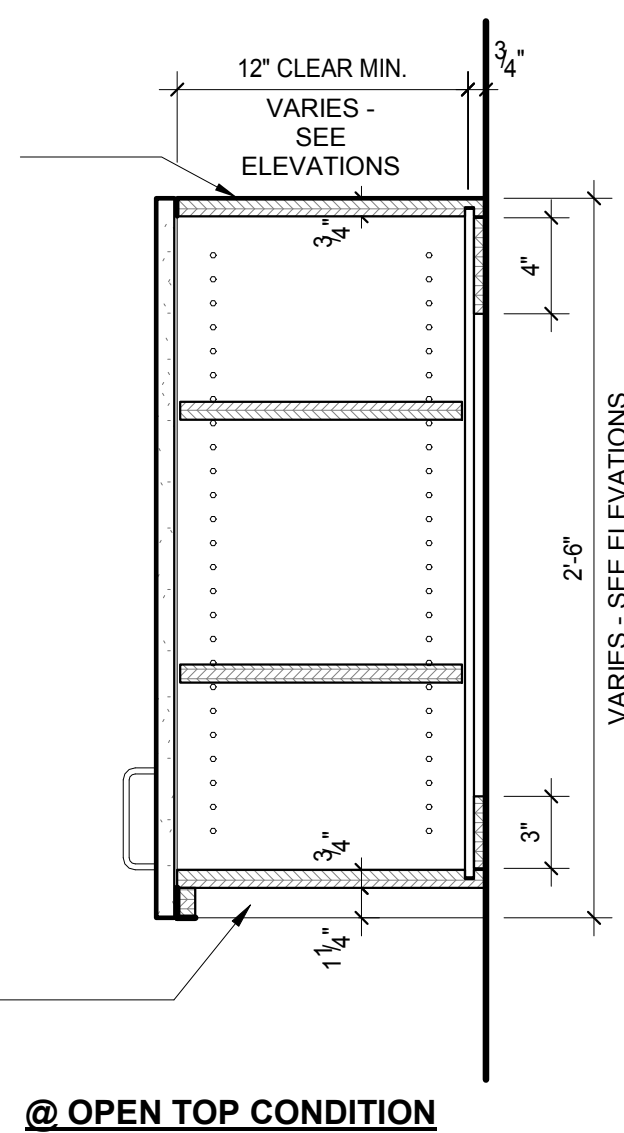


22 CLINIC TYPICAL RESTROOM
 A10.1C 3/8" = 1'-0"

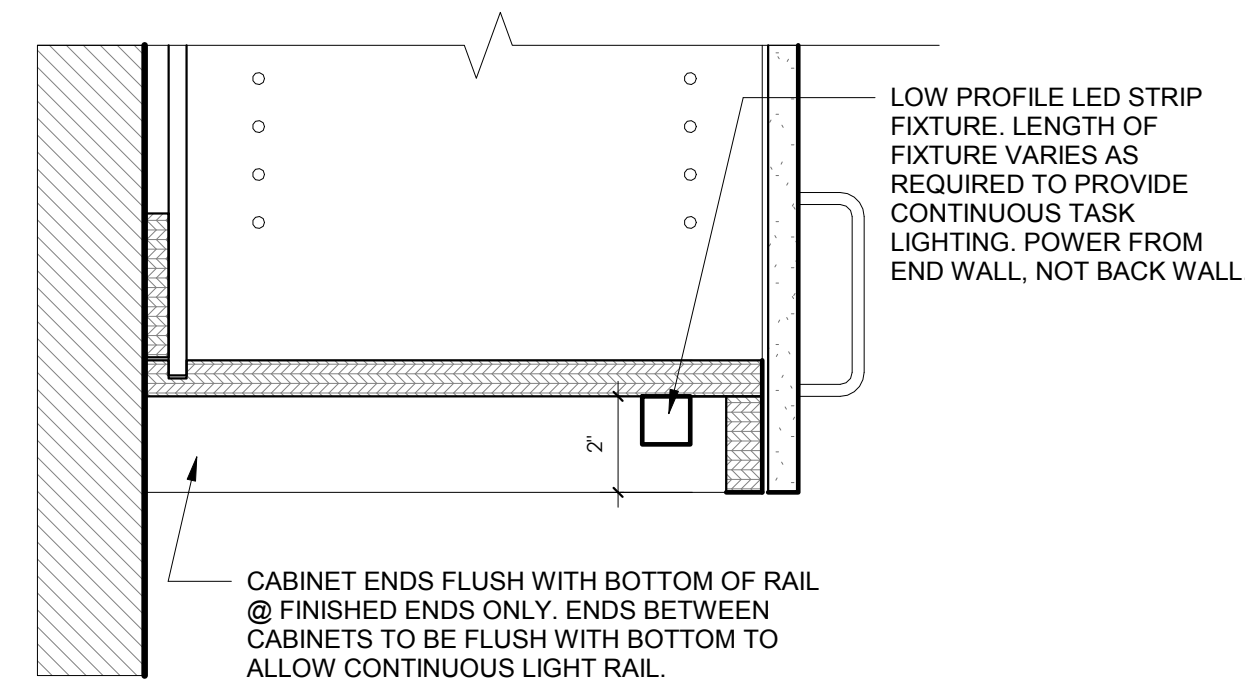
REFER TO SHEET A-6.1C FOR ADA FLOOR CLEARANCE AND ACCESSORY INFORMATION.



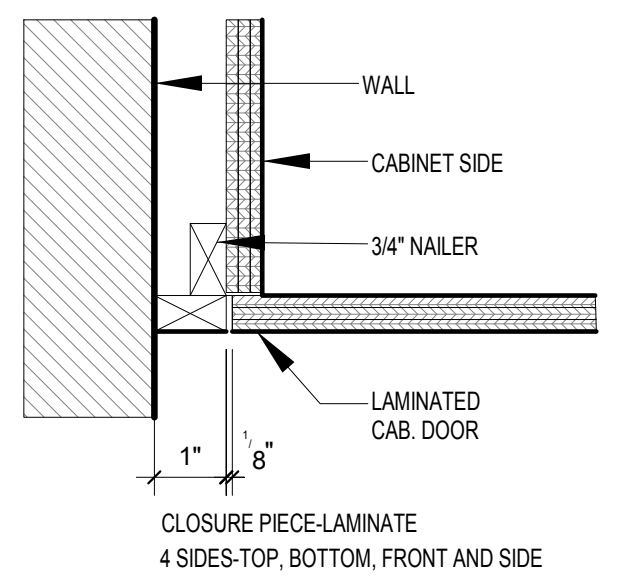
1 TYPICAL WALL CABINET PROFILES
A10.2C 1 1/2" = 1'-0"



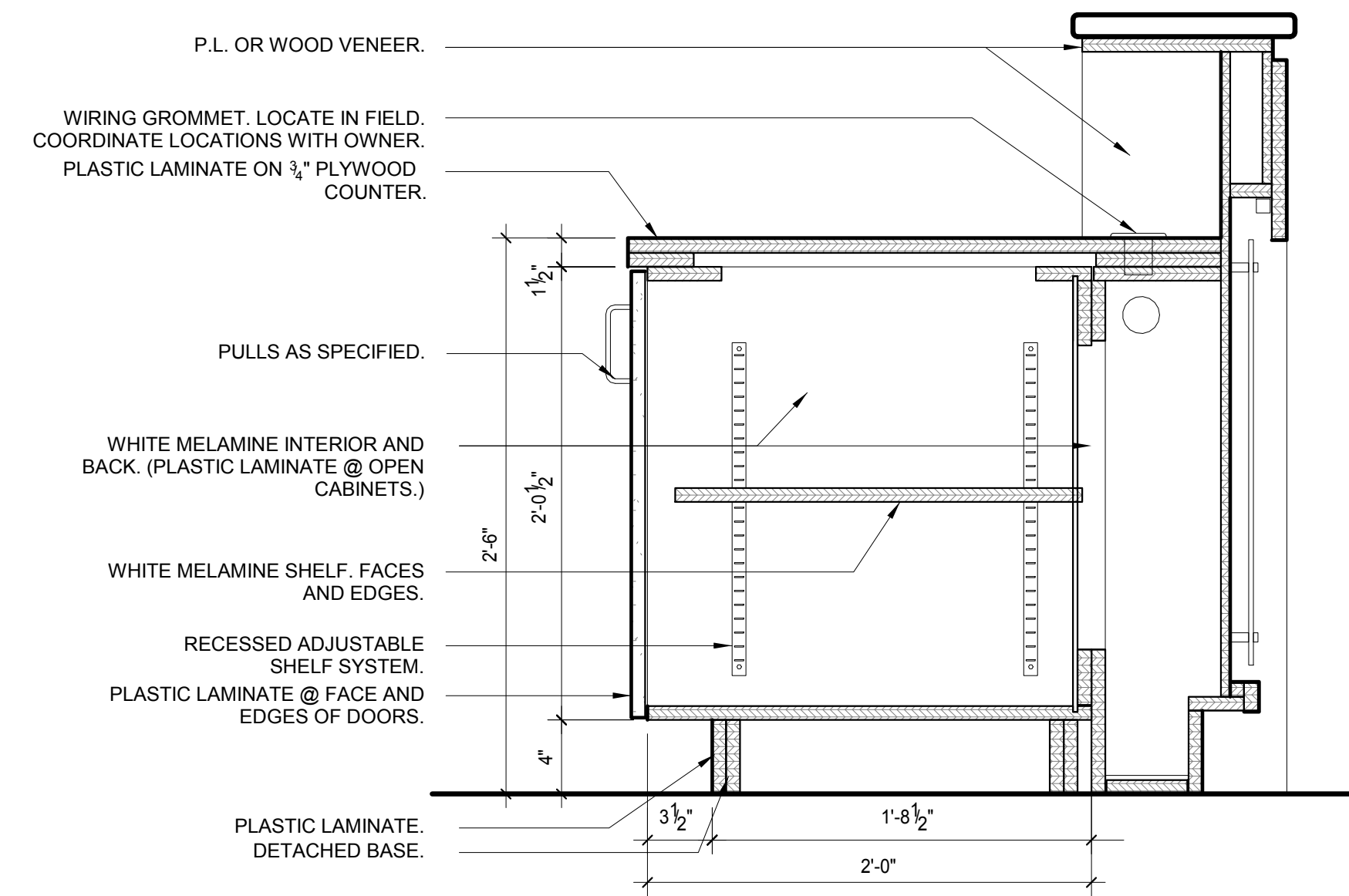
@ OPEN TOP CONDITION



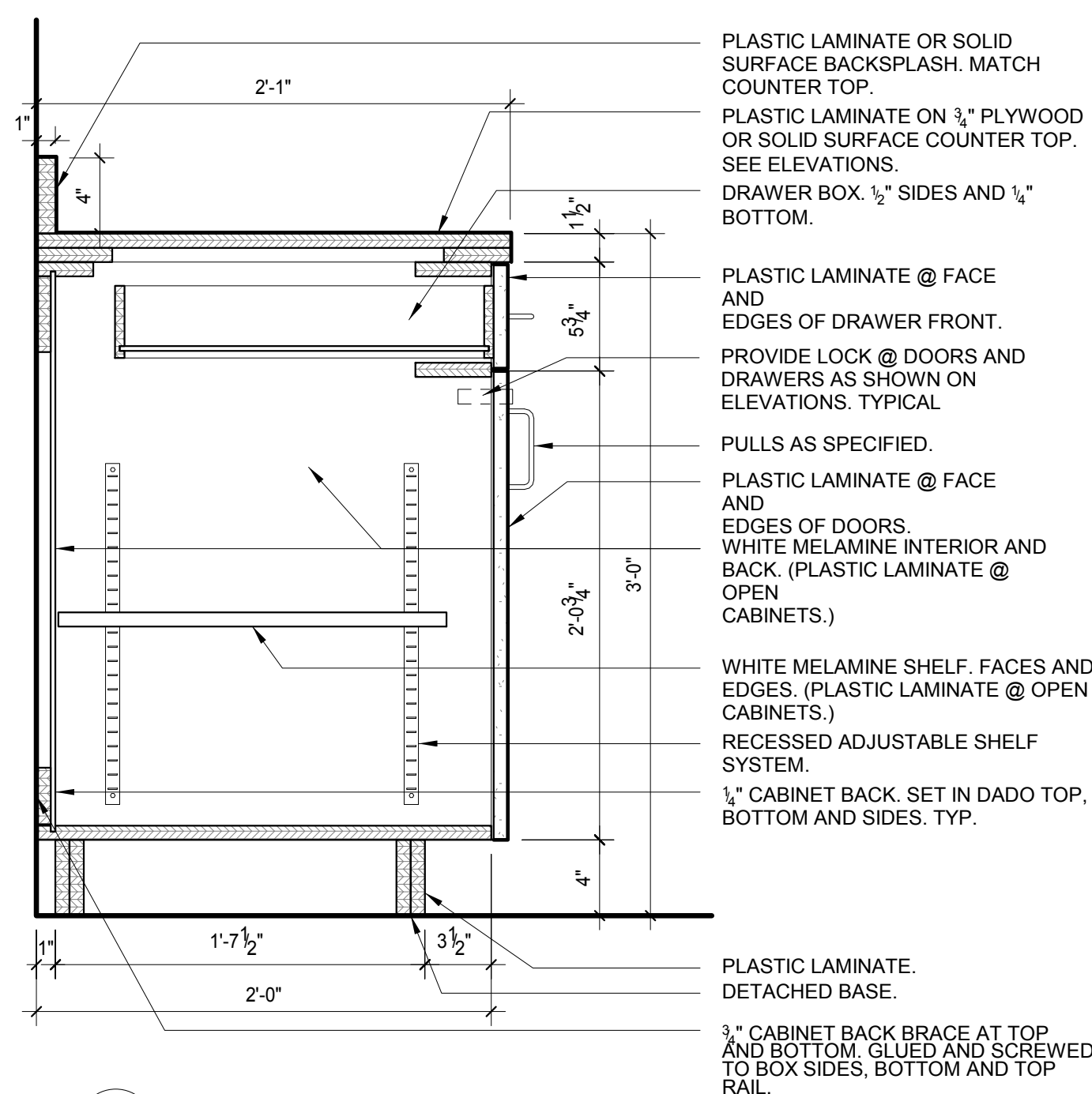
2 UNDER CABINET LIGHTING
A10.2C 3" = 1'-0"



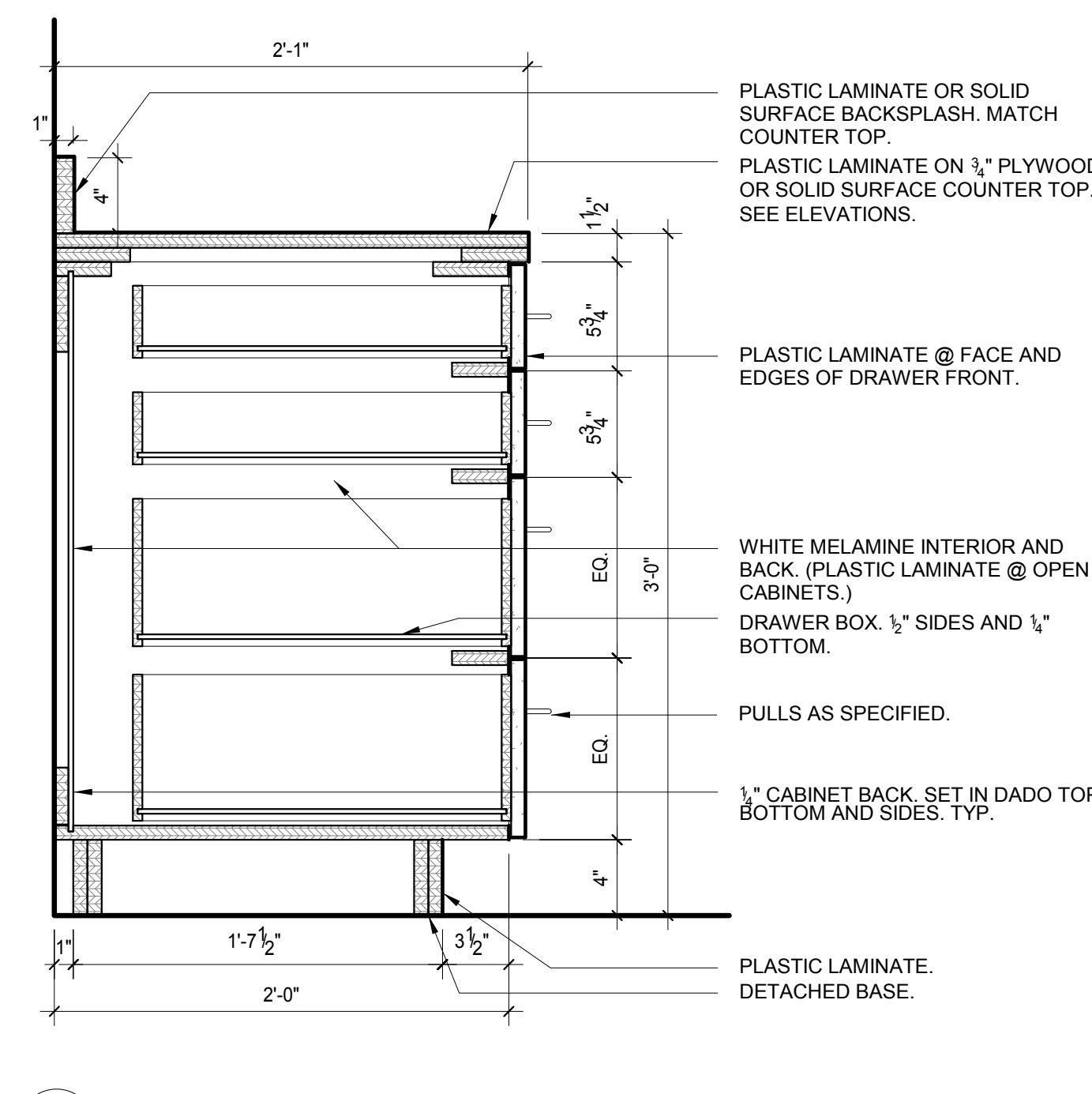
3 CABINET FILLER - PLAN DETAIL
A10.2C 3" = 1'-0"



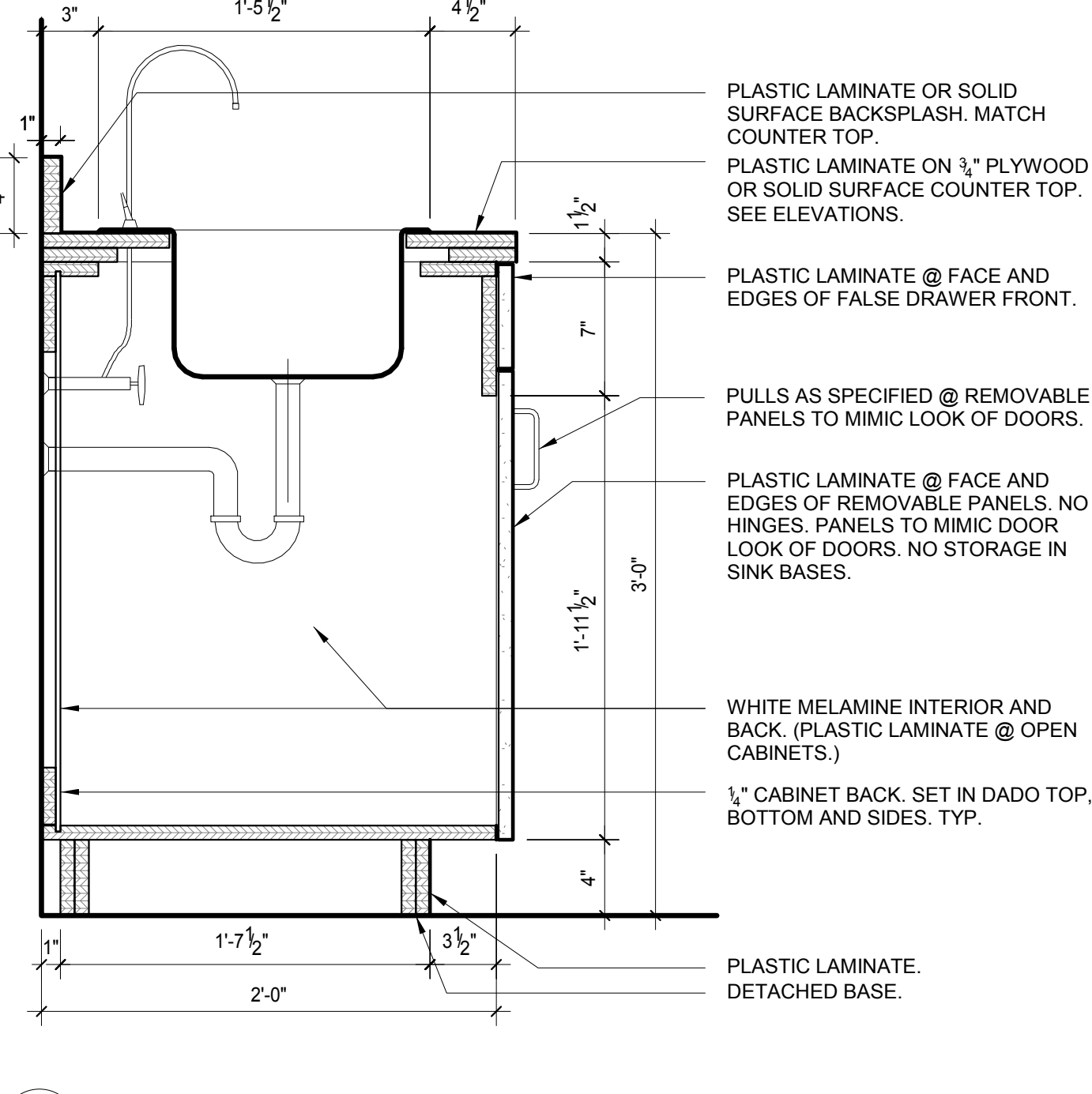
4 RECEPTION DESK - DOOR
A10.2C 1 1/2" = 1'-0"



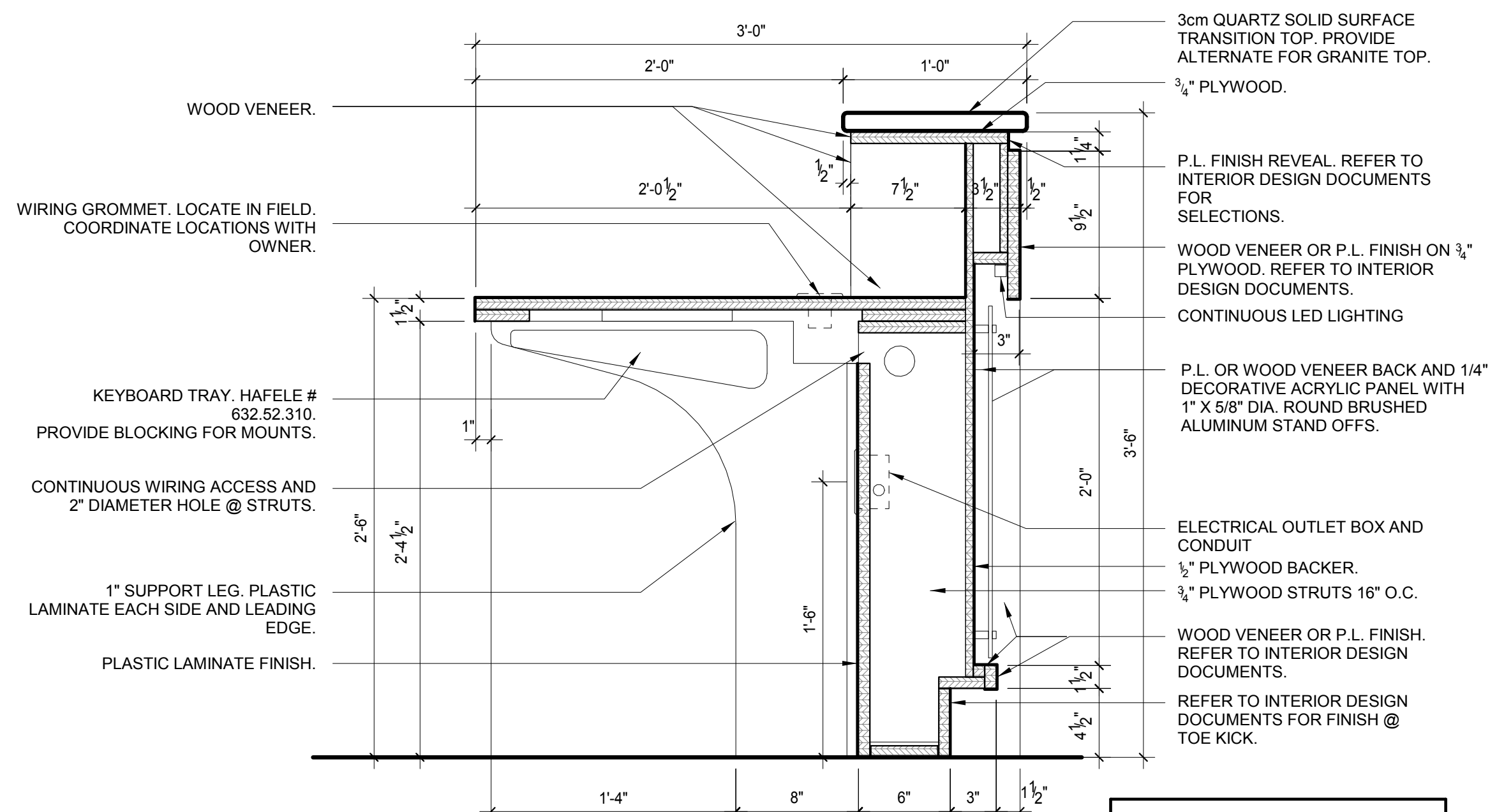
5 BASE CABINET PROFILE - TYPICAL
A10.2C 1 1/2" = 1'-0"



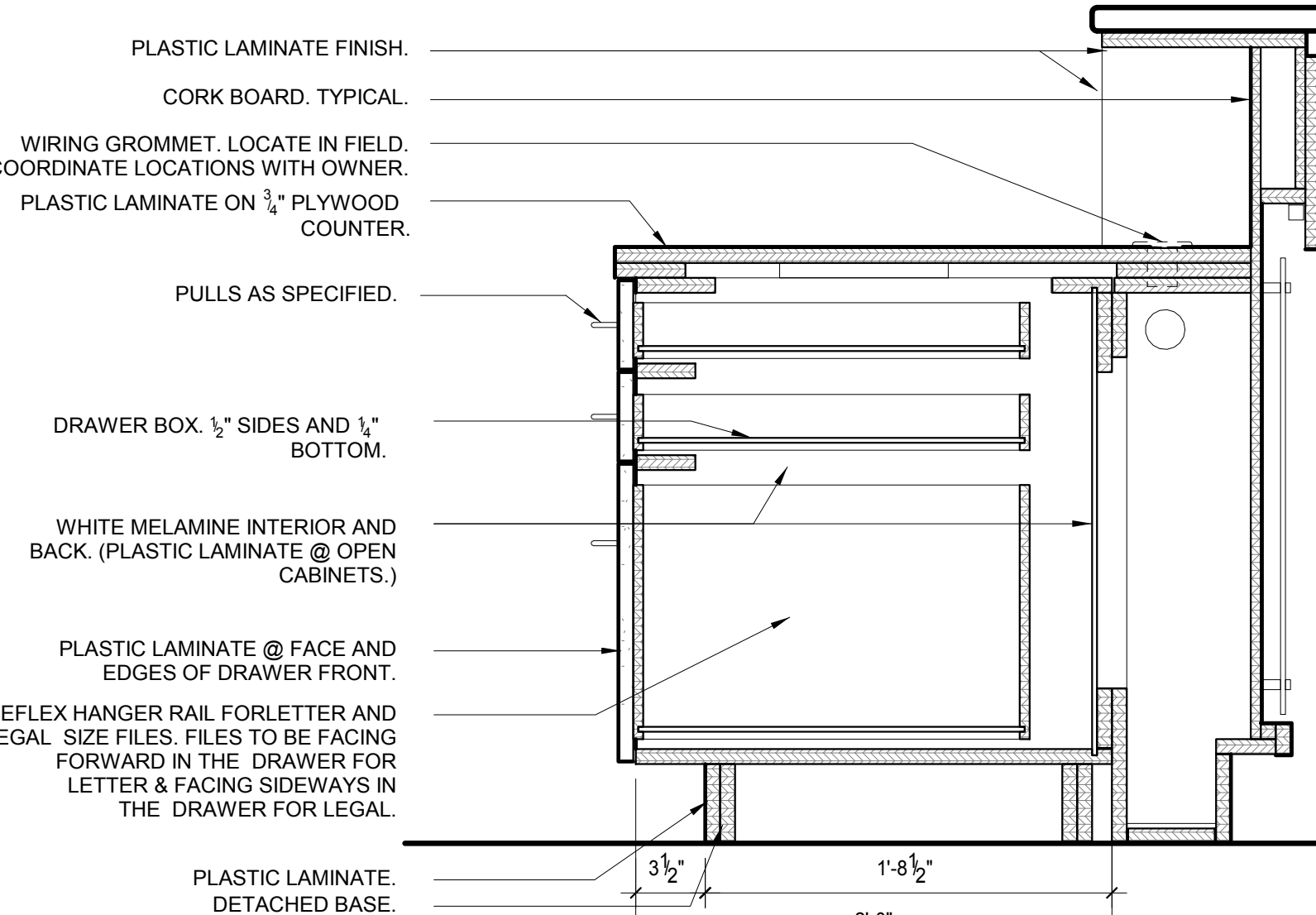
6 BASE CABINET PROFILE - 4 DRAWER
A10.2C 1 1/2" = 1'-0"



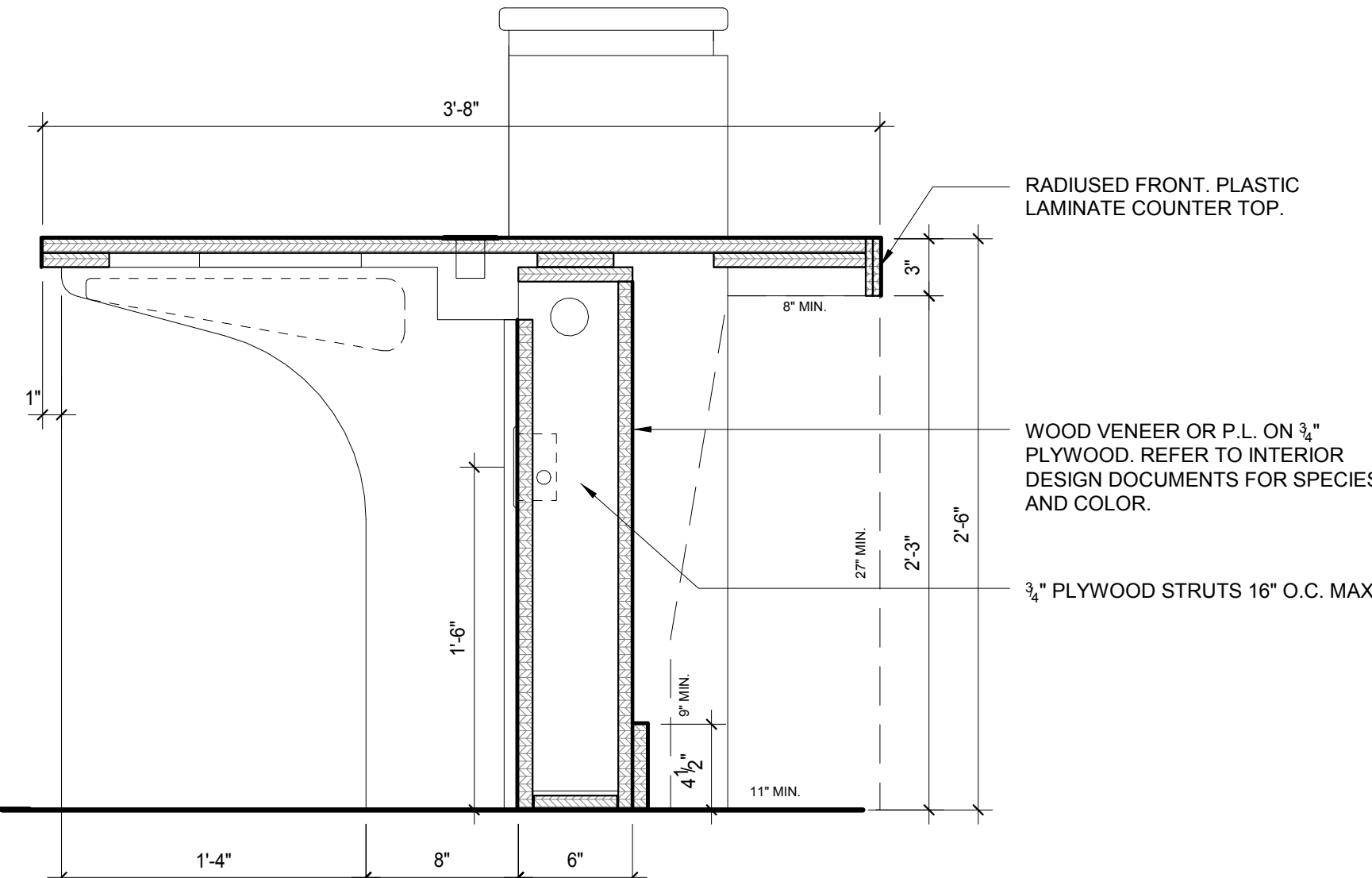
7 BASE CABINET PROFILE - SINK BASE
A10.2C 1 1/2" = 1'-0"



8 TYPICAL RECEPTION DESK PROFILE
A10.2C 1 1/2" = 1'-0"



9 RECEPTION DESK - FILE DRAWERS
A10.2C 1 1/2" = 1'-0"



10 RECEPTION DESK - ACCESS. COUNTER
A10.2C 1 1/2" = 1'-0"

SEAL

THIS DRAWING AND THE DESIGN THEREON IS THE PROPERTY OF GORDON & ASSOCIATES ARCHITECT, LLC. THEIR USE WITHOUT WRITTEN LICENSE IS PROHIBITED. NOT VALID FOR USE UNLESS SEAL IS AFFIXED.

© 2019

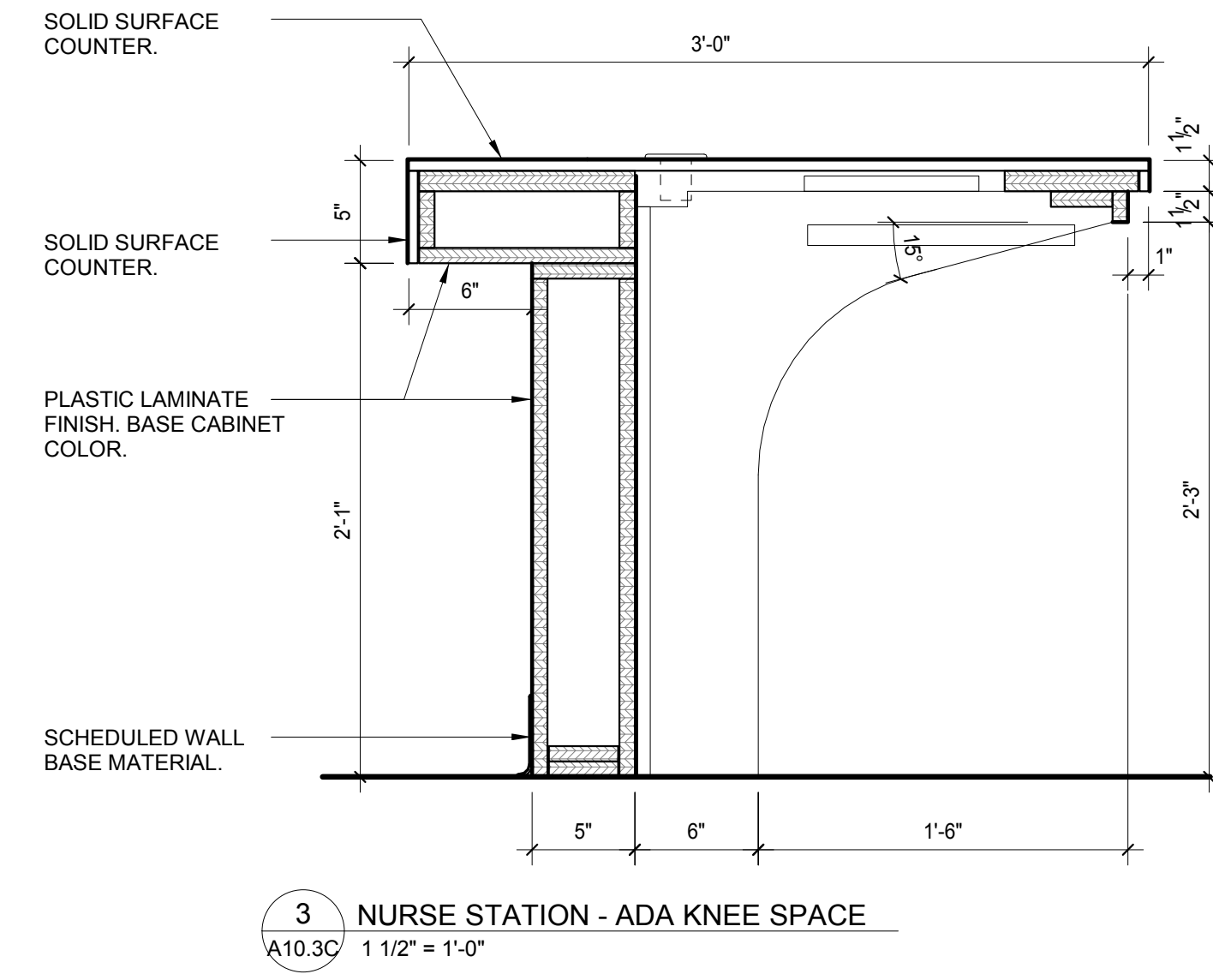
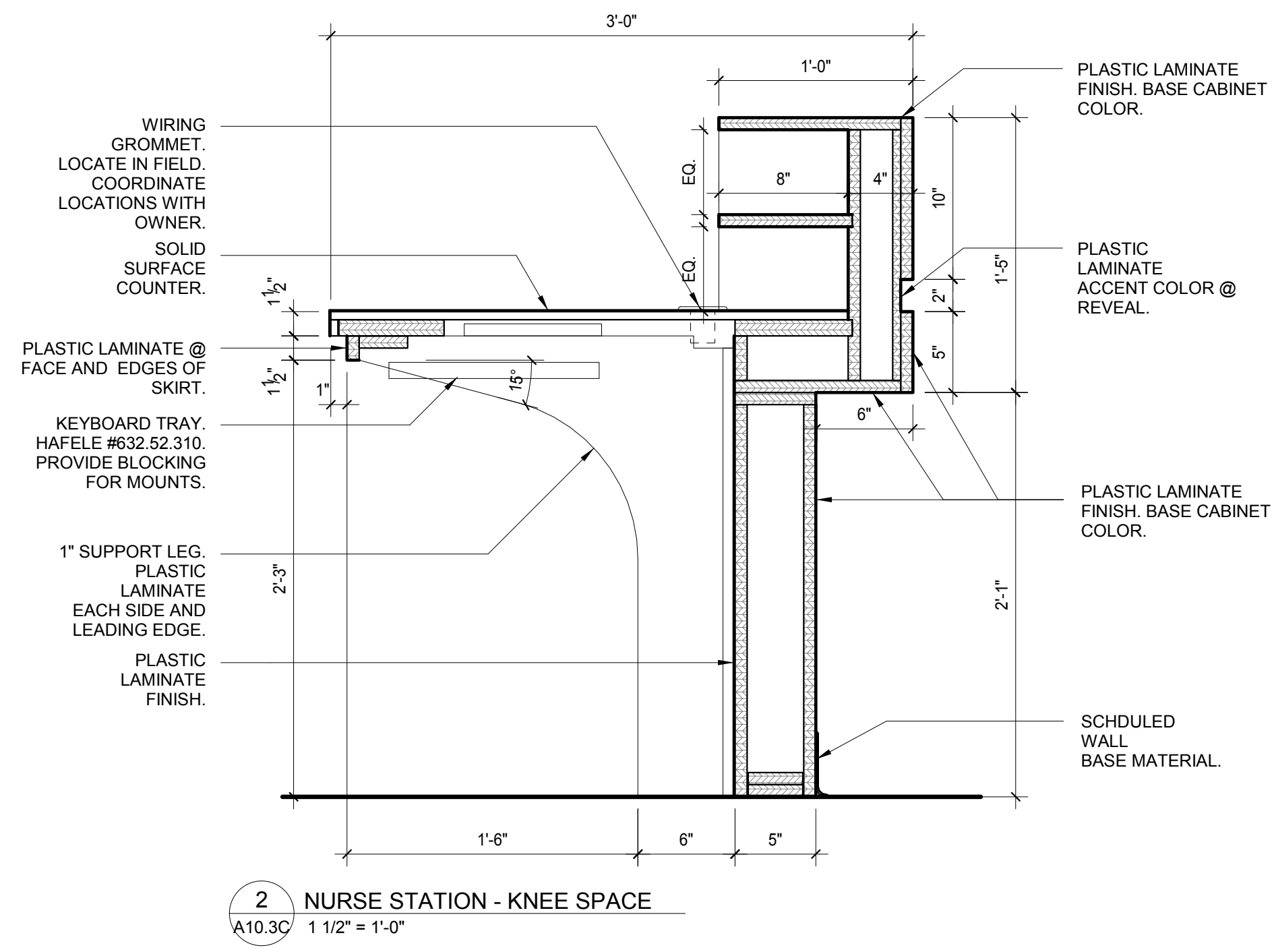
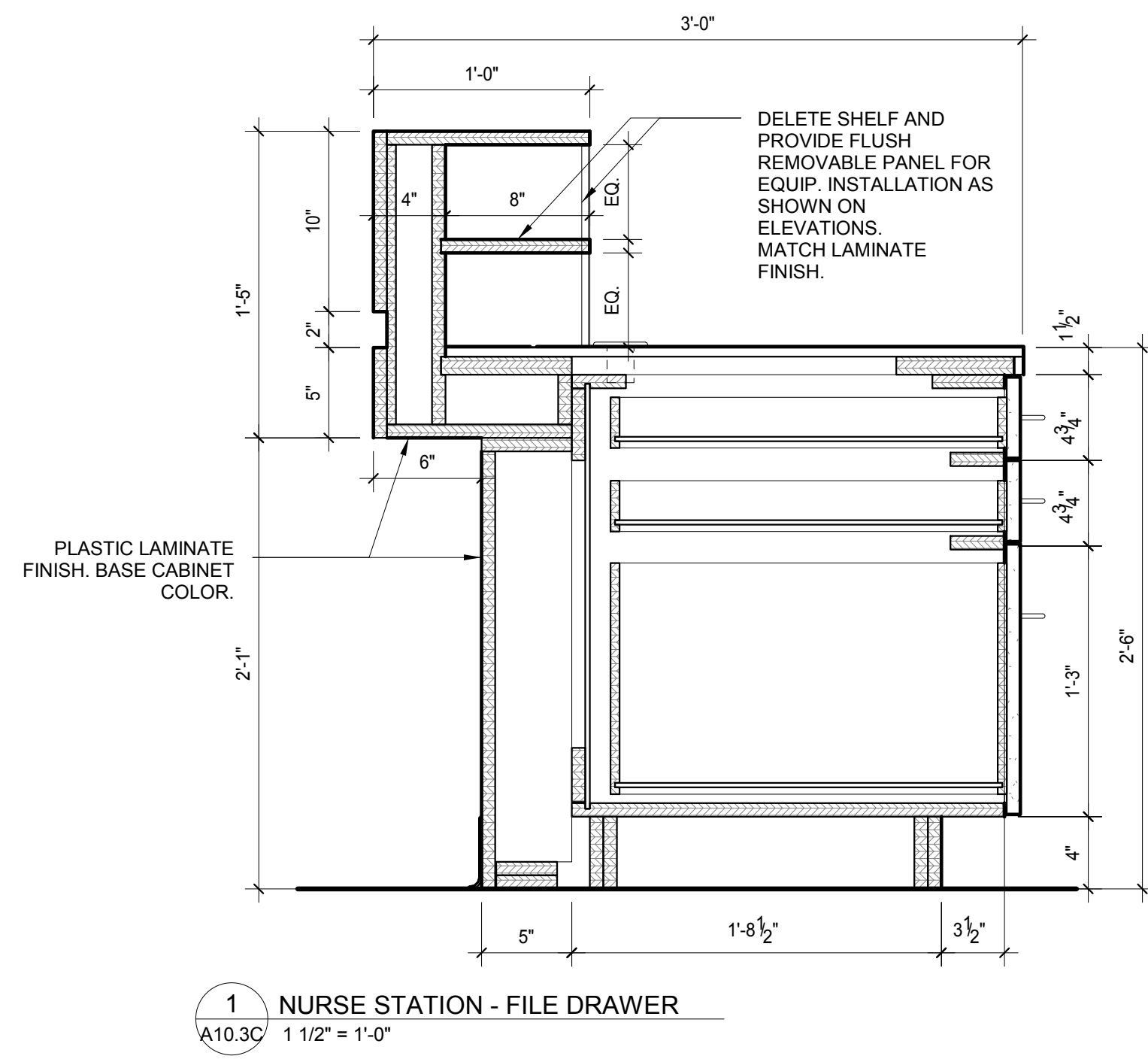
730 East Eflin Avenue
Mount Dora, Florida 32757
Telephone 352-383-4505
Facsimile 352-589-4485
AA-26200236

Gordon & Associates
ARCHITECT, LLC

PROJECT NO. 1903C
CONTENTS CASEWORK DETAILS - CLINIC
JACKSONVILLE MEDICAL MALL
PHASE 3 - MEDICAL OFFICE
ORANGE PARK, FLORIDA
INTERIOR IMPROVEMENTS

11/20/2019	REVISION

A10.2C



11/20/2019
A REVISION

PROJECT NO. 1903C
CONTENTS CASEWORK DETAILS - CLINIC

JACKSONVILLE MEDICAL MALL
PHASE 3 - MEDICAL OFFICE
ORANGE PARK, FLORIDA
INTERIOR IMPROVEMENTS



730 East Fifth Avenue
Mount Dora, Florida 32757
Telephone 352-383-4505
Facsimile 352-589-4685
AA26002361

THIS DRAWING AND THE DESIGN THEREON IS THE PROPERTY OF GORDON & ASSOCIATES ARCHITECT, LLC. THEIR USE WITHOUT WRITTEN LICENSE IS PROHIBITED. NOT VALID FOR USE UNLESS SEAL IS AFFIXED.
© 2019

SEAL

A10.3C