

## OFFICE SPACE **FOR LEASE**



Downtown office spaces for lease. Single offices available.  
Great location – near restaurants, shops, courthouse  
and county government offices.

# 825 WEBSTER ST. FAIRFIELD, CA

**1,776 SF AVAILABLE**

**ZONED**

**HO - MIXED USE**

**PREMIER COMMERCIAL REAL ESTATE SERVICES**  
1300 Oliver Rd, Suite 300 Fairfield, CA 94534 | 707-436-7300

**RANDY DAWSON**  
LIC # 00953846  
RANDY@PCRES.NET

**MEGAN NUNES**  
LIC # 02209225  
MEGAN@PCRES.NET

**707-436-7300**



## OFFICE SPACE **FOR LEASE**



### BUILDING HIGHLIGHTS

- Affordable office space
- Move-in ready
- General Office Use
- Amazing corner lot location
- Street parking available with lots of onsite parking
- Near Downtown Shops/Restaurants
- Signage available
- Near the courthouse and county government offices

### DEMOGRAPHICS

	2 MILES	5 MILES	10 MILES
2024 POPULATION	64,133	121,917	244,476
2029 POPULATION PROJECTION	63,366	120,455	241,963

# 825 WEBSTER ST. FAIRFIELD, CA

## 1,776 SF AVAILABLE

ZONED

**HO - MIXED USE**

**PREMIER COMMERCIAL REAL ESTATE SERVICES**  
1300 Oliver Rd, Suite 300 Fairfield, CA 94534 | 707-436-7300

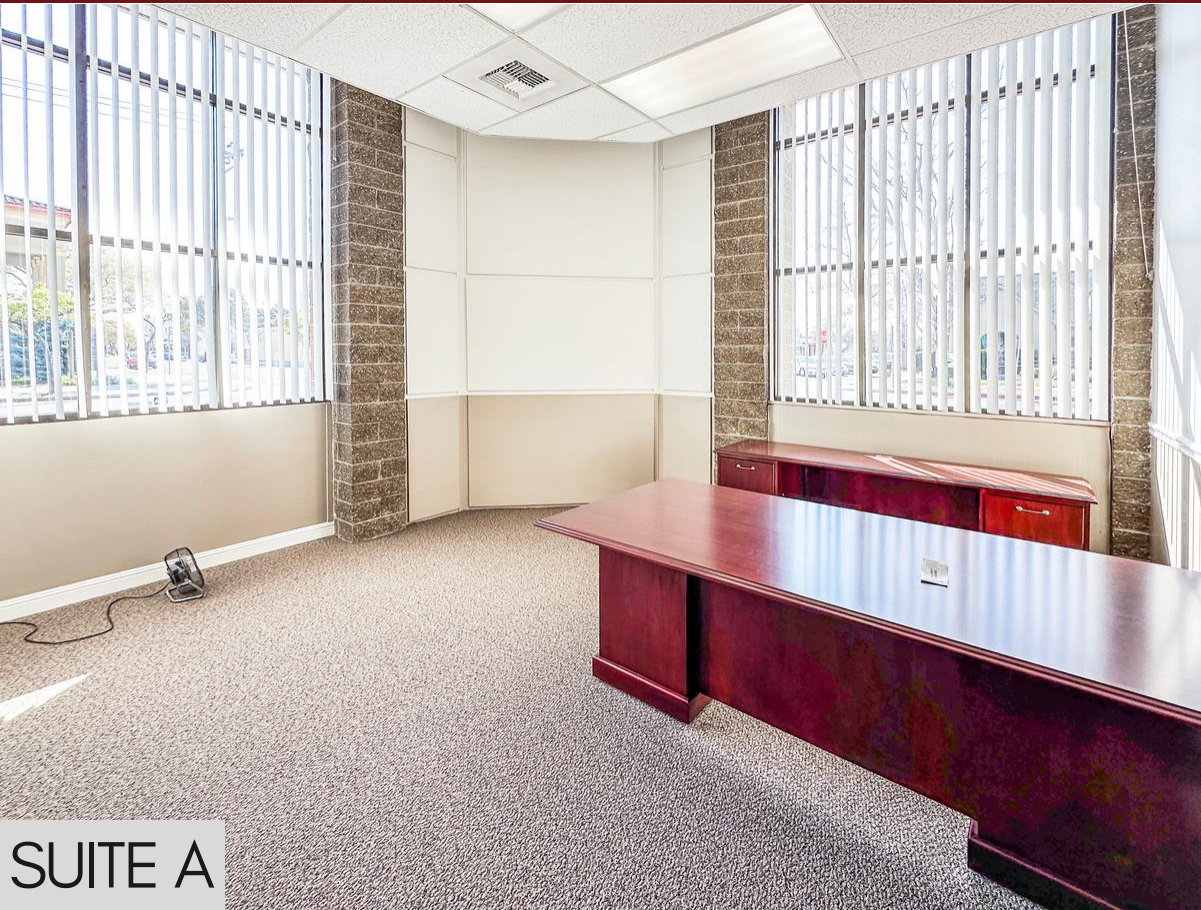
**RANDY DAWSON**  
LIC # 00953846  
RANDY@PCRES.NET

**MEGAN NUNES**  
LIC # 02209225  
MEGAN@PCRES.NET

**707-436-7300**



## OFFICE SPACE FOR LEASE



SUITE A



# 825 WEBSTER ST. FAIRFIELD, CA

1,776 SF AVAILABLE

ZONED

HO - MIXED USE

**PREMIER COMMERCIAL REAL ESTATE SERVICES**  
1300 Oliver Rd, Suite 300 Fairfield, CA 94534 | 707-436-7300

RANDY DAWSON  
LIC # 00953846  
RANDY@PCRES.NET

MEGAN NUNES  
LIC # 02209225  
MEGAN@PCRES.NET

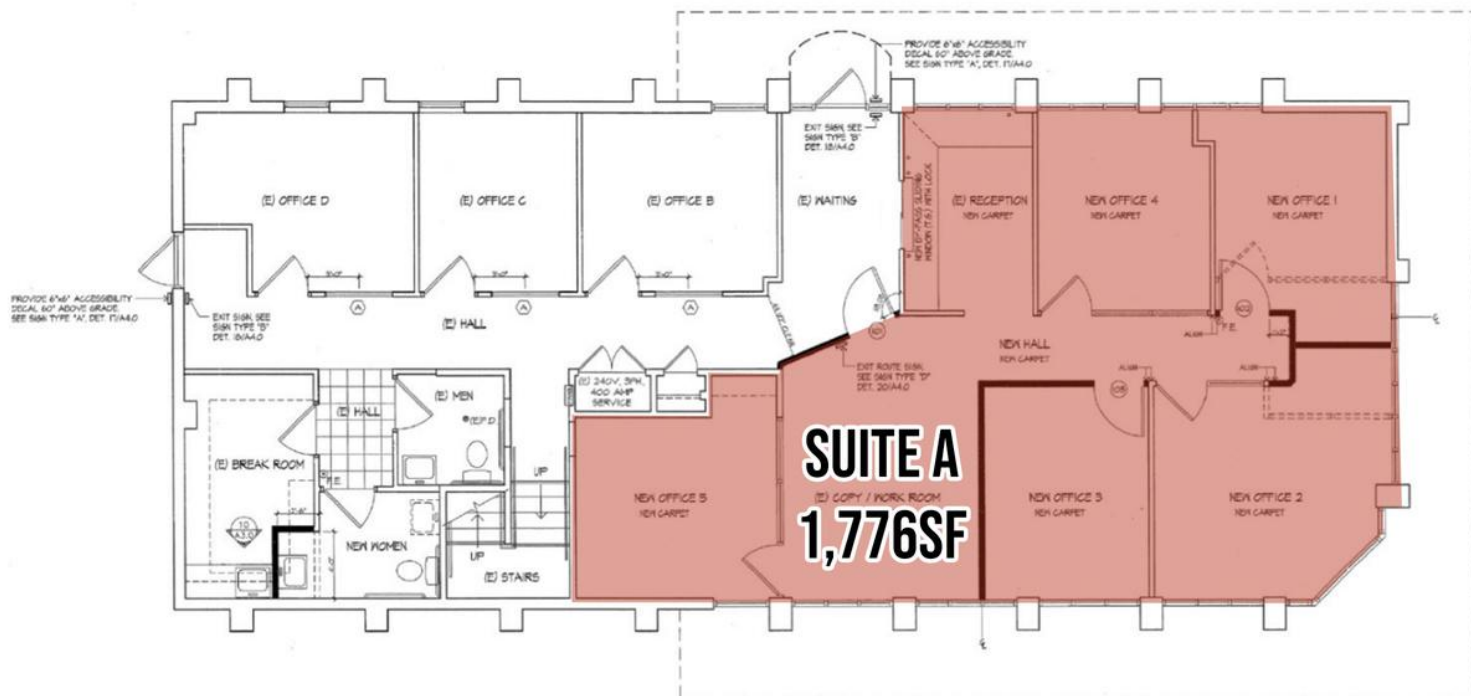
707-436-7300



## OFFICE SPACE FOR LEASE

### FLOOR PLAN

NOT TO SCALE



### AVAILABLE SUITE

#### FIRST FLOOR

Suite A 1,776 SF \$1.95/SF + utilities

Suite C **LEASED**

Suite D **LEASED**

# 825 WEBSTER ST. FAIRFIELD, CA

## 1,776 SF AVAILABLE

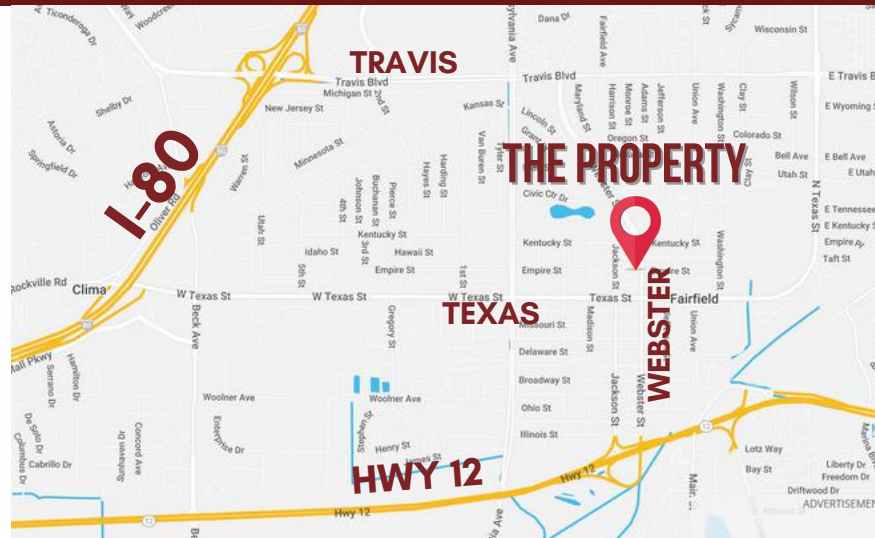
## ZONED

## HO - MIXED USE



# OFFICE SPACE FOR LEASE

## VICINITY MAP



## AERIAL MAP



**825 WEBSTER ST. FAIRFIELD, CA**

**1,776 SF AVAILABLE**

**ZONED**

**HO - MIXED USE**

**PREMIER COMMERCIAL REAL ESTATE SERVICES**  
1300 Oliver Rd, Suite 300 Fairfield, CA 94534 | 707-436-7300

**RANDY DAWSON**  
LIC # 00953846  
RANDY@PCRES.NET

**MEGAN NUNES**  
LIC # 02209225  
MEGAN@PCRES.NET

**707-436-7300**