

370 Oser Avenue Hauppauge NY

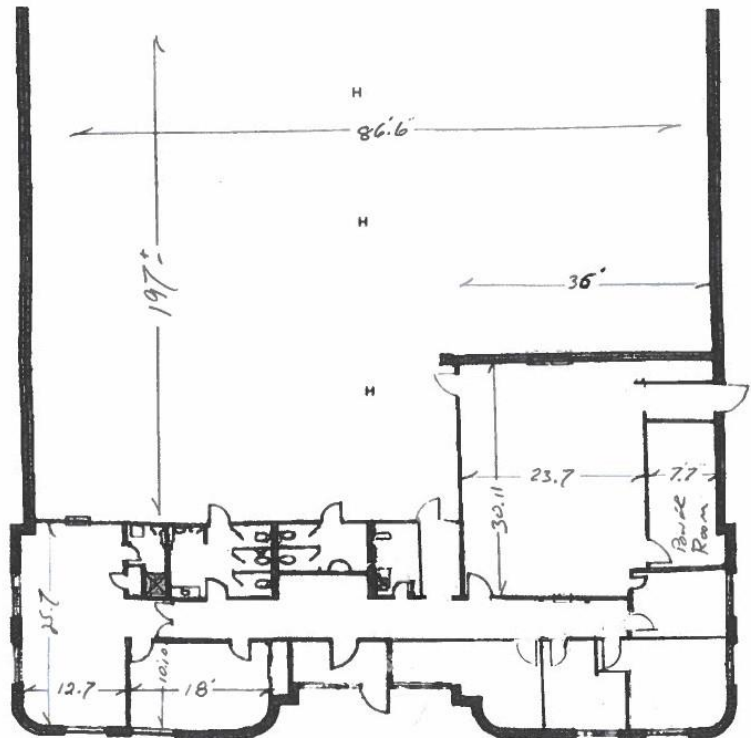


This Building is near the start
of Oser Avenue in the
1,000-acre
Hauppauge Industrial Park

Easy to get to
Near all major roads
Just off Long Island Expressway,
Northern State
and Sagtikos Pkwy

370 Oser Ave. Hauppauge
20,000 SF

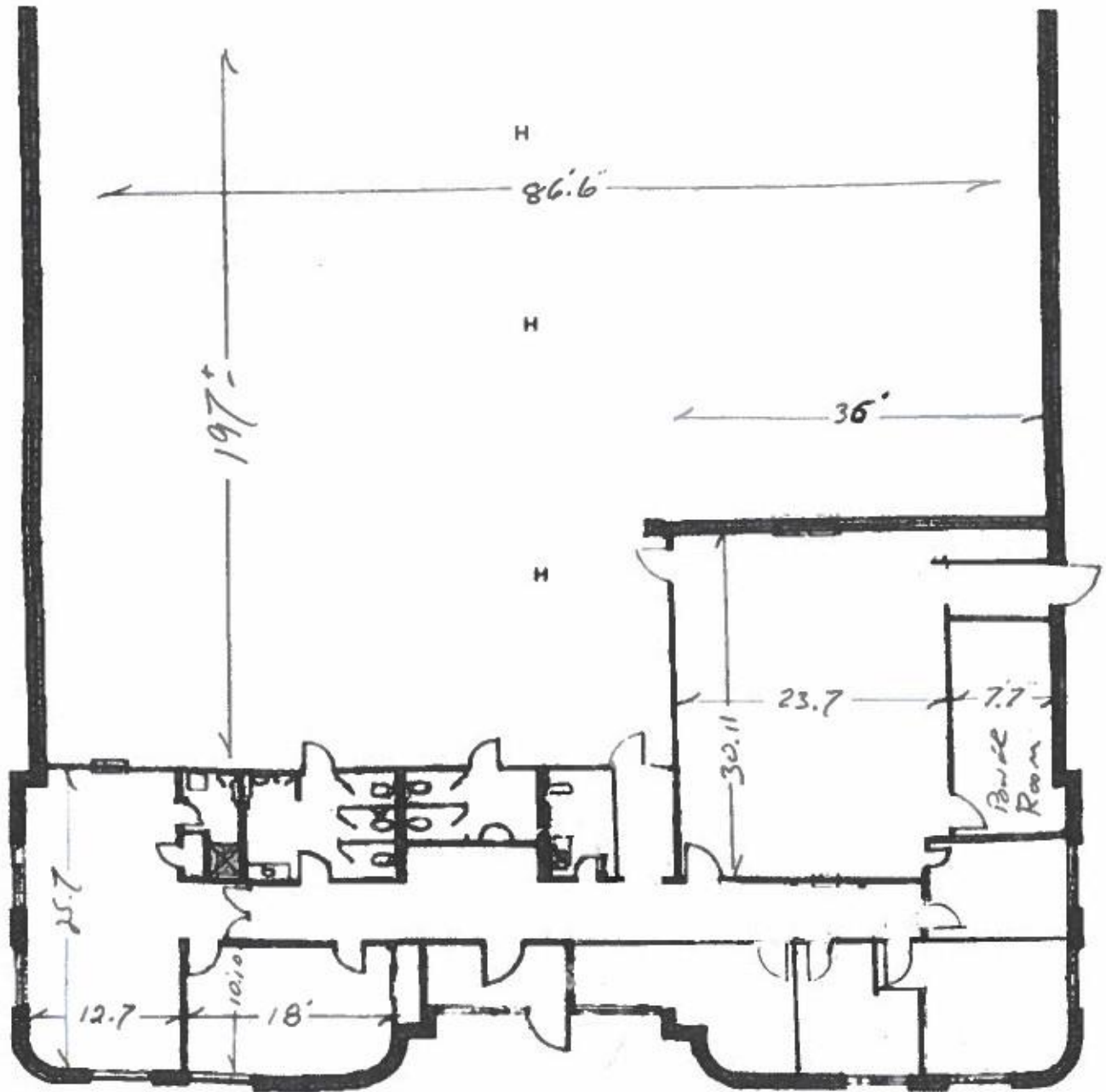
Office: 12% ±
Truck Docks: 2
Drive In: 2
Power: 400 Amps
Heat: Gas
Height: 17 ± feet
Sprinklers: 100%
Parking: Side & Rear



Nick Pizzardi

Director of Leasing
631 242-6300 office
516 480-4701 cell
631 242-2820 fax
NPizzardi@hrtld.com

**HEARTLAND
BUSINESS CENTER**
"BUILDING FOR INDUSTRY THE BETTER WAY"



**370 Oser Ave. Hauppauge
20,000 SF**

- Office: 12% ±
- Truck Docks: 2
- Drive In: 2
- Power: 400 Amps
- Heat: Gas
- Height: 17 ± feet
- Sprinklers: 100%
- Parking: Side & Rear

**HEARTLAND
BUSINESS CENTER**
"BUILDING FOR INDUSTRY THE BETTER WAY"

Nick Pizzardi
 Director of Leasing
 631 242-6300 office
 516 480-4701 cell
 631 242-2820 fax
NPizzardi@hrtld.com