

FOR LEASE

1700 - 1760 W. CAMERON AVE.
WEST COVINA, CA 91790



CAMERON
OFFICE PARK

1710

NEWMARK



CAMERON

OFFICE PARK



**SEVEN (7) BUILDING OFFICE
COMPLEX**



**INCLUDES A NEW TWO STORY
OFFICE BUILDING**



**ENTIRE PROJECT RECENTLY
REMODELED**



OFFICE/MEDICAL USES PERMITTED



**CLOSE PROXIMITY TO NUMEROUS
RETAIL AMENITIES & DOWNTOWN
WEST COVINA**

AVAILABILITY

PROJECT SUMMARY

Availability ±945 SF - ±2,493 SF

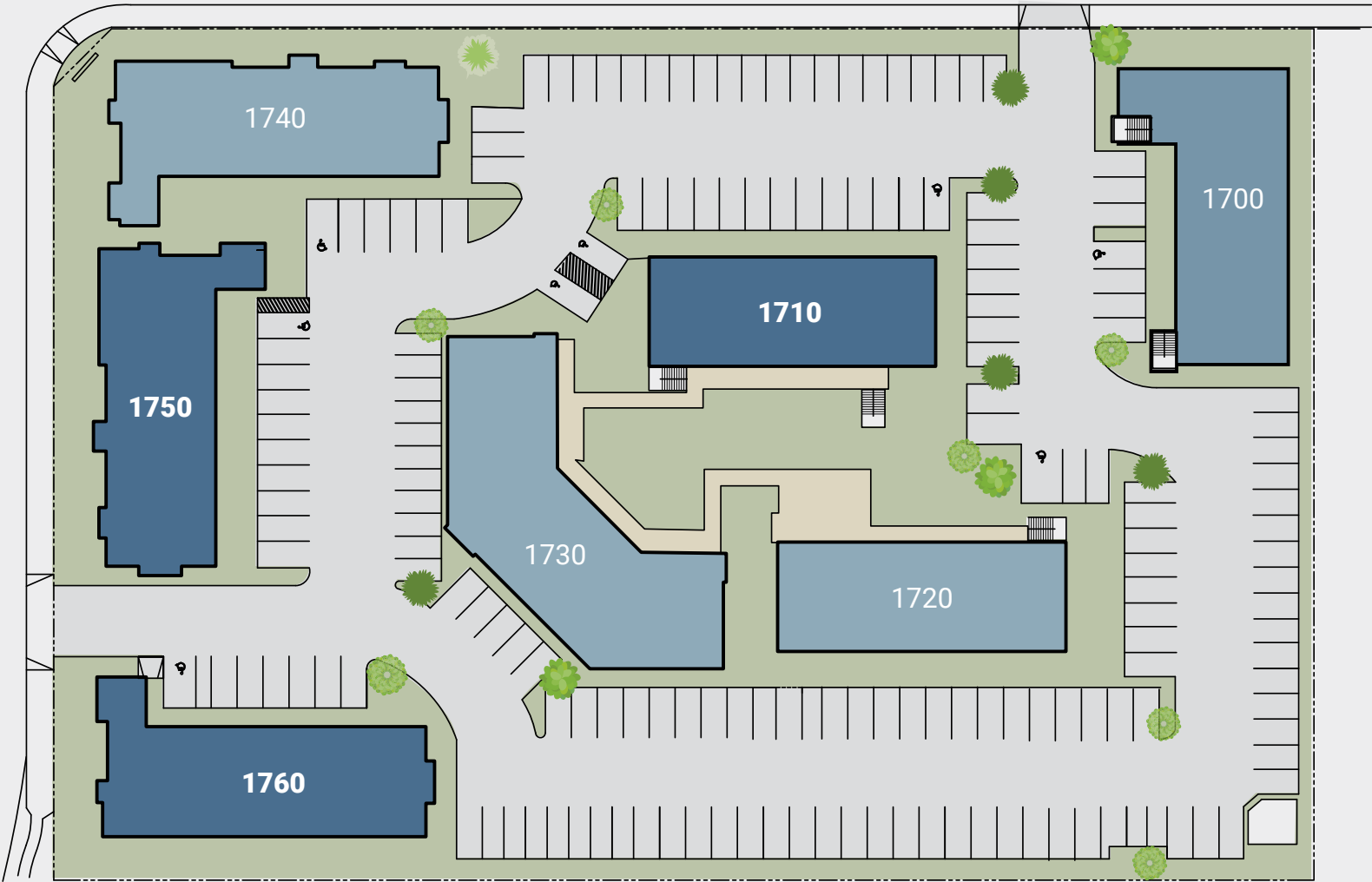
Lease Rate \$2.10 FSG

Parking Ratio ±4/1000

BUILDING	SUITE	SQ. FT.	AVAILABLE	VIDEO TOUR
1710 Cameron	200	±1,048 SF	30 DAYS	
1750 Cameron	102	±1,348 SF	VACANT	▶
1760 Cameron	103	±945 SF	VACANT	▶
1760 Cameron	104	±1,548 SF	VACANT	▶

Contiguous to
2,493 SF

SITE PLAN



CAMERON
OFFICE PARK

SAN BERNARDINO FWY



CITY HALL

W COVINA PKWY

S SUNSET AVE

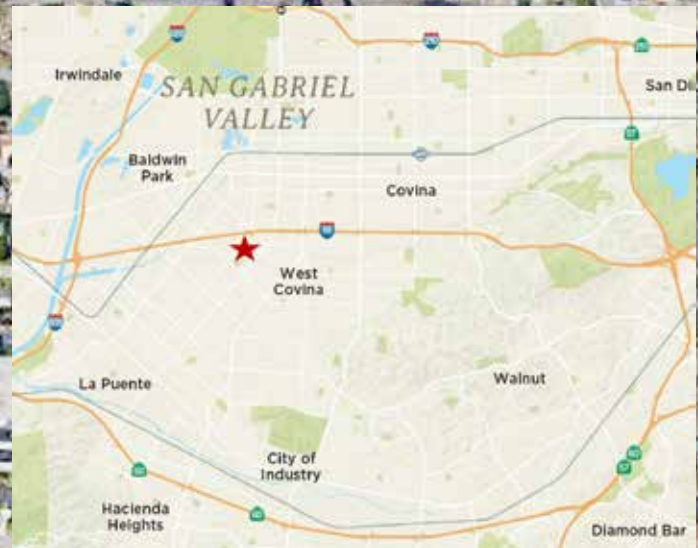
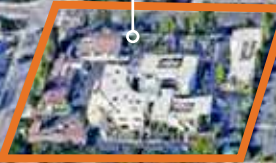
W COVINA PKWY

American Freight
APPLIANCES & FURNITURE

FLOOR DECOR

TOLUCA AVE

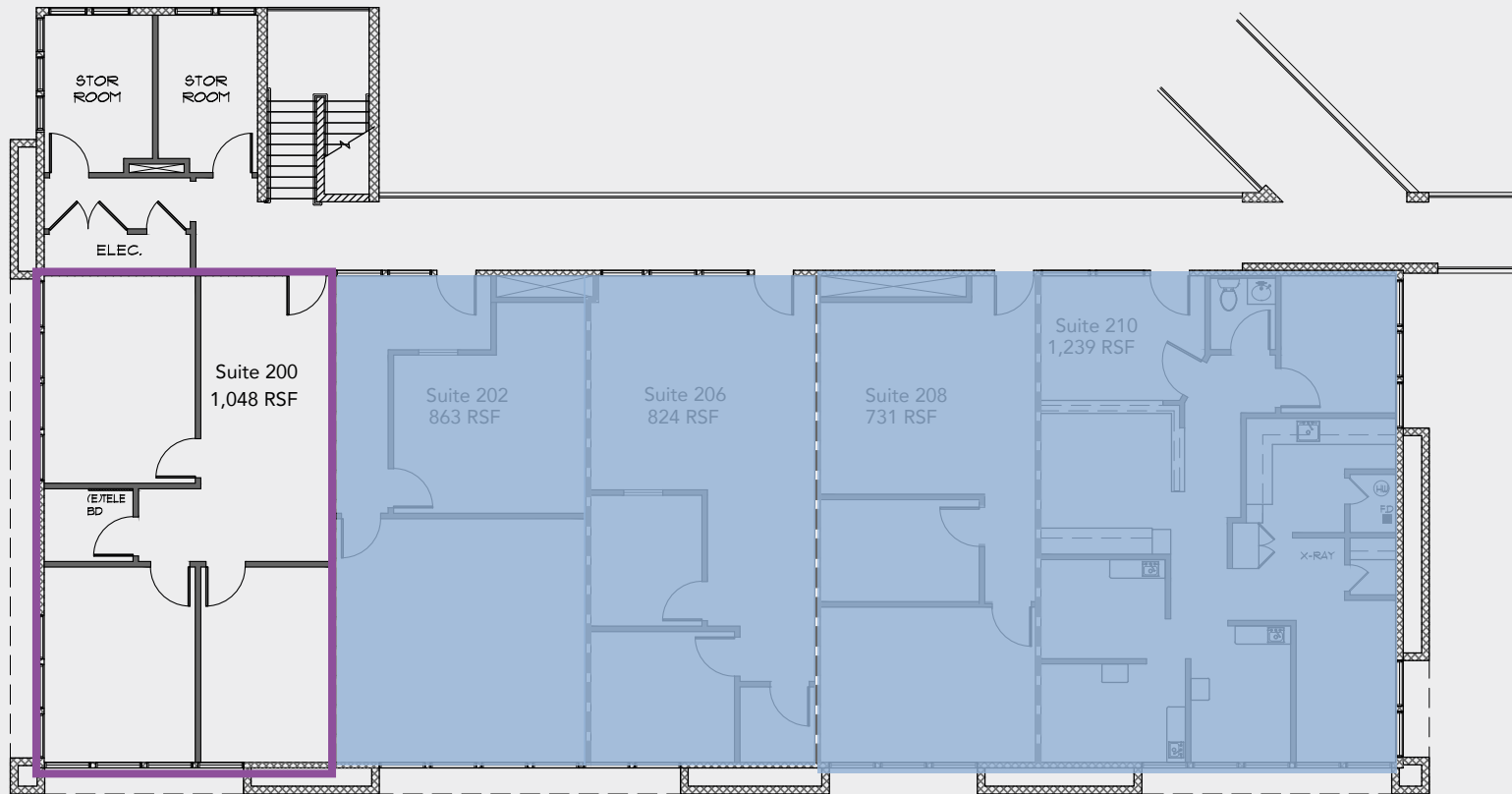
W CAMERON AVE



1710 W. CAMERON AVE.

Suite Square Feet


200 1,048 SF

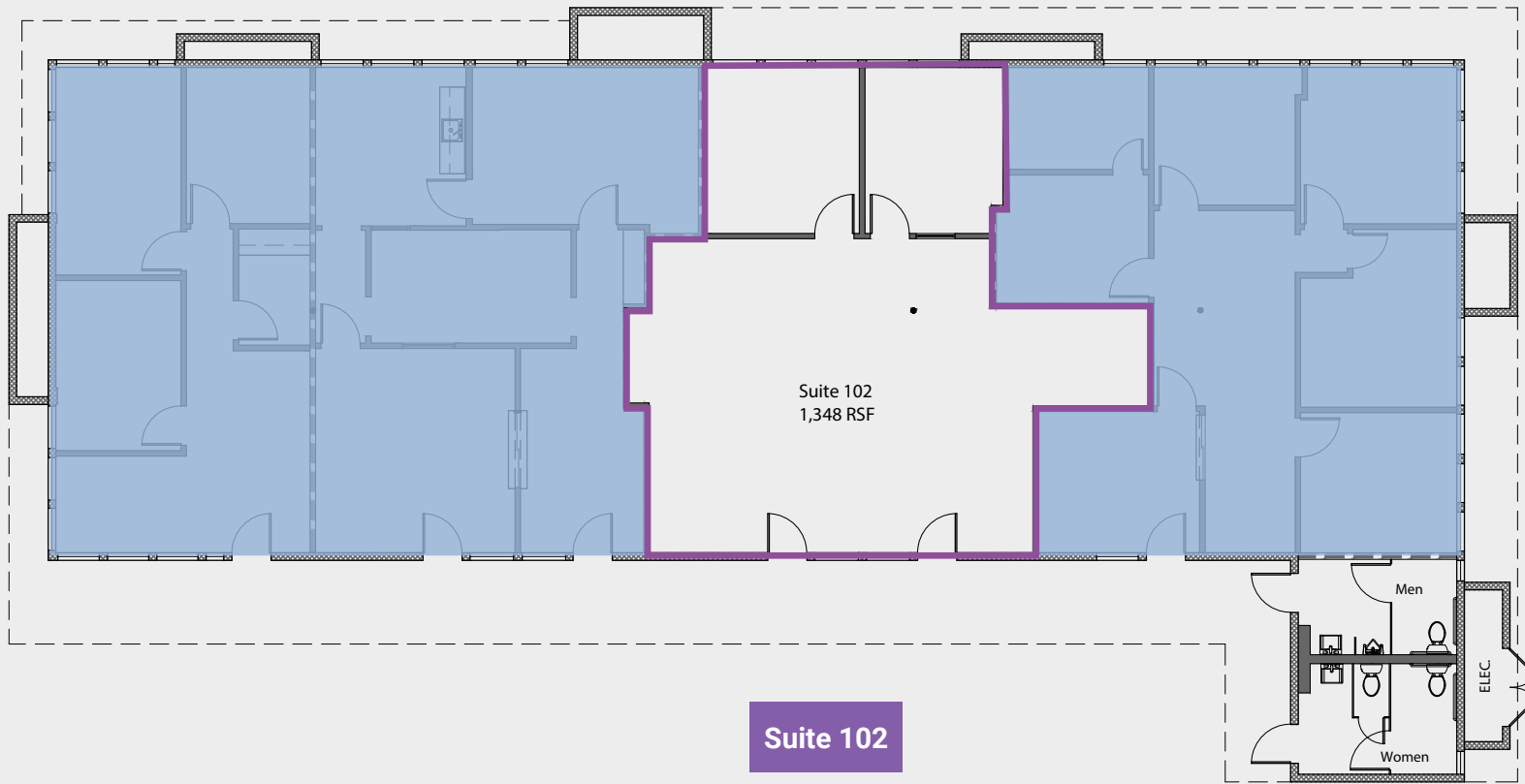


Suite 200

2ND FLOOR

1750 W. CAMERON AVE.

Suite	Square Feet	Video Tour
102	1,348 SF	

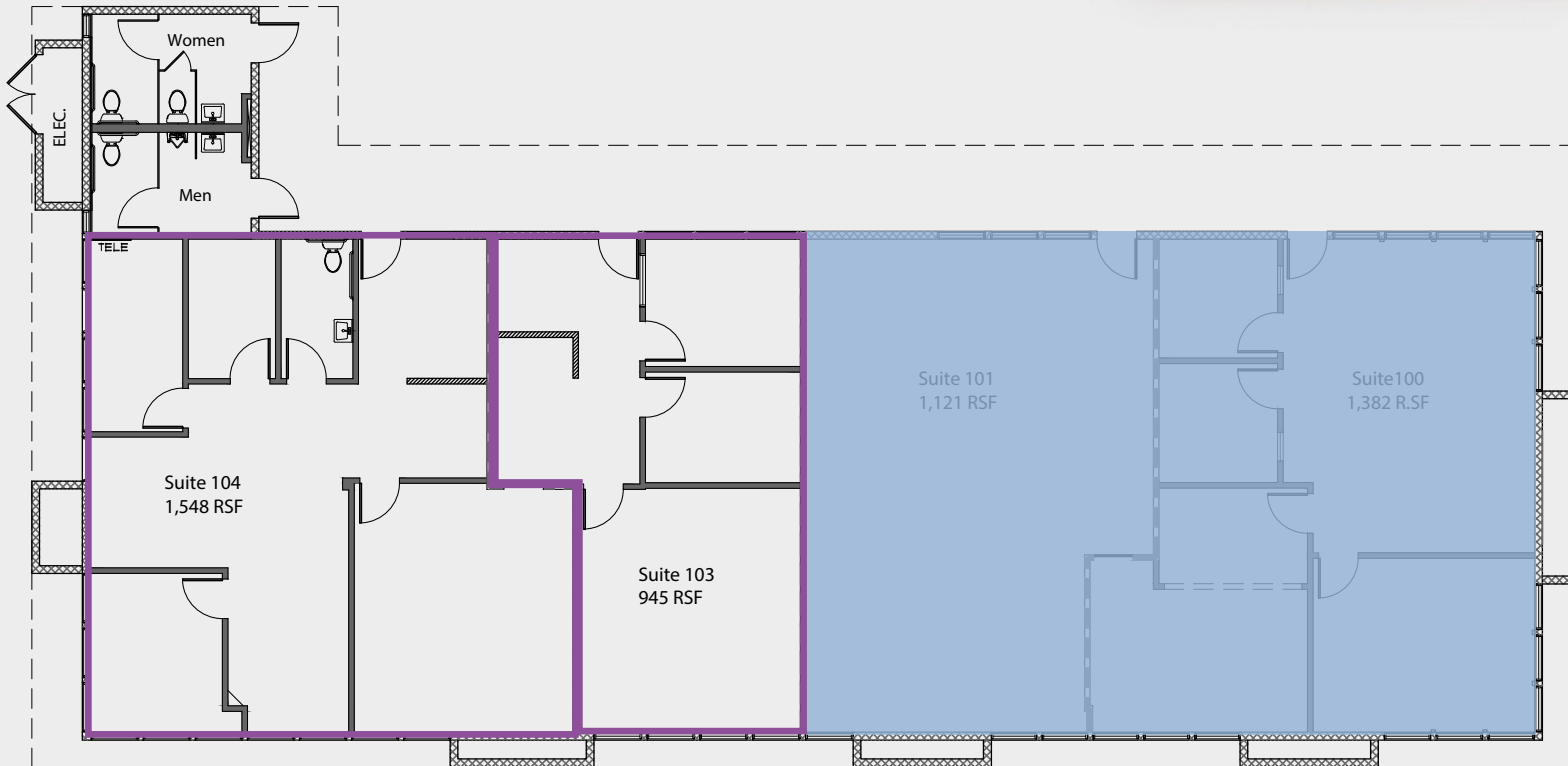


1ST FLOOR

1760 W. CAMERON AVE.



	Suite	Square Feet	Video Tour
Contiguous to 2,493 SF	103	945 SF	▶
	104	1,548 SF	▶



Suite 104

Suite 103

1ST FLOOR

TAYLOR ING

Senior Managing Director
t 714-271-9066
taylor.ing@nmrk.com
CA RE Lic. #00895164

RICHARD P. SUNG

Senior Managing Director
t 949-608-2178
richard.sung@nmrk.com
CA RE Lic. #01953211



CAMERON
OFFICE PARK



NEWMARK

Corporate License #01355491

The information contained herein has been obtained from sources deemed reliable but has not been verified and no guarantee, warranty or representation, either express or implied, is made with respect to such information. Terms of sale or lease and availability are subject to change or withdrawal without notice.