

# CLASS A OFFICES FOR LEASE

Suite 205 | 1,112 SF | \$2.25/SF/MO. NNN

Suite 210 | 444 SF | \$2.55/SF/MO. NNN



SUITE 205



SUITE 205



SUITE 210



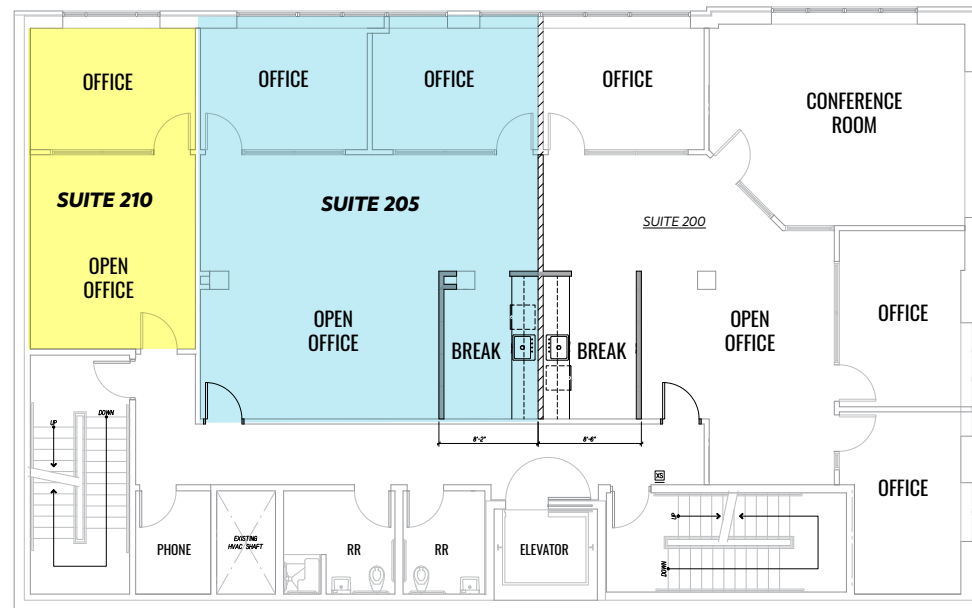
SUITE 210

**THE BOND BUILDING DOWNTOWN CLASS A OFFICE SUITES**  
1051 NW Bond Street, Bend, OR 97703

**COMPASS**   
**COMMERCIAL**   
**REAL ESTATE SERVICES**



# The BOND



## THE BOND BUILDING

### PROPERTY DETAILS

- Suite 205:** 1,112 SF | \$2.25/SF/Mo. NNN | Available Now  
Layout features two private offices, open office area, breakroom, with two common restrooms and shower
- Suite 210:** 444 SF | \$2.55/SF/Mo. NNN | Available 3/1/20206  
Layout features one office, open work space, with two common restrooms and shower
- CAMs:** Est. at \$0.99/SF/Mo.  
(Utilities included)

Brokers are licensed in the state of Oregon. This information has been furnished from sources we deem reliable, but for which we assume no liability. This is an exclusive listing. The information contained herein is given in confidence with the understanding that all negotiations pertaining to this property be handled through Compass Commercial Real Estate Services. All measurements are approximate.



**CLASS A OFFICE SPACE  
IN ONE OF DOWNTOWN'S  
PREMIER BUILDINGS**



**LARGE WINDOWS AND VIEWS  
LOOKING DOWN ON BOND ST  
AND GREENWOOD AVE**



**BEAUTIFULLY RENOVATED WITH  
HIGH-END FINISHES THROUGHOUT**



**PROMINENT CORNER  
SIGNAGE AVAILABLE**



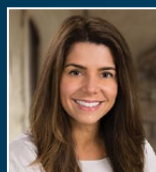
**HIGH VISIBILITY LOCATION  
AT MAIN TRAFFIC SIGNAL  
IN DOWNTOWN**



**CLOSE PROXIMITY TO THE  
COURTHOUSE, RESTAURANTS,  
SHOPS AND BANKS**



**Graham Dent, SIOR**  
Partner, Broker  
Cell 541.639.6515  
gdent@compasscommercial.com



**Kristie Schmitt, CCIM**  
Broker  
Cell 541.527.5515  
kschmitt@compasscommercial.com

**COMPASS**  
COMMERCIAL

**REAL  
ESTATE  
SERVICES**