

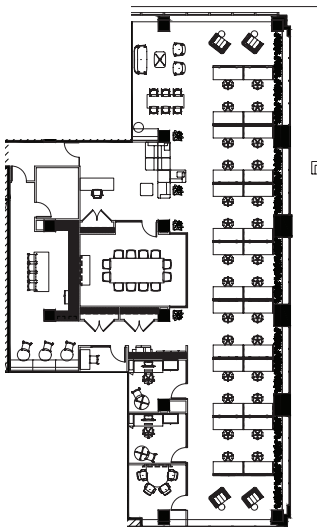


200 SOUTH
MICHIGAN



Two proposed
spec suites will be
available late 2020





Suite 1350 – 5,381 RSF

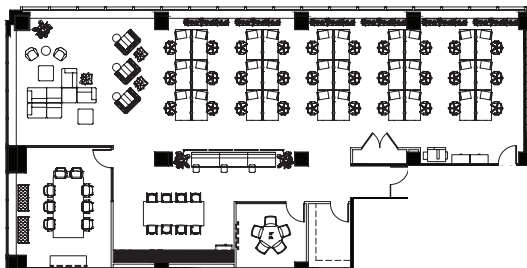
Open plan

Tons of natural light

Western exposure

Modern creative finishes

[DOWNLOAD PLAN](#)



Suite 1450 – 4,005 RSF

Modern creative finishes

Open plan

Western exposure, lots of light

Park views

[DOWNLOAD PLAN](#)

TENANT LOUNGE



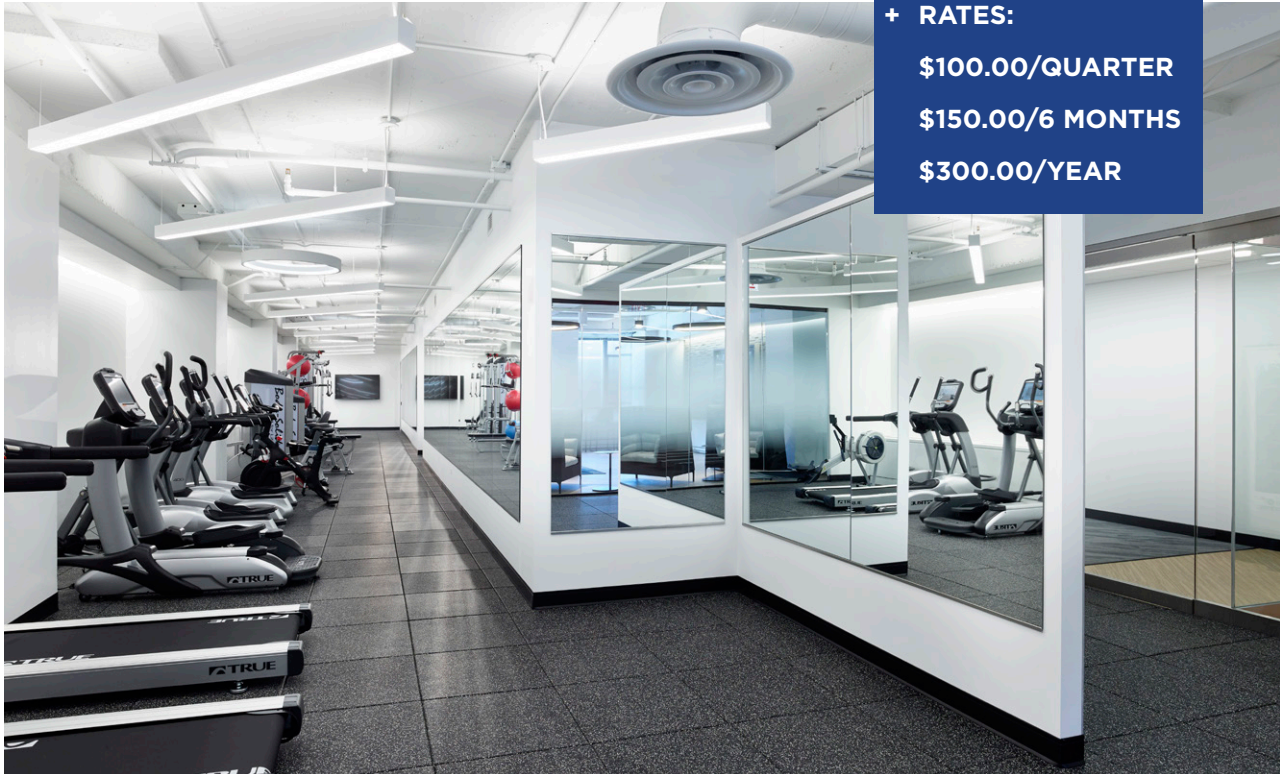
FITNESS CENTER

+ RATES:

\$100.00/QUARTER

\$150.00/6 MONTHS

\$300.00/YEAR



+ THE TENANT LOUNGE AND
FITNESS CENTER ARE LOCATED
ON THE 3RD FLOOR



CLIFF DWELLERS



In 1907, Chicago author Hamlin Garland and friends founded the Attic Club, which two years later was re-named The Cliff Dwellers. Now, as then, it is a private club and functions as a non-profit organization for men and women either professionally engaged in, or who support, the fine arts and the performing arts.



ADDITIONAL BUILDING FEATURES

- + Executive Parking
- + Starbucks, Potbelly's
- + Across the street from the Art Institute of Chicago
- + Steps away from Millennium and Grant Parks
- + Close proximity to public transit
- + Top dining options within close distance

Craig Coupe
(312) 228-3772



Chris Cassata
(312) 228 3754