

# AXIS 360

COMMERCIAL REAL ESTATE

3001½ Gill St.  
Suite A  
Bloomington, Illinois

[www.axis360.co](http://www.axis360.co)



## FOR SALE - Industrial/Warehouse Opportunity!

### Address

Quincy St, Towanda IL

### Asking Price

\$950,000

### Building Size

Approx. 36,000 Sq. Ft.

### Parcel

Part of 15-05-357-005

### Zoning

C-1

### Built

1987

### Lot Size

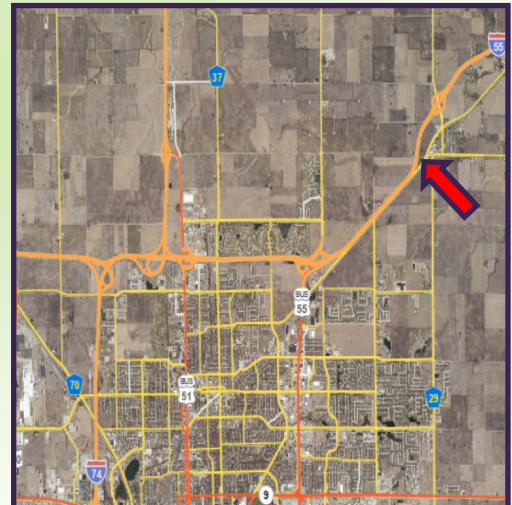
1.49 +/- Acres

Approx. 36,000 Sq. Ft. of dry warehouse space just minutes from the I-55 Towanda exchange. Building has been separately parceled with a new tax id to be assigned.

The property is located on septic and Village of Towanda water.

A small, climate controlled office and restroom will be considered at the asking price.

- Located in the Bloomington-Normal metro market, just 10 minutes from Rivian's warehouse and 15 minutes from the Rivian Automotive Manufacturing facility
- 13' x 25' newly installed overhead door (power)
- 23' column spacing
- 480V, 200 amp electrical service to be installed



**Laura Pritts**  
Designated Managing Broker  
[lptritts@axis360.co](mailto:lptritts@axis360.co)  
(309) 824-0507

Visit our Website:  
[www.axis360.co](http://www.axis360.co)





3001½ Gill St.  
Suite A  
Bloomington, Illinois

[www.axis360.co](http://www.axis360.co)

Visit our Website:



Laura Pritts, Designated Managing Broker

[lptritts@axis360.co](mailto:lptritts@axis360.co)

(309) 824-0507

