

2002 BLOOMINGDALE RD

Glendale Heights, IL 60139

Industrial For Lease

16,962 SF



Leasing Information:
847.490.5350

Matthew Hickey **Brett Ratay**
312.345.8782 847.490.5350
mhickey@lpc.com bratay@lpc.com

Lincoln

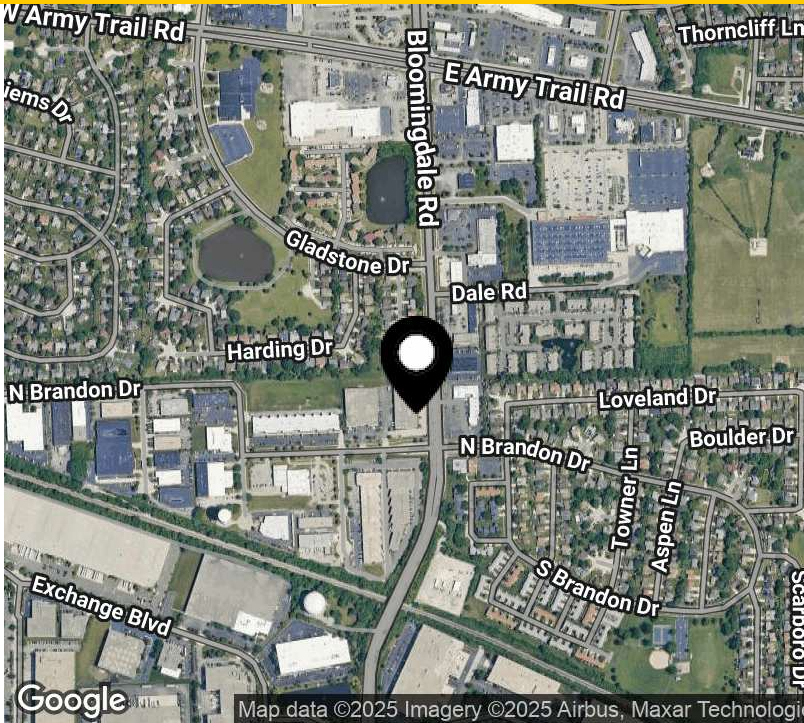
Lincoln Property Company
120 North LaSalle Street Suite 2900
Chicago, IL 60602

www.lpc.com

2002 BLOOMINGDALE RD

Glendale Heights, IL 60139

Industrial For Lease



Property Highlights

- 16,962 SF (+/- 3,880 SF office)
- 2 interior docks, 1 drive-in door
- 21' ceiling height
- 400 amp power
- LED lights in warehouse
- Building signage along Bloomingdale Road
- Immediate access to I-355 via Army Trail Road
- Institutionally owned & professionally managed
- Low DuPage County taxes

Property Overview

Well maintained industrial facility with LED lights in the warehouse, well appointed office space, and two interior truck docks. Immediate access to I-355 and low DuPage County taxes.

Availabilities	SF	Lease Rate	Date Available
Suite 2002	16,962 SF	Negotiable	Available Now

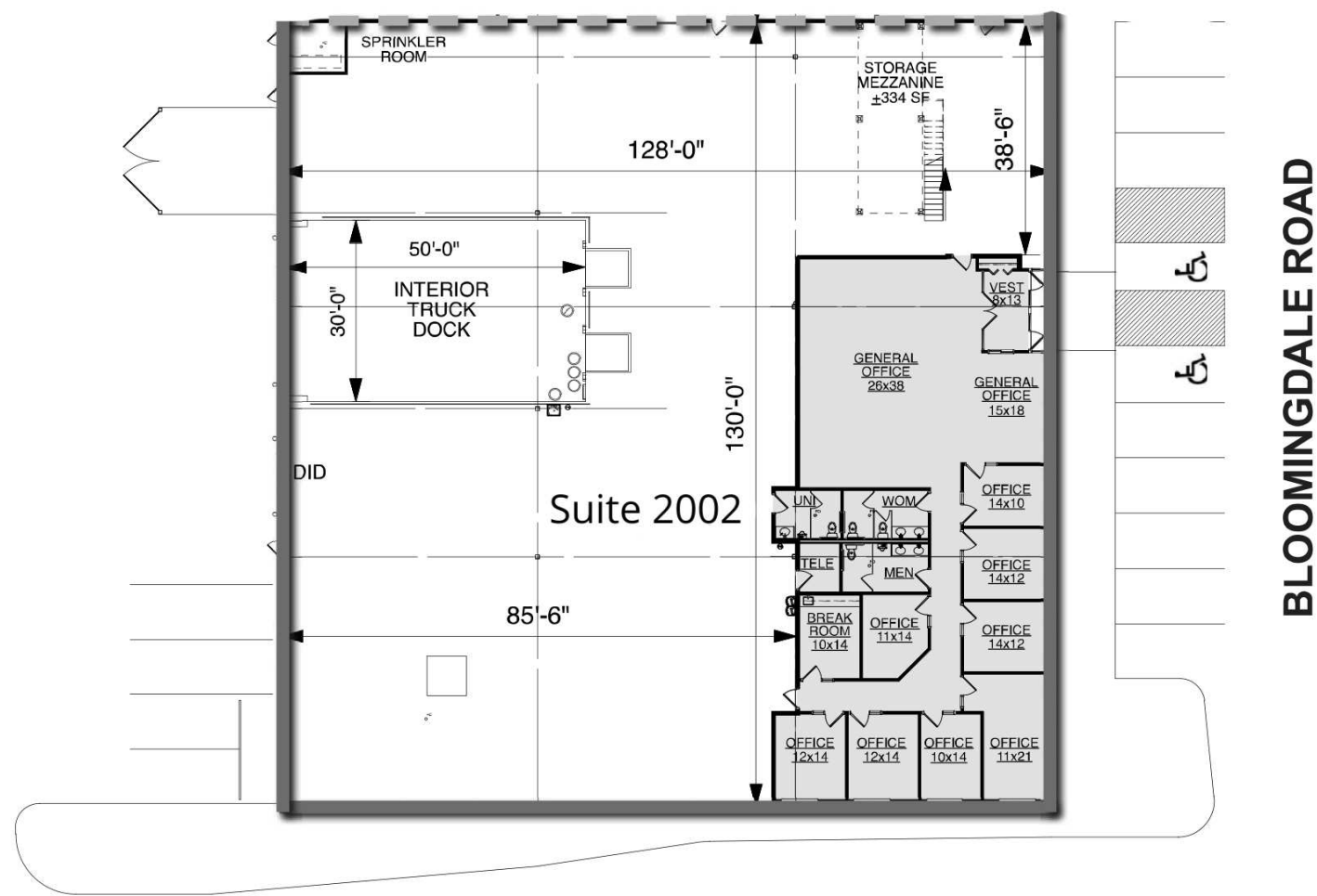
Matthew Hickey **Brett Ratay**
312.345.8782 847.490.5350
mhickey@lpc.com bratay@lpc.com

Lincoln

2002 BLOOMINGDALE RD

Glendale Heights, IL 60139

Suite 2002
16,962 SF



Suite	Size	Lease Rate	Description
■ Suite 2002	16,962 SF	Negotiable	2 interior docks, 1 drive-in door 16,962 SF (+/- 3,880 SF Office) Immediate occupancy 21' ceiling height 400 amp power

Matthew Hickey Brett Ratay
312.345.8782 847.490.5350
mhickey@lpc.com bratay@lpc.com

Lincoln



2002 BLOOMINGDALE RD

Glendale Heights, IL 60139

Leasing Information:
847.490.5350

Matthew Hickey
312.345.8782
mhickey@lpc.com

Brett Ratay
847.490.5350
bratay@lpc.com

Lincoln

Lincoln Property Company
120 North LaSalle Street Suite 2900
Chicago, IL 60602

www.lpc.com