

28315 Woodlawn Drive

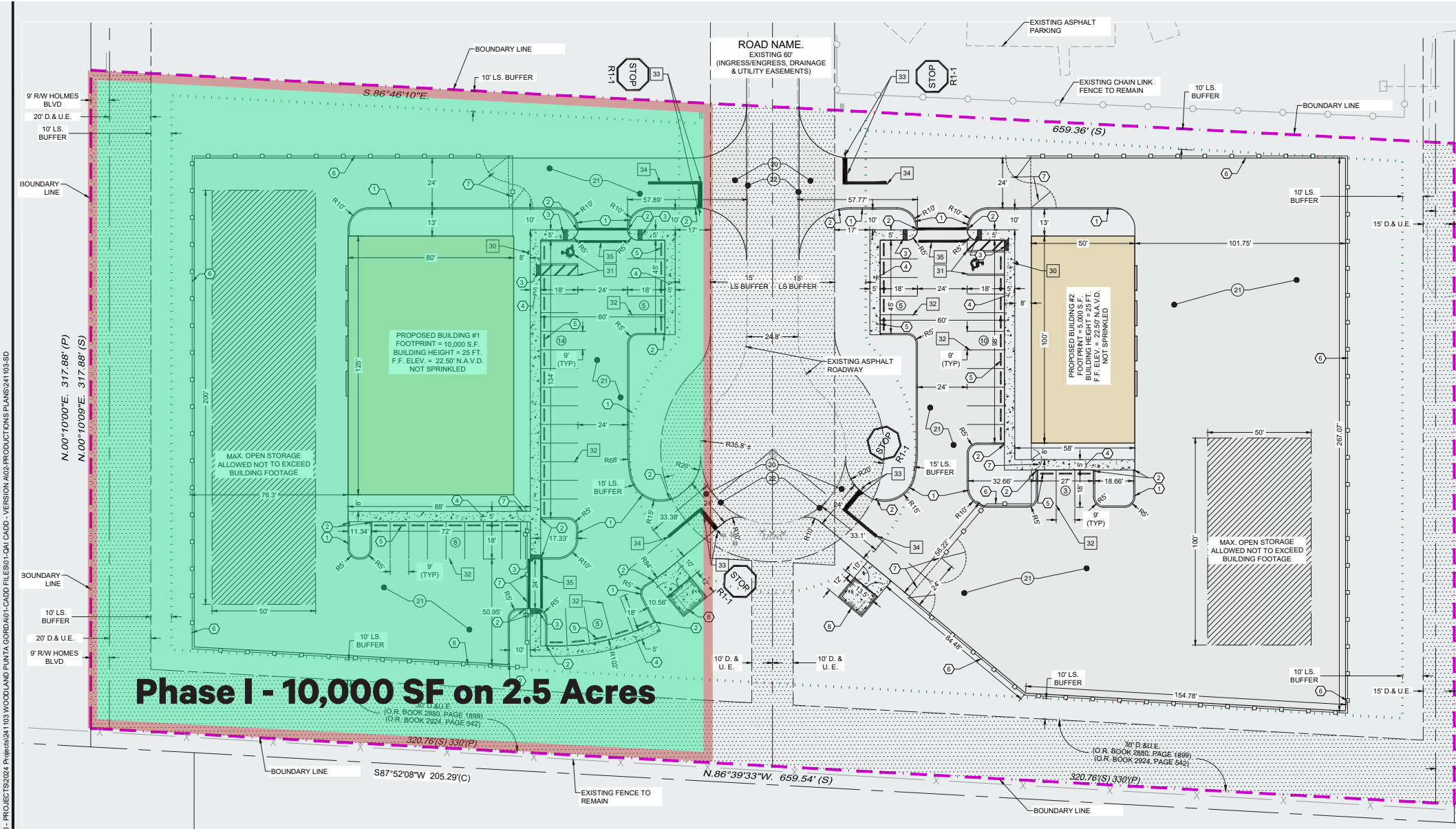
Punta Gorda, FL

PHASE I - 10,000 SF ON 2.5 ACRES - Q1' 2026 DELIVERY



Building I - 10,000 SF
FACILITY

Property Highlights



\$20,000

Monthly NNN Rate

\$3,400

Monthly Operating Expenses

10,00 SF

Warehouse Space

1,036 SF

Office Space

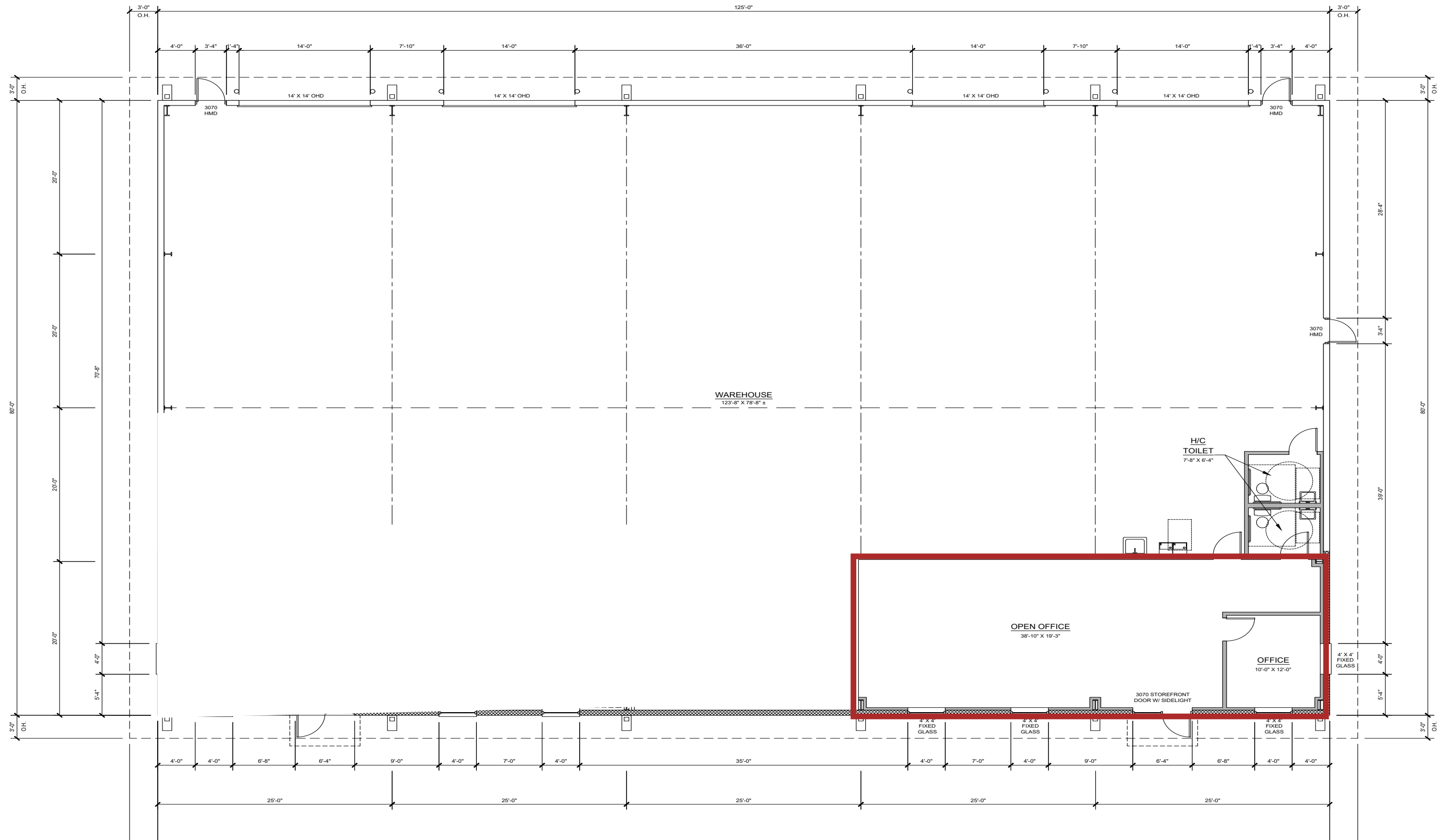
2.5 Acres

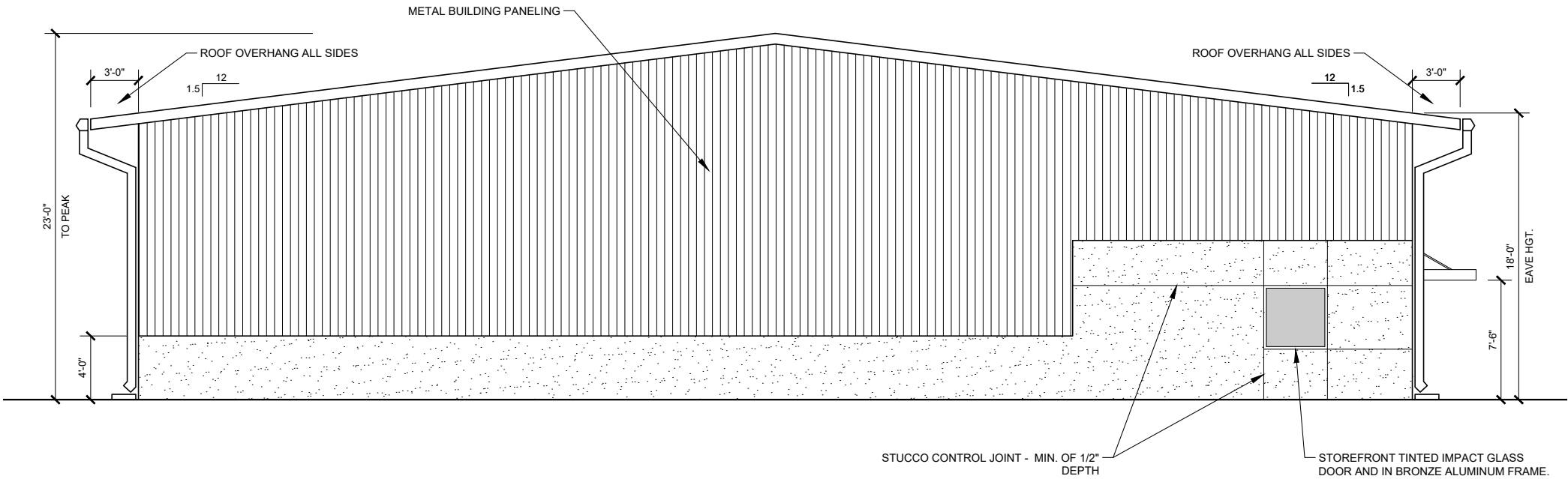
- + Phase I - 10,000 SF on 2.5 Acres
- + Q'1 2026 Delivery
- + Zoning Flexibility: ECAP Zoning
- + Prime Location - Easy access to major highways and the Punta Gorda Airport

Property Information	
Building Dimensions	125'x80'
Clear Span	Yes
Clear Height	18' & Up to 24' in Center
Overhead Doors	4 - 14'x'14' Grade Level Doors
Power	3 Phase 600 Amp
Secure Fenced Property	Yes
Parking Spots	32



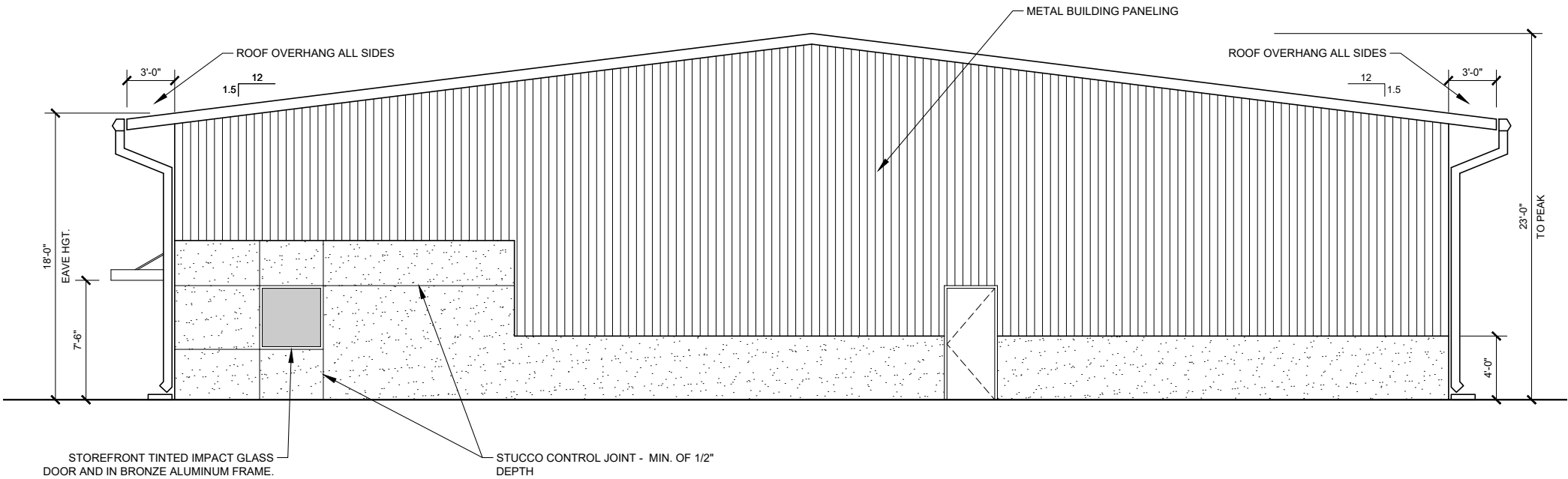
1,036 SF OFFICE SPACE





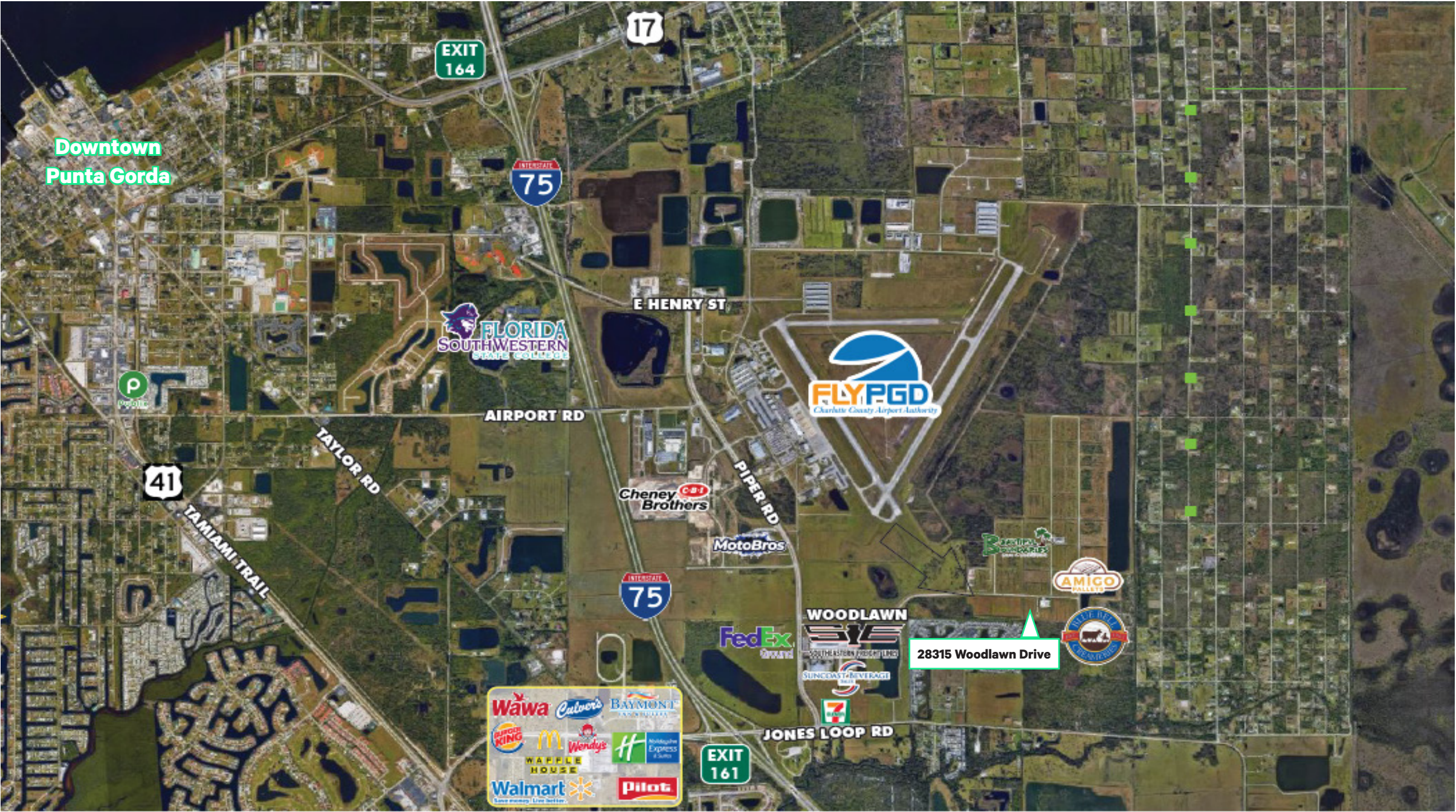
BUILDING 1 - LEFT (SOUTH) ELEVATION

SCALE: 3/16" = 1'-0"



BUILDING 1 - RIGHT (NORTH) ELEVATION

SCALE: 3/16" = 1'-0"



Contact Us

Derek Bornhorst, SIOR, CCIM
Senior Vice President
+1 239 898 7987
derek.bornhorst@cbre.com

Adam Bornhorst, SIOR
Vice President
+1 239 789 6537
adam.bornhorst@cbre.com