

CLASS A OFFICE SPACE FOR LEASE

CLICK TO VIEW
VIDEO TOUR



1201
K STREET
SACRAMENTO

DAN CHAMBERLAIN

916.569.2382

dan.chamberlain@nmrk.com

CA RE License#00832933

NEWMARK

ONE OF DOWNTOWN'S MOST DISTINGUISHED BUILDINGS



- On-site Management & Ownership
- Legislative Audio/Video Feed
- FedEx on the ground floor
- Showers/Lockers On-site
- High Quality Restaurant in the Lobby
- On-Site Security & Covered Parking
- On-Site Car charging Stations
- One Block to the State Capitol Building
- Immediate Access to Light Rail, Regional Transit Trolley, Hotels, Banking, Shopping, etc.
- On-Site Common Tenant Conference Room

AVAILABILITIES

Suite #	Size (RSF)
1000	±4,947
11th Floor	±18,367 (Divisible)
1220	±4,585
1225 Sublease	±2,472
1620	±5,932
17th Floor	±17,931 (Divisible)
1930 Sublease	±2,310





1201

K STREET
SACRAMENTO

EXCELLENT VIEWS

The building offers outstanding window lines with great views of the valley, downtown area and the State Capitol building.



JUST COMPLETED!

SAFE CREDIT UNION CONVENTION CENTER & PERFORMING ARTS CENTER

Renovations and expansion to the Convention Center have just been completed. The project objectives included maximizing the Convention Center space, improving event flexibility, and improving the guest experience by improving the circulation through and around the building.

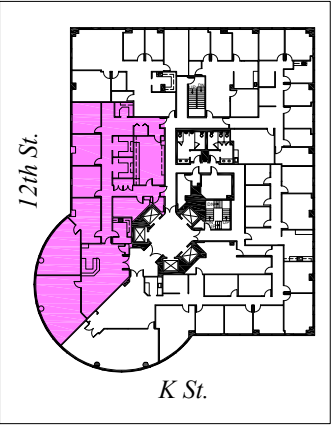
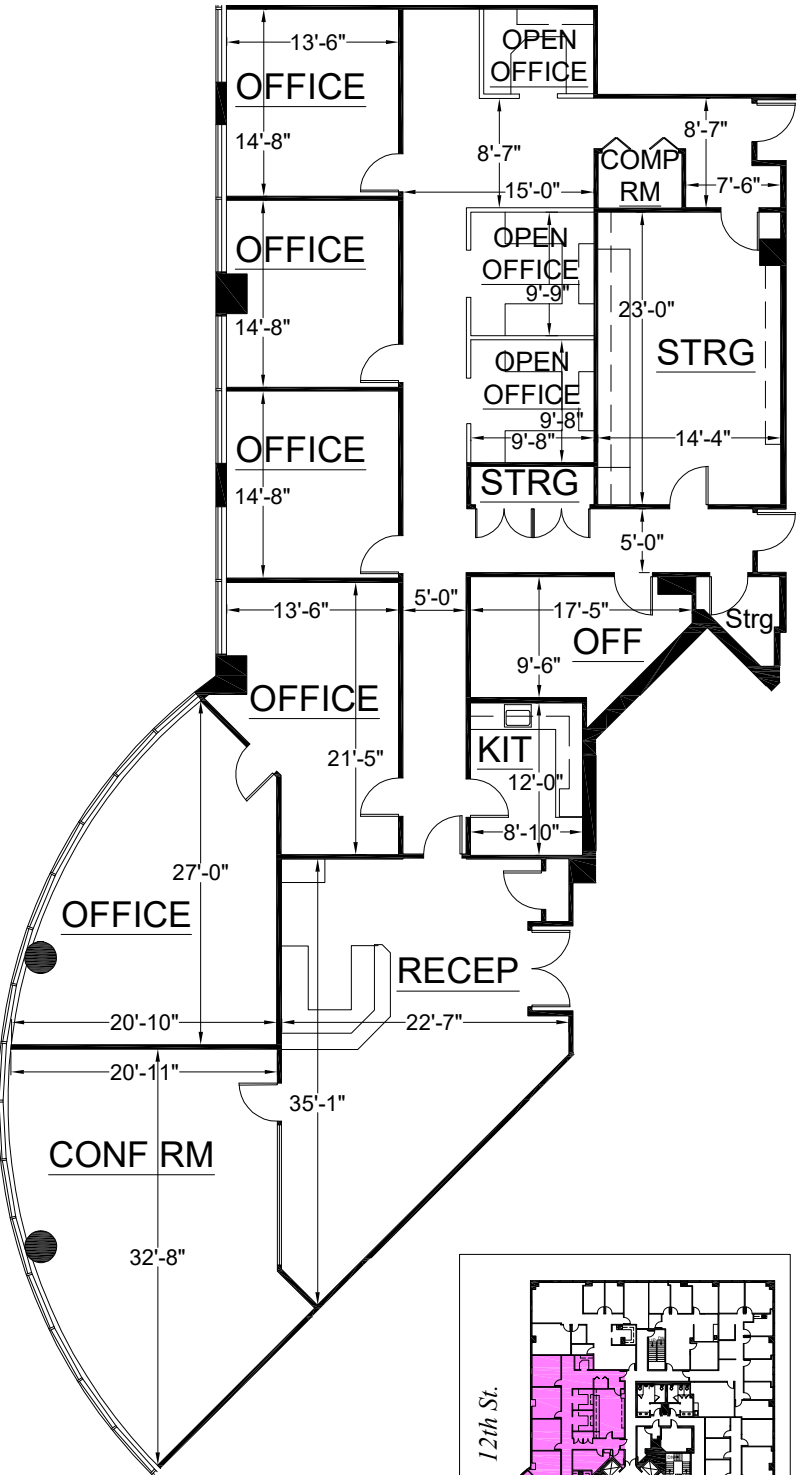
The project includes a significant expansion of the exhibit hall space, new lobbies on the east and west side of the building, an expanded kitchen, and retail space, the addition of new east and west meeting space, as well as a new 40,000 square foot ballroom. Additionally, a new activities plaza was created between the two buildings on K Street. The project is LEED Silver Certified.

The Performing Arts Center began construction in June of 2019 and is now complete. The Performing Arts Center underwent a renovation and expansion which updates the performing arts venue, as well as an expansion, which includes creating a prominent main entrance along L Street. Additional improvements to the Performing Arts Center include:

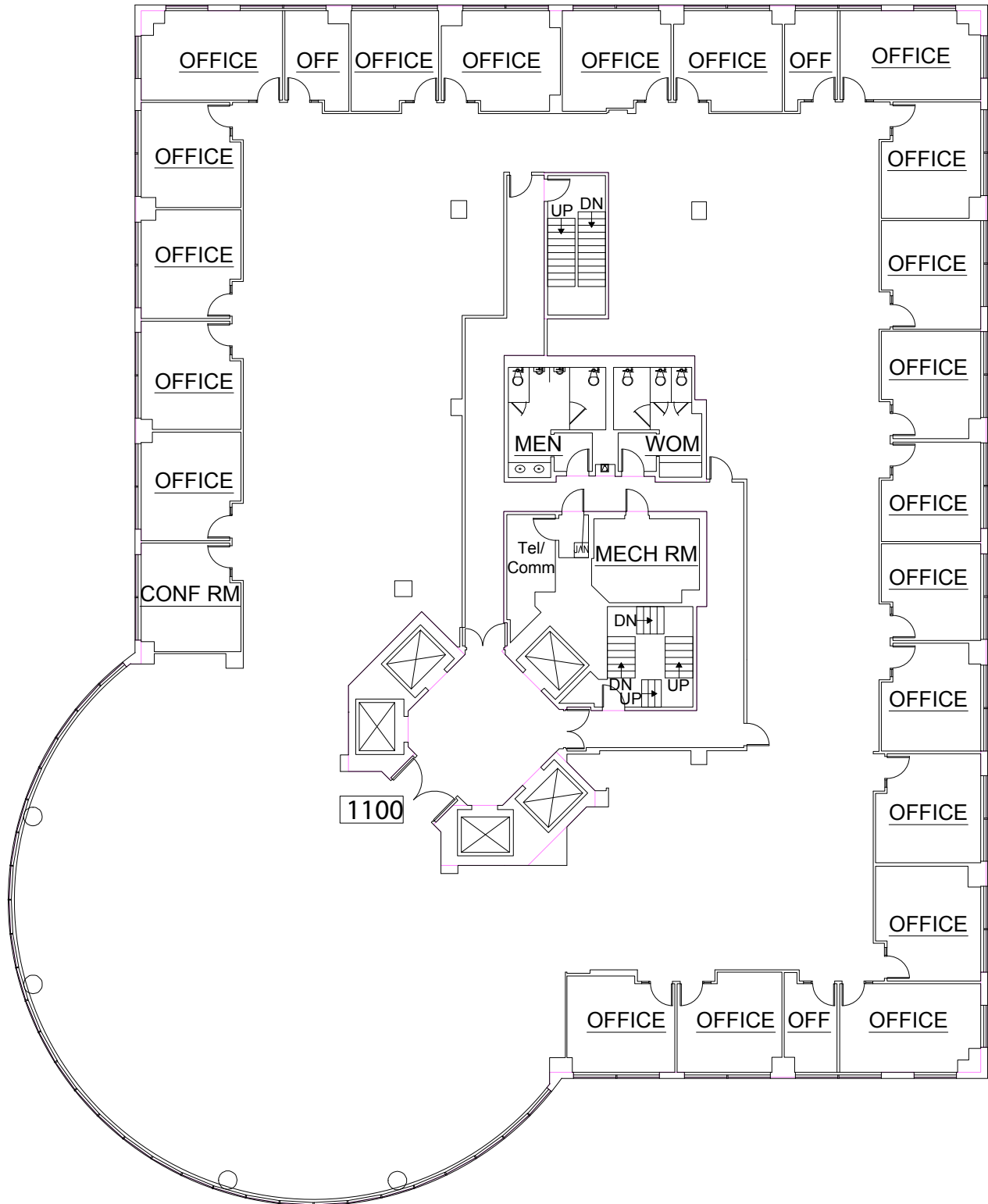
- Improved Accessibility (ADA)
- New L Street Entry with Expanded Lobby and Upgraded Finishes
- Additional Restrooms and Concessions Areas
- Enhanced Donor Lounge with Dedicated Restrooms
- New Audience Chamber Layout
- New Multi-Purpose Room
- New AV, Theatrical Lighting and Dimming Systems
- Expanded and Refurbished Dressing Room and Chorus Room
- Reconfigured and Expanded Loading Dock, Scene Dock and Storage Rooms
- Acoustic Enhancements in Audience Chamber and Orchestra Pit



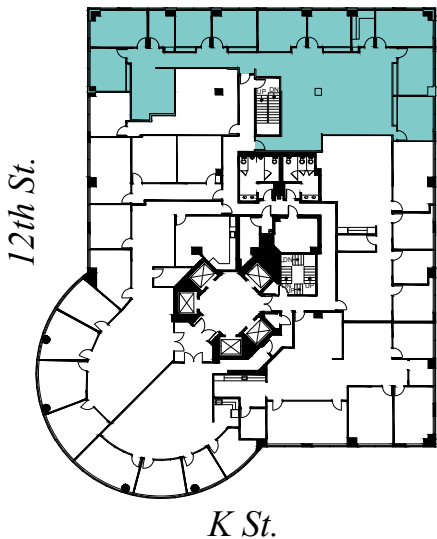
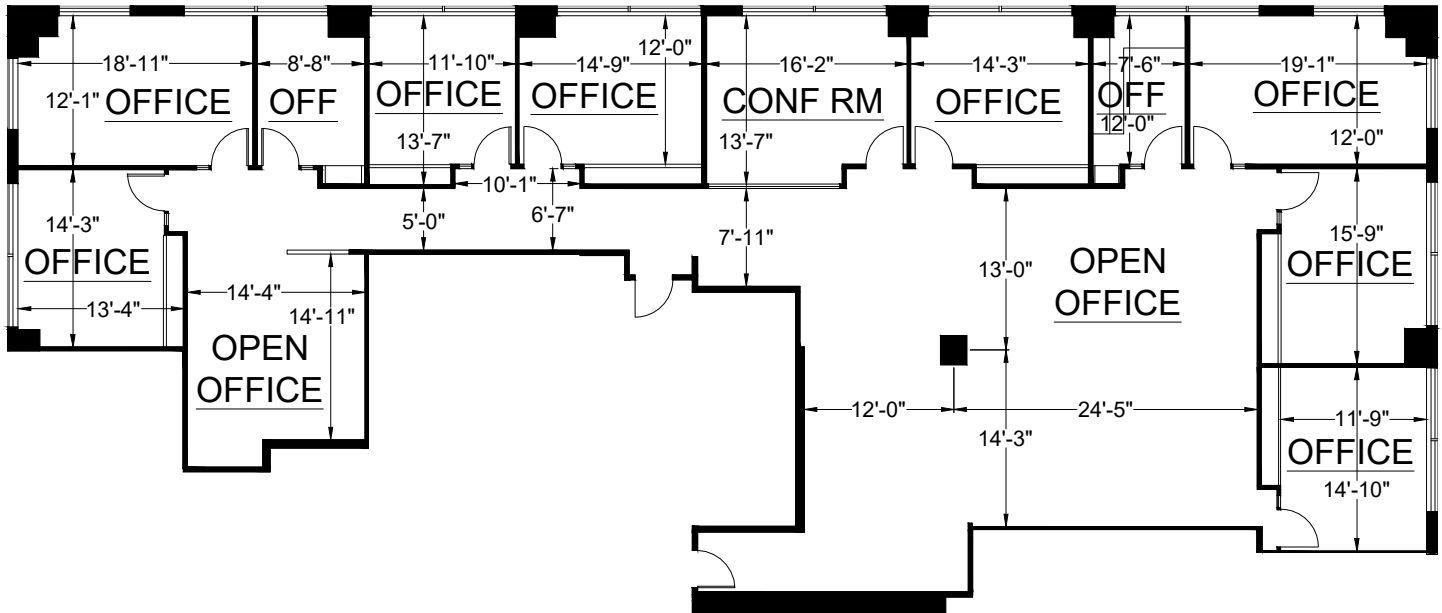
FLOOR PLAN /SUITE 1000: ±4,947 SF



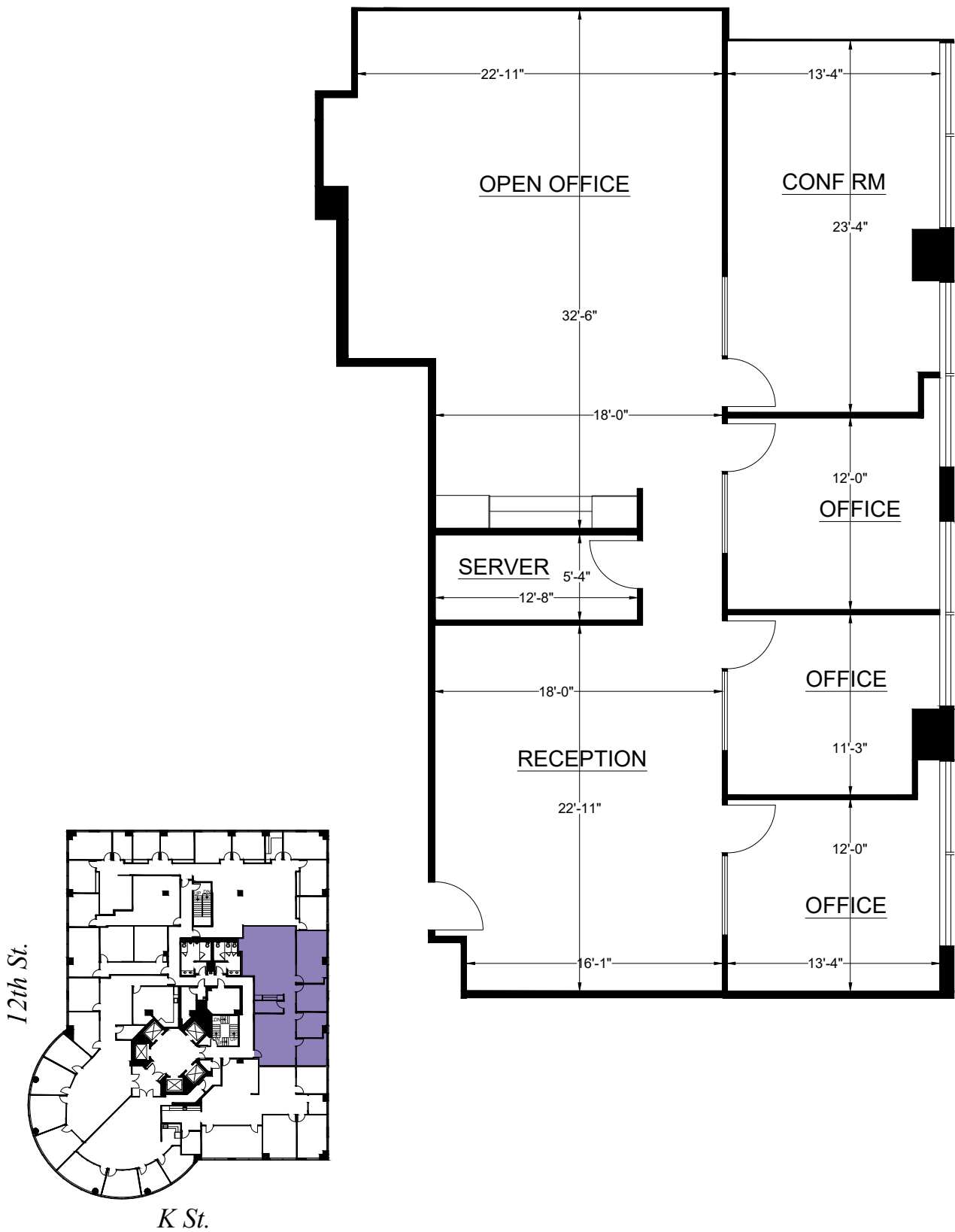
FLOOR PLAN / 11TH FLOOR: ±18,367 SF (DIVISIBLE)



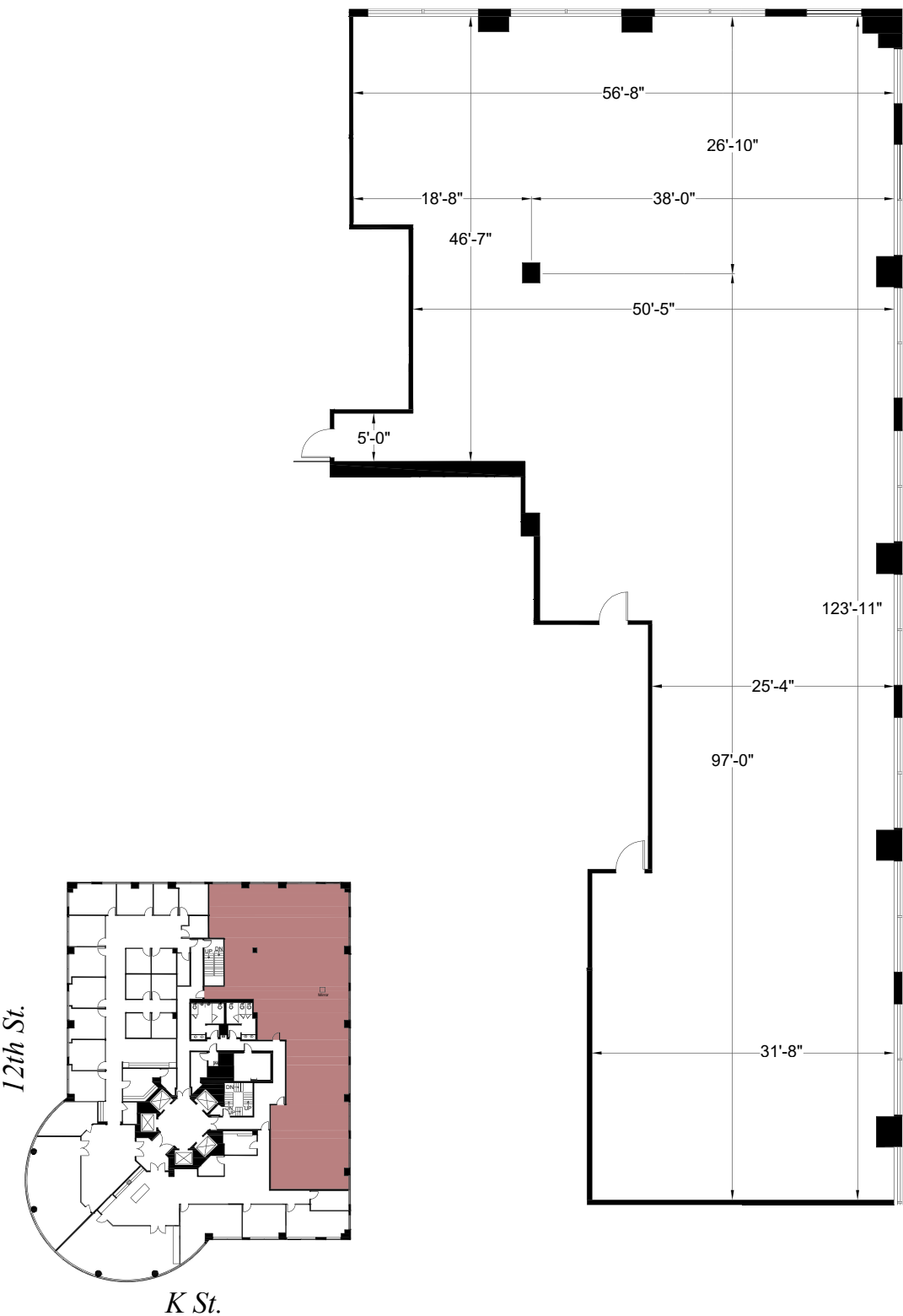
FLOOR PLAN /SUITE 1220: ±4,585 SF



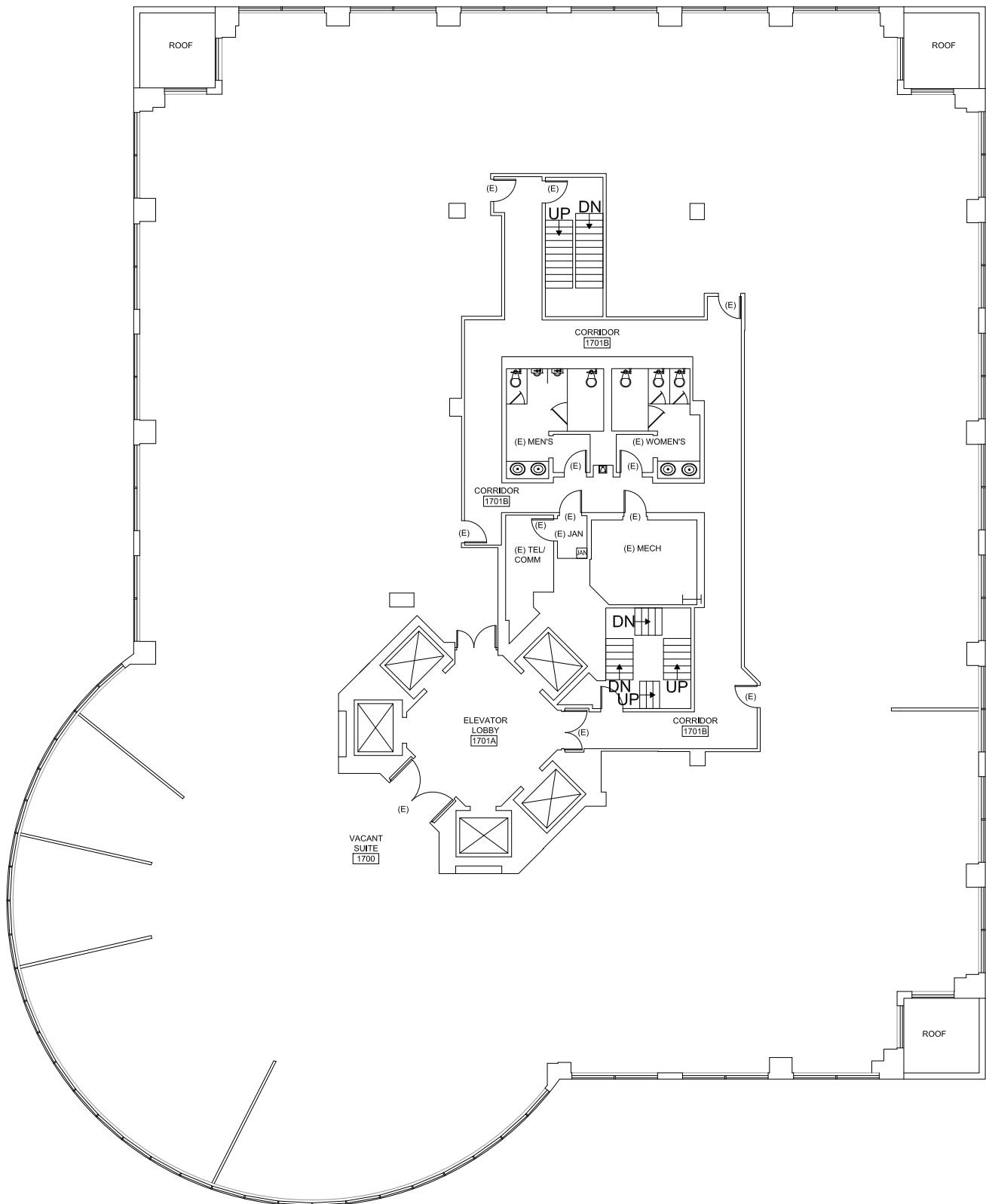
FLOOR PLAN /SUITE 1225: ±2,472 SF - SUBLEASE



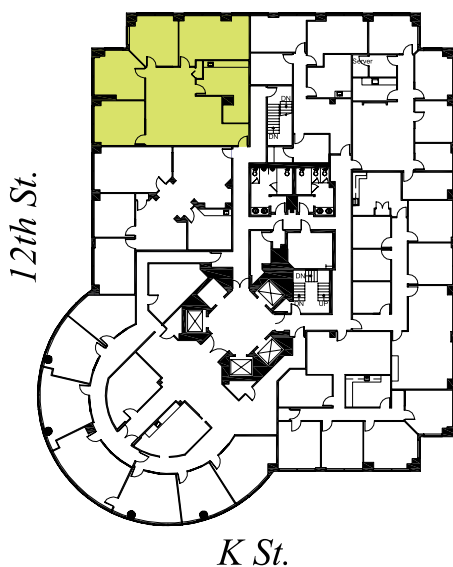
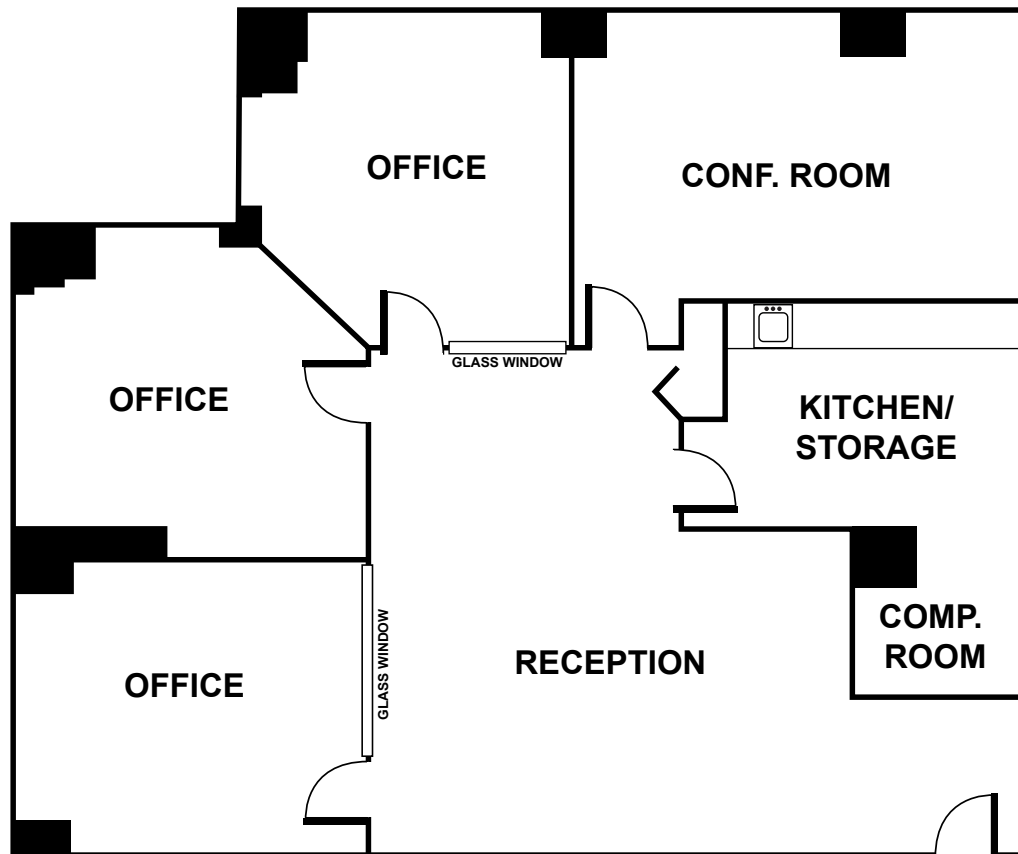
FLOOR PLAN /SUITE 1620: ±5,932 SF



FLOOR PLAN / 17TH FLOOR: ±17,931 SF (DIVISIBLE)



FLOOR PLAN /SUITE 1930: ±2,310 SF - SUBLEASE





IN THE CENTER OF THE DOWNTOWN/MIDTOWN LIVE/ WORK/ PLAY ENTERTAINMENT DISTRICT



The distributor of this communication is performing acts for which a real estate license is required. The information contained herein has been obtained from sources deemed reliable but has not been verified and no guarantee, warranty or representation, either express or implied, is made with respect to such information. Terms of sale or lease and availability are subject to change or withdrawal without notice. 8031620104.12/25

NEWMARK

DAN CHAMBERLAIN

916.569.2382

dan.chamberlain@nmrk.com

CA RE License#00832933