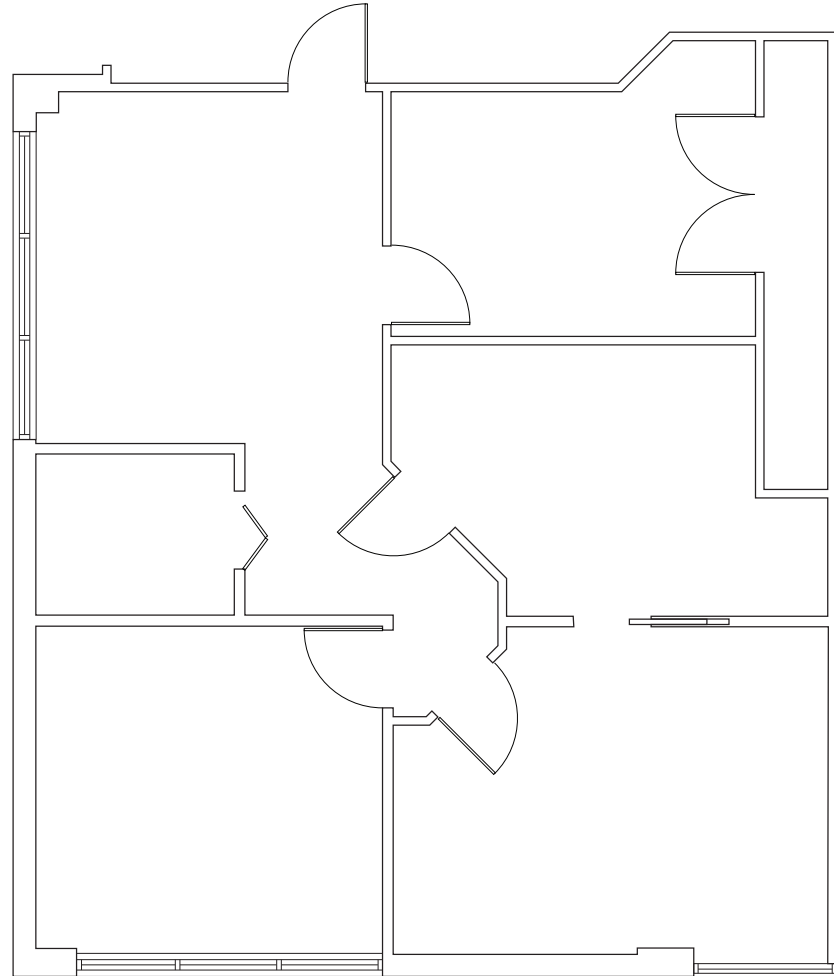


DEL MAR MEDICAL OFFICE

7301 & 7301 A W. Palmetto Park Road
Boca Raton, FL

FLOOR PLAN

| | |
|----------|----------------------------------|
| BUILDING | 7301A |
| SUITE | 301C |
| SIZE | 1,224 SF |
| RATE | \$32/SF/NNN + \$14.02/SF OPEX |



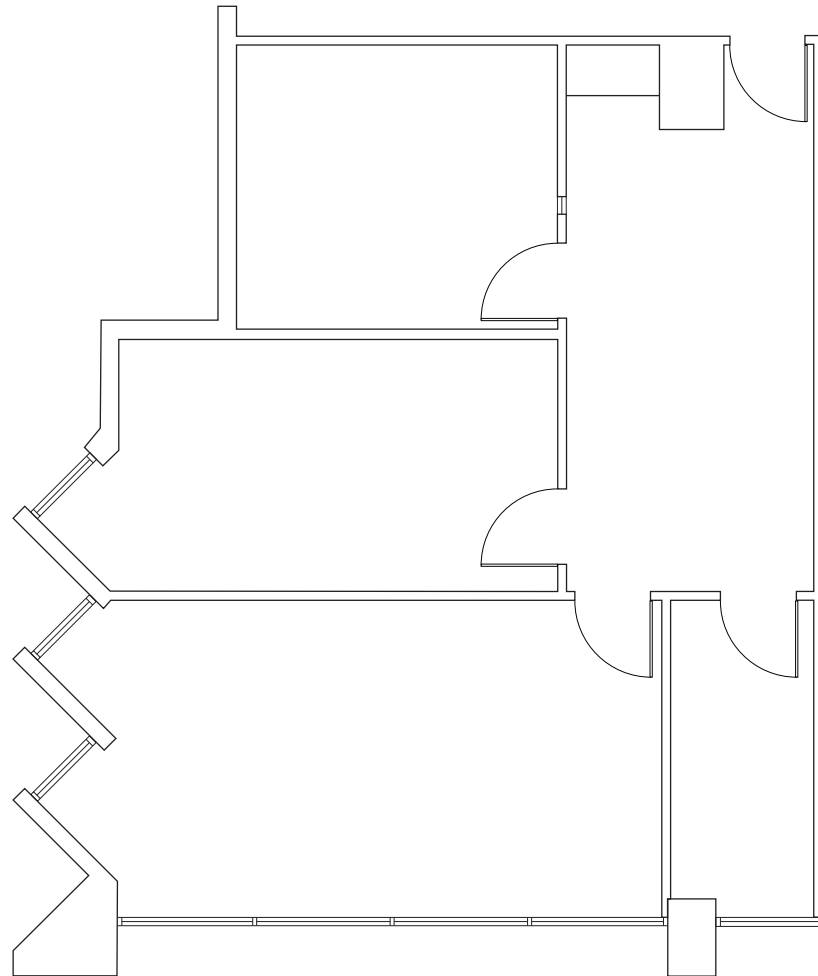
MICHAEL FELDMAN
Senior Director
Florida Healthcare Advisory Practice
+1 561 227 2063
michael.feldman@cushwake.com

DEL MAR MEDICAL OFFICE

7301 & 7301 A W. Palmetto Park Road
Boca Raton, FL

FLOOR PLAN

| | |
|----------|----------------------------------|
| BUILDING | 7301A |
| SUITE | 206A |
| SIZE | 1,133 SF |
| RATE | \$32/SF/NNN + \$14.02/SF OPEX |



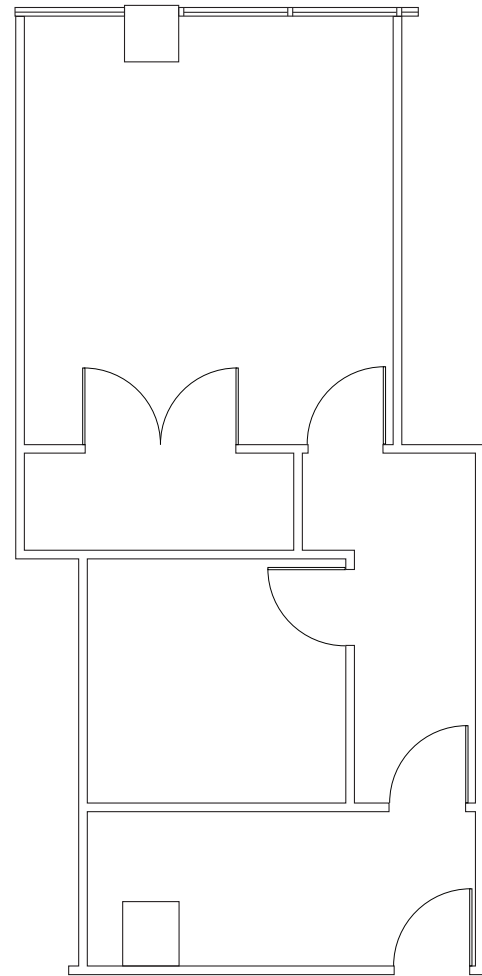
MICHAEL FELDMAN
Senior Director
Florida Healthcare Advisory Practice
+1 561 227 2063
michael.feldman@cushwake.com

DEL MAR MEDICAL OFFICE

7301 & 7301 A W. Palmetto Park Road
Boca Raton, FL

FLOOR PLAN

| | |
|----------|----------------------------------|
| BUILDING | 7301 |
| SUITE | 208B |
| SIZE | 714 SF |
| RATE | \$32/SF/NNN + \$14.02/SF OPEX |



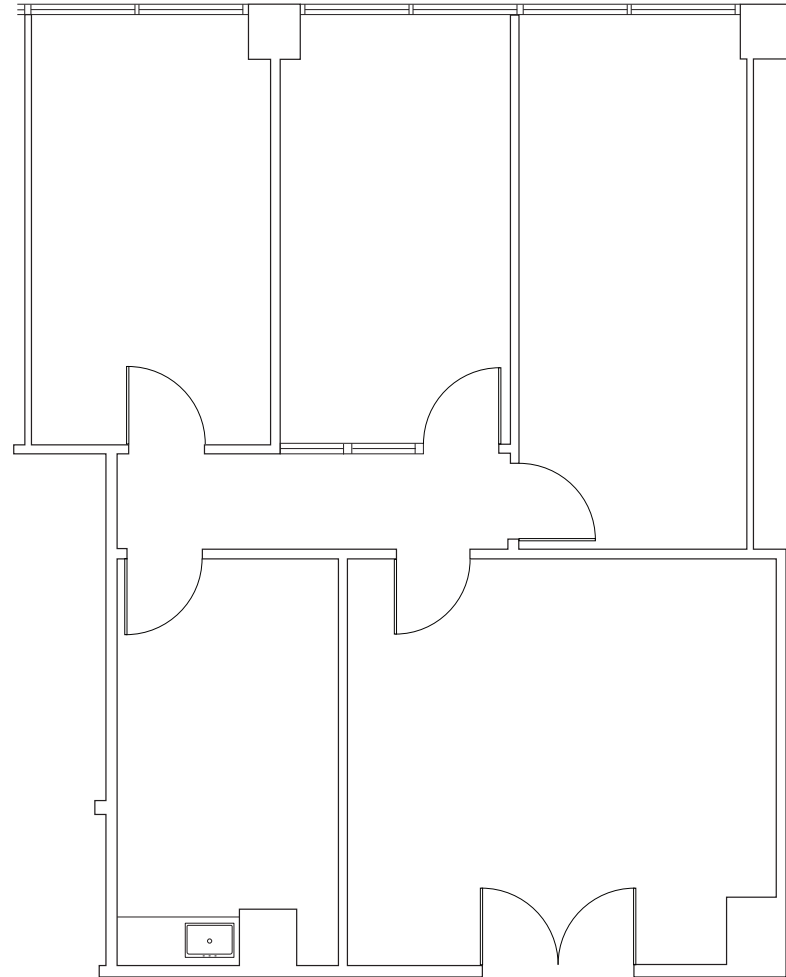
MICHAEL FELDMAN
Senior Director
Florida Healthcare Advisory Practice
+1 561 227 2063
michael.feldman@cushwake.com

DEL MAR MEDICAL OFFICE

7301 & 7301 A W. Palmetto Park Road
Boca Raton, FL

FLOOR PLAN

| | |
|----------|----------------------------------|
| BUILDING | 7301 |
| SUITE | 212B |
| SIZE | 1,246 SF |
| RATE | \$32/SF/NNN + \$14.02/SF OPEX |



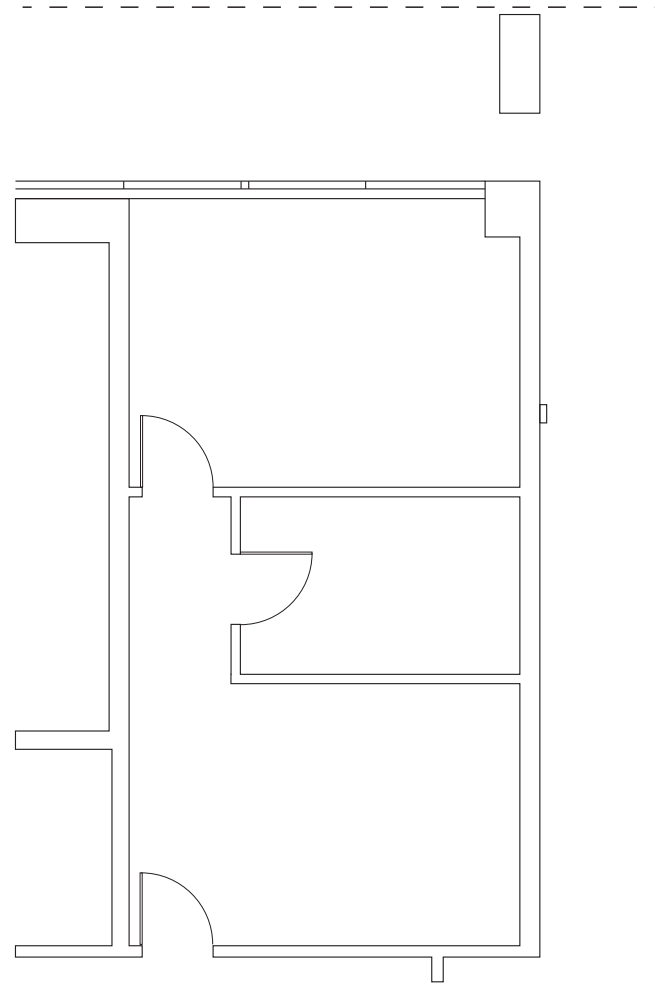
MICHAEL FELDMAN
Senior Director
Florida Healthcare Advisory Practice
+1 561 227 2063
michael.feldman@cushwake.com

DEL MAR MEDICAL OFFICE

7301 & 7301 A W. Palmetto Park Road
Boca Raton, FL

FLOOR PLAN

| | |
|----------|----------------------------------|
| BUILDING | 7301 |
| SUITE | 110C |
| SIZE | 575 SF |
| RATE | \$32/SF/NNN + \$14.02/SF OPEX |



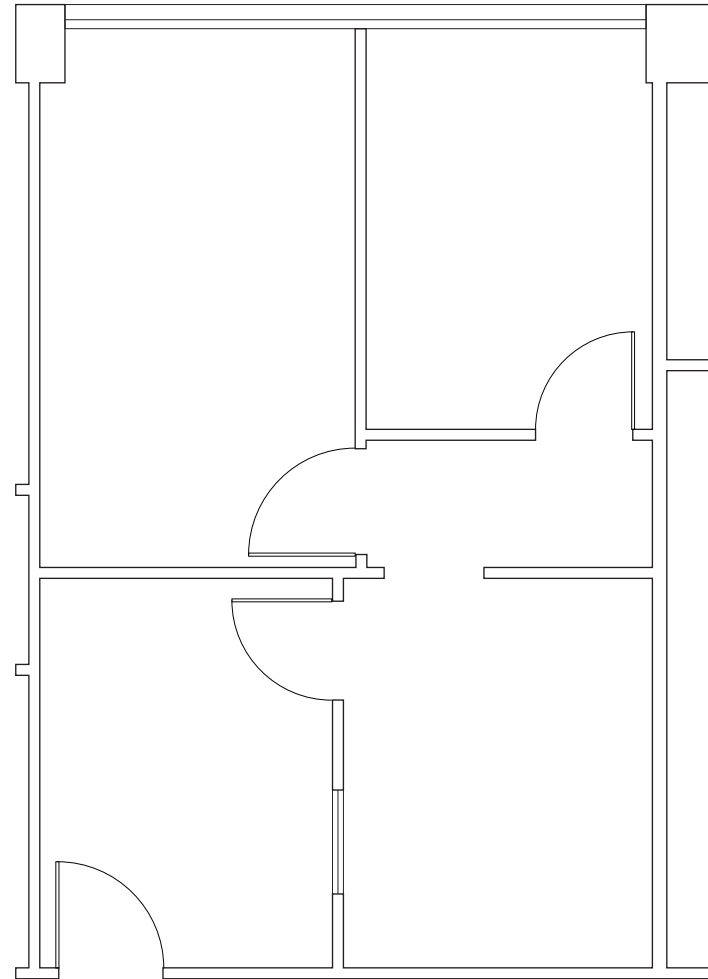
MICHAEL FELDMAN
Senior Director
Florida Healthcare Advisory Practice
+1 561 227 2063
michael.feldman@cushwake.com

DEL MAR MEDICAL OFFICE

7301 & 7301 A W. Palmetto Park Road
Boca Raton, FL

FLOOR PLAN

| | |
|----------|----------------------------------|
| BUILDING | 7301 |
| SUITE | 104B |
| SIZE | 669 SF |
| RATE | \$32/SF/NNN + \$14.02/SF OPEX |



MICHAEL FELDMAN
Senior Director
Florida Healthcare Advisory Practice
+1 561 227 2063
michael.feldman@cushwake.com