



FOR LEASE

Quality Office Space

8th & Olive Building
115 W 8th Avenue
Eugene OR 97401

BUILDING DETAILS

- Building is served with EUGNet high speed fiber
- Elevatored, ADA compliant building
- All leases are fully serviced including utilities and janitorial services
- Convenient Downtown location close to parking, public transit service and many public and private agencies

**Evans
Elder
Brown &
Seubert**

COMMERCIAL REAL ESTATE

CONTACT

Stephanie Seubert
Stephanie@eebcre.com

541.345.4860

Licensed in the State of Oregon.

Suite 200 Floor Plan

8th & Olive Building
115 West 8th Avenue, Eugene OR 97401

Evans
Elder
Brown &
Seubert

COMMERCIAL REAL ESTATE

CONTACT

**Stephanie
Seubert**

stephanie@eebcre.com

541.345.4860

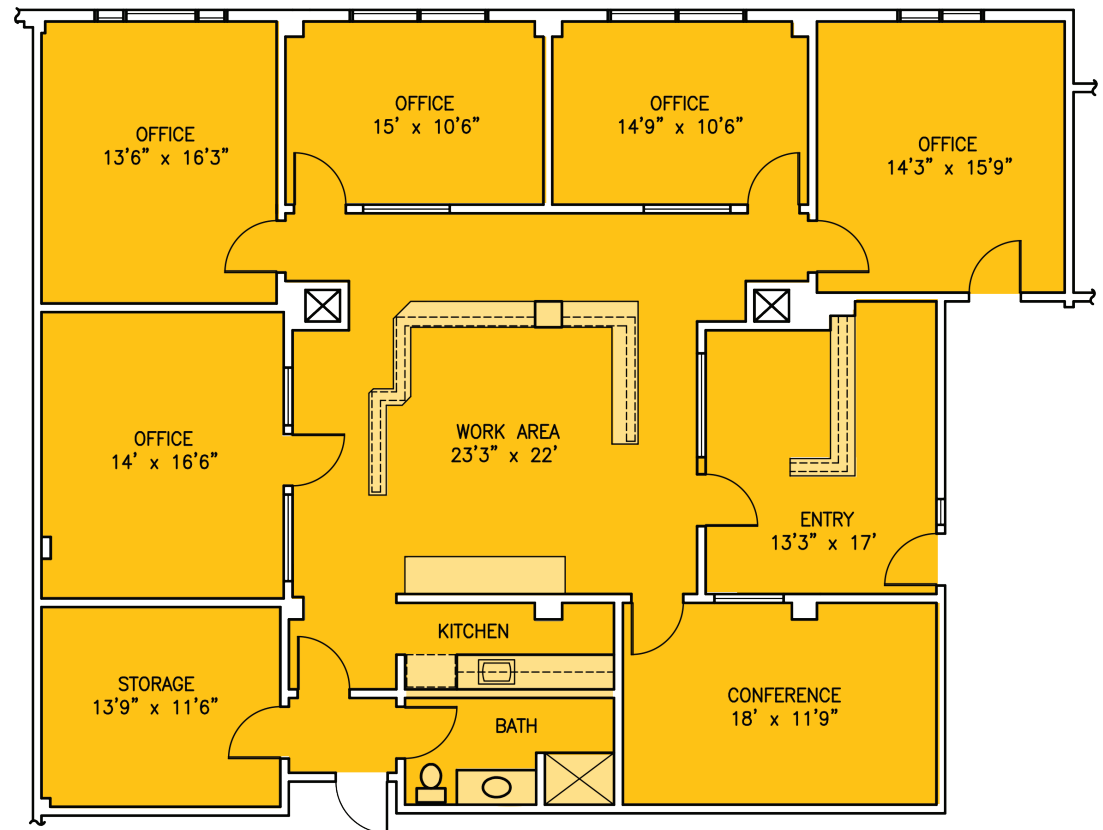
101 East Broadway
Suite #101
Eugene, OR 97401

Licensed in the
State of Oregon.

Suite 200

APPROXIMATELY 2,763 RSF

- Space consists of:
 - Entry/reception area
 - Five private offices
 - Open work area,
 - Conference room
 - Private restroom
 - Kitchen
 - Storage room
- Access to common area restrooms.
- \$1.65 per rentable square foot, per month, fully serviced



DIMENSIONS ARE APPROXIMATE
SCALE: 1" = 8'
7/11/2013

Suite 290/292 Floor Plan

8th & Olive Building
115 West 8th Avenue, Eugene OR 97401

Evans
Elder
Brown &
Seubert

COMMERCIAL REAL ESTATE

CONTACT

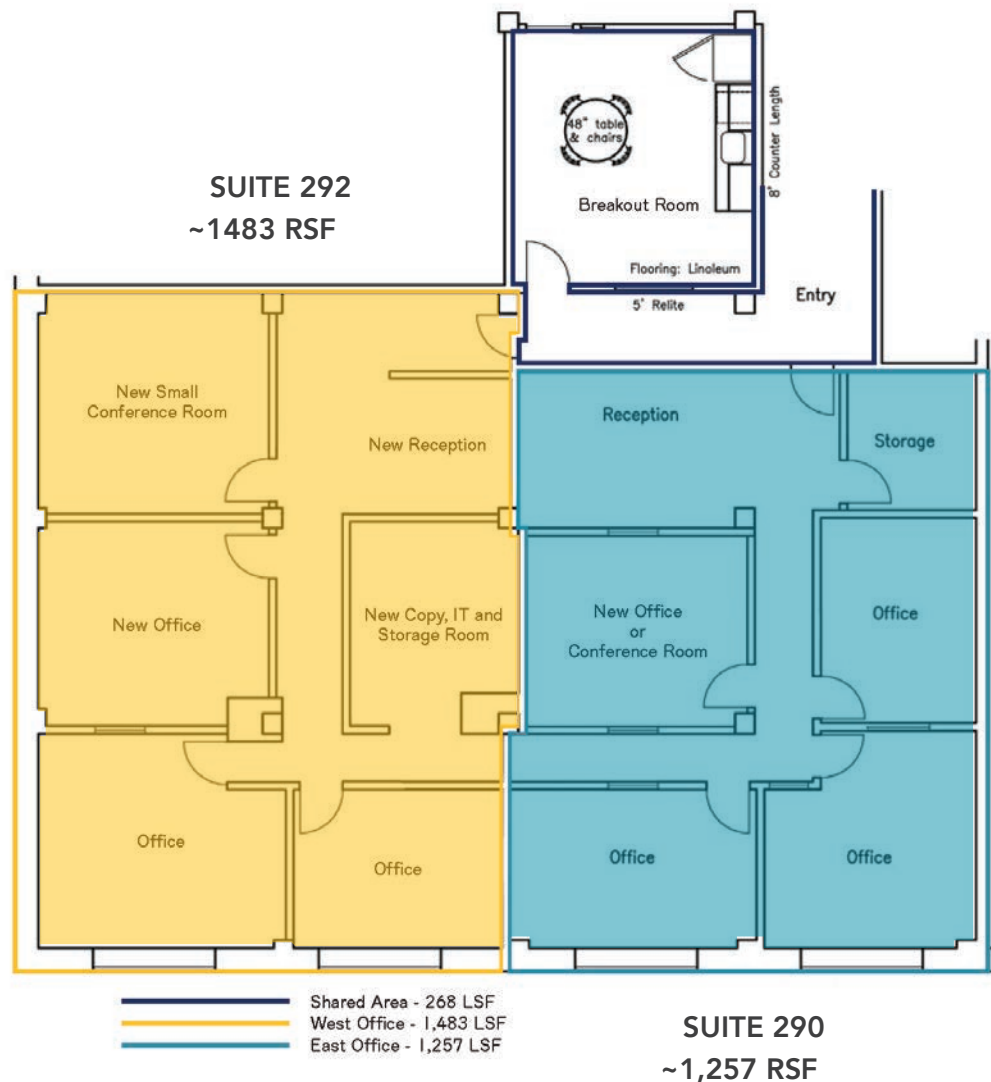
**Stephanie
Seubert**

stephanie@eebcre.com

541.345.4860

101 East Broadway
Suite #101
Eugene, OR 97401

Licensed in the
State of Oregon.



Suite 290/292

**APPROXIMATELY 2,739 TOTAL RSF
OR DIVIDED: 1,483 RSF & 1,257 RSF**

- Can divide as shown here into 2 Suites:
Suite 292: 1,483 rsf & Suite 290: 1,257 rsf
- Modern "tech" space includes open ceiling, natural exposed wood beams and a combination of hardwood floors and carpet
- Current configuration includes one private office with other partitioned areas. Additional offices could be added as shown on this plan.
- Shared kitchenette/break room could be added with build-out
- South facing windows provide good natural light
- Access to common area restrooms
- \$1.35 per rentable square foot, per month, fully serviced

Suite 330 Floor Plan

8th & Olive Building
115 West 8th Avenue, Eugene OR 97401

Evans
Elder
Brown &
Seubert

COMMERCIAL REAL ESTATE

CONTACT

**Stephanie
Seubert**

stephanie@eebcre.com

541.345.4860

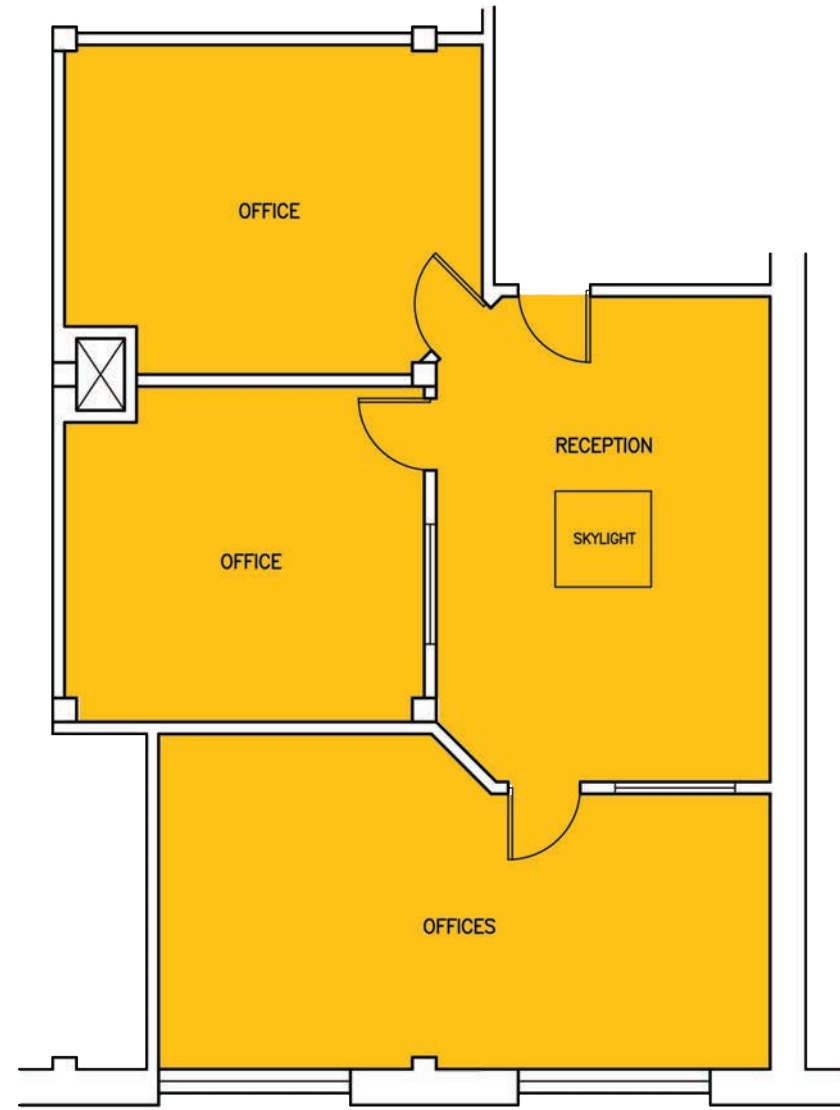
101 East Broadway
Suite #101
Eugene, OR 97401

Licensed in the
State of Oregon.

Suite 330

APPROXIMATELY 1,230 RSF

- Space consists of reception area and large offices
- Access to common area restrooms and break room with sink
- \$1.43 per rentable square foot, per month, fully serviced



Suite 360 Floor Plan

8th & Olive Building
115 West 8th Avenue, Eugene OR 97401

Evans
Elder
Brown &
Seubert

COMMERCIAL REAL ESTATE

CONTACT

**Stephanie
Seubert**

stephanie@eebcre.com

541.345.4860

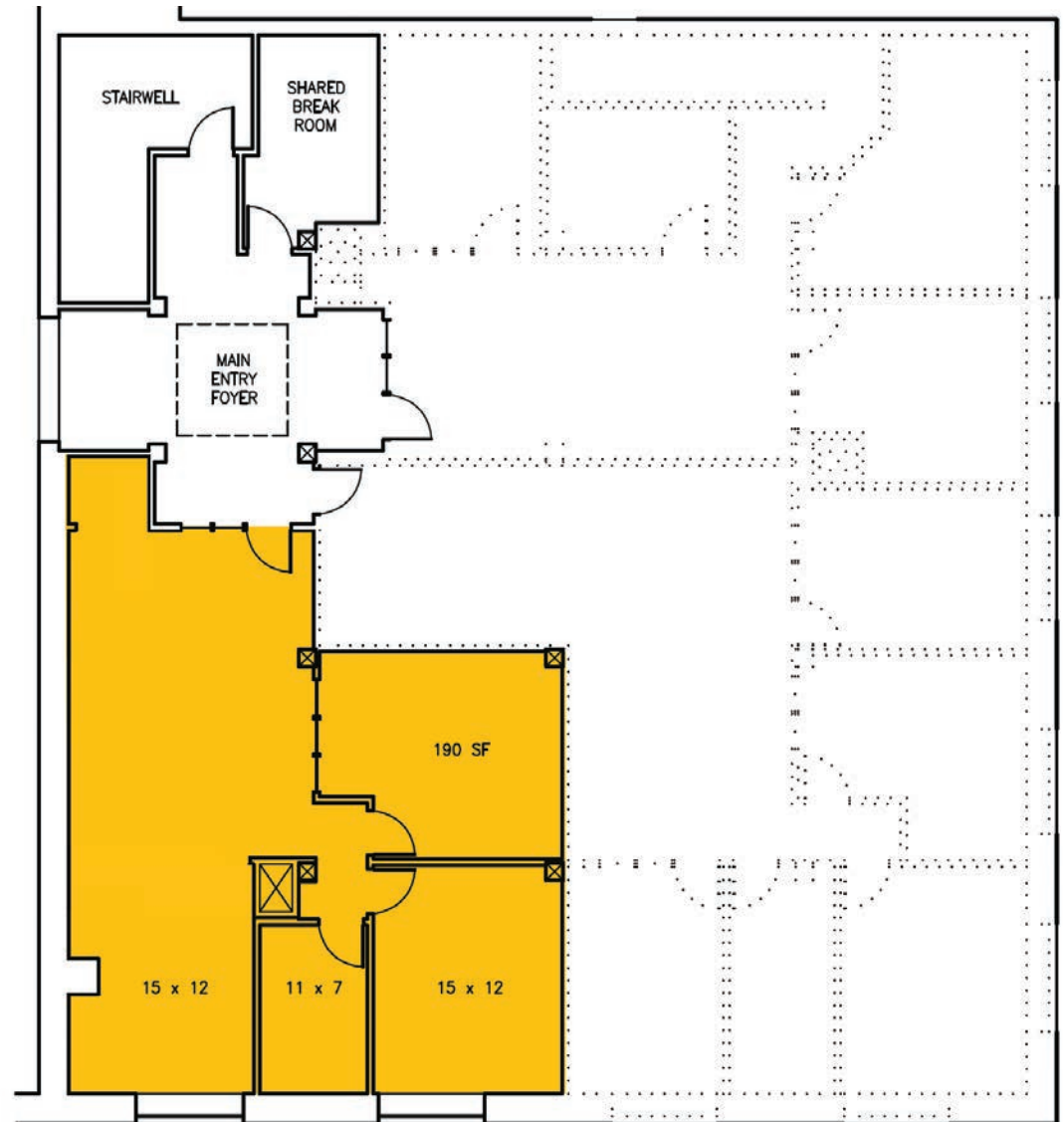
101 East Broadway
Suite #101
Eugene, OR 97401

Licensed in the
State of Oregon.

Suite 360

APPROXIMATELY 1,362 RSF

- Space consists of reception area/ open work space, two large offices and a storage/IT room
- Access to common area restrooms and break room with sink
- \$1.43 per rentable square foot, per month, fully serviced



Location

8th & Olive Building
115 West 8th Avenue, Eugene OR 97401



CONTACT

Stephanie Seubert
stephanie@eebcre.com

(541) 345-4860