

**FOR SUBLEASE**  
**7041 COMMERCE PARK DRIVE**  
Midvale, Utah 84047



**PROPERTY HIGHLIGHTS**

- 2,482 SF Total
- 1,582 SF Warehouse
- 900 SF Office
- 15' Clear Height
- 12x12 Insulated GL Door
- 208 Volt, 125 Amp, 3 Phase
- Close proximity to I-15 and many amenities
- Master Lease Expiration 05/31/2028

**Contact**

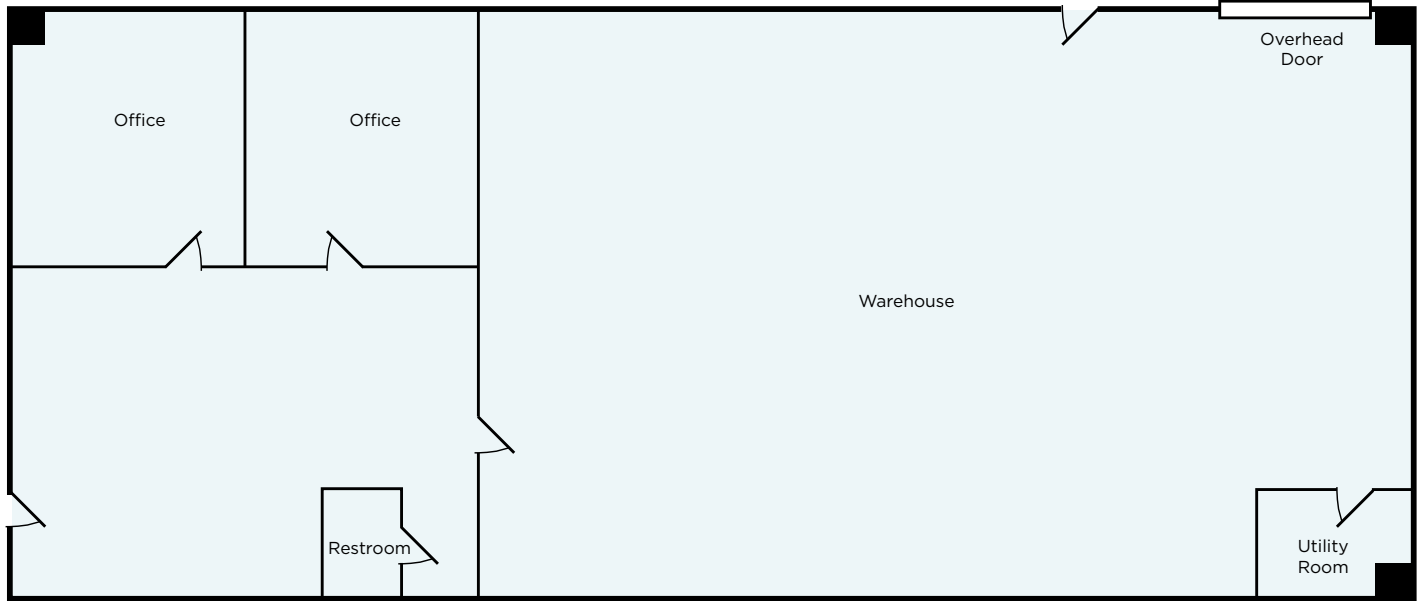
**TYSON FOWLER**  
Senior Associate  
+1 801 303 5413  
tyson.fowler@cushwake.com

170 South Main Street  
Salt Lake City, UT 84101  
+1 801 322 2000  
cushmanwakefield.com

**FOR SUBLEASE**  
**7041 COMMERCE PARK DRIVE**  
Midvale, Utah 84047



**FLOOR PLAN**



**LOCATION AERIAL**



**TYSON FOWLER**  
Senior Associate  
+1 801 303 5413  
tyson.fowler@cushwake.com

170 South Main Street  
Salt Lake City, UT 84101  
+1 801 322 2000  
cushmanwakefield.com