



107 E. DAVIE STREET

*Retail Space for Lease in
Downtown Raleigh*

LEASING

John Koonce

919.446.3339 ext. 110

john@lodendev.com

L O D E N

PROPERTY DESCRIPTION

107 E. DAVIE STREET

RETAIL FOR LEASE

Lease Rate

Call for Pricing

AVAILABILITY

± 1,568 SF

Details

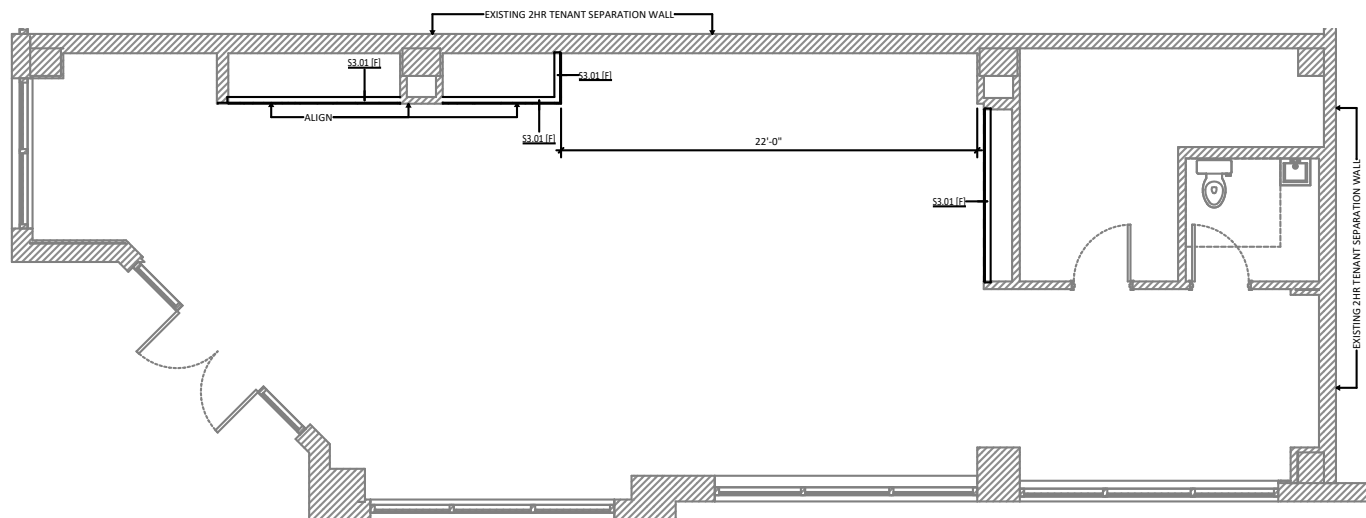
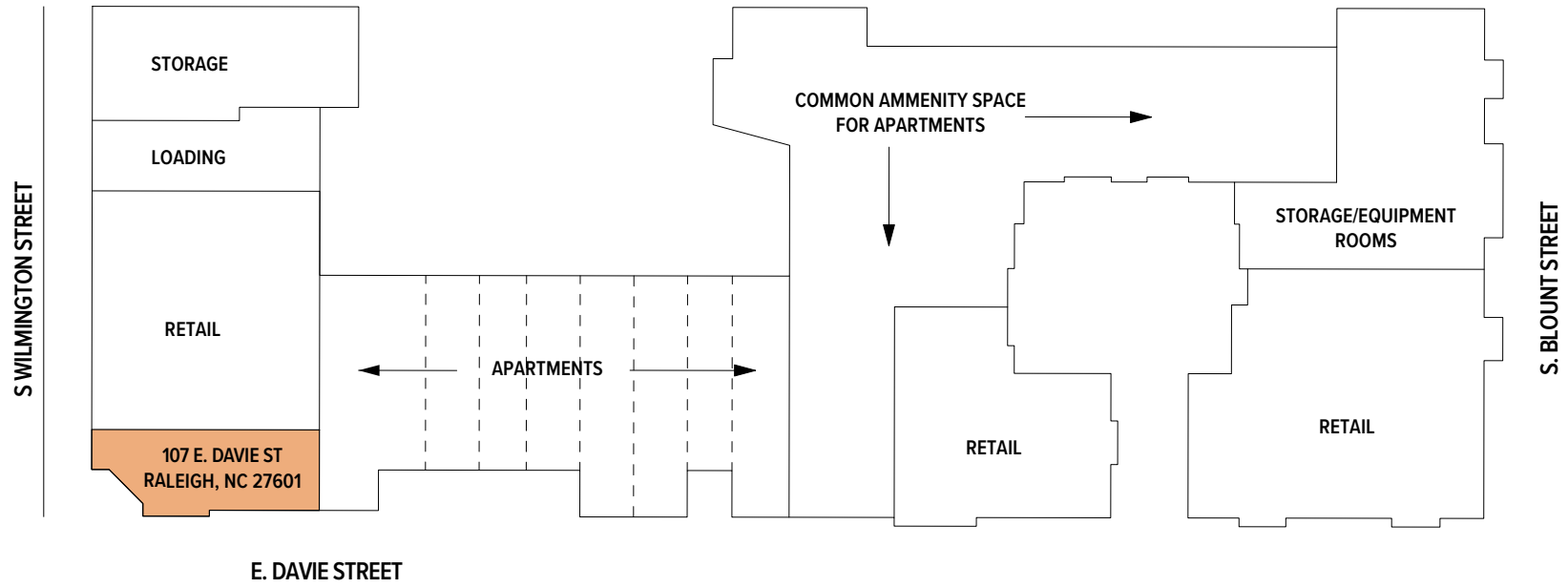
- Rare 2nd generation fitness retail space for lease in the core of Downtown Raleigh
- 543 residential units in both the Edison and Sky House residential towers located immediately above and adjacent to premises
- Walking distance from City Market and award-winning restaurants, Bida Manda and Brewery Bhavana
- Ample public parking available in deck adjacent to the space as well as street parking on Davie and Wilmington Street.
- Neighboring tenants include Sir Walter Coffee, Amorino, The Davie, El Toro Loco Taqueria, Daijobu Japanese, The Mofu Shoppe, Woody's City Market, and 42 & Lawrence

L O D E N



FLOOR PLAN

107 E. DAVIE STREET



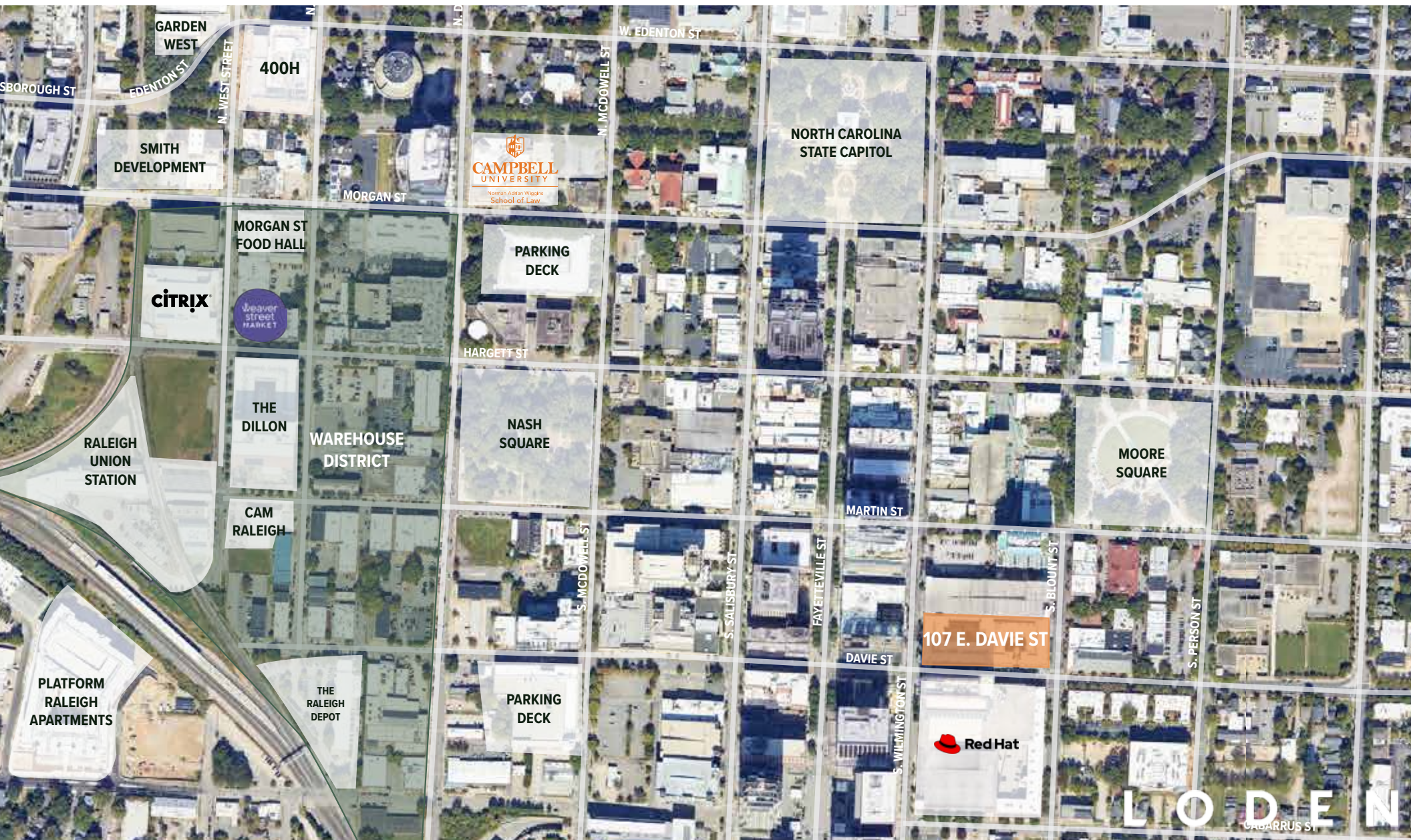
PROPERTY PHOTOS

107 E. DAVIE STREET



SITE OVERVIEW

107 E. DAVIE STREET



DEMOGRAPHICS

107 E. DAVIE STREET

RALEIGH ACCOLADES

2025

- Top 10 Best Cities to Start a Business
-WNCN
- 2nd Friendliest City in the U.S.
-YUZU, Match Group's social app
- 3rd Happiest City
-Smart Asset
- No. 3 Best State Capitol to Live in
-WalletHub
- Tapped as the Best-Performing Large Metro Area
-Milken Institute
- No. 4 for Best Cities for Headquarters
-Triangle Business Journal
- No. 7 Fastest Growing City in the U.S.
-U-Haul Annual Growth Report

LODEN

2024 DEMOGRAPHIC REPORT

	1 Mile	3 Miles	5 Miles
Population	19,521	104,157	218,622
Households	104,157	44,731	95,076
Avg. Household Income	\$98,586	\$89,179	\$91,311
Daytime Population	37,312	77,858	160,999

