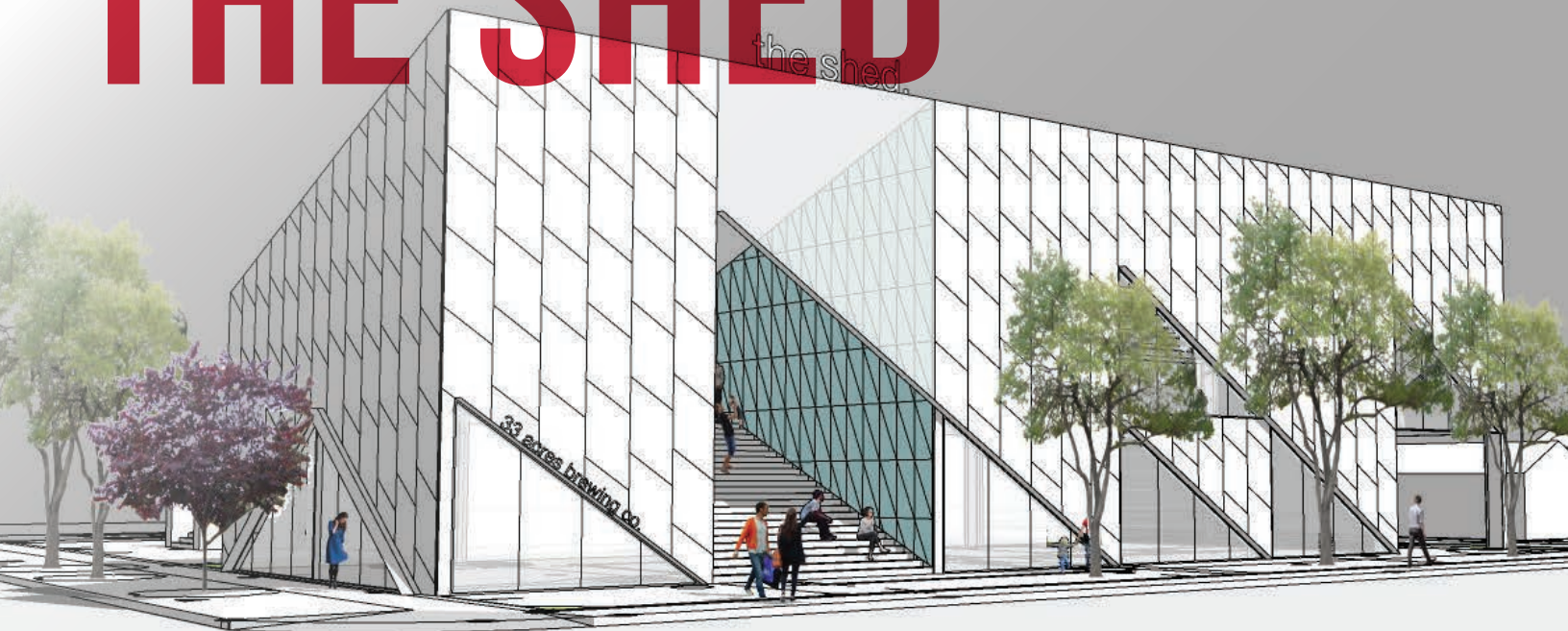


THE SHED



The Shed | Character Office Spaces & Street Level Retail

1301 10 Avenue SE | Calgary, Alberta

THE ADVANTAGES

Unlock the potential for your business in one of Calgary's most vibrant and dynamic neighborhoods – Inglewood! Nestled in the heart of this trendy and eclectic community, these upcoming retail and office spaces offer a unique opportunity to thrive in a prime location.

STRATEGIC LOCATION: in the heart of the energetic community of Inglewood, where heritage meets innovation. Positioned for success, the spaces are strategically located to capture foot traffic and engage with a diverse and thriving local community.

VERSATILE SPACES: Tailored to perfection with versatile retail and office layouts offering tons of natural light and open concept spaces. From boutique storefronts to contemporary office suites, the spaces can be customized to suit tenants' unique business needs, ensuring a perfect fit for every entrepreneur.

CULTURAL HUB: Immerse your business in Inglewood's rich cultural scene. Benefit from proximity to art galleries, live performance venues, and community events, creating a dynamic environment for both work and play. Become a part of a community that values creativity, innovation, and a strong sense of local identity. From artisan markets to trendy cafes, Inglewood offers an unparalleled blend of urban sophistication and community warmth.

AVAILABLE SPACES

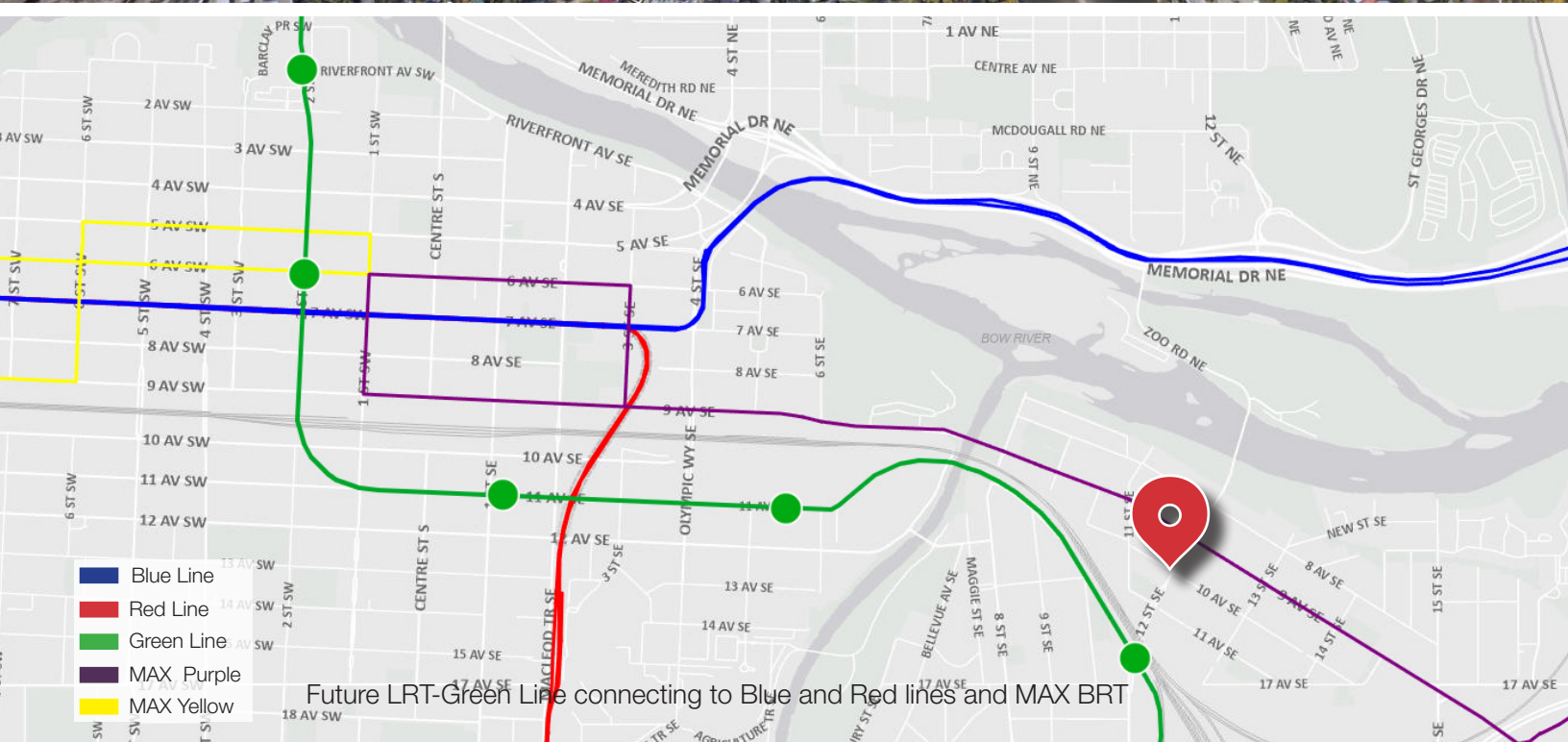
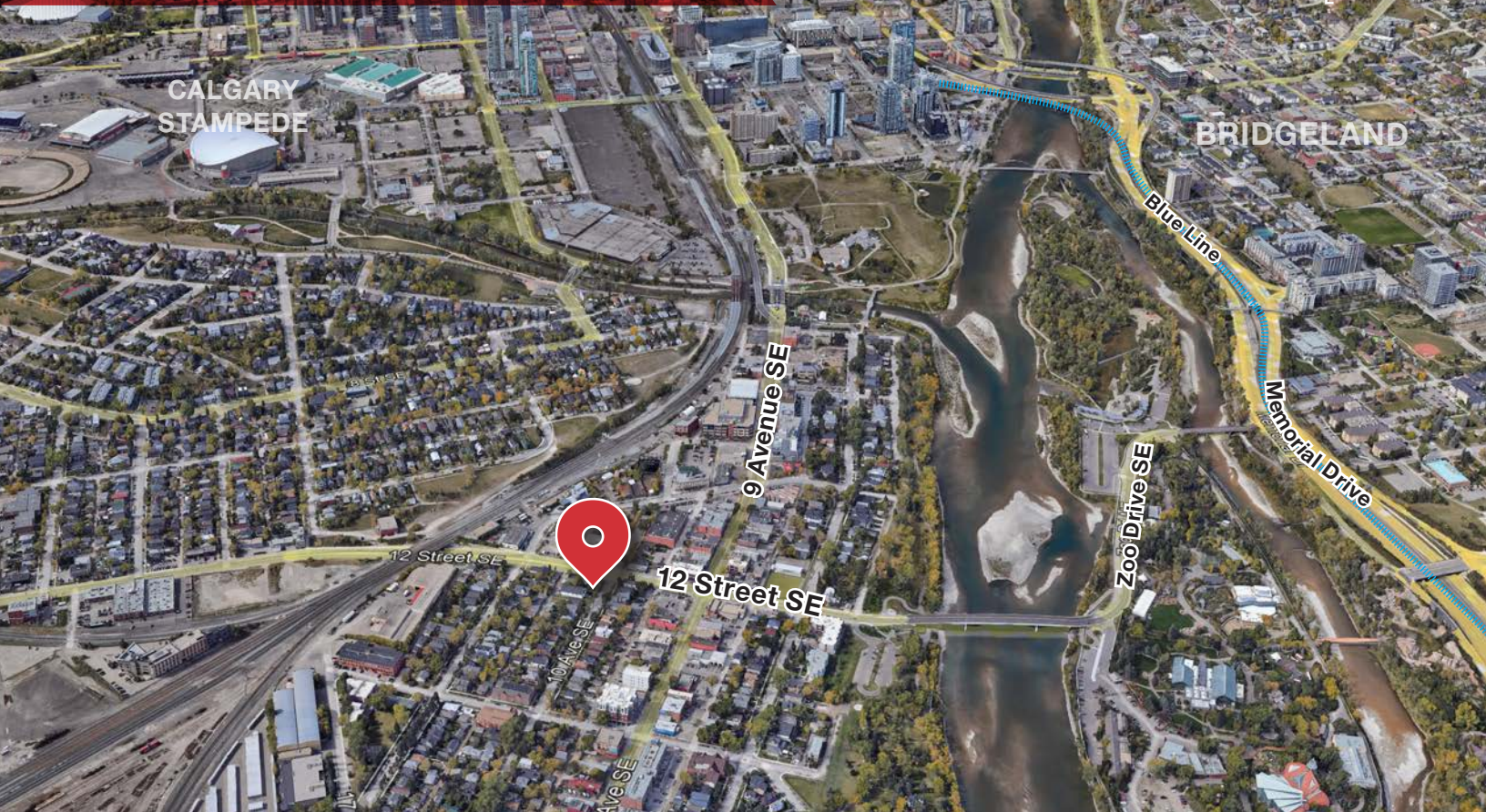
Retail Bay A	1,000 SF
Retail Bay B	1,200 SF
Retail Bay C	800 SF
Office Space	2,900 SF
Lease Rate	Market

FOR LEASE

INGLEWOOD | CALGARY

Retail & Office Spaces

DOWNTOWN
CALGARY



Chris Howard, Vice President | Investment & Leasing
403-830-6908
choward@naiadvent.com

3633 8 Street SE
Calgary, AB T2G 3A5
+1 403 984 9800
naiadvent.com



Proposed Site Plan

FOR LEASE **INGLEWOOD | CALGARY** Retail & Office Spaces



SHINGLE INSTALLATION OF HARDI-PANEL



Interior Precedent - the Livery

