

# FOR LEASE

## THE SHOPPES AT PATRIOTS LANDING

7410 Cooper Tavern Rd | Quinton, VA 23141



**S.L. NUSBAUM**  
REALTY CO.



**SARAH SADLER**

Senior Associate

O. 804.533.5390

C. 804.277.6468

ssadler@slnusbaum.com

**ANDREW THACKER**

Vice President

O. 804.320.7600

C. 804.357.6075

athacker@slnusbaum.com

**NATHAN SHOR**

Senior Vice President | Partner

O. 804.944.2399

C. 804.539.7404

nshor@slnusbaum.com

**PROUD PARTNER**

**XTEAM**  
RETAIL ADVISORS



# PROPERTY SUMMARY

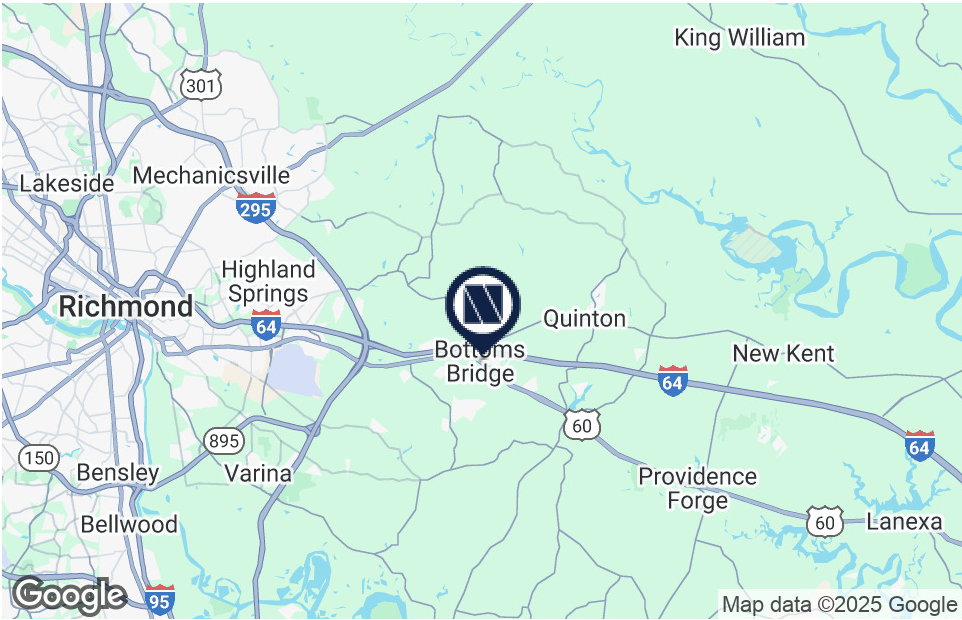
## THE SHOPPES AT PATRIOTS LANDING

7410 Cooper Tavern Rd | Quinton, VA 23141



S.L. NUSBAUM

REALTY CO.



OFFERING SUMMARY

Lease Rate:	Contact Agent
Building Size:	6,897 SF
Available SF:	1,250 SF

DEMOGRAPHICS	3 MILES	5 MILES	7 MILES
Total Population	8,671	15,305	33,498
Total Households	3,445	5,994	13,270
Average HH Income	\$143,221	\$131,093	\$117,330

PROPERTY OVERVIEW

Join Dunkin' at The Shoppes at Patriots Landing!

PROPERTY HIGHLIGHTS

- Highly visible endcap available with medical buildout
- New Kent County is the #1 fastest growing county in Virginia
- Situated between US Route 60 and I-64, and in close proximity to I-295
- Monument signage available!

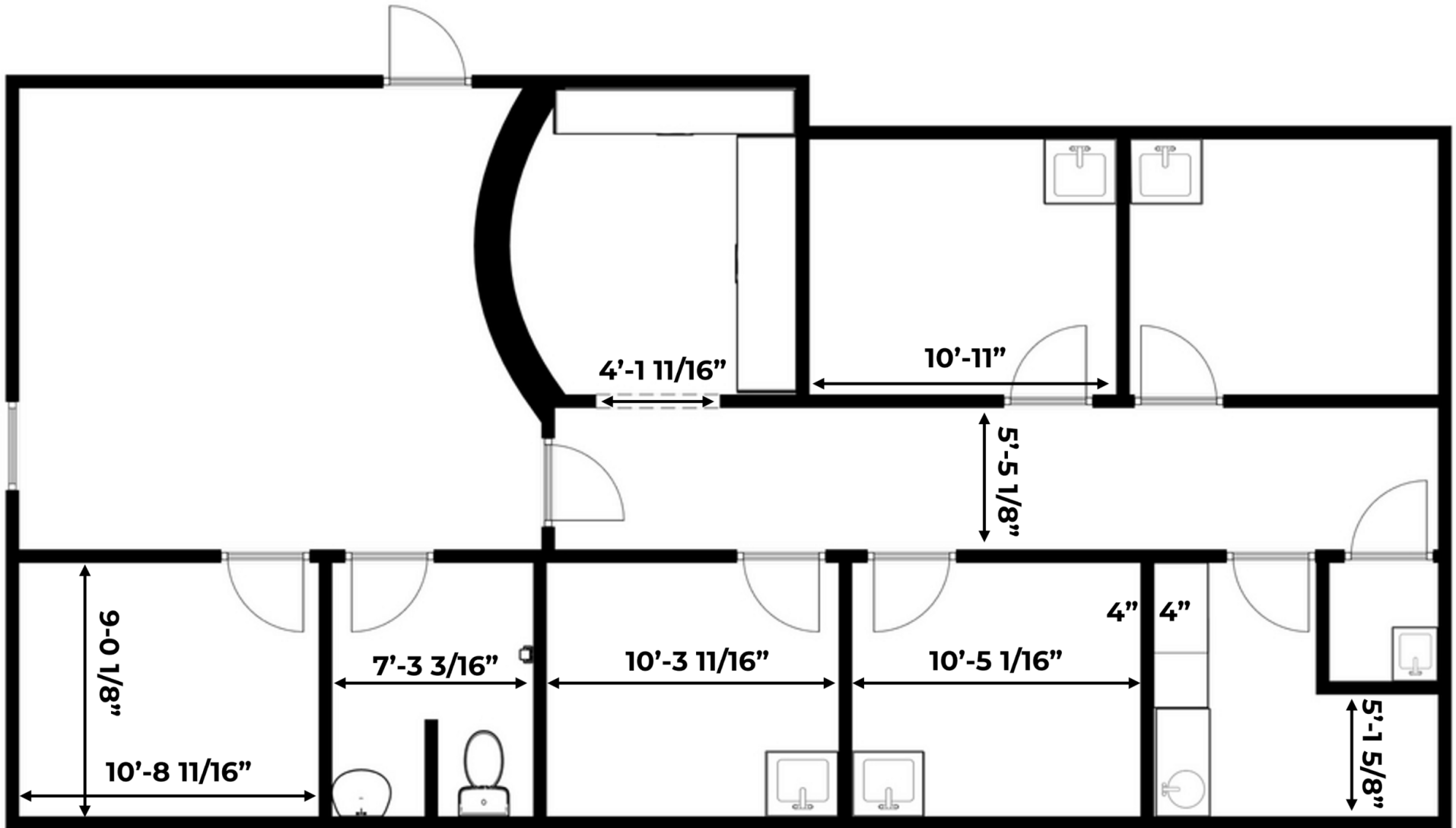
# UNIT B FLOOR PLAN

THE SHOPPES AT PATRIOTS LANDING

7410 Cooper Tavern Rd | Quinton, VA 23141



S.L. NUSBAUM  
REALTY CO.



\*For representation purposes only. Dimensions are approximate and not to scale.



# TRADE AREA

## THE SHOPPES AT PATRIOTS LANDING

7410 Cooper Tavern Rd | Quinton, VA 23141



S.L. NUSBAUM

REALTY CO.





# CONTACT INFORMATION

THE SHOPPES AT PATRIOTS LANDING  
7410 Cooper Tavern Rd | Quinton, VA 23141



**S.L. NUSBAUM**  
REALTY CO.



## SARAH SADLER

Senior Associate  
C. 804.277.6468  
O. 804.533.5390  
ssadler@slnusbaum.com

## ANDREW THACKER

Vice President  
C. 804.357.6075  
O. 804.320.7600  
athacker@slnusbaum.com

## NATHAN SHOR

Senior Vice President | Partner  
C. 804.539.7404  
O. 804.944.2399  
nshor@slnusbaum.com

### COMMITMENT. INTEGRITY. EXCELLENCE. SINCE 1906.

Serving the Southeast and Mid-Atlantic region for well over a century, S.L. Nusbaum Realty Co. continues to provide a comprehensive experience for our clients and customers in all aspects of the multifamily and commercial real estate industry.

[CLICK HERE TO LEARN MORE](#)

PROUD PARTNER

**XTEAM**  
RETAIL ADVISORS

[CLICK HERE TO LEARN MORE](#)

### DISCLAIMER:

No warranty or representation, expressed or implied, is made to the accuracy or completeness of the information contained herein, and same is submitted subject to errors, omissions, change of price, rental or other conditions, withdrawal without notice, and to any special listing conditions imposed by the property owner(s). As applicable, we make no representation as to the condition of the property (or properties) in question or the property's (or properties') compliance with applicable laws, regulations, and codes.