



## OFFICE SPACE | FOR LEASE

### **5771 VETERANS PARKWAY, SUITE B, COLUMBUS, GA 31904**

Professional office suite available with eight private offices, conference room, kitchen and two bathrooms.

**ERNEST SMALLMAN IV, CCIM**

c 706-888-6651

[ernie@erniesmallman.com](mailto:ernie@erniesmallman.com)

1025 1st Ave | Columbus, GA 31901 | 706-256-1500



**COLDWELL BANKER**

**KENNON, PARKER,  
DUNCAN & DAVIS**





## PROPERTY INFORMATION

AVAILABLE SF\*  
1,988 SF

BUILDING SIZE\*  
9,082 SF

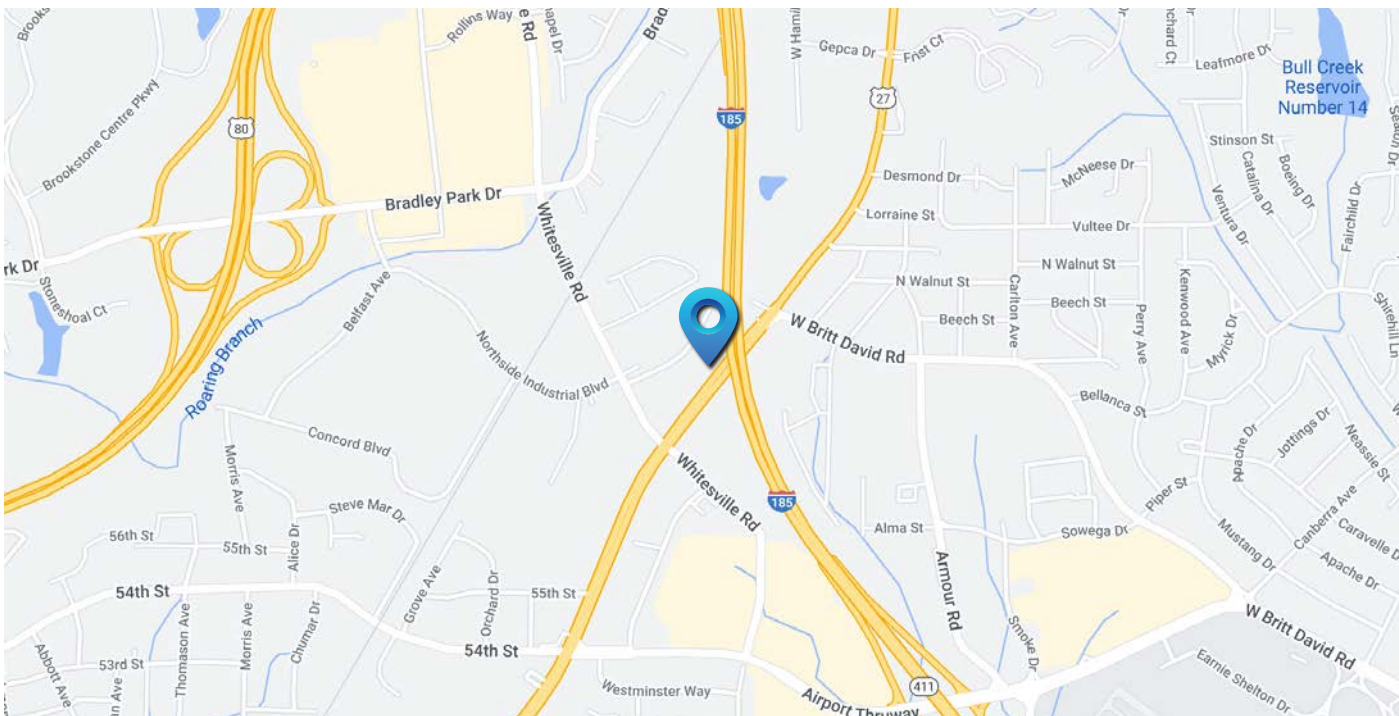
ACREAGE\*  
0.779 Acres

### FEATURES

- Welcoming reception area
- Eight private offices
- Two bathrooms, kitchen and conference room
- Surface parking

### LEASE RATE

Base Rent + CAM = \$18.00 / sf



Self Navigating Virtual Tour:  
[5771 Veterans Pkwy, Suite B](#)

**ERNEST SMALLMAN IV, CCIM**

c 706-888-6651

ernie@erniesmallman.com

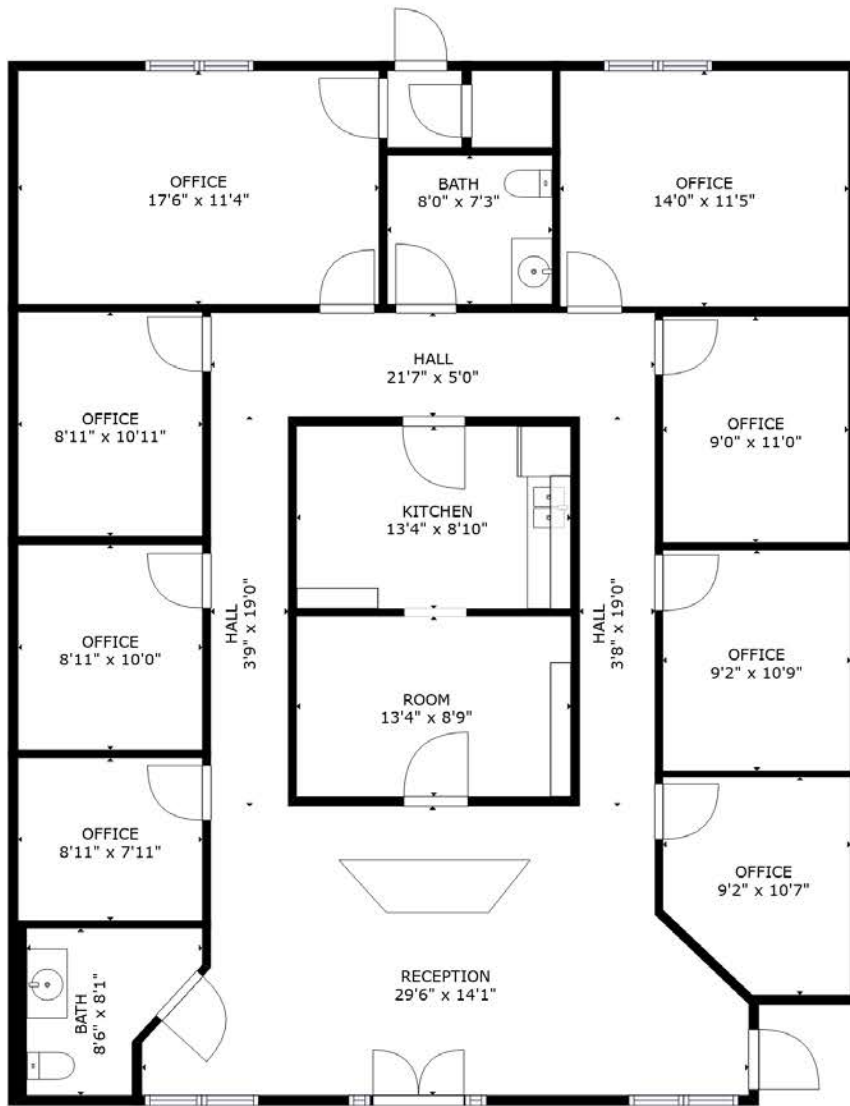
1025 1st Ave | Columbus, GA 31901 | 706-256-1500



**COLDWELL BANKER**

**KENNON, PARKER,  
DUNCAN & DAVIS**

\*The land acreage and/or building square footage was obtained from the County's Geographical Information System or other electronic resources. For exact square footage and/or acreage, we recommend that prior to purchase, a prospective Buyer/Tenant obtain a boundary survey or have the building measured professionally.



FLOOR 1

**ERNEST SMALLMAN IV, CCIM**

c 706-888-6651

ernie@erniesmallman.com

1025 1st Ave | Columbus, GA 31901 | 706-256-1500



**COLDWELL BANKER**

**KENNON, PARKER,  
DUNCAN & DAVIS**