

# HOHOKAM CORPORATE CENTER

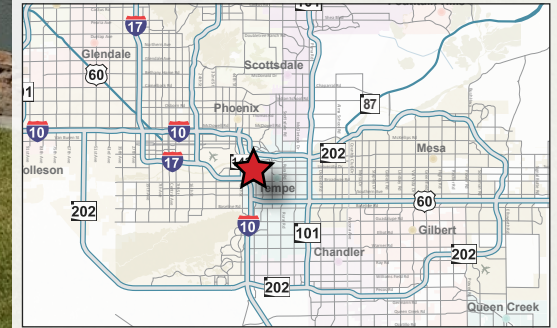
2245 W. UNIVERSITY DR. TEMPE, AZ

Industrial/Flex Space



## PROJECT DETAILS

- Located on  $\pm 2.86$  Acres of Land
- 12' Clear Height
- I-1 Zoning, City of Tempe
- Frontage on University Drive
- 1/4 Mile from SR-143 Freeway
- Minutes from Sky Harbor Airport



For More Information, Please Contact:

**Tyson Breinholt**

D 480.966.7513

M 602.315.7131

tbreinholt@cpiaz.com

**Cliff Jenkins**

D: 480.634.2332

M: 480.888.6017

cjenkins@cpiaz.com

**Cory Breinholt**

D 480.889.2569

M 480.220.9987

cbreinholt@cpiaz.com

**Caleb Allen**

D 480.621.3290

M 480.622.4174

callen@cpiaz.com



**COMMERCIAL PROPERTIES INC.**

Locally Owned. Globally Connected. CORFAC

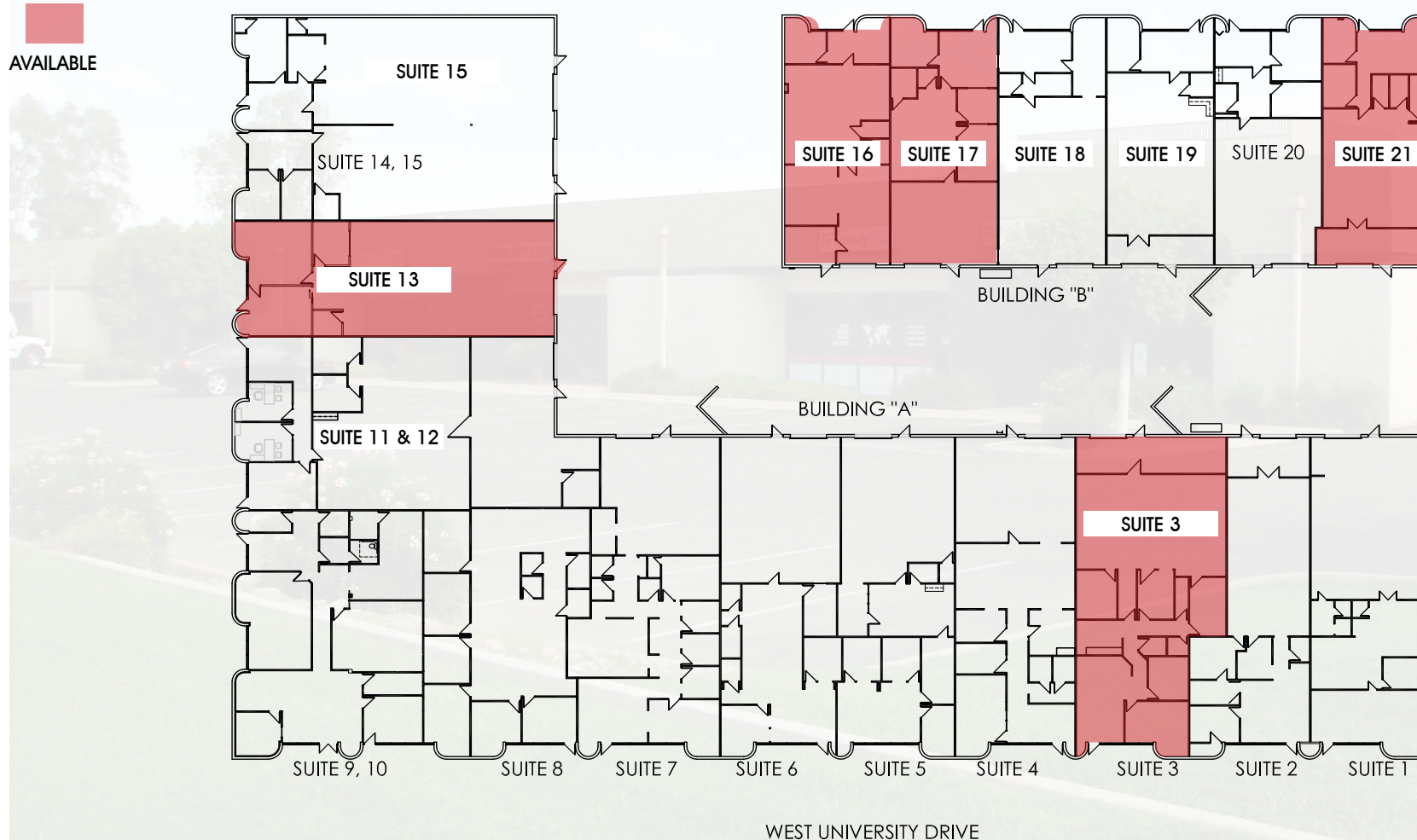
TEMPE: 2323 W. University Drive, Tempe, AZ 85281 | 480.966.2301  
SCOTTSDALE: 8777 N. Galley Center Dr., Suite 245, Scottsdale, AZ 85258 | www.cpiaz.com

The information contained herein has been obtained from various sources. We have no reason to doubt its accuracy; however, J & J Commercial Properties, Inc. has not verified such information and makes no guarantee, warranty or representation about such information. The prospective buyer or lessee should independently verify all dimensions, specifications, floor plans, and all information prior to the lease or purchase of the property. All offerings are subject to price change, prior sale, lease, or withdrawal from the market without prior notice. Effective: 10/22/25

# HOHOKAM CORPORATE CENTER

2245 W. UNIVERSITY DR. TEMPE, AZ

Industrial/Flex Space



For More Information, Please Contact:

**Tyson Breinholt**

D 480.966.7513

M 602.315.7131

tbreinholt@cpiaz.com

**Cliff Jenkins**

D: 480.634.2332

M: 480.888.6017

cjenkins@cpiaz.com

**Cory Breinholt**

D 480.889.2569

M 480.220.9987

cbreinholt@cpiaz.com

**Caleb Allen**

D 480.621.3290

M 480.622.4174

callen@cpiaz.com

Ownership Entity Controlled by:

**TRAVELERS**



**COMMERCIAL PROPERTIES INC.**

Locally Owned. Globally Connected. CORFAC

TEMPE: 2323 W. University Drive, Tempe, AZ 85281 | 480.966.2301  
SCOTTSDALE: 8777 N. Galley Center Dr., Suite 245, Scottsdale, AZ 85258 | www.cpiaz.com

The information contained herein has been obtained from various sources. We have no reason to doubt its accuracy; however, J & J Commercial Properties, Inc. has not verified such information and makes no guarantee, warranty or representation about such information. The prospective buyer or lessee should independently verify all dimensions, specifications, floor plans, and all information prior to the lease or purchase of the property. All offerings are subject to price change, prior sale, lease, or withdrawal from the market without prior notice. Effective: 10 22 25



# HOHOKAM CORPORATE CENTER

2245 W. UNIVERSITY DR. TEMPE, AZ

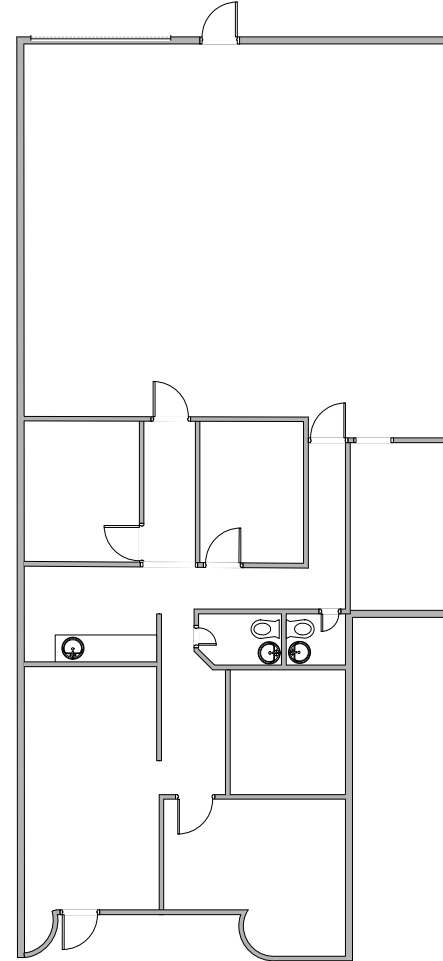
Industrial/Flex Space

## SUITE 3

Lease: \$1.20 IMG

±3,210 SF

- Reception
- 2 Office
- 2 Restrooms
- Power: 200 AMPS 3 Phase  
120/208
- 100% HVAC Warehouse



For More Information, Please Contact:

**Tyson Breinholt**

D 480.966.7513

M 602.315.7131

tbreinholt@cpiaz.com

**Cliff Jenkins**

D: 480.634.2332

M: 480.888.6017

cjenkins@cpiaz.com

**Cory Breinholt**

D 480.889.2569

M 480.220.9987

cbreinholt@cpiaz.com

**Caleb Allen**

D 480.621.3290

M 480.622.4174

callen@cpiaz.com



**COMMERCIAL PROPERTIES INC.**

Locally Owned. Globally Connected. CORFAC

TEMPE: 2323 W. University Drive, Tempe, AZ 85281 | 480.966.2301  
SCOTTSDALE: 8777 N. Gaihey Center Dr., Suite 245, Scottsdale, AZ 85258 | www.cpiaz.com

Ownership Entity Controlled by:  
**TRAVELERS** 

The information contained herein has been obtained from various sources. We have no reason to doubt its accuracy; however, J & J Commercial Properties, Inc. has not verified such information and makes no guarantee, warranty or representation about such information. The prospective buyer or lessee should independently verify all dimensions, specifications, floor plans, and all information prior to the lease or purchase of the property. All offerings are subject to price change, prior sale, lease, or withdrawal from the market without prior notice. Effective: 10 22 25

# HOHOKAM CORPORATE CENTER

2245 W. UNIVERSITY DR. TEMPE, AZ

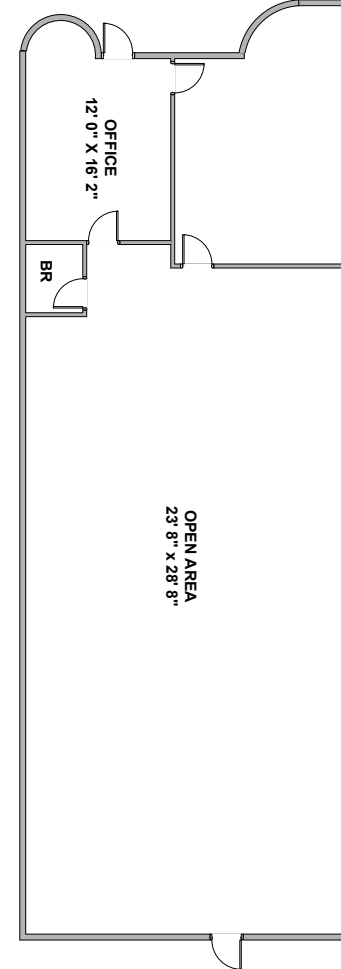
Industrial/Flex Space

## SUITE 13

Lease: \$1.20 IMG

±2,740 SF

- 1 Office
- 1 Restroom
- Power: 200 AMPS 3 Phase  
120/208
- 100% HVAC Warehouse



For More Information, Please Contact:

**Tyson Breinholt**

D 480.966.7513

M 602.315.7131

tbreinholt@cpiaz.com

**Cliff Jenkins**

D: 480.634.2332

M: 480.888.6017

cjenkins@cpiaz.com

**Cory Breinholt**

D 480.889.2569

M 480.220.9987

cbreinholt@cpiaz.com

**Caleb Allen**

D 480.621.3290

M 480.622.4174

callen@cpiaz.com



**COMMERCIAL PROPERTIES INC.**

Locally Owned. Globally Connected. CORFAC

TEMPE: 2323 W. University Drive, Tempe, AZ 85281 | 480.966.2301  
SCOTTSDALE: 8777 N. Gaihey Center Dr., Suite 245, Scottsdale, AZ 85258 | www.cpiaz.com

Ownership Entity Controlled by:  
**TRAVELERS**

The information contained herein has been obtained from various sources. We have no reason to doubt its accuracy; however, J & J Commercial Properties, Inc. has not verified such information and makes no guarantee, warranty or representation about such information. The prospective buyer or lessee should independently verify all dimensions, specifications, floor plans, and all information prior to the lease or purchase of the property. All offerings are subject to price change, prior sale, lease, or withdrawal from the market without prior notice. Effective: 10 22 25

# HOHOKAM CORPORATE CENTER

2245 W. UNIVERSITY DR. TEMPE, AZ

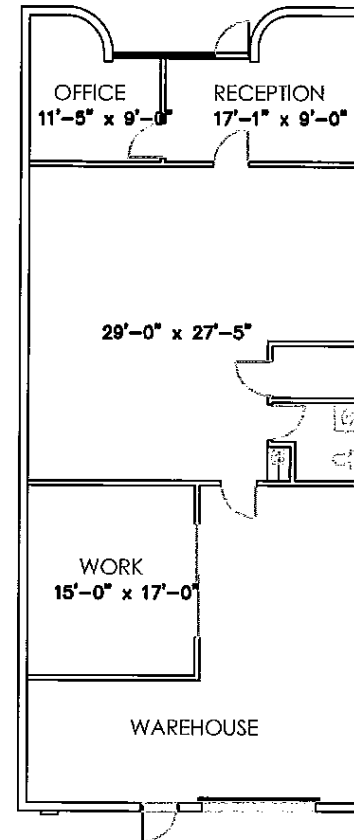
Industrial/Flex Space

## SUITE 16

Lease: \$1.20 IMG

±2,100 SF

- 1 Office
- 1 Restroom
- Bullpen
- Power: 200 AMPS 3 Phase 120/208
- 100% HVAC Warehouse



For More Information, Please Contact:

**Tyson Breinholt**

D 480.966.7513

M 602.315.7131

tbreinholt@cpiaz.com

**Cliff Jenkins**

D: 480.634.2332

M: 480.888.6017

cjenkins@cpiaz.com

**Cory Breinholt**

D 480.889.2569

M 480.220.9987

cbreinholt@cpiaz.com

**Caleb Allen**

D 480.621.3290

M 480.622.4174

callen@cpiaz.com



**COMMERCIAL PROPERTIES INC.**

Locally Owned. Globally Connected. CORFAC

TEMPE: 2323 W. University Drive, Tempe, AZ 85281 | 480.966.2301  
SCOTTSDALE: 8777 N. Gaihey Center Dr., Suite 245, Scottsdale, AZ 85258 | www.cpiaz.com

Ownership Entity Controlled by:  
**TRAVELERS**

The information contained herein has been obtained from various sources. We have no reason to doubt its accuracy; however, J & J Commercial Properties, Inc. has not verified such information and makes no guarantee, warranty or representation about such information. The prospective buyer or lessee should independently verify all dimensions, specifications, floor plans, and all information prior to the lease or purchase of the property. All offerings are subject to price change, prior sale, lease, or withdrawal from the market without prior notice. Effective: 10 22 25

# HOHOKAM CORPORATE CENTER

2245 W. UNIVERSITY DR. TEMPE, AZ

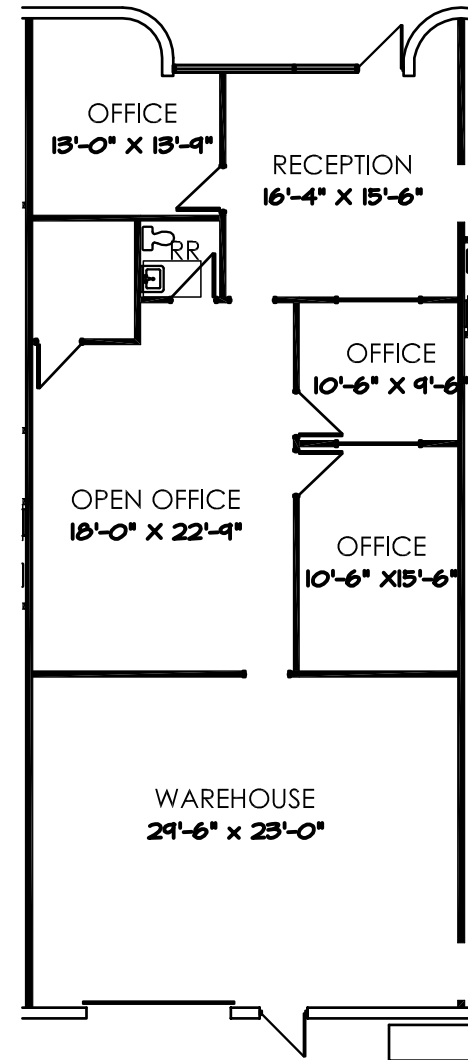
Industrial/Flex Space

## SUITE 17

Lease: \$1.20 IMG

±2,100 SF

- Reception
- 3 Offices
- Bullpen
- Restroom
- Storage Closet
- 100% HVAC Warehouse



For More Information, Please Contact:

**Tyson Breinholt**

D 480.966.7513

M 602.315.7131

tbreinholt@cpiaz.com

**Cliff Jenkins**

D: 480.634.2332

M: 480.888.6017

cjenkins@cpiaz.com

**Cory Breinholt**

D 480.889.2569

M 480.220.9987

cbreinholt@cpiaz.com

**Caleb Allen**

D 480.621.3290

M 480.622.4174

callen@cpiaz.com



**COMMERCIAL PROPERTIES INC.**

Locally Owned. Globally Connected. CORFAC

TEMPE: 2323 W. University Drive, Tempe, AZ 85281 | 480.966.2301  
SCOTTSDALE: 8777 N. Gaihey Center Dr., Suite 245, Scottsdale, AZ 85258 | www.cpiaz.com

Ownership Entity Controlled by:  
**TRAVELERS**

The information contained herein has been obtained from various sources. We have no reason to doubt its accuracy; however, J & J Commercial Properties, Inc. has not verified such information and makes no guarantee, warranty or representation about such information. The prospective buyer or lessee should independently verify all dimensions, specifications, floor plans, and all information prior to the lease or purchase of the property. All offerings are subject to price change, prior sale, lease, or withdrawal from the market without prior notice. Effective: 10.22.25

# HOHOKAM CORPORATE CENTER

2245 W. UNIVERSITY DR. TEMPE, AZ

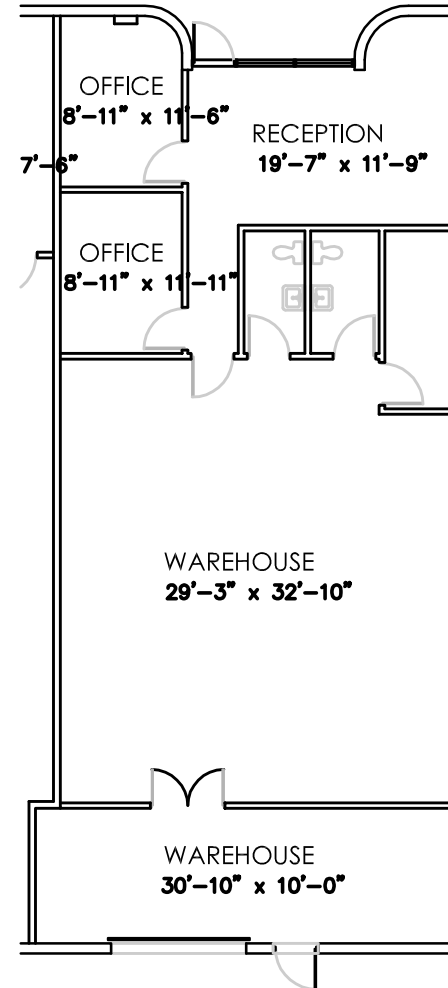
Industrial/Flex Space

## SUITE 21

Lease: \$1.20 IMG

±2,100 SF

- Reception
- 2 Offices
- 2 Restrooms
- Power: 200 AMPS 3 Phase  
120/208V
- 100% A/C Warehouse



For More Information, Please Contact:

**Tyson Breinholt**

D 480.966.7513

M 602.315.7131

tbreinholt@cpiaz.com

**Cliff Jenkins**

D: 480.634.2332

M: 480.888.6017

cjenkins@cpiaz.com

**Cory Breinholt**

D 480.889.2569

M 480.220.9987

cbreinholt@cpiaz.com

**Caleb Allen**

D 480.621.3290

M 480.622.4174

callen@cpiaz.com



**COMMERCIAL PROPERTIES INC.**

Locally Owned. Globally Connected. CORFAC

TEMPE: 2323 W. University Drive, Tempe, AZ 85281 | 480.966.2301  
SCOTTSDALE: 8777 N. Gainey Center Dr., Suite 245, Scottsdale, AZ 85258 | www.cpiaz.com

Ownership Entity Controlled by:  
**TRAVELERS**

The information contained herein has been obtained from various sources. We have no reason to doubt its accuracy; however, J & J Commercial Properties, Inc. has not verified such information and makes no guarantee, warranty or representation about such information. The prospective buyer or lessee should independently verify all dimensions, specifications, floor plans, and all information prior to the lease or purchase of the property. All offerings are subject to price change, prior sale, lease, or withdrawal from the market without prior notice. Effective: 10.22.25

# HOHOKAM CORPORATE CENTER

2245 W. UNIVERSITY DR. TEMPE, AZ

Industrial/Flex Space



For More Information, Please Contact:

**Tyson Breinholt**

D 480.966.7513

M 602.315.7131

[tbreinholt@cpiaz.com](mailto:tbreinholt@cpiaz.com)

**Cliff Jenkins**

D: 480.634.2332

M: 480.888.6017

[cjenkins@cpiaz.com](mailto:cjenkins@cpiaz.com)

**Cory Breinholt**

D 480.889.2569

M 480.220.9987

[cbreinholt@cpiaz.com](mailto:cbreinholt@cpiaz.com)

**Caleb Allen**

D 480.621.3290

M 480.622.4174

[callen@cpiaz.com](mailto:callen@cpiaz.com)



**COMMERCIAL PROPERTIES INC.**

Locally Owned. Globally Connected. CORFAC

TEMPE: 2323 W. University Drive, Tempe, AZ 85281 | 480.966.2301  
SCOTTSDALE: 8777 N. Gaihey Center Dr., Suite 245, Scottsdale, AZ 85258 | [www.cpiaz.com](http://www.cpiaz.com)

Ownership Entity Controlled by:  
**TRAVELERS**

The information contained herein has been obtained from various sources. We have no reason to doubt its accuracy; however, J & J Commercial Properties, Inc. has not verified such information and makes no guarantee, warranty or representation about such information. The prospective buyer or lessee should independently verify all dimensions, specifications, floor plans, and all information prior to the lease or purchase of the property. All offerings are subject to price change, prior sale, lease, or withdrawal from the market without prior notice.  
Effective: 10 22 25



# HOHOKAM CORPORATE CENTER

2245 W. UNIVERSITY DR. TEMPE, AZ

Industrial/Flex Space



For More Information, Please Contact:

**Tyson Breinholt**

D 480.966.7513

M 602.315.7131

[tbreinholt@cpiaz.com](mailto:tbreinholt@cpiaz.com)

**Cliff Jenkins**

D: 480.634.2332

M: 480.888.6017

[cjenkins@cpiaz.com](mailto:cjenkins@cpiaz.com)

**Cory Breinholt**

D 480.889.2569

M 480.220.9987

[cbreinholt@cpiaz.com](mailto:cbreinholt@cpiaz.com)

**Caleb Allen**

D 480.621.3290

M 480.622.4174


[callen@cpiaz.com](mailto:callen@cpiaz.com)

Ownership Entity Controlled by:

**TRAVELERS** 



**COMMERCIAL PROPERTIES INC.**

Locally Owned. Globally Connected. 

TEMPE: 2323 W. University Drive, Tempe, AZ 85281 | 480.966.2301  
SCOTTSDALE: 8777 N. Gayley Center Dr., Suite 245, Scottsdale, AZ 85258 | [www.cpiaz.com](http://www.cpiaz.com)

The information contained herein has been obtained from various sources. We have no reason to doubt its accuracy; however, J & J Commercial Properties, Inc. has not verified such information and makes no guarantee, warranty or representation about such information. The prospective buyer or lessee should independently verify all dimensions, specifications, floor plans, and all information prior to the lease or purchase of the property. All offerings are subject to price change, prior sale, lease, or withdrawal from the market without prior notice. Effective: 10 22 25