



MCLEAN HILTON OFFICE BUILDING

7918 JONES BRANCH DRIVE
TYSONS CORNER, VA



UNDENIABLE ACCESS

The Expresslanes logo, which includes a stylized 'e' icon followed by the word 'expresslanes' in a lowercase sans-serif font.



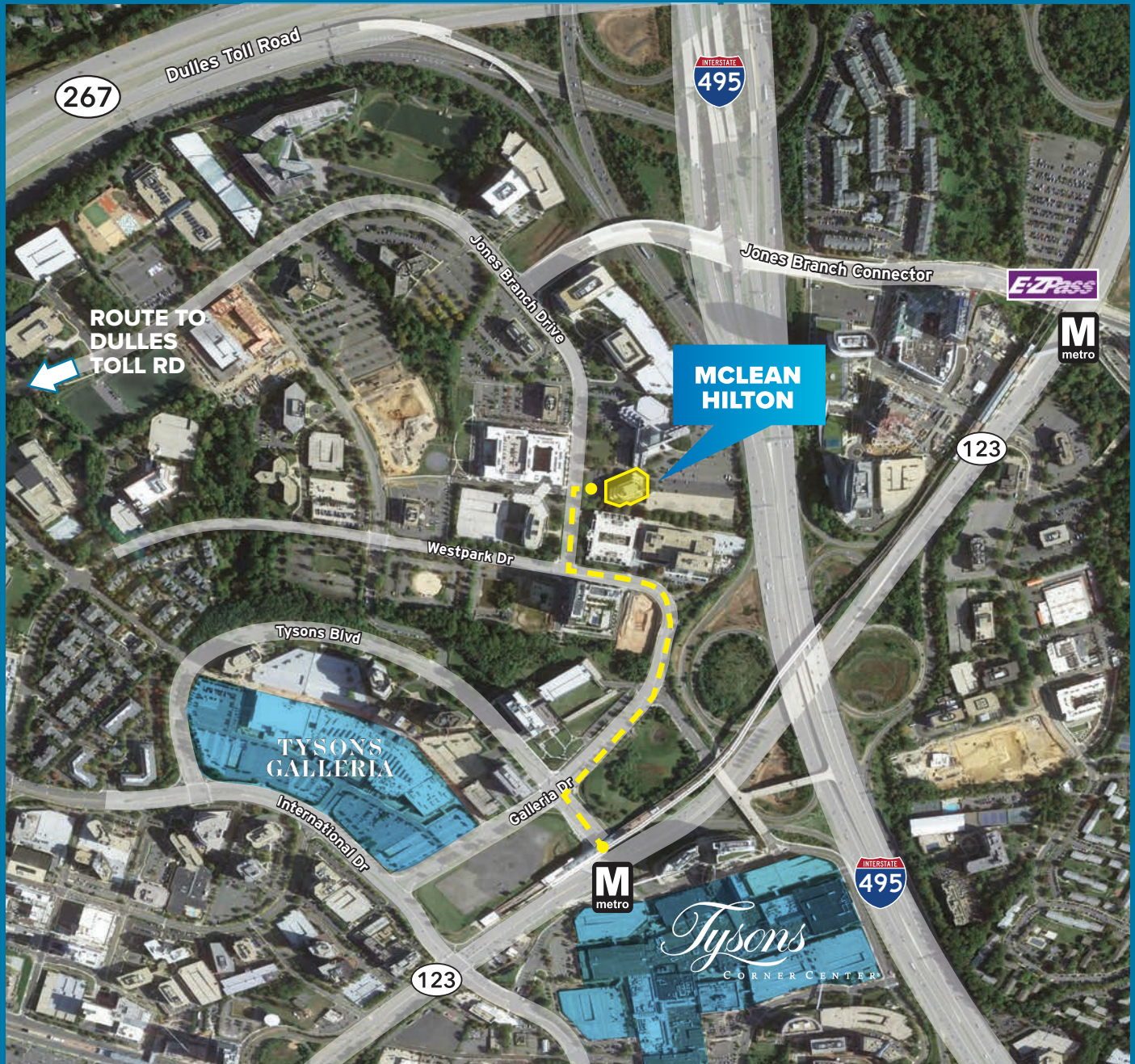
OFFICE SPACE & FEATURES

- » Parking Ratio 3.50 / 1,000 SF
- » Walkable to Tysons Corner Station Metro
- » Direct access to I-495, Route 123, and Dulles Toll Road
- » Accessible to I-495 E-ZPass Entrance/Exit and Jones Branch Connector
- » Directly adjacent to McLean Hilton Hotel
- » Close Proximity to the Social Food Court



AMENITIES & LOCATION

Instant access to Dulles Toll Road and I-495



CAVA
Mezze Grill

Eddie V's
PRIME SEAFOOD

&pizza

sweetgreen

SHAKE SHACK

SUBWAY

Panera
BREAD

Earls
KITCHEN + BAR

MAGGIANO'S
LITTLE ITALY

The Cheesecake
Factory



THE FOUNDING
FARMERS

2ND FLOOR

SUITE 205: 641 SF

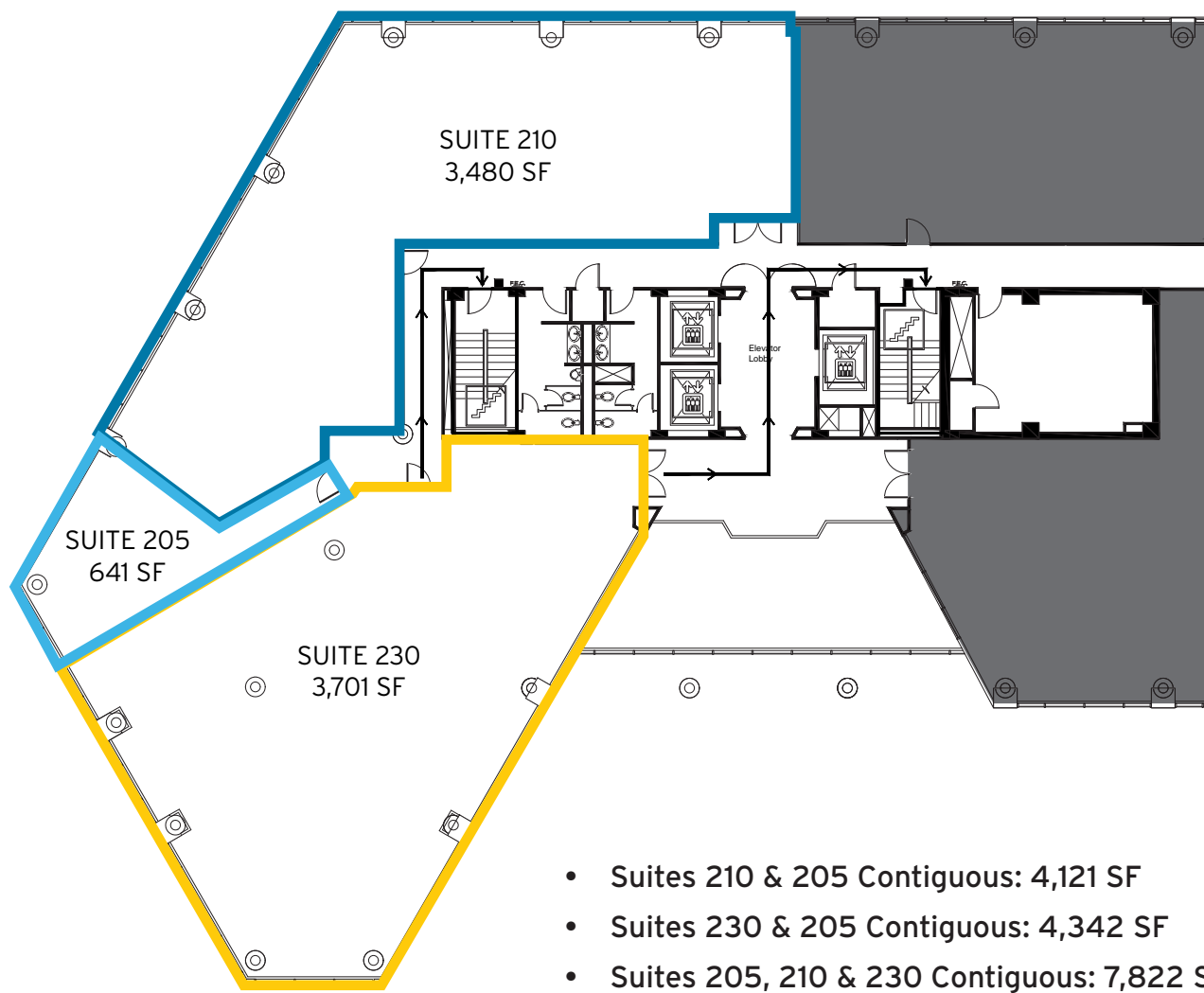
Available Immediately

SUITE 210: 3,480 SF

Available Immediately

SUITE 230: 3,701 SF

Available Immediately

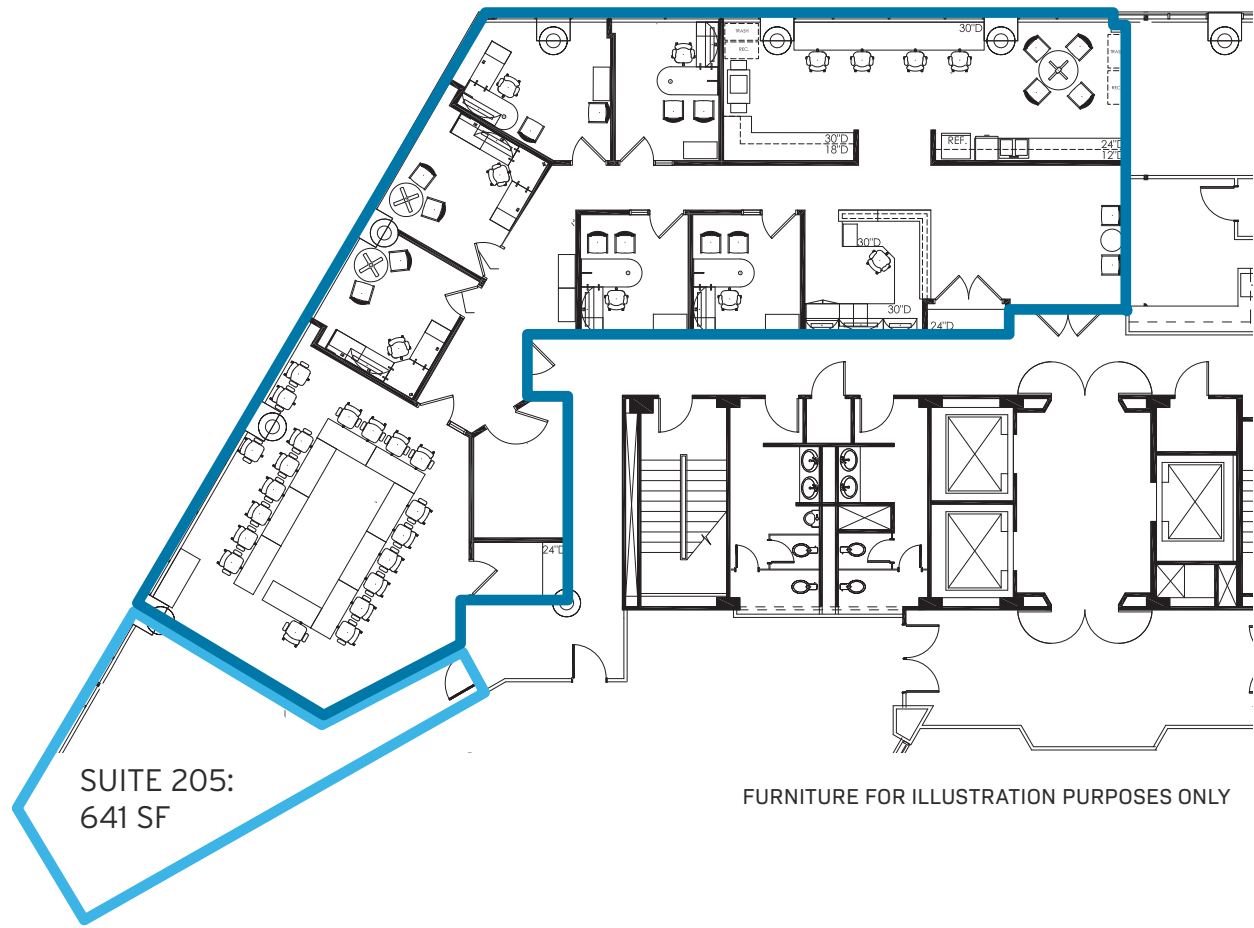


2ND FLOOR

SUITE 210: 3,480 SF

Available Immediately

- Glass Double Door Elevator Lobby Entrance
- Tremendous Window line
- Kitchen
- Large Conference Room or Open Area
- Contiguous With Suite 205 (641 SF) Totaling 4,121 SF

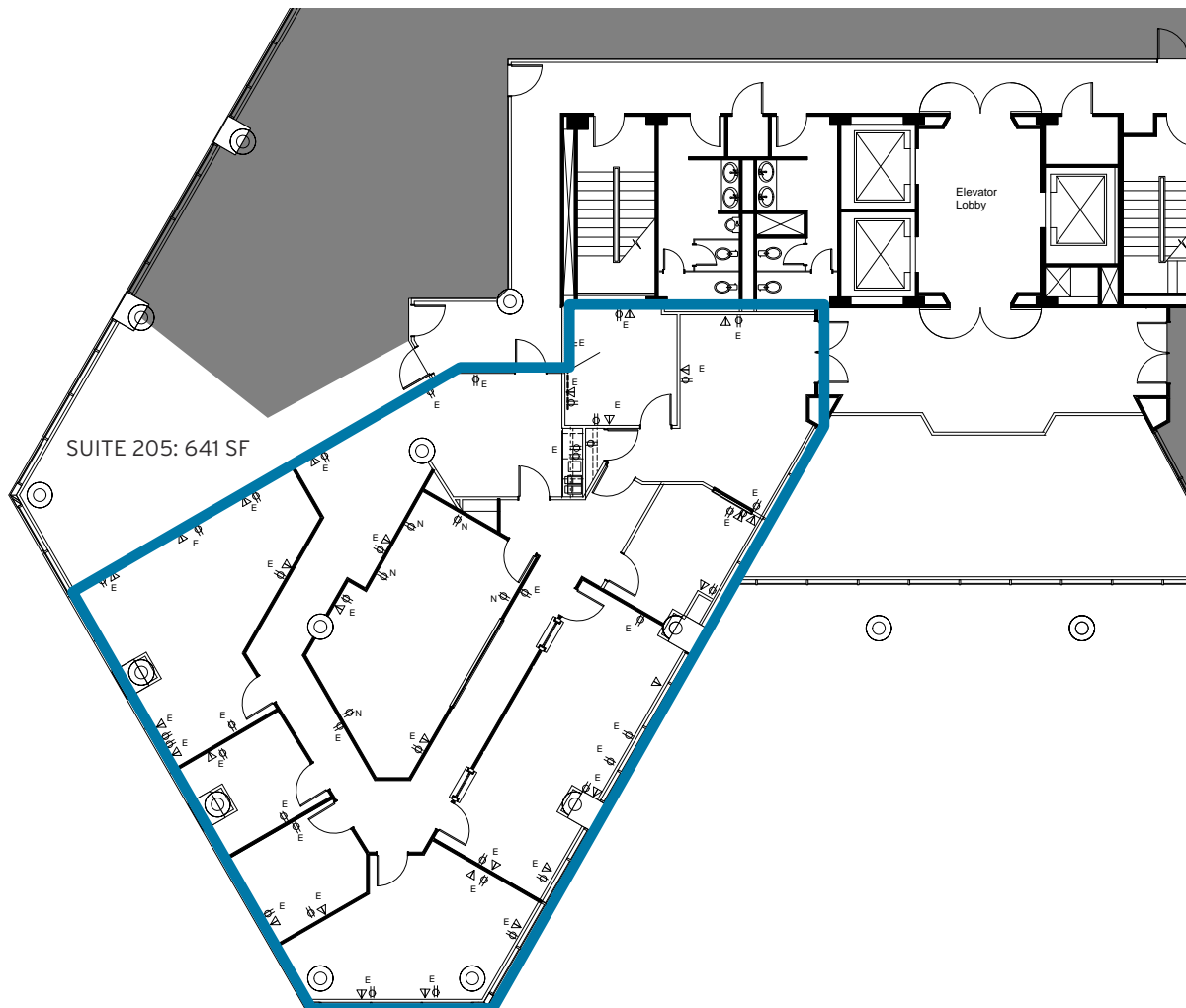


2ND FLOOR

SUITE 230: 3,701 SF

Available Immediately

- Glass Double Door Entrance
- Tremendous Window line
- Overlooks 2 Story Building Lobby
- Large Conference Room
- Contiguous with Suite 205 (641 SF) Totaling 4,342 SF

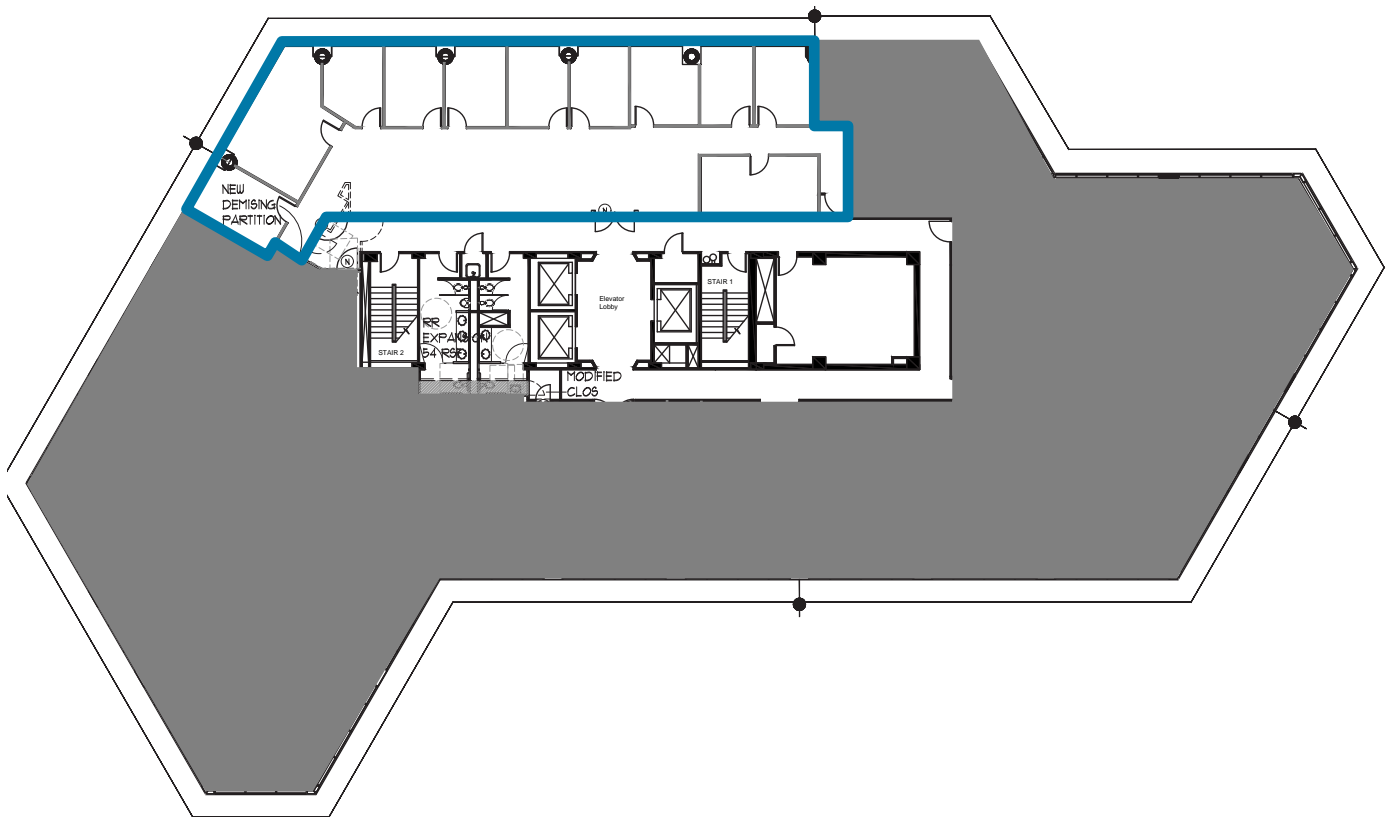


5TH FLOOR

SUITE 530: 3,517 SF

Available Immediately

- Prime Elevator Lobby Exposure
- Office Intensive

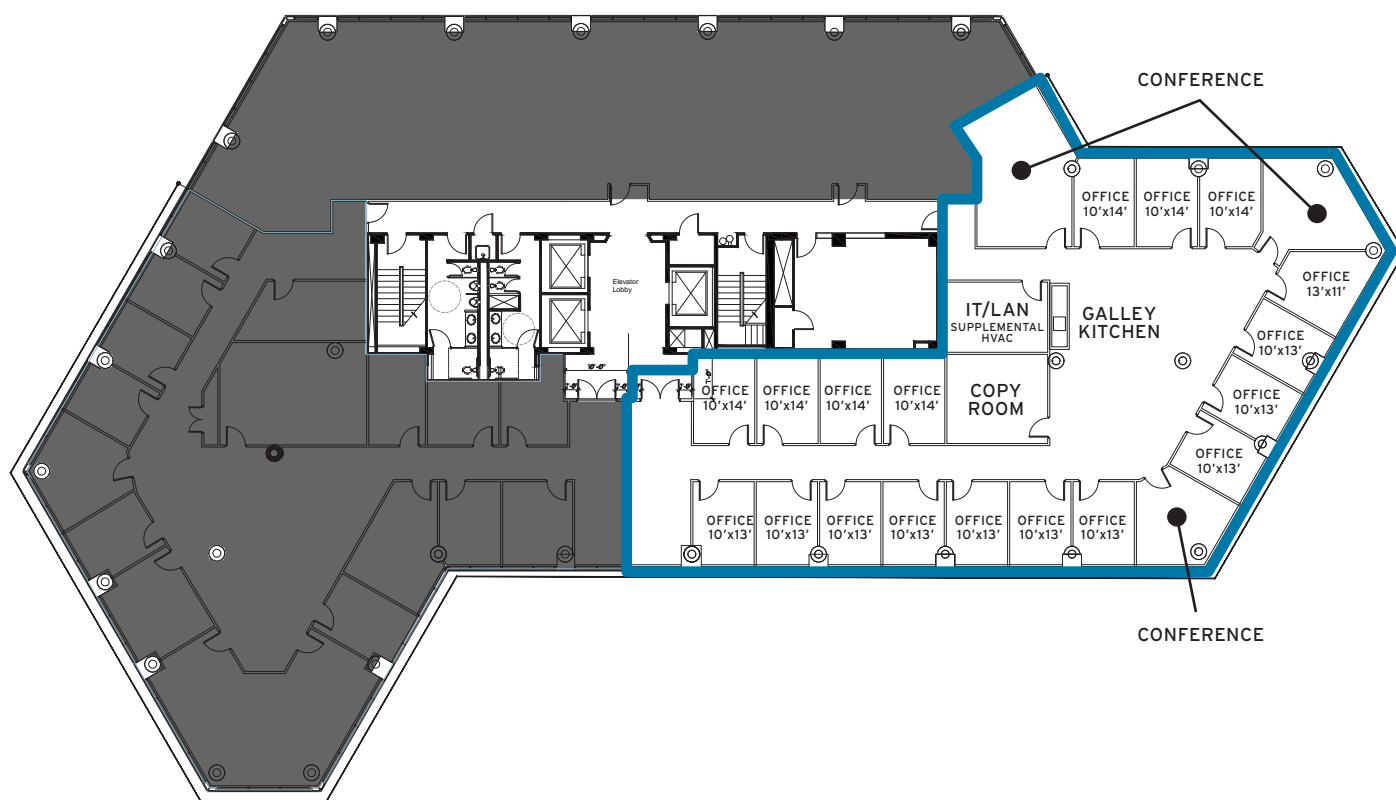


6TH FLOOR

SUITE 600: 6,676 SF

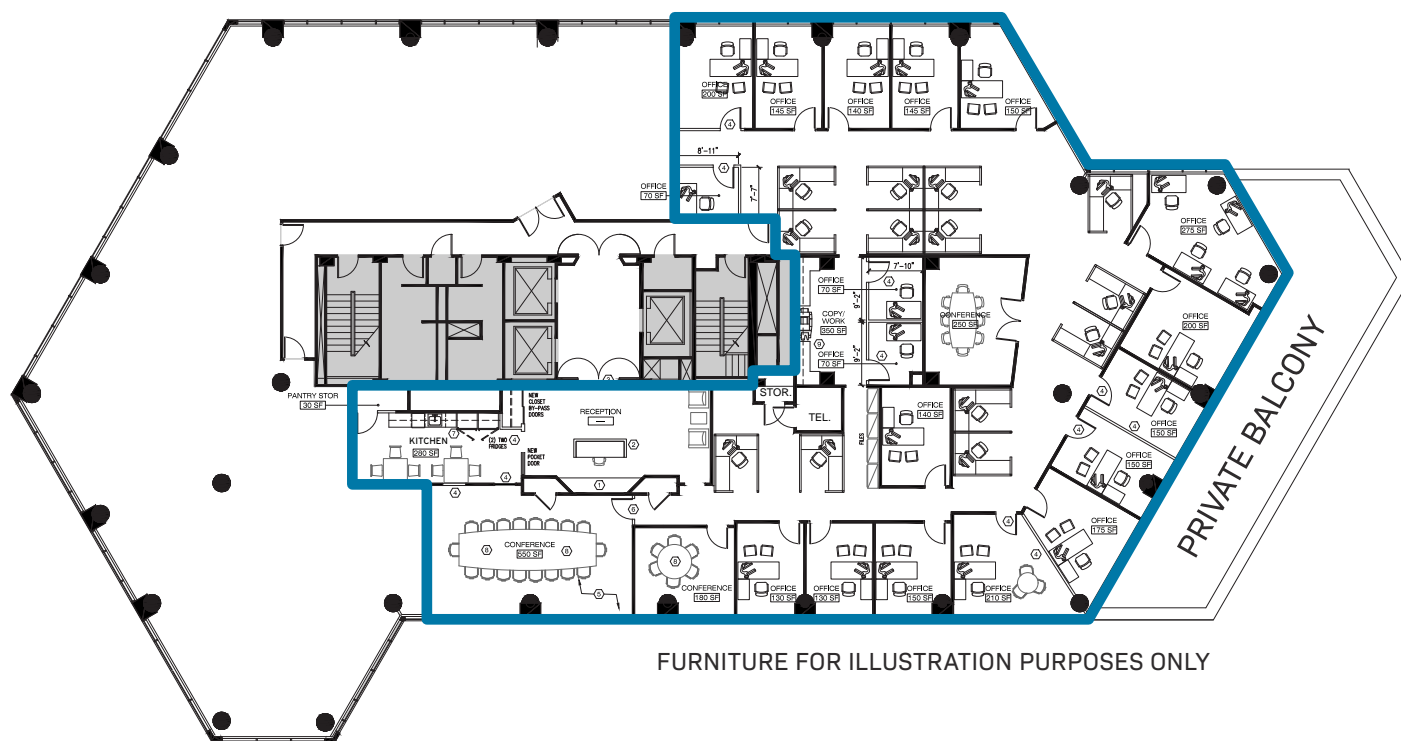
Available Immediately

- Glass Door Elevator Lobby Entrance
- Office Intensive with Tremendous Window line
- Kitchen Galley
- Supplemental HVAC IT/LAN Room
- Various Conference Rooms
- 14 Windowed Offices



Available Immediately

- Double Door Elevator Lobby Entrance
- Multiple Conference Rooms
- Pantry
- Accessible Private Balcony
- Office Intensive with Tremendous Windowline



703.749.9464

703.749.9483

703.749.9462

bernard.mckeever@transwestern.com