

W
S
A
E
B
S
S



ZACUTO GROUP
COMMERCIAL REAL ESTATE



400 CORPORATE POINTE
Culver City

SUBLEASE

400 CORPORATE POINTE,
SUITE 700
CULVER CITY, CA 90230

SUITE 700

12,351 SF

TERM

Through 9/30/25

ASKING RATE

\$2.00/SF FSG

PARKING

3/1000

- Light + bright creative style space with open views
- 15 private glass offices
- 2 Large conference room
- Open row/bullpen seating
- Kitchen + coffee lounge
- Open flex space to be used as bullpen offices or production area

LISTING TEAM



JAKE ZACUTO

Managing Director
310.469.9012

jake@zacutogroup.com
BRE #01377441

LEOR BINSHTOCK

Executive Vice President
310.469.9014

leor@zacutogroup.com
BRE #01773798

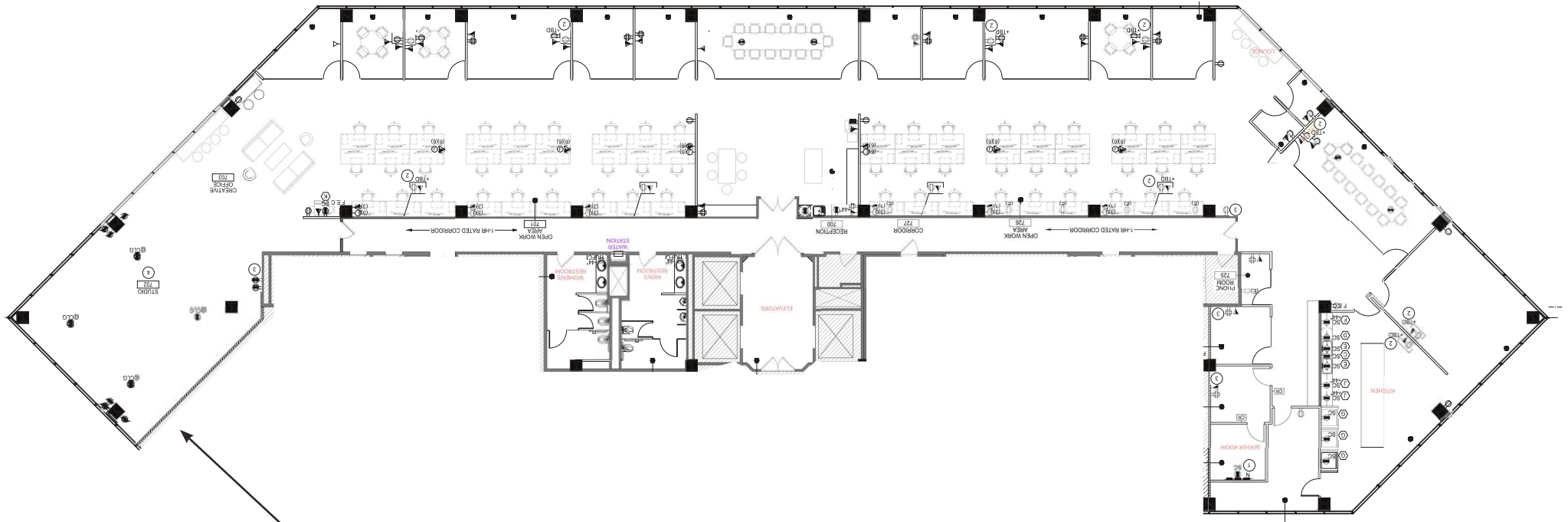


SUBLEASE

400 CORPORATE POINTE WALK, SUITE 700, CULVER CITY, CA 90230

FLOOR PLAN

12,351 SF AVAILABLE



CORNER SPACE CAN FUNCTION AS OPEN OFFICE SPACE OR PRODUCTION AREA*

**Green screen can be made available for use*



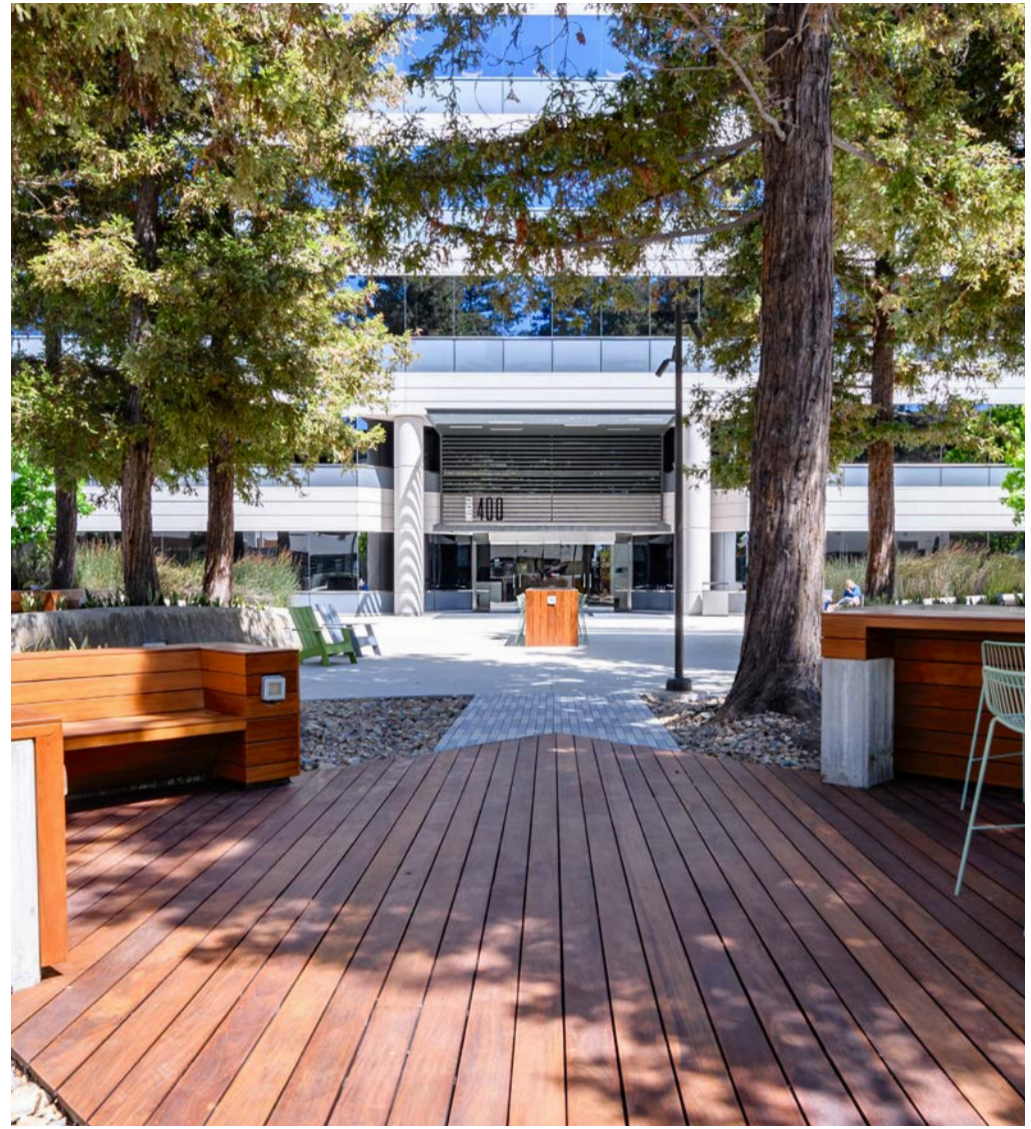
400 CORPORATE POINTE
Culver City

**CREATIVE
STYLE
INTERIORS**



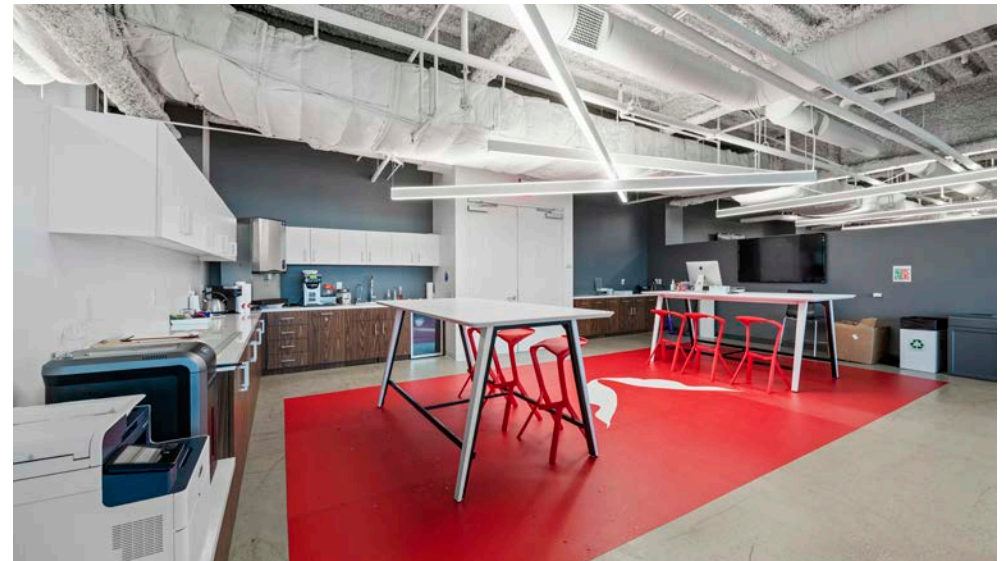
SUBLEASE

400 CORPORATE POINTE WALK, SUITE 700, CULVER CITY, CA 90230



SUBLEASE

400 CORPORATE POINTE WALK, SUITE 700, CULVER CITY, CA 90230



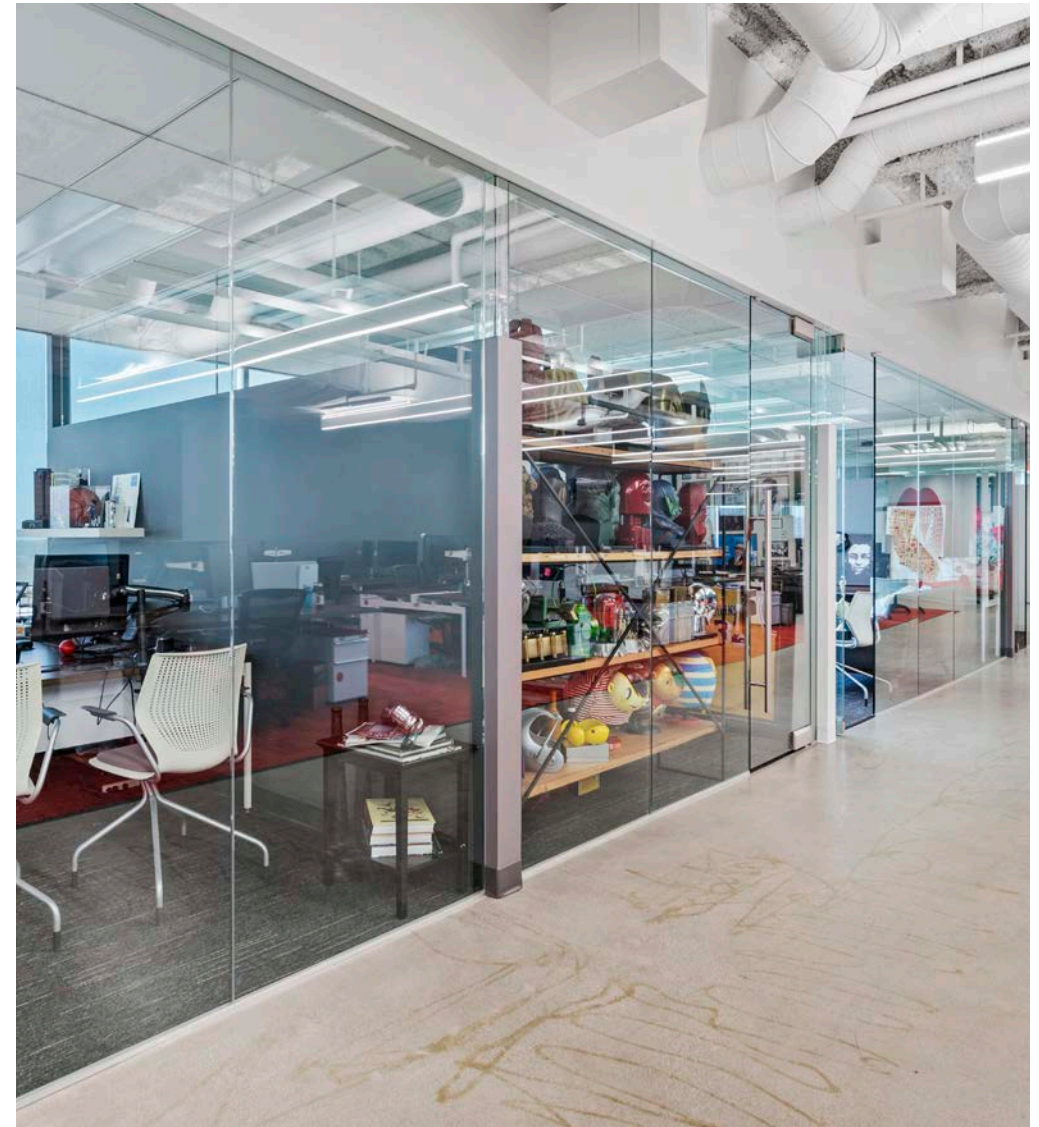
400 CORPORATE POINTE
Culver City

**OPEN
SKYLINE
VIEWS**



SUBLEASE

400 CORPORATE POINTE WALK, SUITE 700, CULVER CITY, CA 90230



400 CORPORATE POINTE
Culver City

**MULTIPLE
COMMON
SPACES**



400 CORPORATE POINTE
Culver City

MODERN &
REFINED
DESIGN

OBSERVATORY

400
CORPORATE POINTE
Culver City

INGLEWOOD

SoFi Stadium

MARINA DEL REY

TikTok

OMNIA MEDIA

CRITICAL CONTENT

Westfield

BECINE



SLAUSON AVE

BRISTOL PARKWAY

NortonLifeLock



400

CORPORATE POINTE
Culver City



JAKE ZACUTO

Managing Director

310.469.9012

jake@zacutogroup.com

BRE #01377441

LEOR BINSHTOCK

Executive Vice President

310.469.9014

leor@zacutogroup.com

BRE #01773798

No warranty, express or implied, is made as to the accuracy of the information contained herein. This information is submitted subject to errors, omissions, change of price, rental or other conditions, withdrawal without notice. All parties who receive this material should not rely on it, but should use it as a starting point of analysis, and should independently confirm the accuracy of the information contained herein through a due diligence review of the books, records, files and documents that constitute reliable sources of the information described herein. Logos and images are for identification purposes only and may be trademarks of their respective companies. All terms provided are approximate. Sublease to verify. 7/2024

ZACUTOGROUP.COM | 310.469.9300

