

# FOR LEASE

- **Unit 208**  
**1,926 +/- S.F.**
- **\$29.75 per S.F. plus**  
**electric and cleaning**
- **Large comfortable**  
**waiting, reception &**  
**admin area**
- **Ample FREE parking**
- **3 Exam rooms,**  
**procedure room and**  
**monitor**
- **2 Doctor's offices**
- **Breakroom, ADA**  
**bathroom & lab rooms**

***Class A***  
***Ready-to-Occupy***  
***Medical Space!!***

## **“CRYSTAL ROCK PLAZA”**

**19785 Crystal Rock Drive**  
**Germantown, MD 20874**



***Join a number of reputable medical professionals***  
***in this Class A, 4-star office condo building.***

***Freshly painted and professionally cleaned!***

*Call for more information or to see the space:*

**301.961.9696**

**Rick Kelly - Ext. 210**

**rkelly@amrcommercial.com**

**Zach Dubin - Ext. 213**

**zdubin@amrcommercial.com**

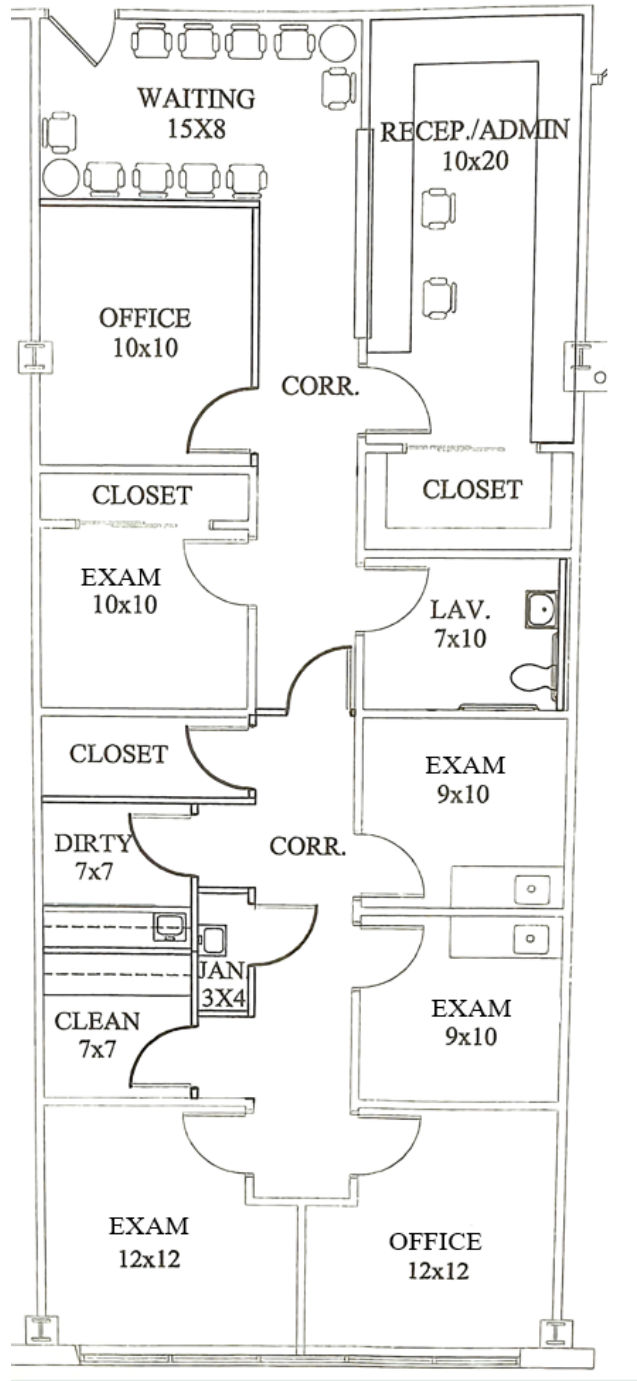
Although all information furnished is from sources we deem reliable, such information has not been verified and no express representation is made, nor is any to be implied, as to the accuracy thereof, and it is submitted subject to errors, omissions, changes of price/rental or other conditions prior to sale or lease, and subject to withdrawal without notice.



**ALEXANDER, MONTROSE, RITTENBERG**  
**Commercial Real Estate Brokerage**  
*Est. 1994*

*Celebrating*  
**31**  
*Years*  
**1994-2025**

**Unit 208**  
**1,926 +/- S.F.**



NOT TO SCALE | MEASUREMENTS APPROXIMATE

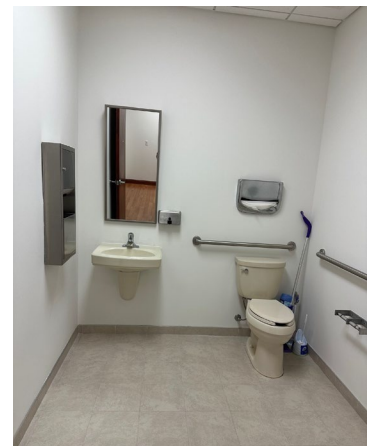
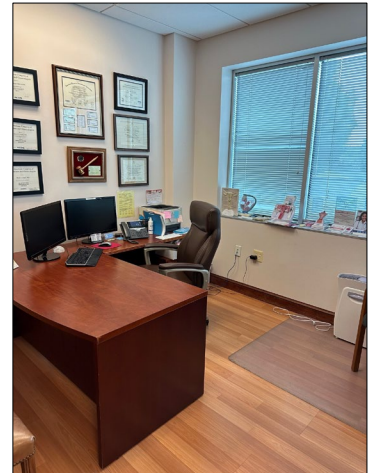
Although all information furnished is from sources we deem reliable, such information has not been verified and no express representation is made, nor is any to be implied, as to the accuracy thereof, and it is submitted subject to errors, omissions, changes of price/rental or other conditions prior to sale or lease, and subject to withdrawal without notice.



ALEXANDER, MONTROSE, RITTENBERG  
Commercial Real Estate Brokerage  
Est. 1994

*Celebrating*  
**31** *Years*  
1994-2025

**Unit 208**  
**1,926 +/- S.F.**



Although all information furnished is from sources we deem reliable, such information has not been verified and no express representation is made, nor is any to be implied, as to the accuracy thereof, and it is submitted subject to errors, omissions, changes of price/rental or other conditions prior to sale or lease, and subject to withdrawal without notice.



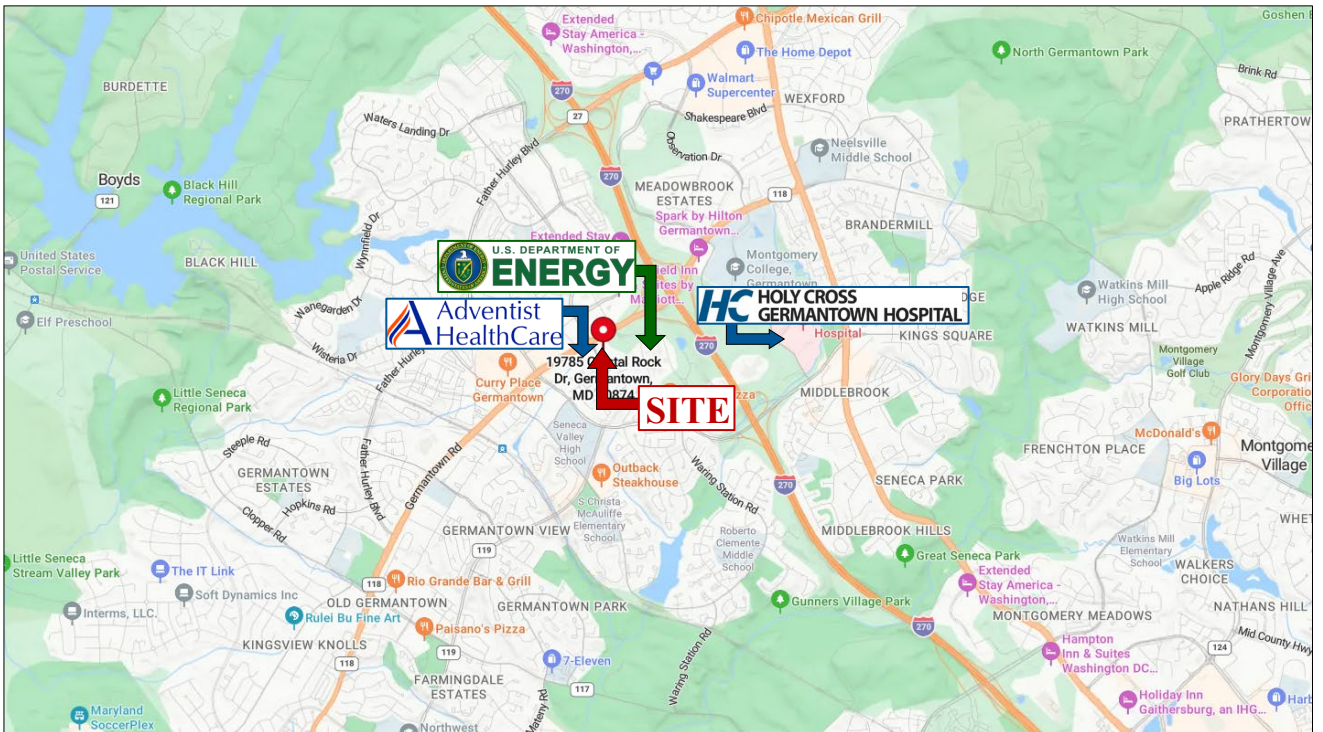
ALEXANDER, MONTROSE, RITTENBERG  
Commercial Real Estate Brokerage  
Est. 1994

*Celebrating*  
**31** *Years*  
1994-2025



Crystal Rock Plaza | 19785 Crystal Rock Drive | Germantown, MD 20874

**Unit 208**  
**1,926 +/- S.F.**



Although all information furnished is from sources we deem reliable, such information has not been verified and no express representation is made, nor is any to be implied, as to the accuracy thereof, and it is submitted subject to errors, omissions, changes of price/rental or other conditions prior to sale or lease, and subject to withdrawal without notice.



ALEXANDER, MONTROSE, RITTENBERG  
Commercial Real Estate Brokerage  
Est. 1994

*Celebrating*  
**31** *Years*  
1994-2025