

GOVERNORS PLACE MEDICAL BUILDING

112 THOMAS JOHNSON DRIVE, FREDERICK, MD 21702



OFFERING SUMMARY

Lease Rate:	Negotiable (NNN)
Building Size:	53,072 SF
Available SF:	2,000 - 26,000 SF
Lot Size:	2.74 Acres
Year Built:	2023

PROPERTY OVERVIEW

The Governors Place Medical Building was designed and built with the modern medical and office businesses in mind. The property has comfortable flow, high speed data, lots of natural light and beautiful landscaping. The suites that are available are new and have never been occupied leaving a one of a kind opportunity to design and build new office suites exactly as they should be to be productive and profitable while being efficient and supportive of a good work environment.

PROPERTY HIGHLIGHTS

- Brand new Class A building
- Flexible suite sizes
- Minimum suite size - 2,000 square feet
- Maximum suite size - 25,000 square feet
- Local and experienced landlord to assist in space design and construction
- High speed data



JUSTIN AUSHERMAN

240.578.4220
JUSTIN@AUSHCO.COM

201 Thomas Johnson Drive Suite 202 | Frederick, MD 21701 | [AUSHCO.COM](https://www.aushco.com)

GOVERNORS PLACE MEDICAL BUILDING

112 THOMAS JOHNSON DRIVE, FREDERICK, MD 21702



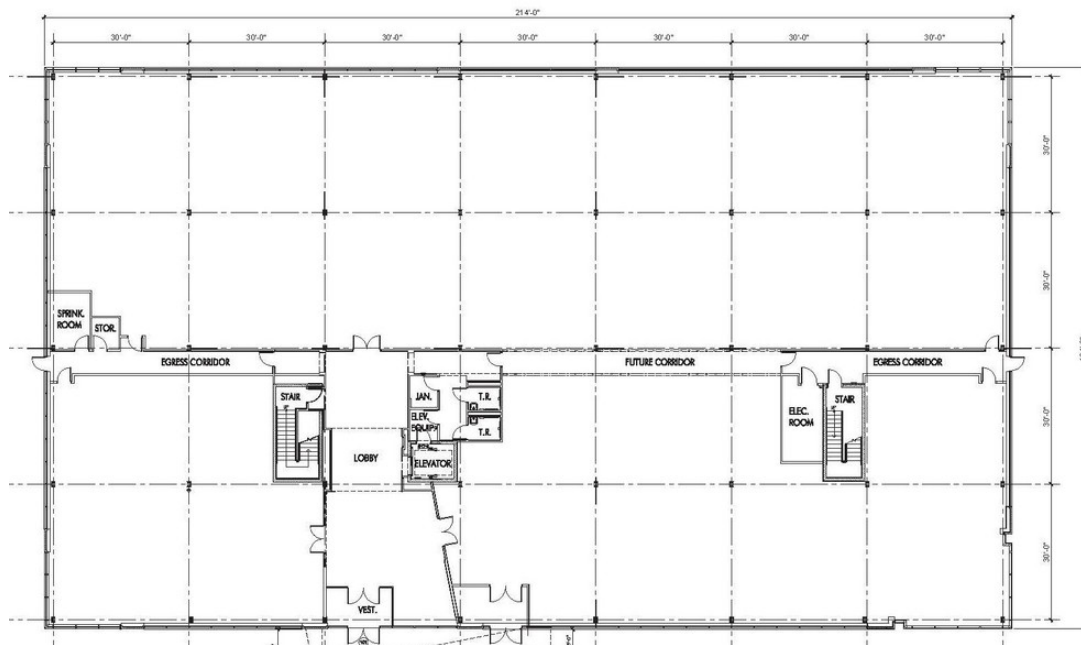
JUSTIN AUSHERMAN

240.578.4220
JUSTIN@AUSHCO.COM

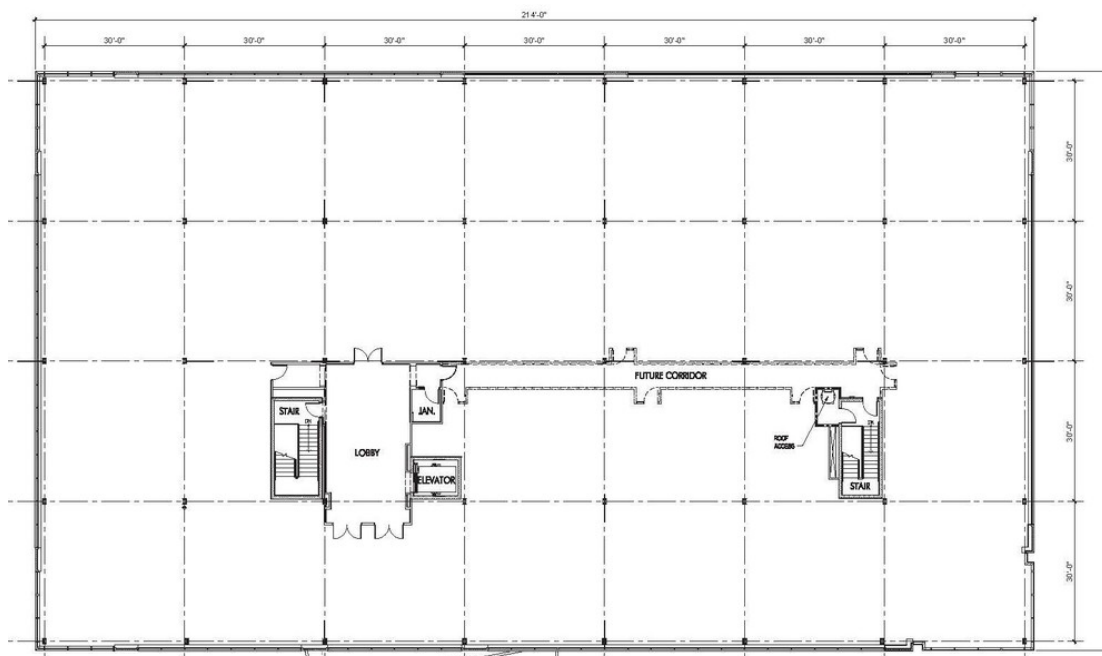
201 Thomas Johnson Drive Suite 202 | Frederick, MD 21701 | AUSHCO.COM

GOVERNORS PLACE MEDICAL BUILDING

112 THOMAS JOHNSON DRIVE, FREDERICK, MD 21702



First Floor



Second Floor



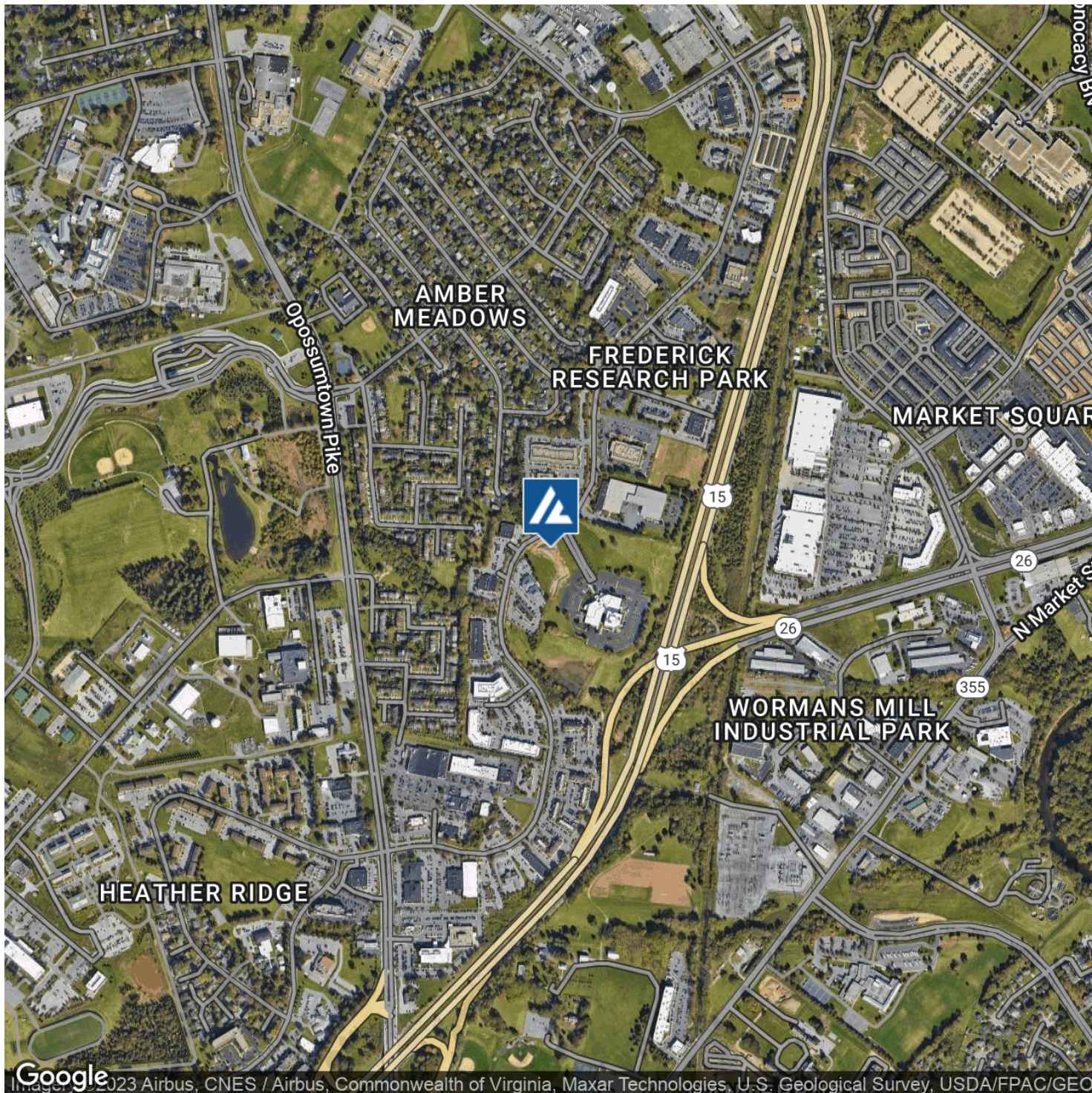
JUSTIN AUSERMAN

240.578.4220
JUSTIN@AUSHCO.COM

201 Thomas Johnson Drive Suite 202 | Frederick, MD 21701 | AUSHCO.COM

GOVERNORS PLACE MEDICAL BUILDING

112 THOMAS JOHNSON DRIVE, FREDERICK, MD 21702



JUSTIN AUSHERMAN

240.578.4220
JUSTIN@AUSHCO.COM

201 Thomas Johnson Drive Suite 202 | Frederick, MD 21701 | [AUSHCO.COM](https://www.aushco.com)