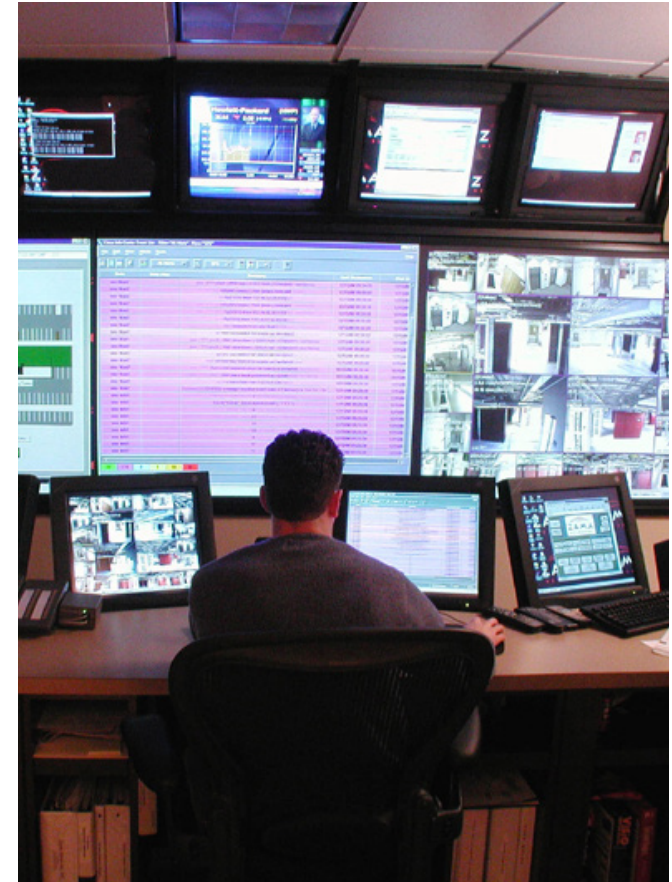


Intergate.West

12101, 12201, 12301, Tukwila Int'l Blvd, Seattle WA 98168

TOTAL AVAILABLE SPACE – 21,591 RSF
BLDG. B | FLOOR 2 - 7,802
BLDG. C | FLOOR 2 - 6,158 | FLOOR 3 - 8,049



**PART OF THE LARGEST PRIVATELY OWNED MULTI-TENANT
DATA CENTER CAMPUS ON THE WEST COAST**



visit us at [sabey.com](https://www.sabey.com)

Joe Sabey
joes@sabey.com
206.281.8700

Clete Casper
cletec@sabey.com
206.277.5229



12201 Tukwila International Blvd. 4th Floor
Seattle, WA 98168

Intergate.West

12101, 12201, 12301, Tukwila Int'l Blvd, Seattle WA 98168

TOTAL AVAILABLE SPACE – 21,591 RSF
BLDG. B | FLOOR 2 - 7,802
BLDG. C | FLOOR 2 - 6,158 | FLOOR 3 - 8,049



Intergate.West is part of Intergate.Seattle, the largest privately owned multi-tenant data center campus on the West coast. Its robust electrical infrastructure, connectivity and floor loading make it an ideal location for data center operations while many features including spectacular views of downtown Seattle, Mount Rainier and the Cascade Mountains, private decks, ample parking – both covered and open-air - make it an attractive office location.

Intergate.West provides excellent access to I-5, I-405, Hwy 99, SR-599 and East Marginal Way. Sea-Tac International Airport is only 3 miles away; Boeing Field is even closer. Downtown Seattle is a mere 12 minute drive from the site. This location also offers quick access to a wide variety of shopping, dining and recreation opportunities in the surrounding area.

**PRIVATE DECKS,
AMPLE PARKING – BOTH
COVERED AND OPEN AIR**

Highlights

- Large power capacity
- Multiple fiber providers
- Floor loading suitable for data centers
- Easy access to all major freeways
- Friendly and professional property management
- Views of downtown Seattle and Mount Rainier with private balconies on each floor



visit us at [sabey.com](https://www.sabey.com)

Joe Sabey
joes@sabey.com
206.281.8700

Clete Casper
cletec@sabey.com
206.277.5229

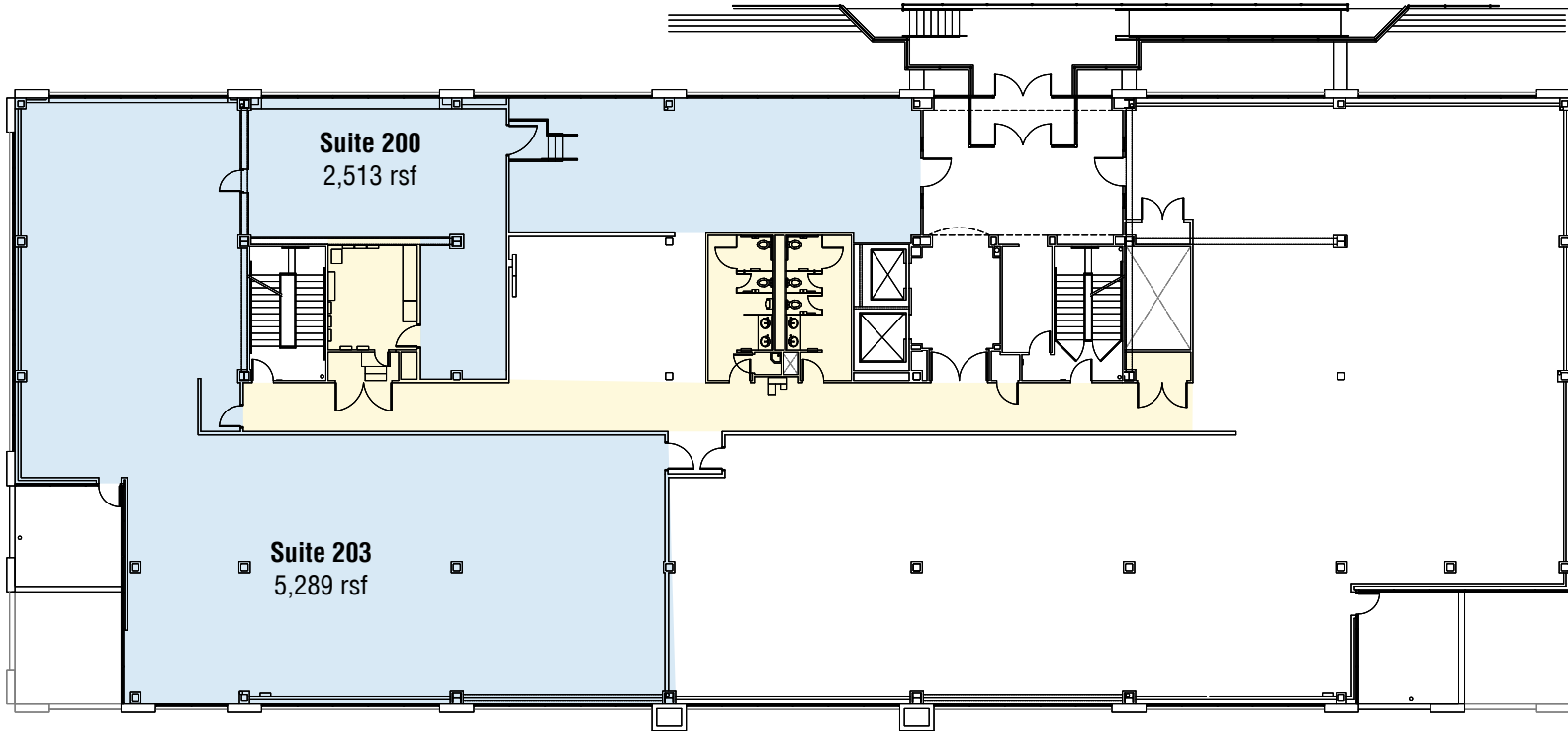


12201 Tukwila International Blvd. 4th Floor
Seattle, WA 98168

Intergate.West

12101, 12201, 12301, Tukwila Int'l Blvd, Seattle WA 98168

TOTAL AVAILABLE SPACE – 21,591 RSF
BLDG. B | FLOOR 2 - 7,802
BLDG. C | FLOOR 2 - 6,158 | FLOOR 3 - 8,049



Building B, Floor 2 | Available space - 7,802 rsf

■ Total Available Space ■ Common Area



visit us at sabey.com

Joe Sabey
joes@sabey.com
206.281.8700

Clete Casper
cletec@sabey.com
206.277.5229

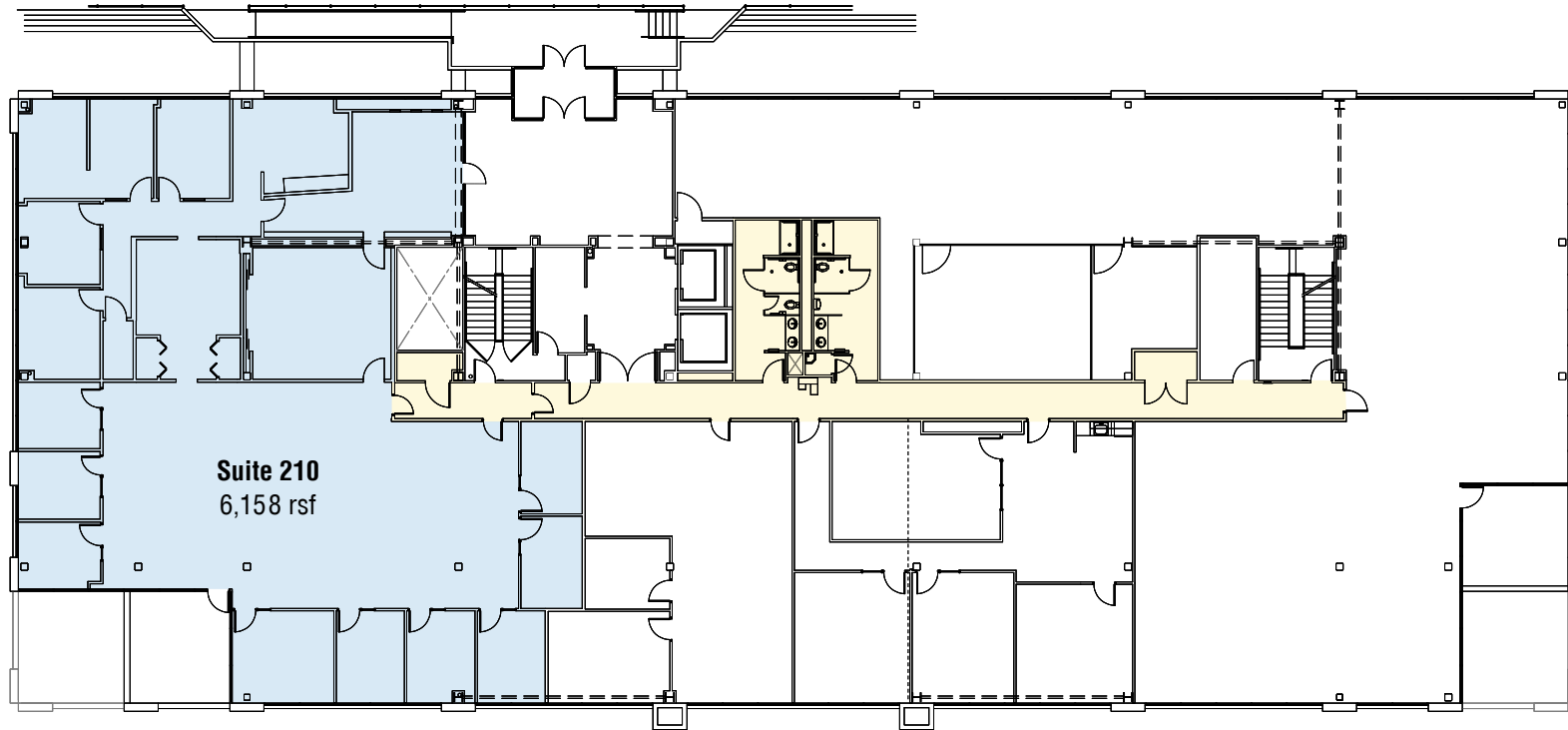


12201 Tukwila International Blvd. 4th Floor
Seattle, WA 98168

Intergate.West

12101, 12201, 12301, Tukwila Int'l Blvd, Seattle WA 98168

TOTAL AVAILABLE SPACE – 21,591 RSF
BLDG. B | FLOOR 2 - 7,802
BLDG. C | FLOOR 2 - 6,158 | FLOOR 3 - 8,049



Building C, Floor 2 | Available space - 6,158 rsf

■ Total Available Space ■ Common Area



visit us at [sabey.com](https://www.sabey.com)

Joe Sabey
joes@sabey.com
206.281.8700

Clete Casper
cletec@sabey.com
206.277.5229

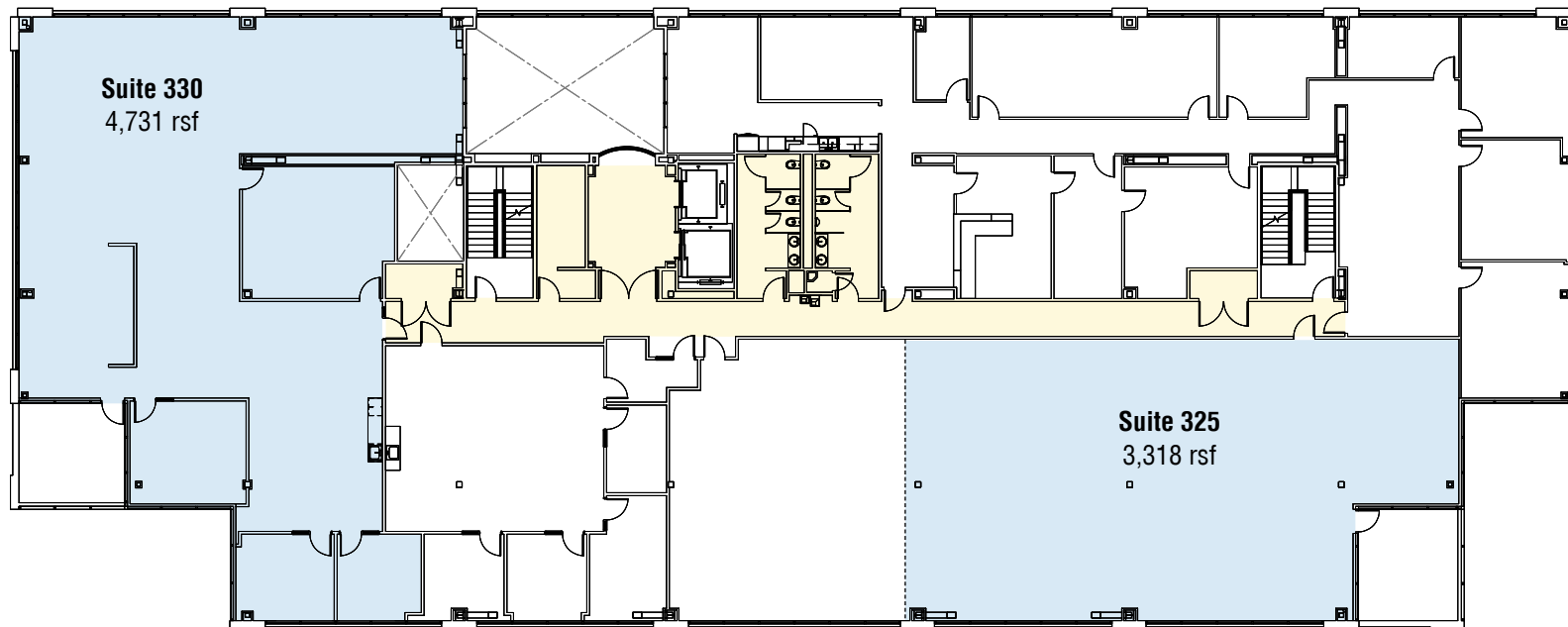


12201 Tukwila International Blvd. 4th Floor
Seattle, WA 98168

Intergate.West

12101, 12201, 12301, Tukwila Int'l Blvd, Seattle WA 98168

TOTAL AVAILABLE SPACE – 21,591 RSF
BLDG. B | FLOOR 2 - 7,802
BLDG. C | FLOOR 2 - 6,158 | FLOOR 3 - 8,049



Building C, Floor 3 | Available space - 8,049 rsf

■ Total Available Space ■ Common Area



visit us at sabey.com

Joe Sabey
joes@sabey.com
206.281.8700

Clete Casper
cletec@sabey.com
206.277.5229



12201 Tukwila International Blvd. 4th Floor
Seattle, WA 98168