

907 WEST ST. PITTSBURGH, PA 15221

# *Columbia on Penn*

UP TO 20,000 SF AVAILABLE  
CLASS A OFFICE SPACE



**Flexible & Affordable Terms**

**Commonwealth**  
COMMERCIAL REAL ESTATE

**412.559.1224**





### AVAILABLE SPACE

**1st Floor** - Up to 15,000 RSF

**2nd Floor** - 4,679 RSF

**3rd Floor** - 2,150 - 3,881 RSF

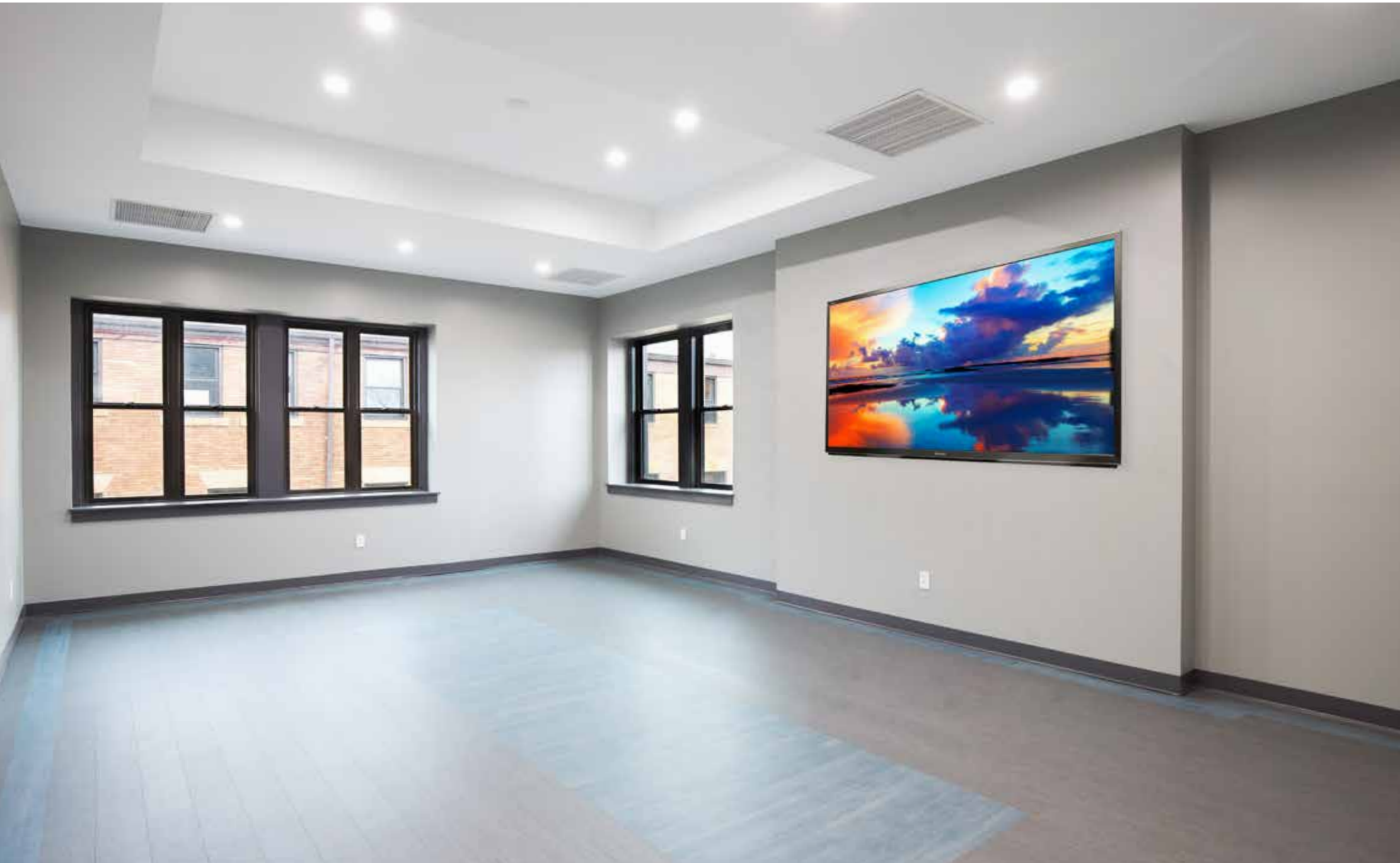
**4th Floor** - Up to 15,000 RSF

**5th Floor** - 7,280 RSF

**500+  
WINDOWS**

**MONUMENT  
SIGNAGE**





<b>Type</b> 3 Star Office	<b>Year Built/Reno</b> 1920/2023
<b>Location</b> Suburban	<b>Tenancy</b> Multi
<b>RBA</b> 94,425 SF	<b>Owner Occup</b> No
<b>Stories</b> 5	<b>Elevators</b> 2
<b>Typical Floor</b> 18,885 SF	<b>Sprinklers</b> Wet
<b>Construction</b> Masonry	<b>Parking</b> 85+



— Lobby and Exterior Enhancements Underway

— Shared Kitchens, Conference Rooms & Meeting Rooms

— Hard ceilings









Flexible and Affordable

Secured Interior & Exterior Bike Parking

Great Rates and Management

Recessed Lighting







Flexible Floor Plans



Tenant Lounge

Attentive Ownership





New Pocket Park and Entrance Renderings

— Improved Courtyard & landscaping

— 24/7 Video Monitoring Security

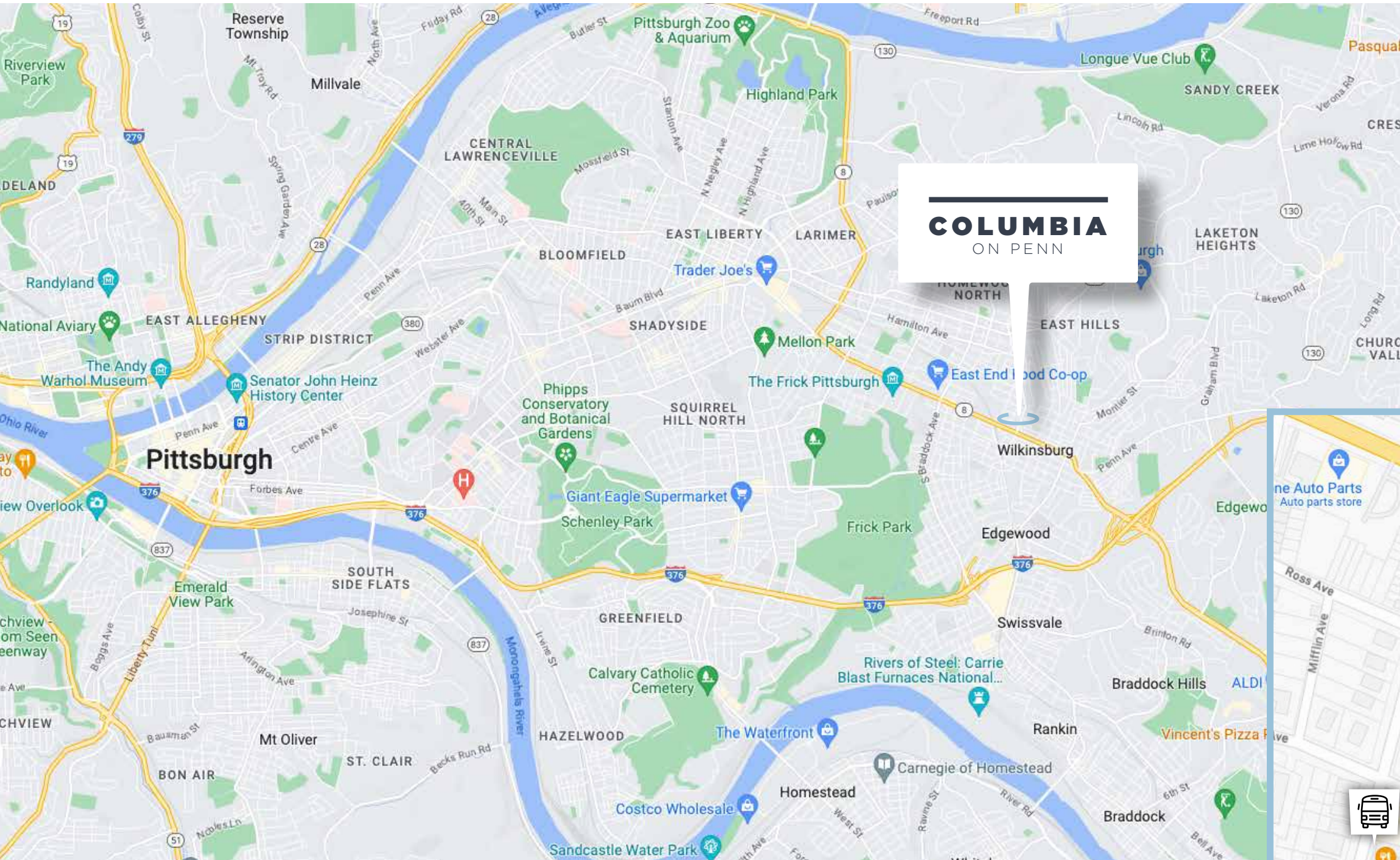
— Turn-key Business Solutions



## ABUNDANT NATURAL LIGHTING & FREE PARKING

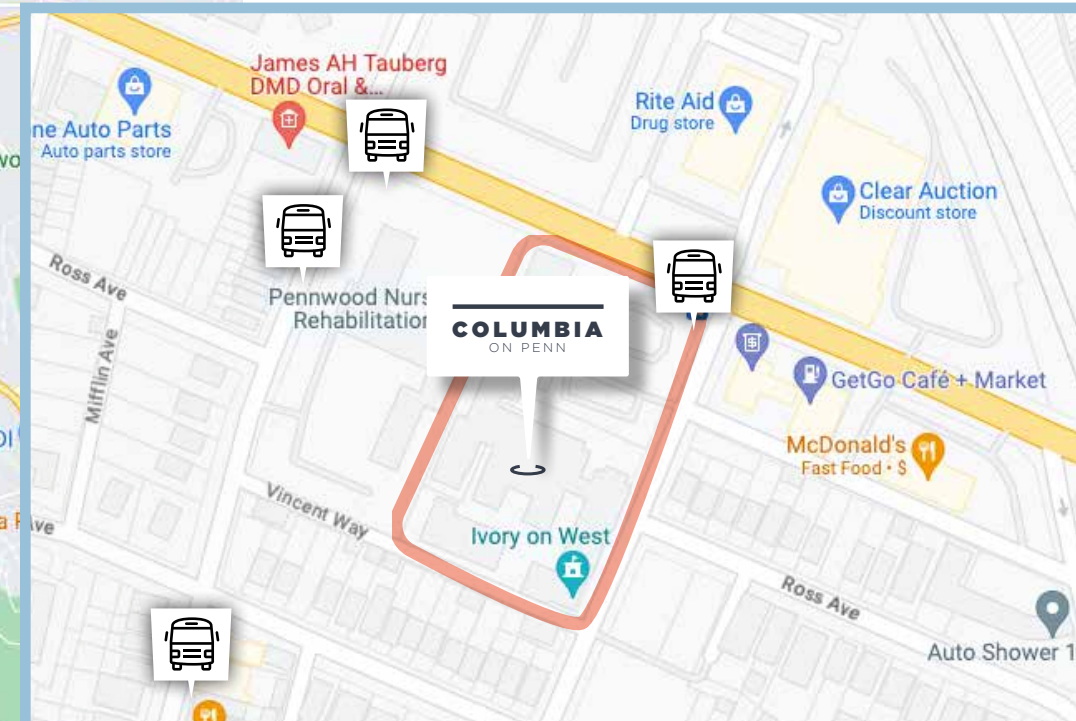






Minutes to Parkway East (I-376) and Downtown Pittsburgh

Easy access to public transit





## Wilkesburg, PA

Wilkesburg, PA is an incorporated borough located in Allegheny County east from Harrison Township with approximately fifteen thousand people living there. Wilkesburg offers its citizens many outdoor venues like the Frick Park allowing locals or tourists the perfect opportunity to appreciate nature all year round! Furthermore there are multiple eateries and stores within this area giving it a great spot to explore what this region has to offer!

## Demographics

	2 MILES	5 MILES	10 MILES
POPULATION	61,975	299,570	828,373
HOUSEHOLDS	29,118	137,331	372,087
DAYTIME EMPLOYEES	20,253	261,827	591,392
AVG HH INCOME	\$52,760	\$52,063	\$59,928





# Thank You!

NO WARRANTY OR REPRESENTATION, EXPRESS OR IMPLIED, IS MADE AS TO THE ACCURACY OF THE INFORMATION CONTAINED HEREIN, AND THE SAME IS SUBMITTED SUBJECT TO ERRORS, OMISSIONS, CHANGE OF PRICE, RENTAL OR OTHER CONDITIONS, PRIOR SALE, LEASE OR FINANCING, OR WITHDRAWAL WITHOUT NOTICE, AND OF ANY SPECIAL LISTING CONDITIONS IMPOSED BY OUR PRINCIPALS NO WARRANTIES OR REPRESENTATIONS ARE MADE AS TO THE CONDITION OF THE PROPERTY OR ANY HAZARDS CONTAINED THEREIN ARE ANY TO BE IMPLIED.



## Team Contacts

**Nicole DeLuca**  
Managing Partner

[NDeluca@CommonwealthCRE.com](mailto:NDeluca@CommonwealthCRE.com)

📞 412.937.1925 x340

📞 412.287.9571



**JR Yocco**  
Director of Brokerage & Development

[JRYocco@CommonwealthCRE.com](mailto:JRYocco@CommonwealthCRE.com)

📞 412.937.1925 x280

📞 412.559.1224