

FOR LEASE | OFFICE SPACE

75 Market Street | Portland, ME



## PROFESSIONAL OLD PORT OFFICE SPACES

- Professional office suites now available in varying sizes from 1,483± SF up to 4,968± SF
- Excellent Old Port location at the corner of Market and Middle Streets across from Tommy's Park
- Close to parking, restaurants, retail, and courthouse

**LEASE RATE: \$24.75/SF MG**



PETER HARRINGTON

207.772.0088 D

207.318.8888 C

[peter@malonecb.com](mailto:peter@malonecb.com)

MALONE COMMERCIAL BROKERS

5 Moulton Street • Suite 3

Portland, ME 04101

207.772.2422 • [malonecb.com](http://malonecb.com)



# PROPERTY SUMMARY

75 Market Street | Portland, ME



**OWNER:** Wholly Cow LLC

**DEED:** Book 24614, Page 255

**ASSESSOR:** Map 28, Block K, Lots 3-6

**LOT SIZE:** 0.234± AC

**BUILDING SIZE:** 48,912± SF

**SPACE SIZE:**

Suite 203*:	2,801± SF
Suite 204:	939± SF
Suite 211:	2,167± SF
Suite 301:	1,964± SF
Suite 303:	2,168± SF
Suite 305:	2,866± SF
Suite 402:	1,483± SF
Suite 403:	1,770± SF
Suite 401/404:	4,859± SF

**YEAR BUILT:** 1868

**STORIES:** Six (6)

**CONSTRUCTION:** Brick & stone

**ROOF:** Flat

**FLOORING:** Carpet

**CEILING HEIGHT:** 10'-14'

**LIGHTING:** Parabolic lighting fixtures throughout

**HVAC:** Heat Pump with REME Halos for improved air quality

**RESTROOM:** Two (2) in-common on each floor

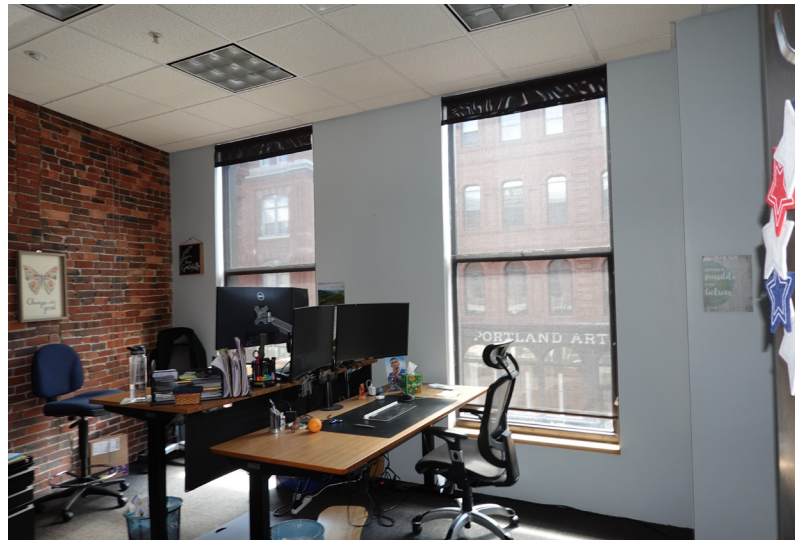
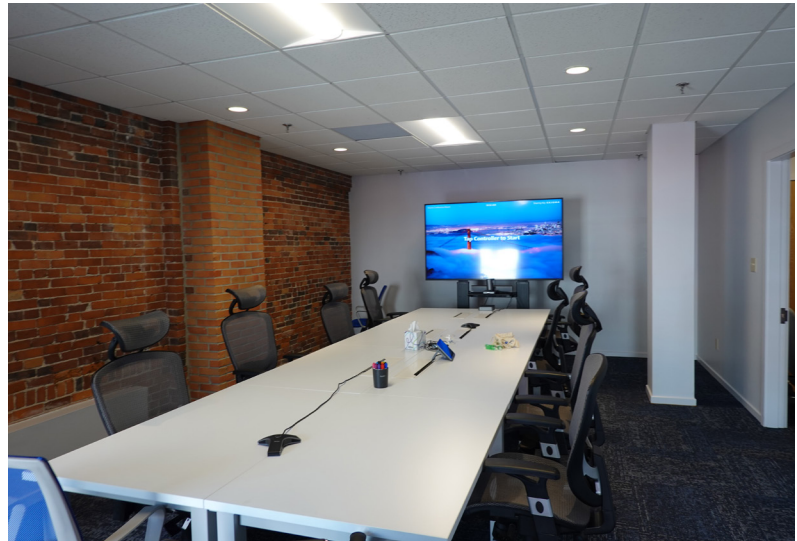
**SPRINKLER:** Wet

**ELEVATOR:** Two (2)

**SIGNAGE:** Lobby directory

**ZONING:** B3 - Downtown Business  
PAD - Pedestrian Activities  
Overlay District

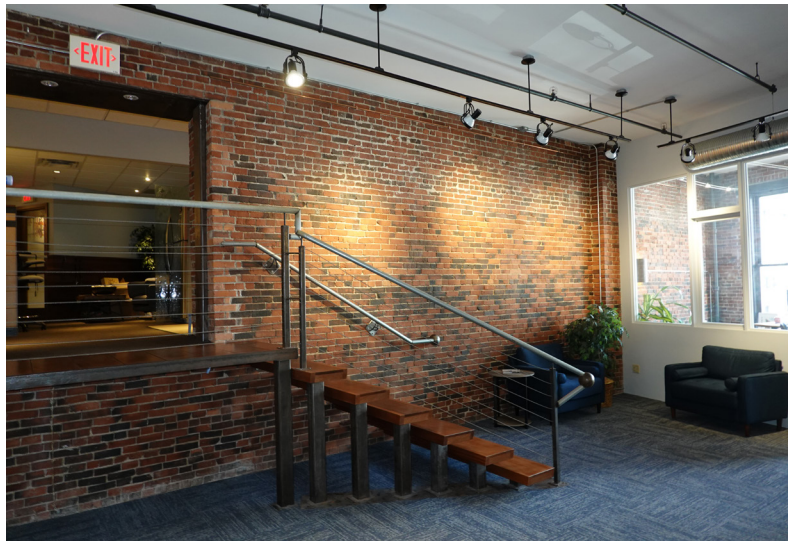
\*Suite 203 and Suite 211 are currently combined for a total of 4,968± SF





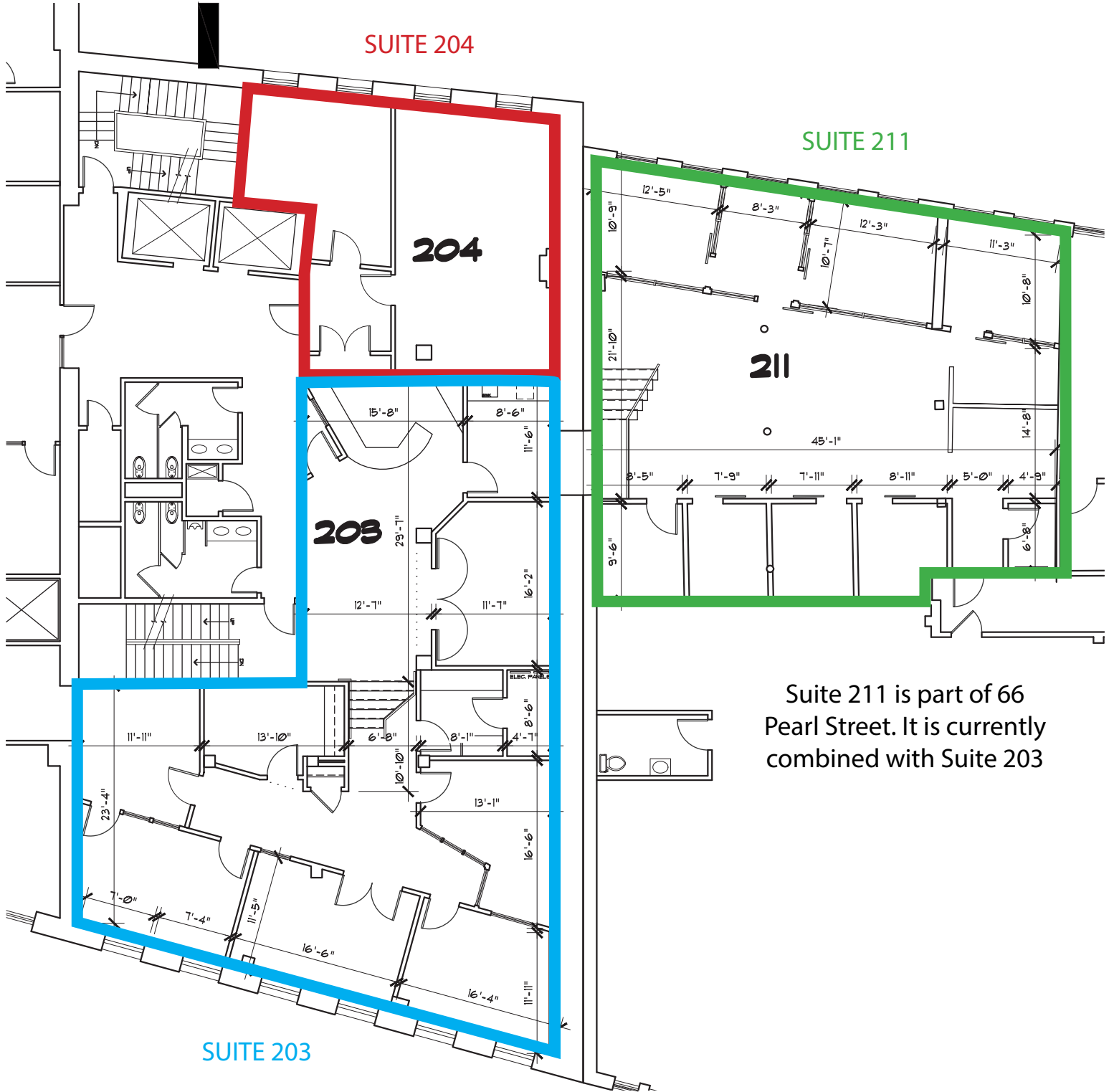
# SECOND FLOOR PHOTOS

75 Market Street | Portland, ME



# SECOND FLOOR PLAN

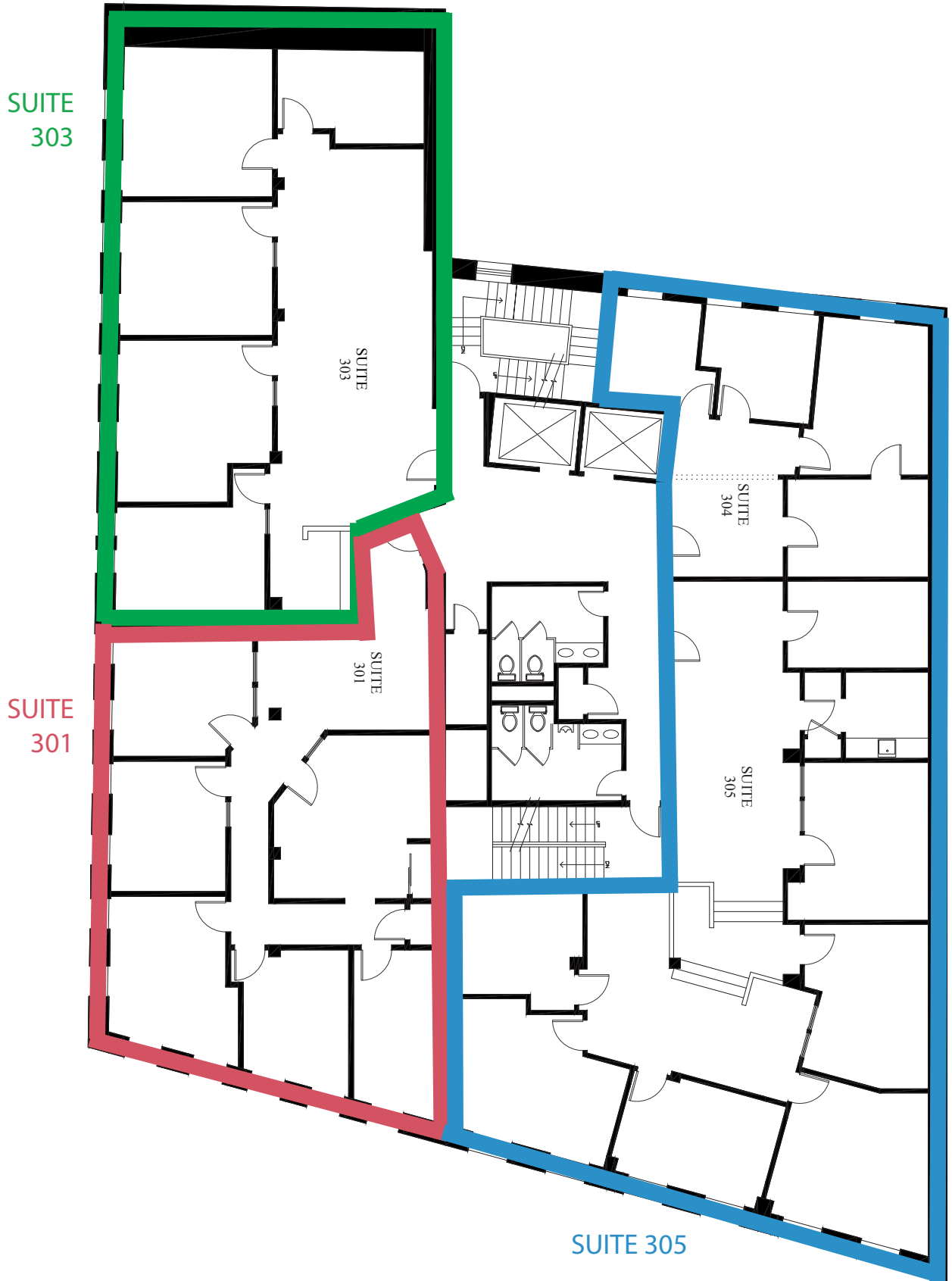
75 Market Street | Portland, ME



Suite 211 is part of 66 Pearl Street. It is currently combined with Suite 203

# THIRD FLOOR PLAN

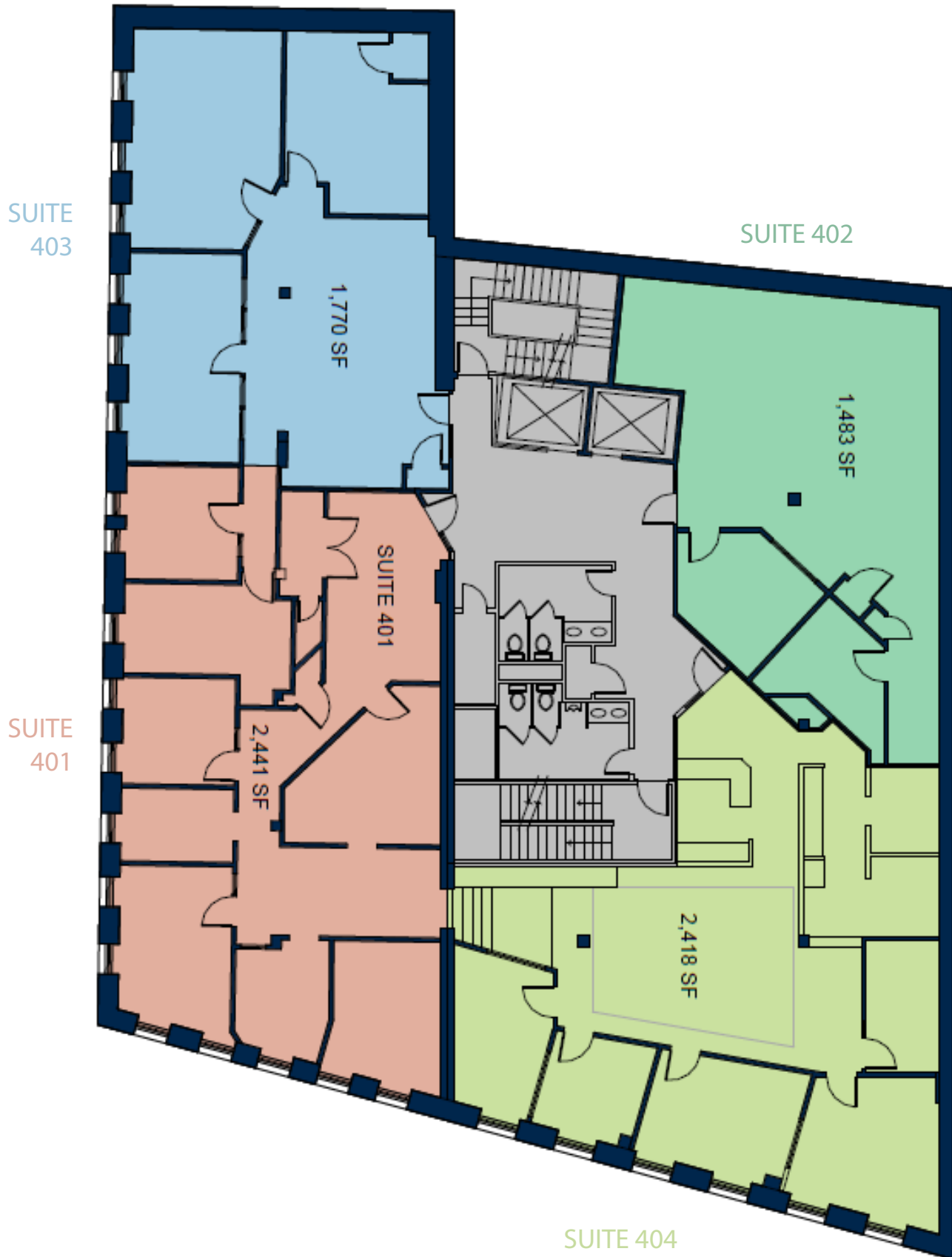
75 Market Street | Portland, ME





# FOURTH FLOOR PLAN

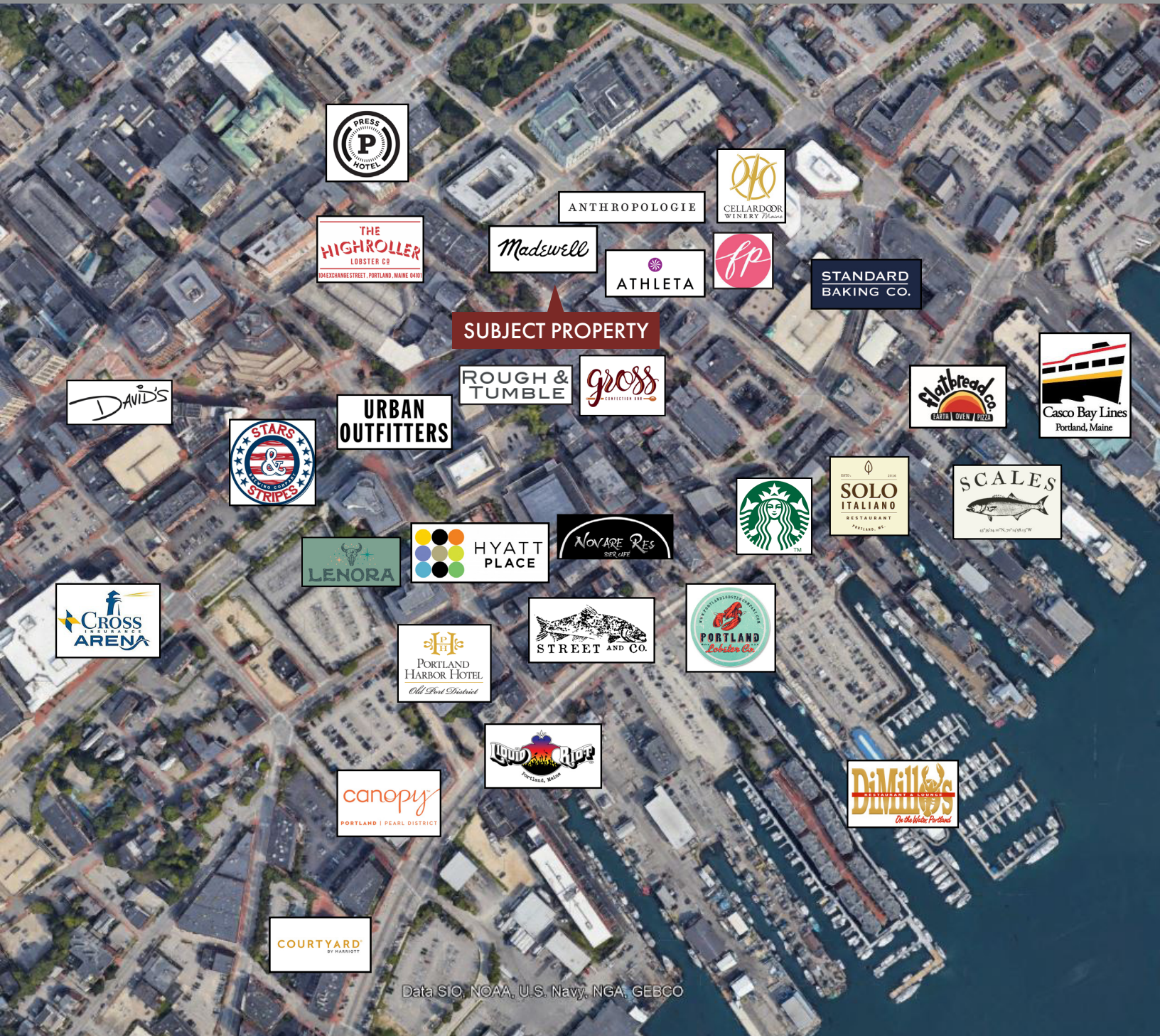
75 Market Street | Portland, ME





# FOR LEASE | OFFICE SPACE

75 Market Street | Portland, ME



Data SIO, NOAA, U.S. Navy, NGA, GEBCO

This document has been prepared by Malone Commercial Brokers for advertising and general information only. Malone Commercial Brokers makes no guarantees, representations or warranties of any kind, expressed or implied, regarding, but not limited to, warranties of content, accuracy, and reliability. Any interested party should undertake their own inquiries as to the accuracy of the information. Malone Commercial Brokers excludes unequivocally all informed or implied terms, conditions and warranties arising out of this document and excludes all liability for loss and damages therefrom. All data is subject to change of price, error, omissions, other conditions or withdrawal without notice. Malone Commercial Brokers is acting as the Seller's/Lessor's agent in the marketing of this property.



**PETER HARRINGTON**

207.772.0088 D

207.318.8888 C

[peter@malonecb.com](mailto:peter@malonecb.com)

**MALONE COMMERCIAL BROKERS**

5 Moulton Street • Suite 3

Portland, ME 04101

207.772.2422 • [malonecb.com](http://malonecb.com)