



8,000+/- SF FOR LEASE - BTS

Candler Business Park | Gainesville, GA 30507
2263 Hardwood Circle Lot 8



Industrial Building For Lease

OFFERING SUMMARY

Lease Rate:	Contact Agent For Pricing
Building Size:	8,000 +/- Square Feet
Zoning:	Light Industrial

FOR INFORMATION

LEE HEMMER, CCIM, SIOR
Principal/Managing Broker

o | 770-988-6383
lee@candler.com

135 Maple Street, NW
Gainesville, GA 30501
www.candler.com

Candler Business Park
Managed by
Candler Real Estate
Property Management



Candler Real Estate | 135 Maple Street, Gainesville, GA 30501 | 770-988-6383 | www.candler.com

© 2022 Candler Real Estate. Information contained herein was obtained from sources deemed reliable and, while thought to be correct, have not been verified. Candler Real Estate does not guarantee the accuracy or completeness of the information presented, nor assumes any responsibility or liability for any errors or omissions therein.



PROPERTY HIGHLIGHTS

- 8,000+/- Square Feet under construction - available August 2024
- Three loading docks and one drive in door
- 10% office finish
- 3 phase, 400 amp, 240 volt power service
- 22' ceiling height
- Build to suit for industrial programs
- 3.5 miles from I-985 exit 20 and 11 miles from Braselton, GA, 4.8 miles to Jackson County (14th fastest growing county in US), 65 miles to Hartsfield-Jackson Atlanta International Airport, and 246 miles to Port of Savannah
- The Gainesville-Hall Metropolitan Statistical Area (MSA) is among the top 50 fastest growing metros in the U.S. Total population is over 205,000 with a daytime population in Gainesville, the county seat, exceeding 100,000 people.
- Hall County is home to more than 320 manufacturing and processing concerns and 50 locations of international companies representing 15 countries. Since 2015, 118 new and expanded businesses have announced 5,750 jobs and \$1.5 billion in capital investment.



8,000+/- SF FOR LEASE - BTS

Candler Business Park | Gainesville, GA 30507

2263 Hardwood Circle Lot 8

LOT 8 - 8,000 SF BUILDING



Candler Real Estate | 135 Maple Street, Gainesville, GA 30501 | 770-988-6383 | www.candler.com

© 2022 Candler Real Estate. Information contained herein was obtained from sources deemed reliable and, while thought to be correct, have not been verified. Candler Real Estate does not guarantee the accuracy or completeness of the information presented, nor assumes any responsibility or liability for any errors or omissions therein.



8,000+/- SF FOR LEASE - BTS

Candler Business Park | Gainesville, GA 30507

2263 Hardwood Circle Lot 8



Candler Real Estate | 135 Maple Street, Gainesville, GA 30501 | 770-988-6383 | www.candler.com

© 2022 Candler Real Estate. Information contained herein was obtained from sources deemed reliable and, while thought to be correct, have not been verified. Candler Real Estate does not guarantee the accuracy or completeness of the information presented, nor assumes any responsibility or liability for any errors or omissions therein.



8,000+/- SF FOR LEASE - BTS

Candler Business Park | Gainesville, GA 30507

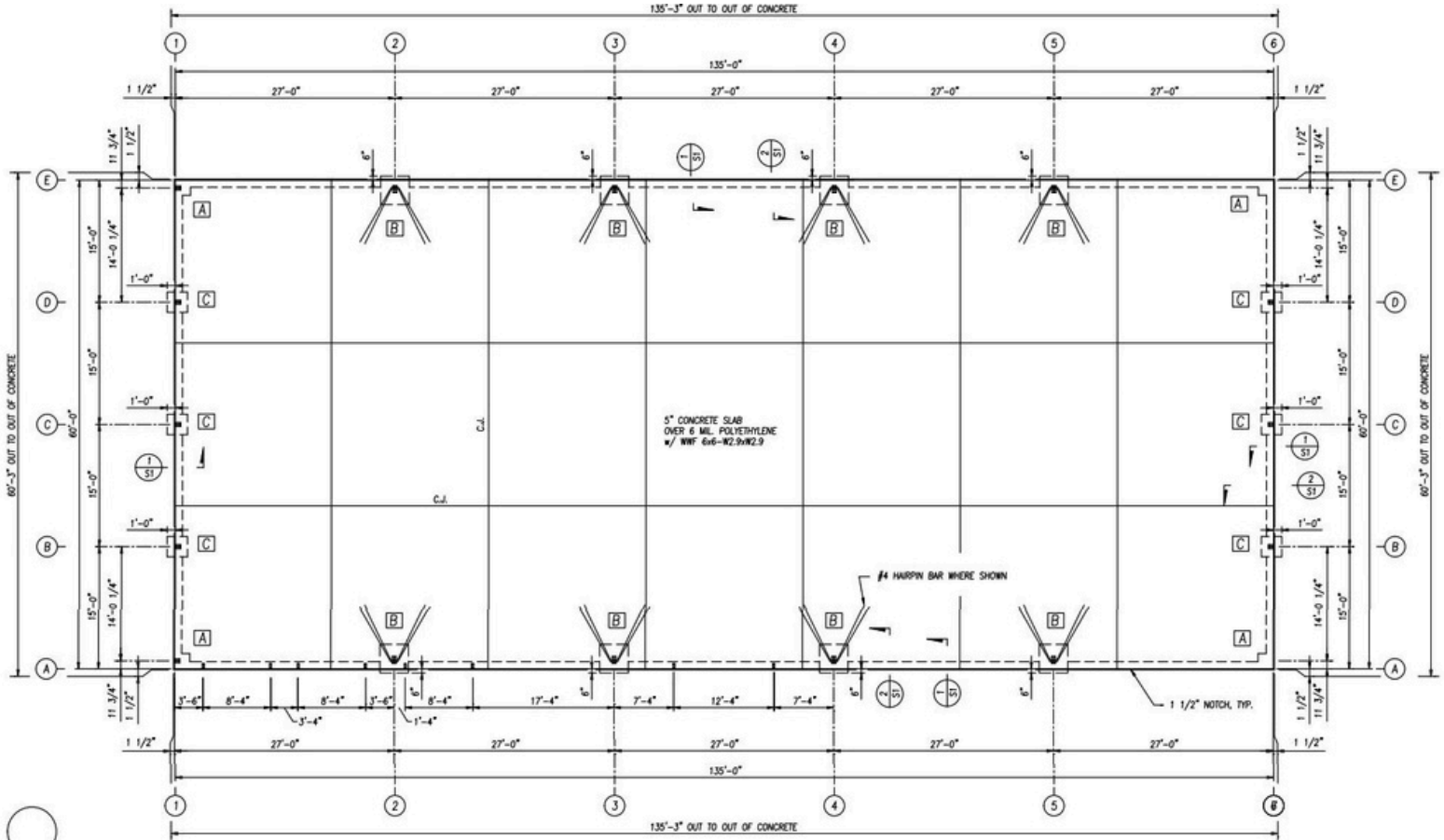
2263 Hardwood Circle Lot 8



Candler Real Estate | 135 Maple Street, Gainesville, GA 30501 | 770-988-6383 | www.candler.com

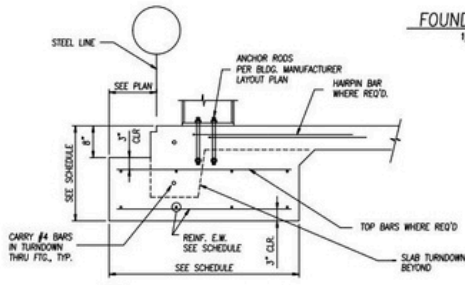
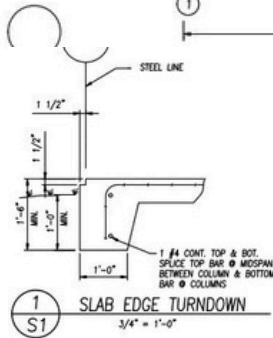
© 2022 Candler Real Estate. Information contained herein was obtained from sources deemed reliable and, while thought to be correct, have not been verified. Candler Real Estate does not guarantee the accuracy or completeness of the information presented, nor assumes any responsibility or liability for any errors or omissions therein.

Floor Plan



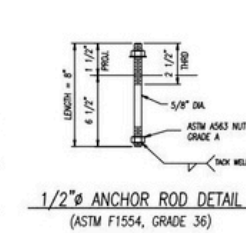
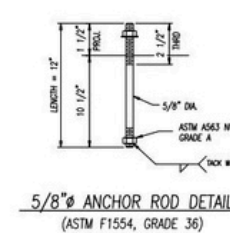
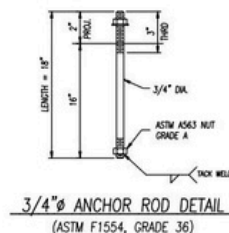
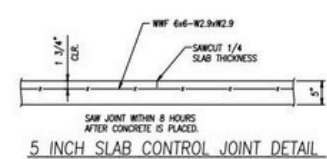
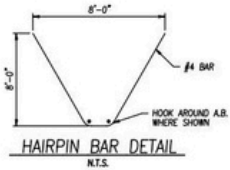
FOUNDATION PLAN
1/8" = 1'-0"

C.J. DENOTES APPROX. LOCATION OF CONTROL JOINT
A DENOTES FOOTING TYPE - SEE SCHEDULE
Ø DENOTES 1/2" DIA. ANCHORS AT CHANNELS



TYPE	FOOTINGS			PIER/PEDESTAL		ANCHOR RODS	HARPIN	DETAIL
	SIZE *	DEPTH	REINF.	SIZE	REINF.			
A	2'-0" x 2'-0"	18"	3/8" CW T & B	---	---	4- 5/8"	---	2/S2
B	3'-6" x 3'-6"	32"	3/8" CW T & B	---	---	4- 3/4"	2 #	2/S2
C	2'-6" x 2'-6"	30"	3/8" CW T & B	---	---	4- 5/8"	---	2/S2

FIRST DIMENSION SHOWN IN SCHEDULE IS LEFT TO RIGHT ON PLAN.

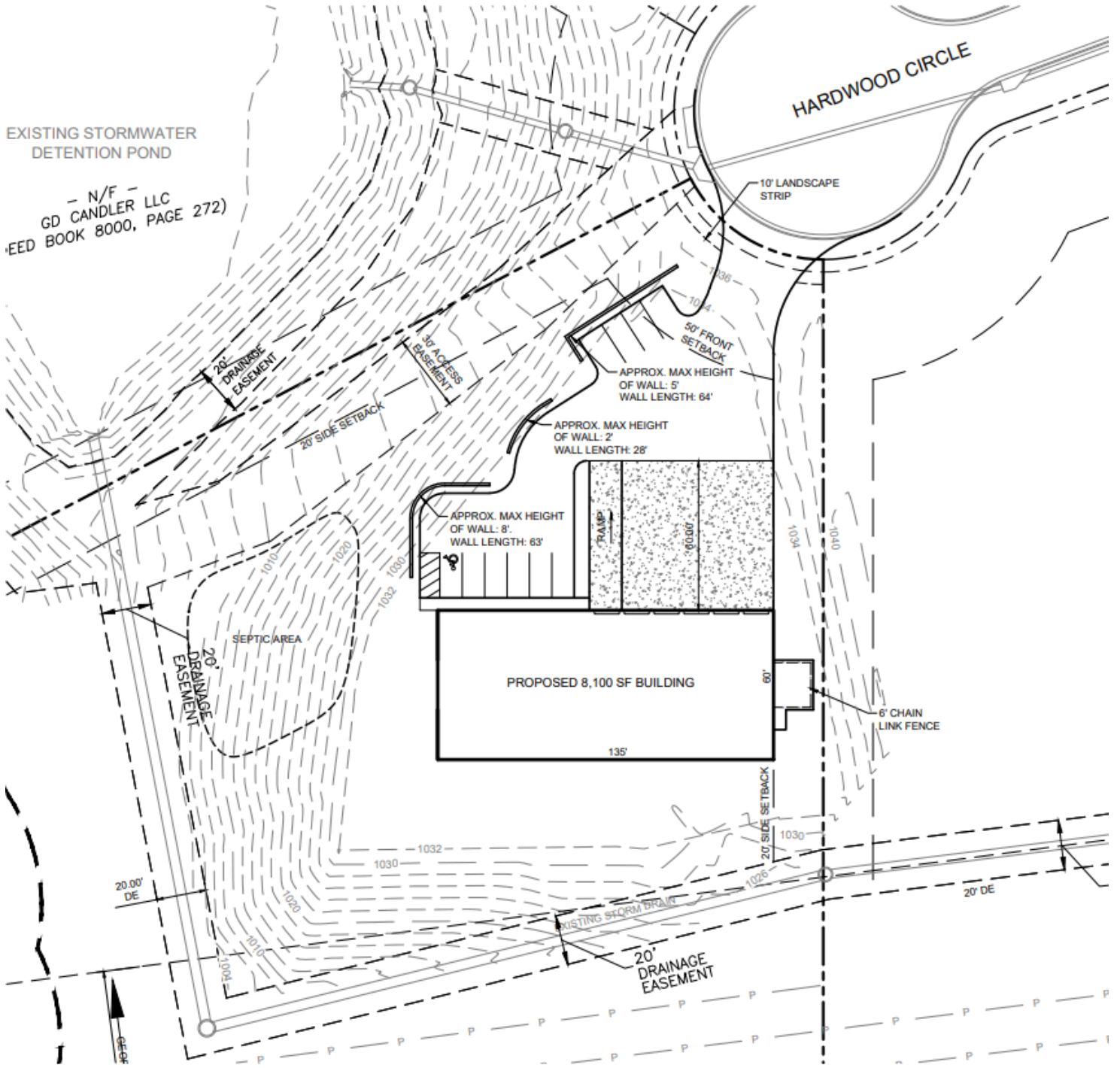


NOTE: IF MORE THAN TWO ANCHOR BOLTS ARE USED, USE ONE HARPIN FOR EACH PAIR OF BOLTS.

8,000+/- SF FOR LEASE - BTS

Candler Business Park | Gainesville, GA 30507

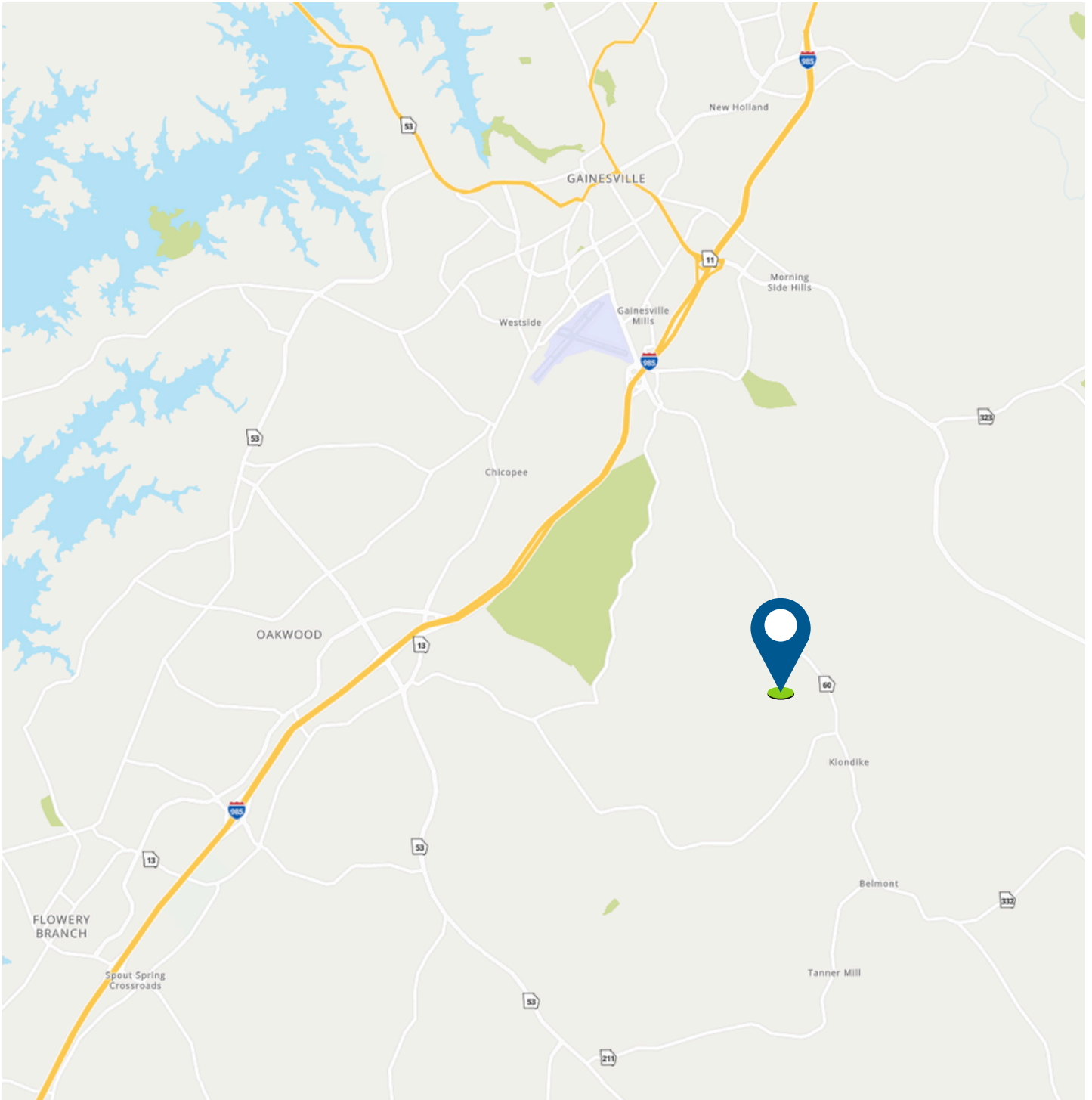
2263 Hardwood Circle Lot 8



8,000+/- SF FOR LEASE - BTS

Candler Business Park | Gainesville, GA 30507

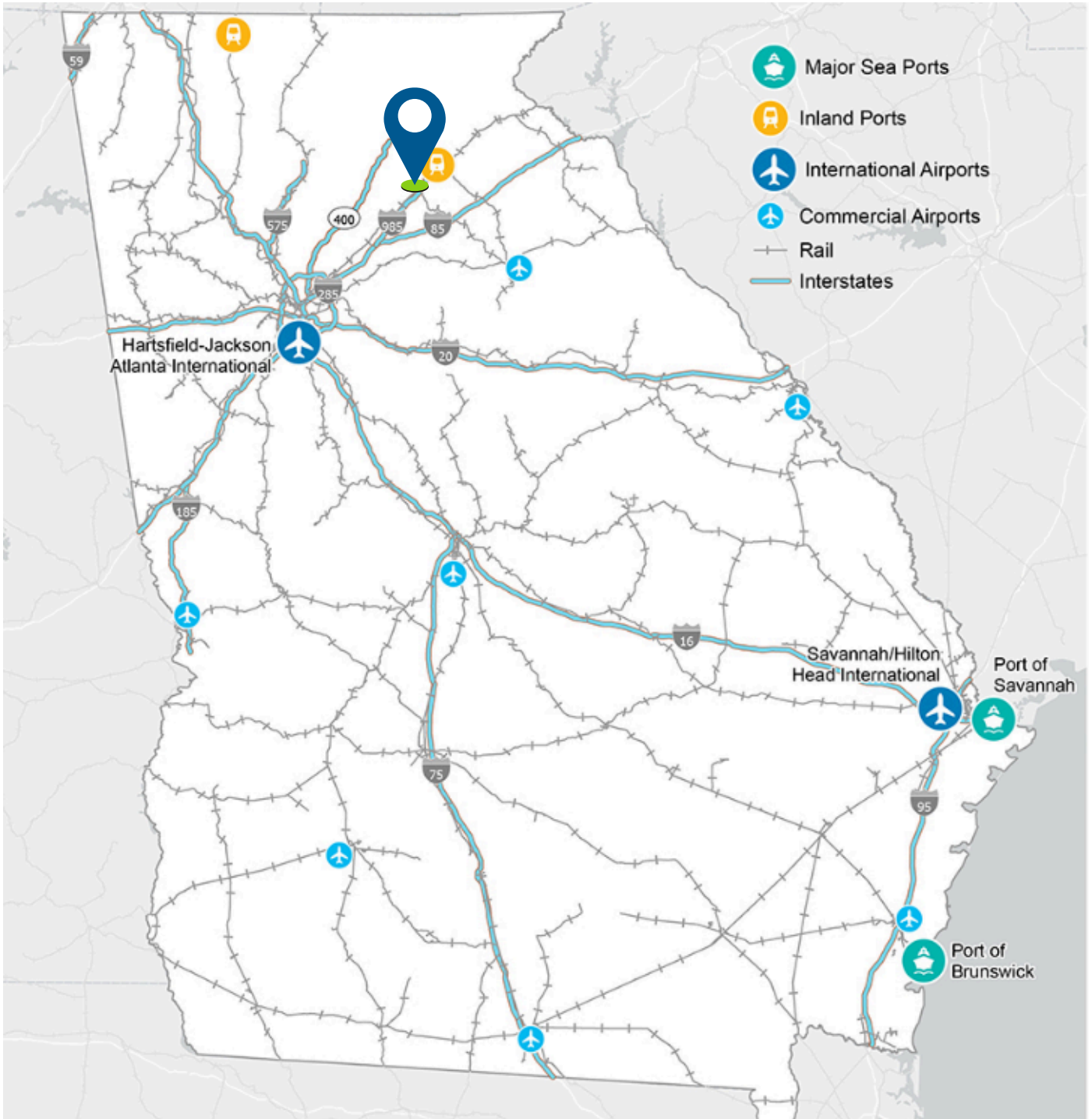
2263 Hardwood Circle Lot 8



8,000+/- SF FOR LEASE - BTS

Candler Business Park | Gainesville, GA 30507

2263 Hardwood Circle Lot 8





CANDLER

REAL ESTATE

FOR MORE INFORMATION, PLEASE CONTACT:

LEE HEMMER, CCIM, SIOR

Principal/Managing Broker

o | 770-988-6383
lee@candler.com



Candler Real Estate | 135 Maple Street, Gainesville, GA 30501 | 770-988-6383 | www.candler.com

© 2022 Candler Real Estate. Information contained herein was obtained from sources deemed reliable and, while thought to be correct, have not been verified. Candler Real Estate does not guarantee the accuracy or completeness of the information presented, nor assumes any responsibility or liability for any errors or omissions therein.