

# University Park Professional Center

938 University Park Blvd, Clearfield, UT 84015



Presented by  
Utah Professional Offices, LLC



## Price: Upon Request

Are you looking for a modern, fully renovated commercial space in a fantastic location? Look no further! Our property offers easy access to I-15, I-89, I-93, and Hill Air Force Base, making it an ideal spot for your business.

### Key Features:

- **Modern Renovations:** The space is currently being fully renovated with a modern finish. The exterior of the building, lobby area, common area bathrooms, and exterior landscape were all fully renovated in the past year.
- **Flexible Leasing Options:** Lease the full space, split it for flex space, or lease as Executive Offices. We can create a custom plan with associated pricing to help your business flourish.
- **Convenient Location:** Located on a fantastic route across the street from Weber State University Campus.
- **Backup Generator:** Ensures your business can continue to function in case of a power outage.
- **Exterior Signage:** Available depending on the amount of space leased.
- **Electric Car Charging Station:** Available for tenants onsite.
- **Full Service Lease:** Landlord covers property taxes, utilities, CAM, and janitorial services. Internet options are also available.

# University Park Professional Center

938 University Park Blvd, Clearfield, UT 84015



Easy Access to I-15, I-89, and I-93  
Fully Renovated  
Backup Generator and Car Charging Station  
Lots of Natural Light



**Brett Mills**

[brettmillsconsulting@gmail.com](mailto:brettmillsconsulting@gmail.com)

(801) 628-6771

## Utah Professional Offices, LLC

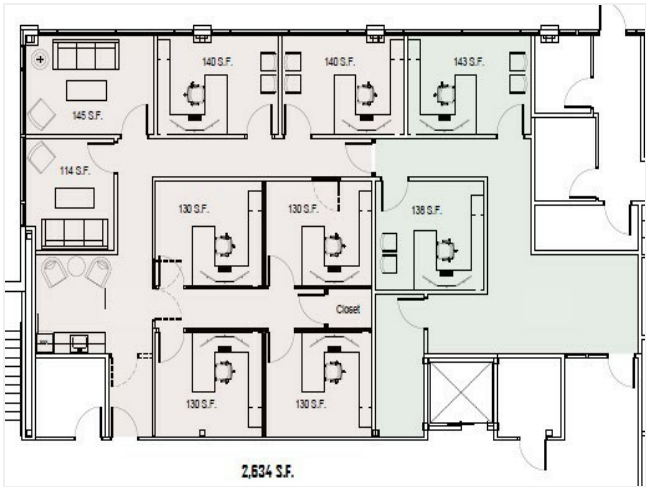
5668 Silver Mountain Cv  
Mountain Green, UT 84050



# University Park Professional Center

938 University Park Blvd, Clearfield, UT 84015

938 University Park Blvd, Clearfield, UT 84015



Floorplan

## Listing space

### 1st Floor

Space Available	2,634 SF
Rental Rate	Upon Request
Date Available	Now
Service Type	Full Service
Built Out As	Professional Services
Space Type	New
Space Use	Office
Lease Term	Negotiable

Are you looking for a modern, fully renovated commercial space in a fantastic location? Look no further! Our property offers easy access to I-15, I-89, I-93, and Hill Air Force Base, making it an ideal spot for your business. Key Features:- Modern Renovations: The space is currently being fully renovated with a modern finish. The exterior of the building, lobby area, common area bathrooms, and exterior landscape were all fully renovated in the past year.- Flexible Leasing Options: Lease the full space, split it for flex space, or lease as Executive Offices. We can create a custom plan with associated pricing to help your business flourish.- Convenient Location: Located on a fantastic route across the street from Weber State University Campus.- Backup Generator: Ensures your business can continue to function in case of a power outage.- Exterior Signage: Available depending on the amount of space leased.- Electric Car Charging Station: Available for tenants onsite.- Full Service Lease: Landlord covers property taxes, utilities, CAM, and janitorial services. Internet options are also available. This is a space you will love to come to work and invite your clients to. Call now to discuss your business needs and secure this premier location before it's gone!

# University Park Professional Center

938 University Park Blvd, Clearfield, UT 84015

## Property Photos



Client Consultation Room



Lobby Entrance

# University Park Professional Center

938 University Park Blvd, Clearfield, UT 84015

## Property Photos



Building Photo

# University Park Professional Center

938 University Park Blvd, Clearfield, UT 84015

## Location

