

SKYLINE BUSINESS CENTER

MINNEAPOLIS-ST. PAUL
SOUTH

1200 Cliff Road E
Burnsville, MN 55337



FOR LEASE

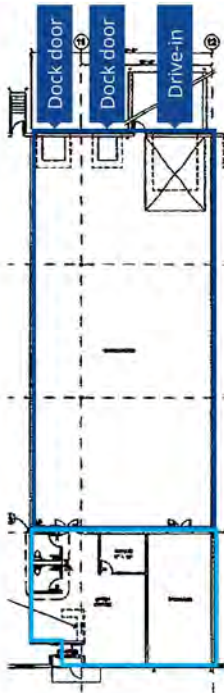
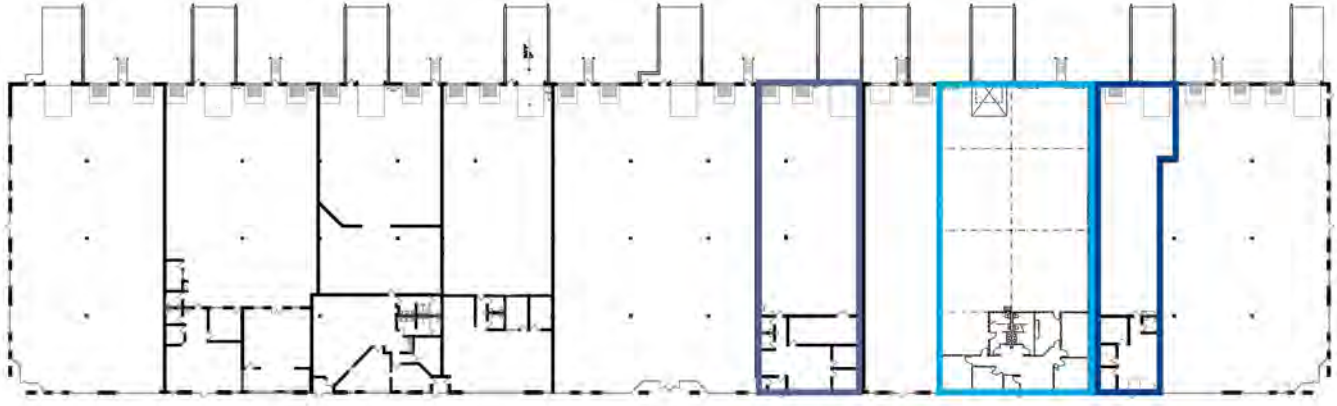
4,253 - 14,084 SF



LEASED BY

Colliers

- Suite 1186 - 6,736 SF
- Suite 1194 - 9,831 SF
- Suite 1196 - 4,253 SF

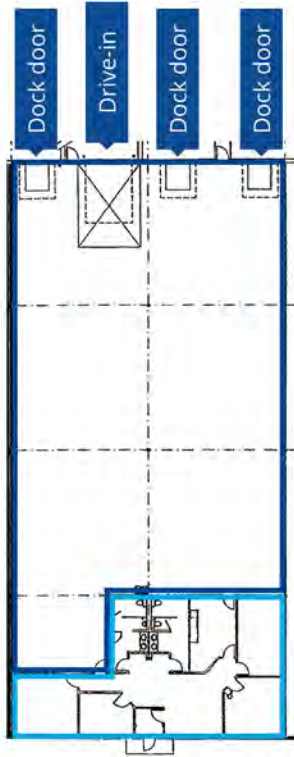


Suite 1186
6,736 SF

- Office - 1,031 SF
- Warehouse - 5,705 SF

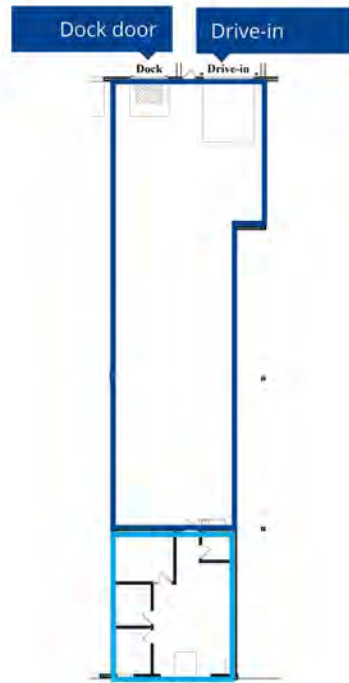
BUILDING SPECS

Building SF	83,259 SF
Year Built	1997
Clear Height	24'
Bay Depth	140'
Parking	233 stalls (2.8/1,000 SF)
Lease Rates	Negotiable
CAM/Tax (2026)	\$4.53 PSF



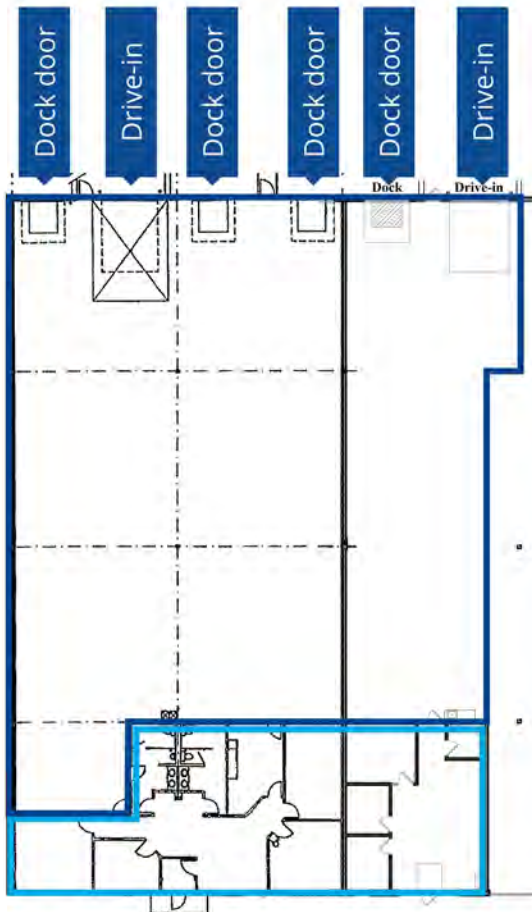
Suite 1194
9,831 SF

- Office - 2,013 SF
- Warehouse - 7,818 SF



Suite 1196
4,253 SF

- Office - 994 SF
- Warehouse - 3,259 SF



1194-1196
Combined
14,084 SF

- Office - 3,007 SF
- Warehouse - 11,077

Committed to Driving Value for Our Customers

Properties with a Competitive Edge

Our scale, proprietary data and local relationships allow our 1,200+ skilled team members to help customers stay ahead of market trends.

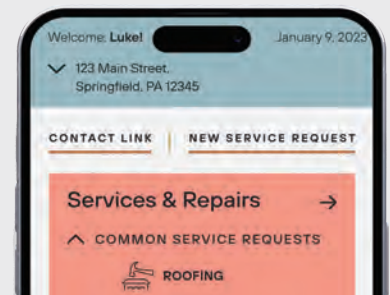


Best-in-Class Customer Service

Our on-the-ground regional teams provide you with local expertise, leveraging data-driven insights to find the right solutions for your business.

Link+

Our digital customer experience platform provides easy access to your property management teams, lease documents, billing and service requests. Sign up today!



500 Million Square Foot Portfolio

Energy Solutions

Link Logistics' award-winning utility management program helps customers save time and money while unlocking energy efficiency opportunities. Enroll today through Link+.



CONTACT INFORMATION



1200 Cliff Road E
Burnsville, MN 55337

Ryan Krzmarzick CCIM, SIOR

ryan.k@colliers.com

(952) 897-7746

Steve Nilsson CCIM, SIOR

steve.nilsson@colliers.com

(952) 897-7899

Matt Newell

matthew.newell@colliers.com

(651) 356-5074

This document is for informational purposes only and does not constitute an offer or acceptance of a lease. Any lease agreement must be in writing and signed by the landlord. No representations or warranties are made except as expressly stated in a signed lease. Information is provided "as is" and may be subject to errors or change without notice.



LEASED BY

