

# 248 MILL ROAD

CHELMSFORD, MA - 01824

COMMERCIAL  
**O'BRIEN**  
PROPERTIES, INC.



**2,810 SF OF FLEX SPACE AVAILABLE FOR LEASE  
CONVENIENTLY LOCATED OFF OF ROUTE 3 AND I-129**

# FOR LEASE

COMMERCIAL  
**O'BRIEN**  
PROPERTIES, INC.

O'BRIEN COMMERCIAL PROPERTIES  
336 BAKER AVENUE, CONCORD, MA 01742  
978.369.5500  
OBRIENCOMMERCIAL.COM



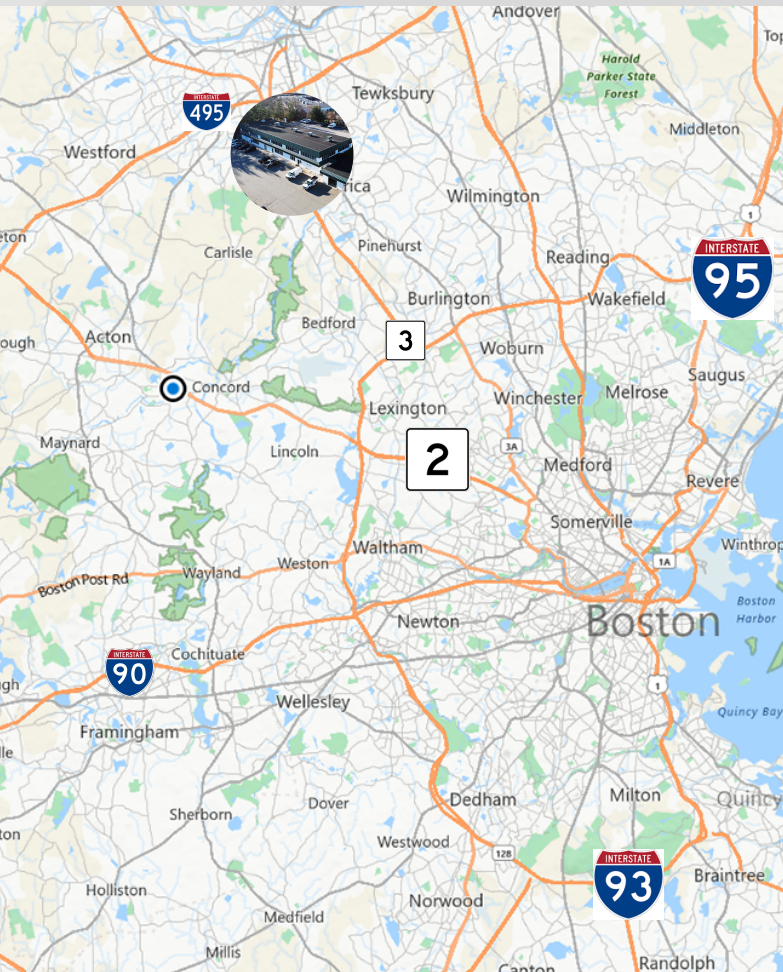
**ROB MCGARRY  
ASSOCIATE**

ROB@OBRIENCOMMERCIAL.COM  
978.209.3211

# 248 MILL ROAD

CHELMSFORD, MA - 01824

COMMERCIAL  
**O'BRIEN**  
PROPERTIES, INC.



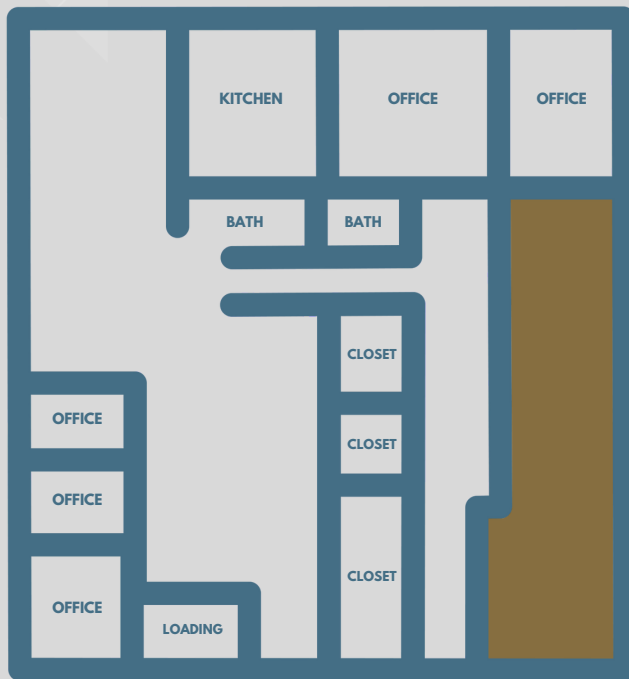
**Conveniently located off of Route 3 and I-129, 248 Mill Road has 2,810 SF of flex space available For Lease.**

**The available space has been recently updated with two (2) restrooms, a kitchenette and five (5) single offices.**

**The space is serviced by double door loading with ample parking.**

# 248 MILL ROAD

CHELMSFORD, MA - 01824



- . Year Built: 1998
- . Size: 2,810 SF
- . Ample Parking
- . Zoning: IA
- . Fire Suppression: Yes
- . Heat: Natural Gas
- . Water: Town
- . Sewer: Town
- . AC
- . Double Door Loading
- . kitchenette
- . Restrooms: Two (2)
- . Stories: Two (2)



**2,810 SF OF FLEX SPACE AVAILABLE FOR LEASE**

# 248 MILL ROAD

CHELMSFORD, MA - 01824

COMMERCIAL  
**O'BRIEN**  
PROPERTIES, INC.



248 MILL ROAD

COMMERCIAL  
**O'BRIEN**  
PROPERTIES, INC.

O'BRIEN COMMERCIAL PROPERTIES  
336 BAKER AVENUE, CONCORD, MA 01742  
978.369.5500  
OBRIENCOMMERCIAL.COM



**ROB MCGARRY**  
ASSOCIATE

ROB@OBRIENCOMMERCIAL.COM  
978.209.3211