

1900

THE ALAMEDA

Available for Lease

Suite 300 ±5,889 rsf

Suite 520 ±1,292 rsf

- Monument Signage Available
- Building Completely Renovated
- Great Windowline
- 3/1,000 Parking Ratio
- Excellent I-880 Access
- Minutes to Downtown San Jose and Mineta Airport
- Walking Distance to Caltrain College Station

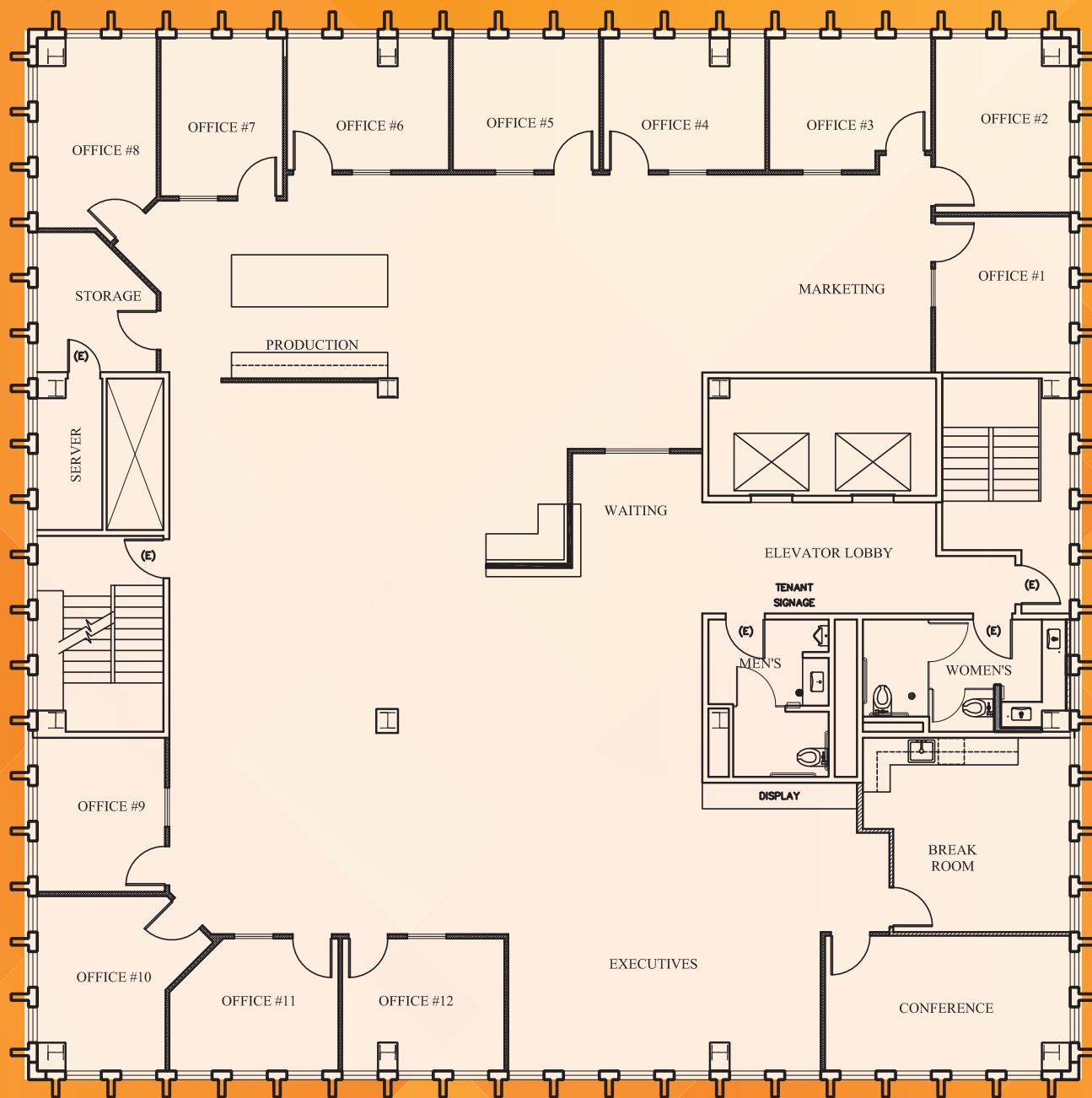


Geri Wong

geri.wong@nrmk.com

408.987.4134

CA RE License #01142432



1900

THE ALAMEDA

Suite 300 Floor Plan ±5,889 rsf

- 12 Private Offices
- 2 Conference Rooms

Geri Wong

geri.wong@nmrk.com

408.987.4134

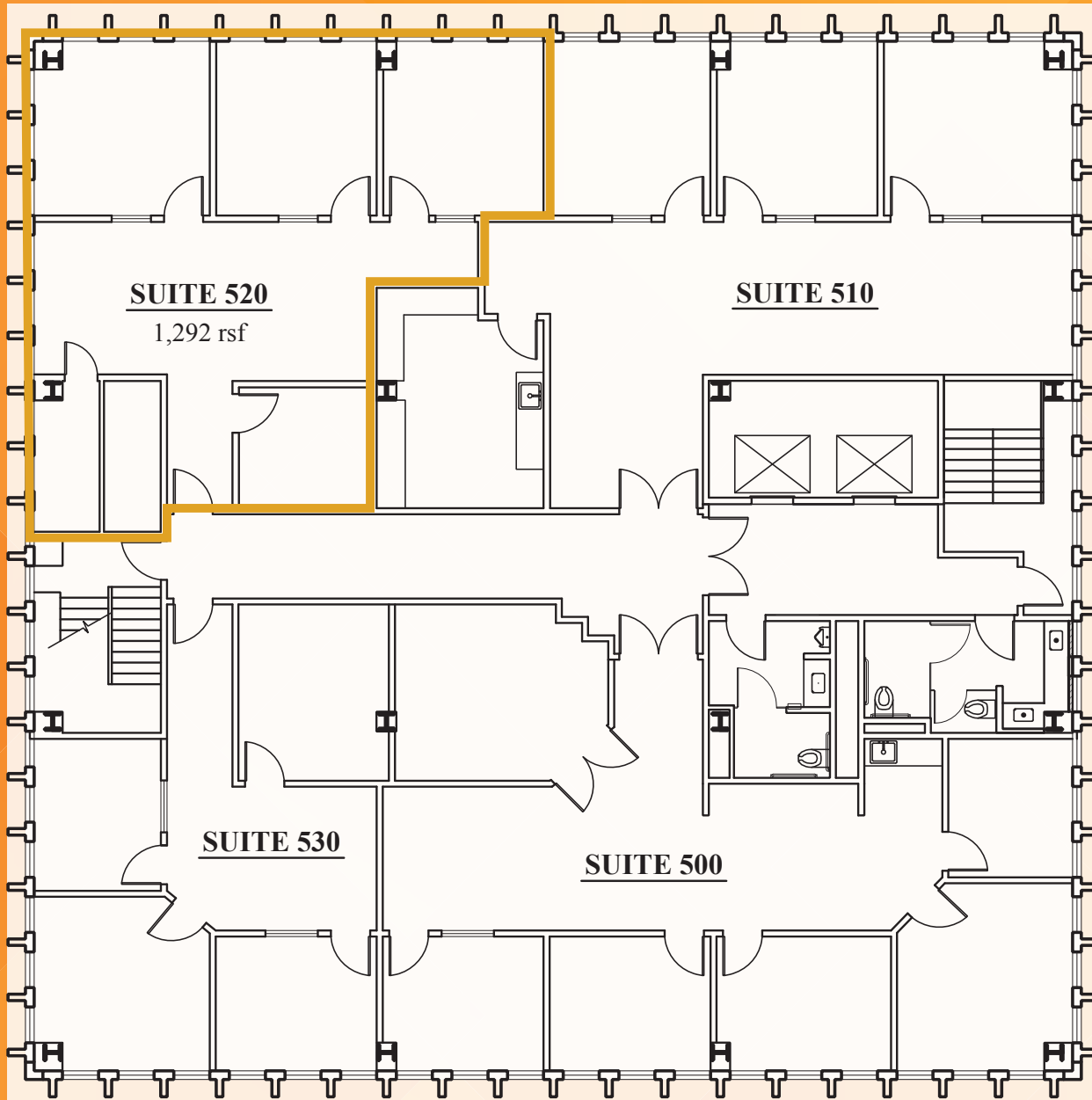
CA RE License #01142432

1900

THE ALAMEDA

Suite 520 Floor Plan ±1,292 rsf

- 3 Private Offices



Geri Wong

geri.wong@nmrk.com

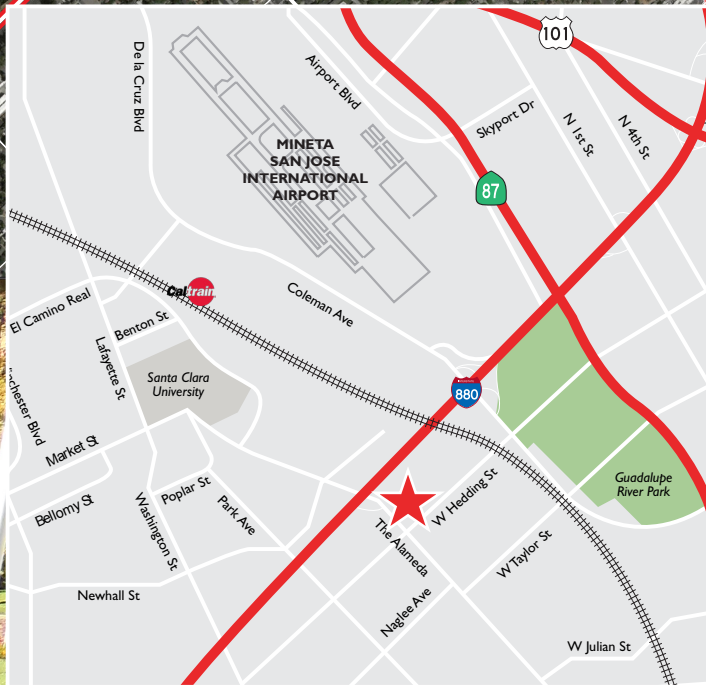
408.987.4134

CA RE License #01142432

1900

THE ALAMEDA

Aerial & Location Map



Geri Wong

geri.wong@nmrk.com

408.987.4134

CA RE License #01142432

NEWMARK

3055 Olin Avenue, Suite 2200, San Jose, CA 95128 | The distributor of this communication is performing acts for which a real estate license is required. The information contained herein has been obtained from sources deemed reliable but has not been verified and no guarantee, warranty or representation, either express or implied, is made with respect to such information. Terms of sale or lease and availability are subject to change or withdrawal without notice. | 8628804763 • 03/25