

Former Bank Available

2,327 SF Available

67 Beacon Street
Boston, Massachusetts



Features

- + Iconic corner at the signalized intersection of Beacon Street and Charles Street in Boston's historic Beacon Hill neighborhood
- + Prominently located directly across from the Boston Public Garden which sees 3+ million annual visitors
- + Strong area demographics including household incomes of over \$200,000 within one mile
- + Join neighboring retailers including the first Starbucks in New England, Benefit Cosmetics, Deluca's Market, Cheers and Upper Crust Pizzeria
- + 2,327 SF retail condo with 1,148 SF basement

Retail Market



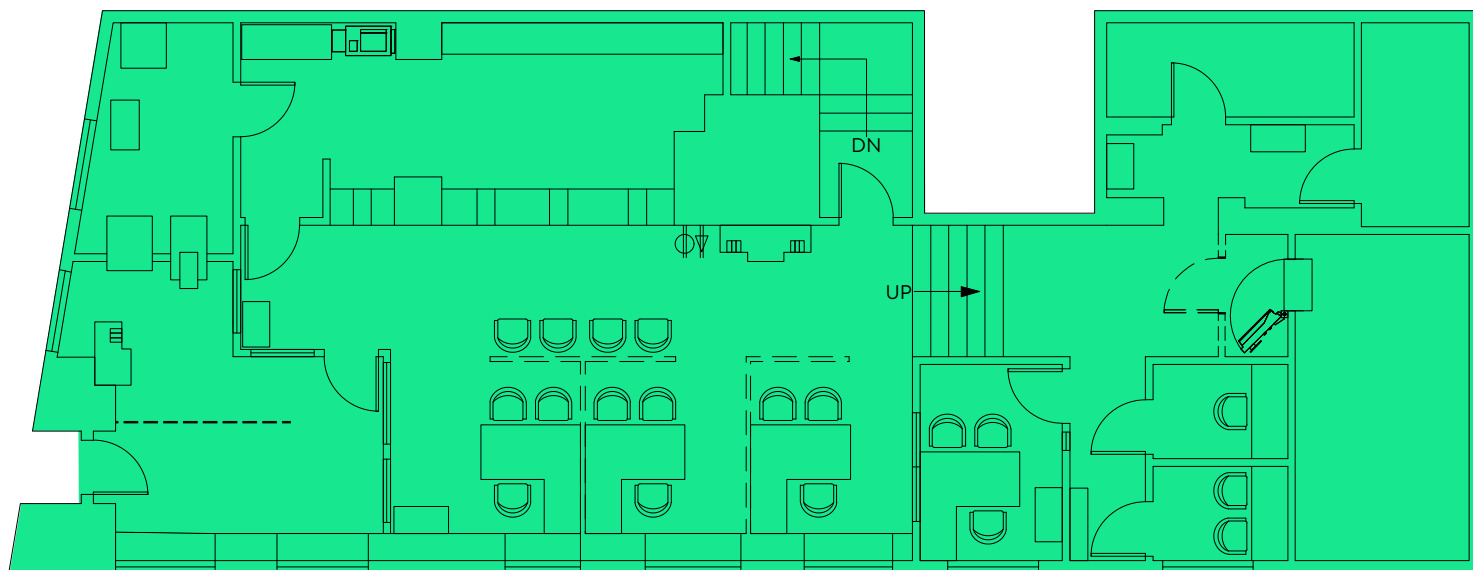
2023 Demographics	0.25 Miles	0.5 Miles	1 Mile	1.5 Miles
Estimated Population	5,254	23,630	79,587	159,475
Estimated Households	2,850	11,556	42,078	78,700
Estimated Average Household Income	\$236,921	\$207,922	\$201,096	\$181,054
Estimated Daytime Population	5,110	90,499	331,354	471,798

Former Bank Available

67 Beacon Street | Boston, Massachusetts

For Sale

Street Level



Contact Us

Rob Robledo

Executive Vice President

+1 617 912 6869

rob.robledo@cbre.com

Roberto Cordero

Senior Associate

+1 617 912 6818

roberto.cordero@cbre.com

© 2025 CBRE, Inc. All rights reserved. This information has been obtained from sources believed reliable, but has not been verified for accuracy or completeness. You should conduct a careful, independent investigation of the property and verify all information. Any reliance on this information is solely at your own risk. CBRE and the CBRE logo are service marks of CBRE, Inc. All other marks displayed on this document are the property of their respective owners, and the use of such logos does not imply any affiliation with or endorsement of CBRE. Photos herein are the property of their respective owners. Use of these images without the express written consent of the owner is prohibited.