

MODERN WEST OREM OFFICE

FOR SUBLEASE



PROPERTY DETAILS

729 N. 1500 W. Orem, Utah 84057

- \$9,395.00 (\$13.67) per month
- NNN Fees: \$1,000/Month
- Lease ends: August 31, 2027
- 8,250 SF Office
- Great I-15 Freeway Access
- Utopia Fiber Internet
- Modern finishes with wood and steel
- Polished Concrete Flooring
- 23 parking stalls with additional street parking
- Furniture available for sale: cubicles, office chairs, conference room tables, reception area couches, televisions, wood planter boxes

2025 DEMOS



EST. POPULATION

1 MILE » 15,308
3 MILE » 109,905
5 MILE » 196,729



EST. HOUSEHOLDS

1 MILE » 5,177
3 MILE » 33,827
5 MILE » 61,516



EST. AVERAGE HH INCOME

1 MILE » \$102,097
3 MILE » \$121,223
5 MILE » \$123,482



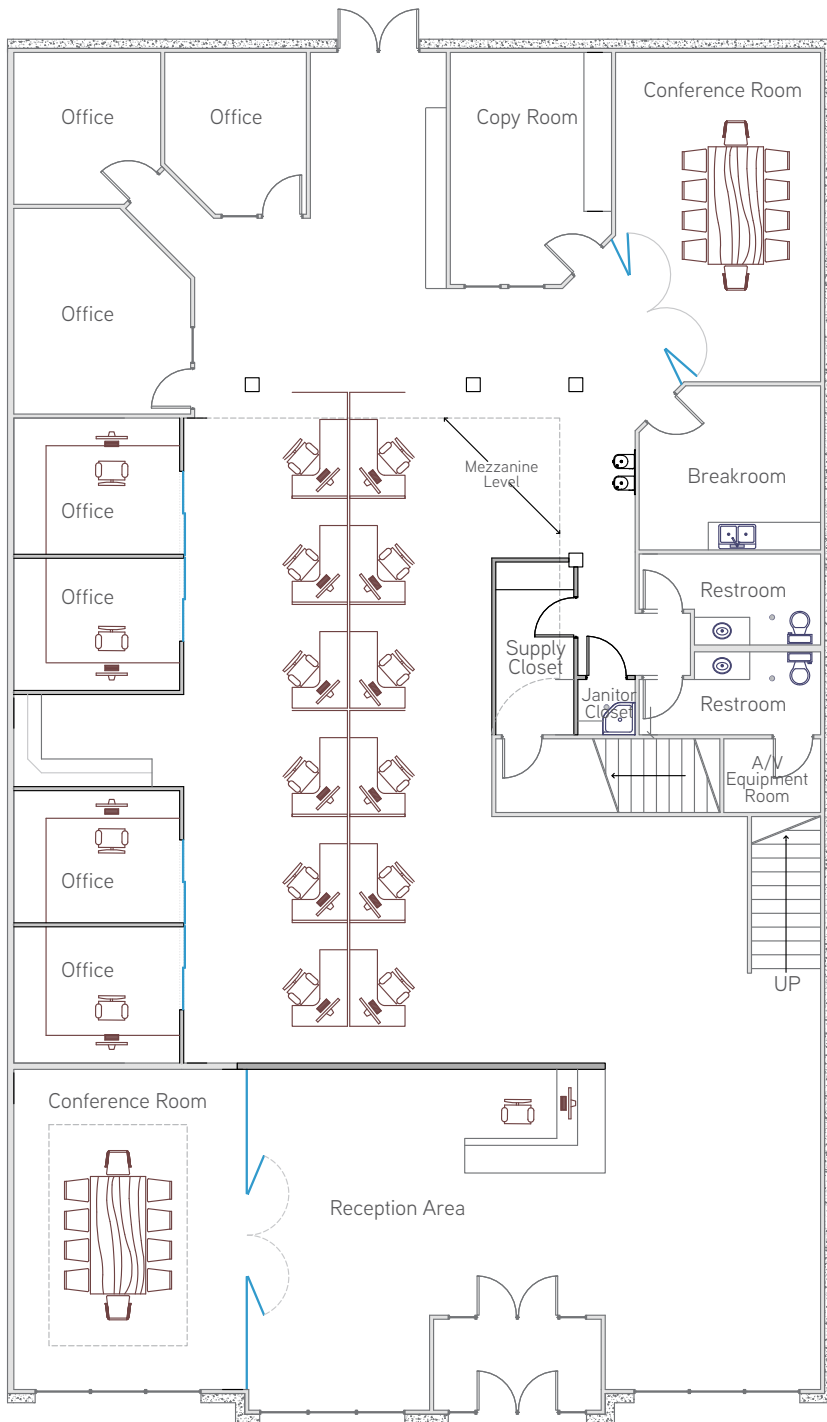
BILL STREET
bstreet@newmarkmw.com
direct 801.376.5282
[View Profile](#)

MARY STREET, CCIM
mstreet@newmarkmw.com
direct 801.358.6279
[View Profile](#)

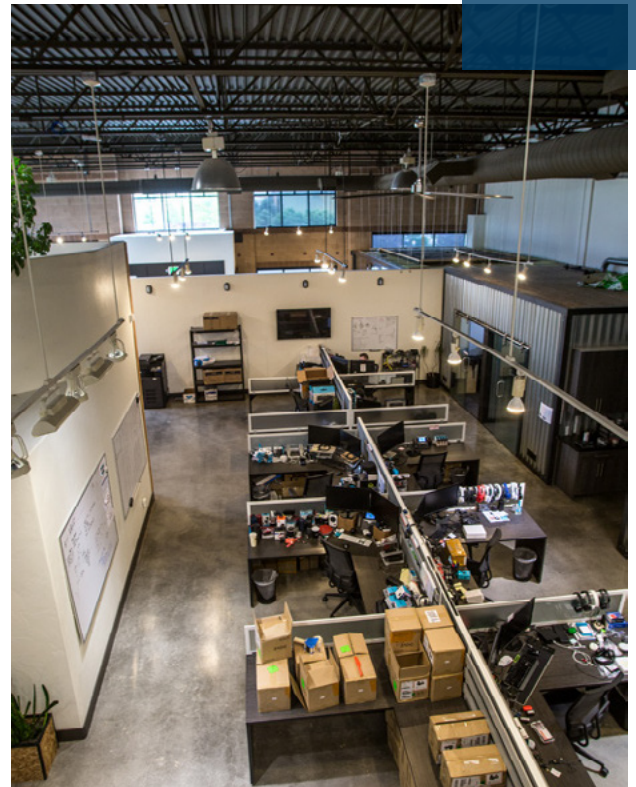
**FULL SERVICE
COMMERCIAL REAL ESTATE**
312 East South Temple
Salt Lake City, Utah 84111
Office 801.456.8800
www.newmarkmw.com

MODERN WEST OREM OFFICE

MAIN LEVEL FLOOR PLAN



- 8 Private Offices
- 12 Individual Cubicles
- Reception and Guest Receiving Areas
- Glassed Conference Room
- 2nd Conference Room or Large Office
- Break Room
- 2 Unisex Restrooms
- Secure Wiring and Data Closet
- Utility Room with Mop Sink



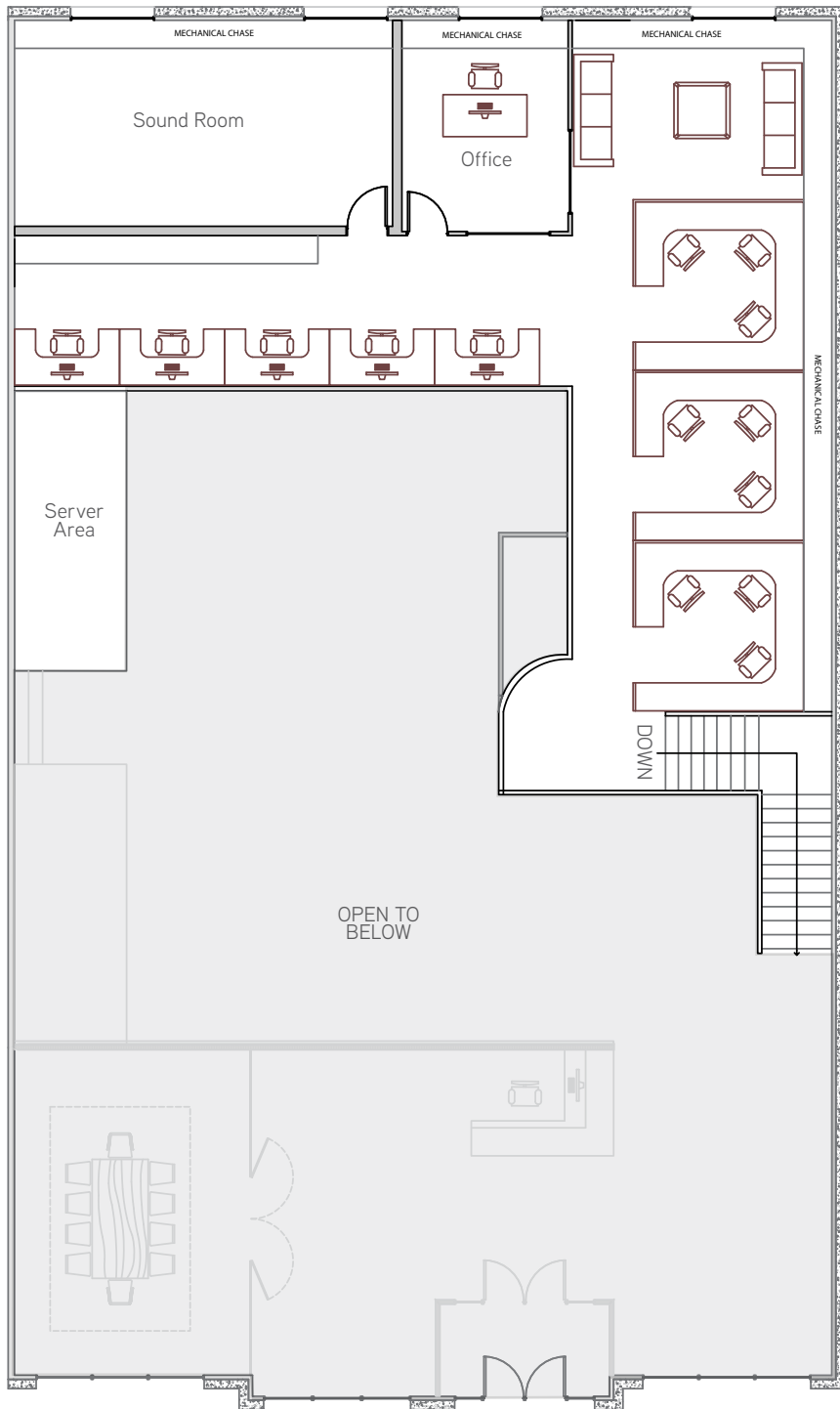
BILL STREET
 bstreet@newmarkmw.com
 direct 801.376.5282
[View Profile](#)

MARY STREET, CCIM
 mstreet@newmarkmw.com
 direct 801.358.6279
[View Profile](#)

**FULL SERVICE
 COMMERCIAL REAL ESTATE**
 312 East South Temple
 Salt Lake City, Utah 84111
 Office 801.456.8800
www.newmarkmw.com

MODERN WEST OREM OFFICE

MEZZANINE LEVEL FLOOR PLAN



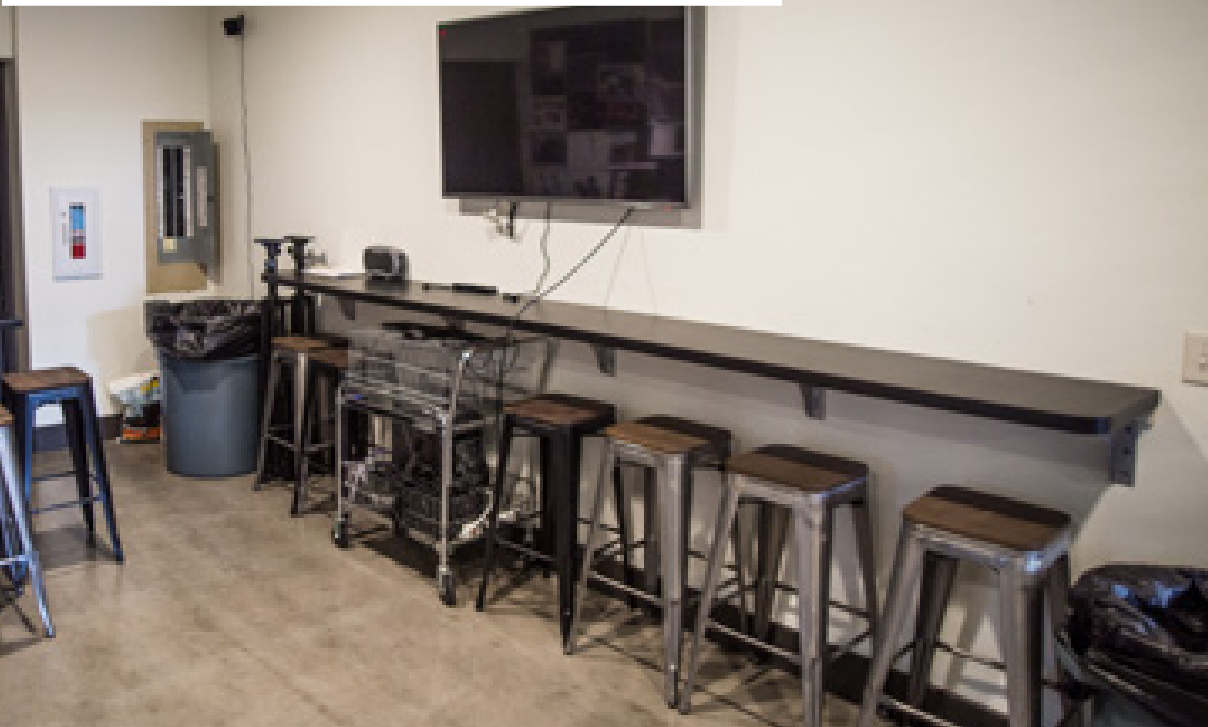
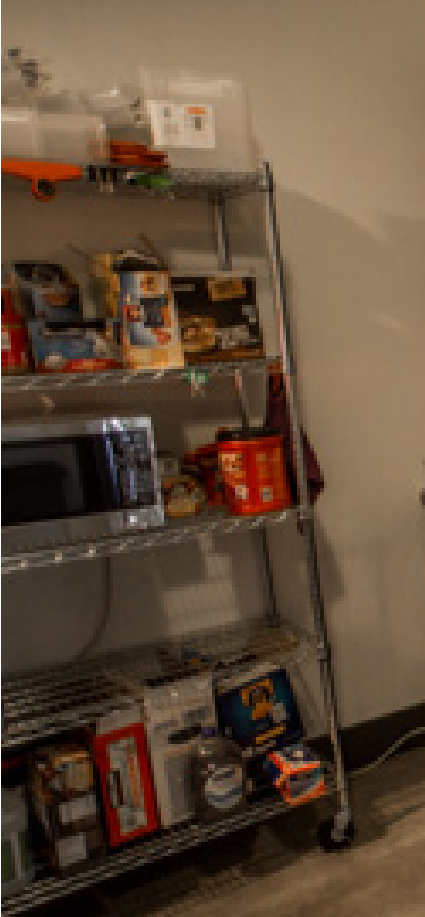
- 1 Private Office
- 3 Cubicles - 9 total individual workstations
- Sound Booth
- Server Area



BILL STREET
bstreet@newmarkmw.com
direct 801.376.5282
[View Profile](#)

MARY STREET, CCIM
mstreet@newmarkmw.com
direct 801.358.6279
[View Profile](#)

**FULL SERVICE
COMMERCIAL REAL ESTATE**
312 East South Temple
Salt Lake City, Utah 84111
Office 801.456.8800
www.newmarkmw.com



BILL STREET
 bstreet@newmarkmw.com
 direct 801.376.5282
[View Profile](#)

MARY STREET, CCIM
 mstreet@newmarkmw.com
 direct 801.358.6279
[View Profile](#)

**FULL SERVICE
 COMMERCIAL REAL ESTATE**
 312 East South Temple
 Salt Lake City, Utah 84111
 Office 801.456.8800
www.newmarkmw.com

