



41

Sequin Drive

GLASTONBURY | CT

CBRE

**15,270 SF OFFICE/FLEX
SPACE FOR SALE/LEASE**



PROPERTY OVERVIEW

Office/Flex Space

CBRE Inc. is pleased to bring to market 15,720 SF available for sale or lease at 41 Sequin Drive in Glastonbury, CT. With multiple entrances, this facility can be a single tenant or multiple tenants. Each floor is approximately 7,500 SF.

- Attractive office space that can be subdivided to 2,500 SF
- Two dock doors
- 800 amps of power
- 100% air-conditioned
- Close access to Route 2



15,720
**SQUARE FEET
AVAILABLE**

2
FLOORS

10,024
**SQUARE FEET OF
OFFICE SPACE**

5,246
**SQUARE FEET OF
INDUSTRIAL SPACE**

1991
YEAR BUILT

20'
CLEAR HEIGHT

42
PARKING SPACES

1.09
ACRES

PC
ZONING

\$1.895M
ASKING PRICE

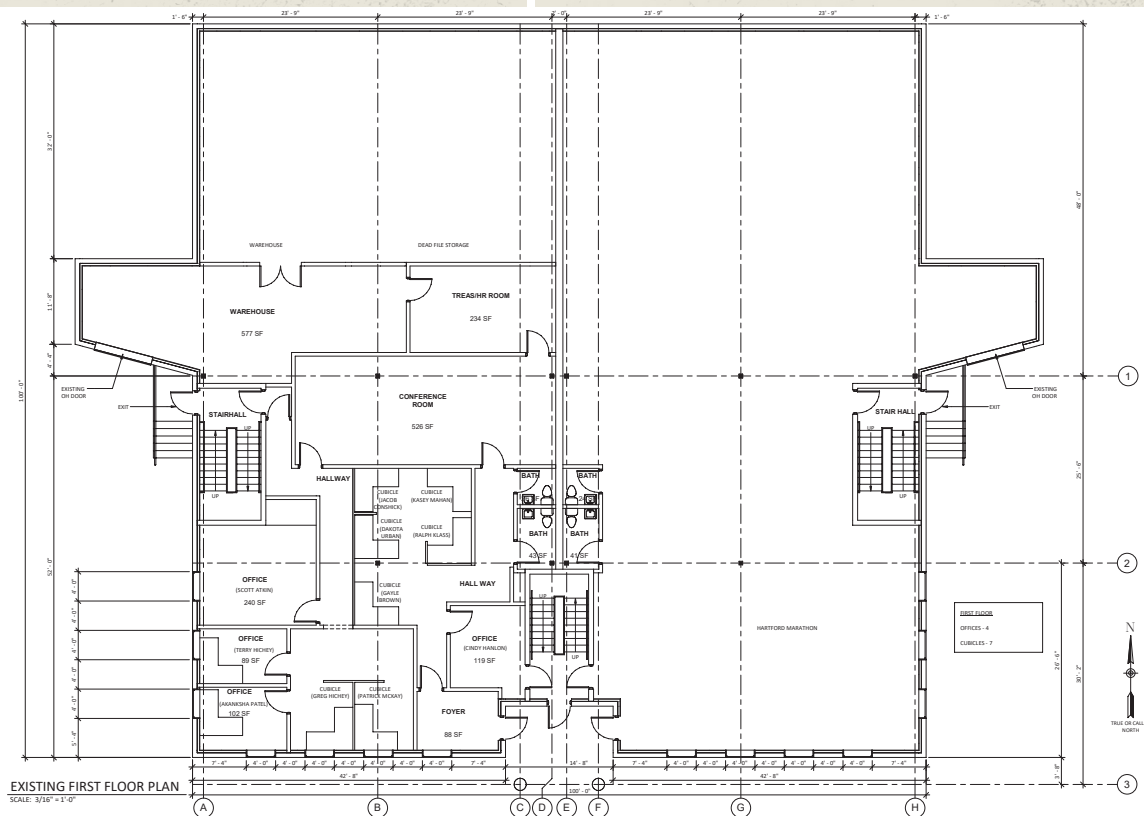
SINGLE OR
MULTI-TENANT
LEASING
OPPORTUNITY



INDUSTRIAL SPACE

1ST

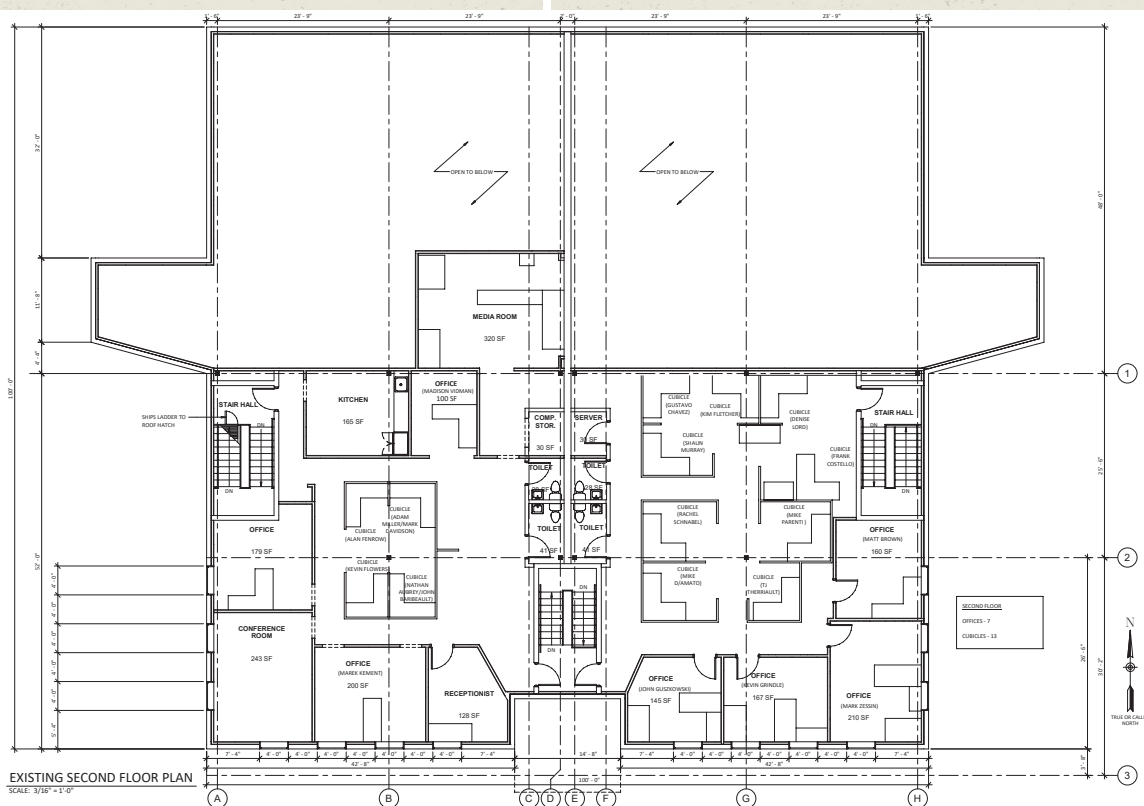
FLOOR



OFFICE SPACE

2ND

FLOOR



15,270 SF OFFICE/FLEX SPACE FOR SALE OR LEASE

GLASTONBURY | CT

41 Sequin Drive



GARY SCHLESS

First Vice President

+1 860 987 4792

gary.schless@cbre.com

ALEXIS AUGSBERGER

First Vice President

+1 860 987 4708

alexis.augsberger@cbre.com

© 2025 CBRE, Inc. All rights reserved. This information has been obtained from sources believed reliable but has not been verified for accuracy or completeness. CBRE, Inc. makes no guarantee, representation or warranty and accepts no responsibility or liability as to the accuracy, completeness, or reliability of the information contained herein. You should conduct a careful, independent investigation of the property and verify all information. Any reliance on this information is solely at your own risk. CBRE and the CBRE logo are service marks of CBRE, Inc. All other marks displayed on this document are the property of their respective owners, and the use of such marks does not imply any affiliation with or endorsement of CBRE. Photos herein are the property of their respective owners. Use of these images without the express written consent of the owner is prohibited.

CBRE