



2.984 ACRES

PROPERTY HIGHLIGHTS

- 2.984 Acres
- Located in Tomball Town Center
- \pm 204' of frontage on SH 249 Frontage Road
- Zoning: General Retail
- Curb Cut approved from TXDOT
- No encumbrances
- Utilities: Water & Sewer via the City of Tomball
- Sales Price: \$1,500,000

2.984 ACRES

DEMOGRAPHICS



22,013

2024 Total Population



8,582

2024 Total Households



2.51

2024 Average Household Size



113,891

2024 Average Household Income



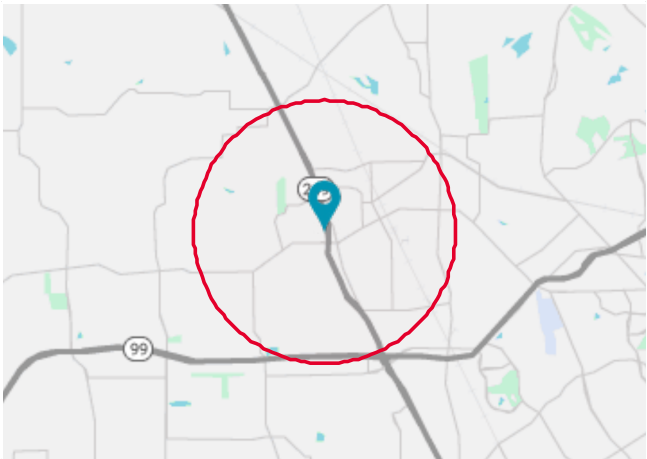
40.6

2024 Median Age



484,708

2024 Average Home Value



EMPLOYMENT



32,297

2024 Total Daytime Population



62%

2024 Daytime Population: Workers



38%

2024 Daytime Population: Residents



1,142.5

2024 Daytime Population Density (Pop/sq mi)



1,827

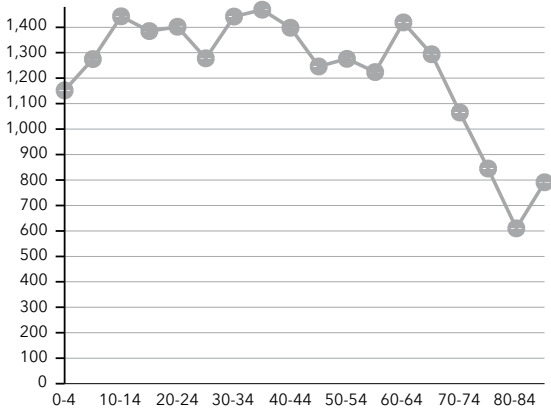
2024 Total (SIC01-99) Businesses



17,204

2024 Total (SIC01-99) Employees

POPULATION BY AGE GROUP



EDUCATIONAL ATTAINMENT

21%

High School Diploma

3%

GED/Alternative Credential

21%

Some College/No Degree

9%

Associate's Degree

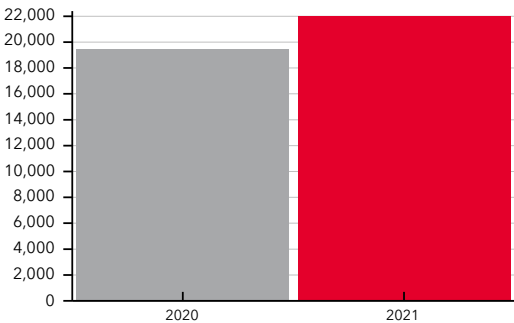
25%

Bachelor's Degree

13%

Graduate/Professional Degree

POPULATION TIME SERIES 2010-2021



48% Male Population (%)

52% Female Population (%)

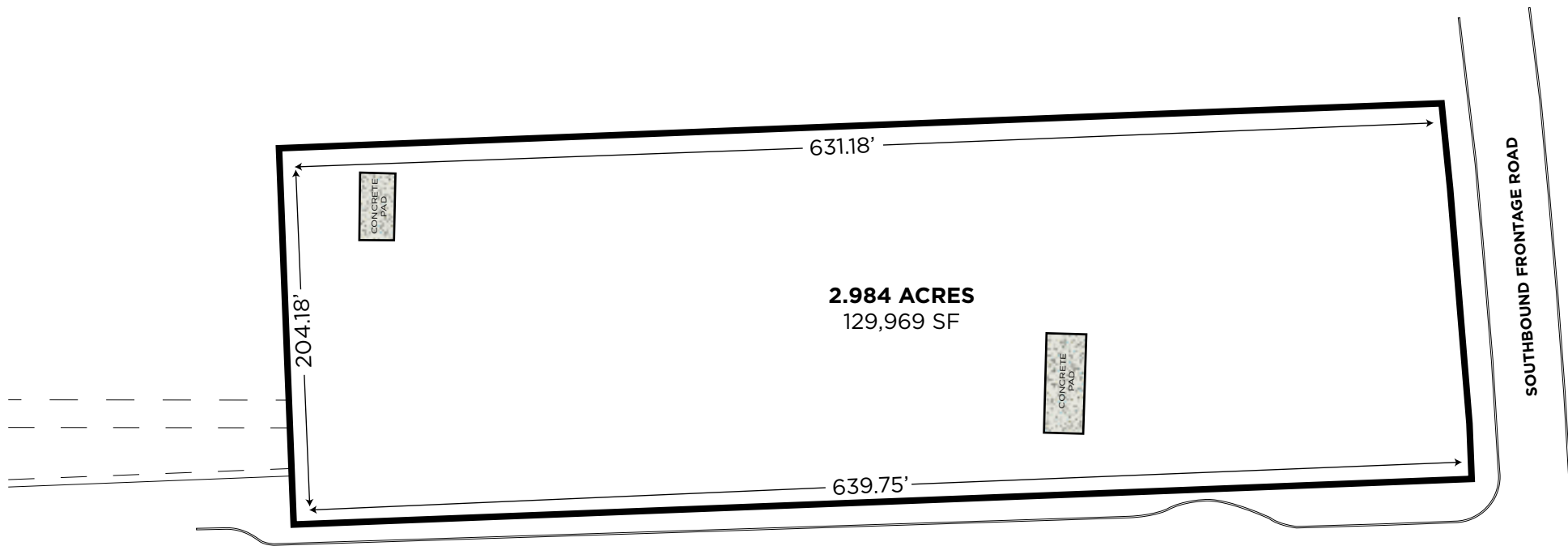
1.72% 2023-2028 Population: Compound Annual Growth Rate

YEAR

2.984 ACRES

AMENITIES MAP





FOR MORE INFORMATION, CONTACT:

COE PARKER, SIOR

Senior Director

+1 713 963 2825

coe.parker@cushwake.com

B. KELLEY PARKER III, SIOR

Vice Chairman

+1 713 963 2896

kelley.parker@cushwake.com

JOHN F. LITTMAN, SIOR

Executive Managing Director

+1 713 410 4818

john.littman@cushwake.com



©2025 Cushman & Wakefield. All rights reserved. The information contained in this communication is strictly confidential. This information has been obtained from sources believed to be reliable but has not been verified. NO WARRANTY OR REPRESENTATION, EXPRESS OR IMPLIED, IS MADE AS TO THE CONDITION OF THE PROPERTY (OR PROPERTIES) REFERENCED HEREIN OR AS TO THE ACCURACY OR COMPLETENESS OF THE INFORMATION CONTAINED HEREIN, AND SAME IS SUBMITTED SUBJECT TO ERRORS, OMISSIONS, CHANGE OF PRICE, RENTAL OR OTHER CONDITIONS, WITHDRAWAL WITHOUT NOTICE, AND TO ANY SPECIAL LISTING CONDITIONS IMPOSED BY THE PROPERTY OWNER(S). ANY PROJECTIONS, OPINIONS OR ESTIMATES ARE SUBJECT TO UNCERTAINTY AND DO NOT SIGNIFY CURRENT OR FUTURE PROPERTY PERFORMANCE.