

MEDICAL/OFFICE FOR LEASE

3460-3470 BRIARGATE BLVD

COLORADO SPRINGS, CO 80920



**CUSHMAN &
WAKEFIELD**

**Colorado Springs
Commercial**



PROPERTY HIGHLIGHTS

12,724 RSF
BUILDING SIZE

\$16.00 RSF NNN
LEASE RATE

\$8.30 per RSF
(excluding utilities)
NNN EXPENSES

5 spaces per
1,000 RSF
PARKING RATIO

Northeast corner
of Briargate Blvd
& Lexington Dr
LOCATION

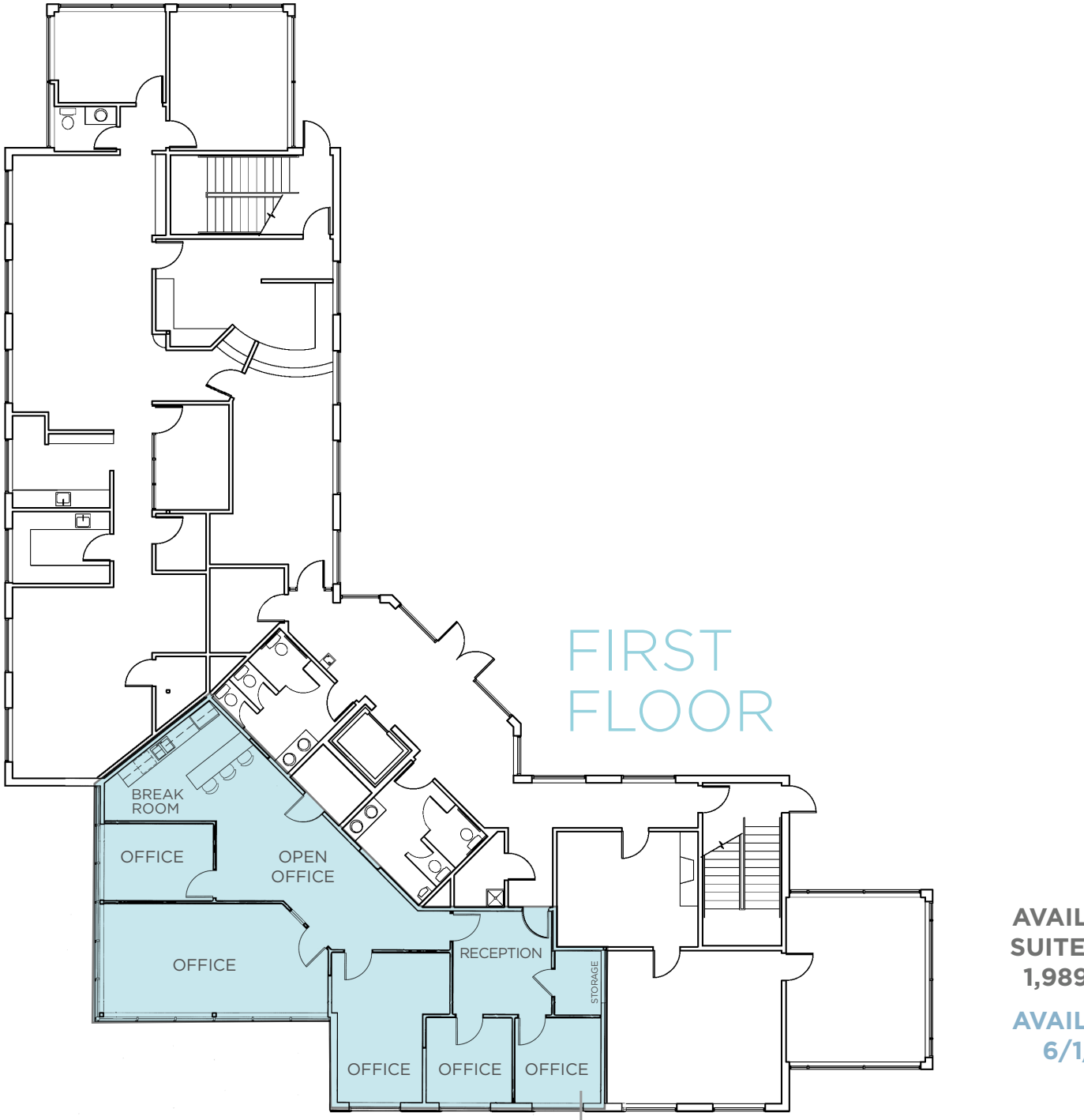
Negotiable
TENANT IMPROVEMENTS

- Northeast Colorado Springs
- Western facing views
- Strong tenant mix
- Attractive exterior



AVAILABLE FLOORPLAN

3460-3470 BRIARGATE BLVD
COLORADO SPRINGS, CO 80920



**AVAILABLE
SUITE 3460
1,989 RSF**

**AVAILABLE
6/1/24**

MEDICAL DRIVE TIMES

**UCHealth Memorial North/
Children's Hospital**
8 Minutes

St. Francis Medical Center
9 Minutes

UCHealth Interquest Medical Center
10 Minutes

St. Francis-Interquest
11 Minutes

UCHealth Grandview Hospital
11 Minutes

Penrose St. Francis Main
19 Minutes

Memorial Hospital
19 Minutes



DAVID SCHROEDER II

Director

+1 719 418 4066

dschroeder@coscommercial.com

90 S Cascade Avenue, Suite 1150
Colorado Springs, CO 80903
coscommercial.com

©2024 Cushman & Wakefield. All rights reserved. The material in this presentation has been prepared solely for information purposes, and is strictly confidential. Any disclosure, use, copying or circulation of this presentation (or the information contained within it) is strictly prohibited, unless you have obtained Cushman & Wakefield's prior written consent. The views expressed in this presentation are the views of the author and do not necessarily reflect the views of Cushman & Wakefield. Neither this presentation nor any part of it shall form the basis of, or be relied upon in connection with any offer, or act as an inducement to enter into any contract or commitment whatsoever. NO REPRESENTATION OR WARRANTY IS GIVEN, EXPRESS OR IMPLIED, AS TO THE ACCURACY OF THE INFORMATION CONTAINED WITHIN THIS PRESENTATION, AND CUSHMAN & WAKEFIELD IS UNDER NO OBLIGATION TO SUBSEQUENTLY CORRECT IT IN THE EVENT OF ERRORS.

