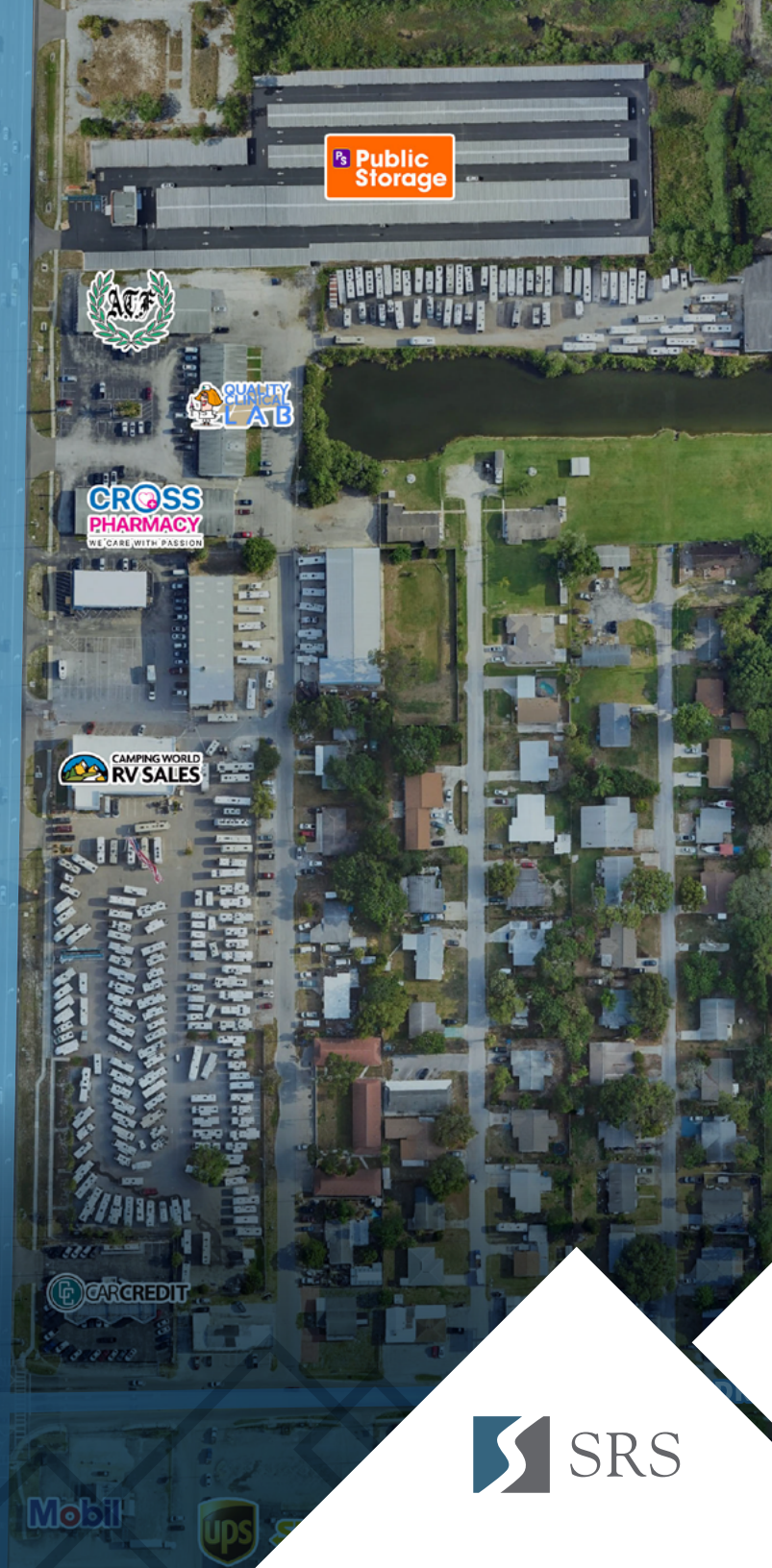




LANGE RD



68,500 VPD



FOR LEASE

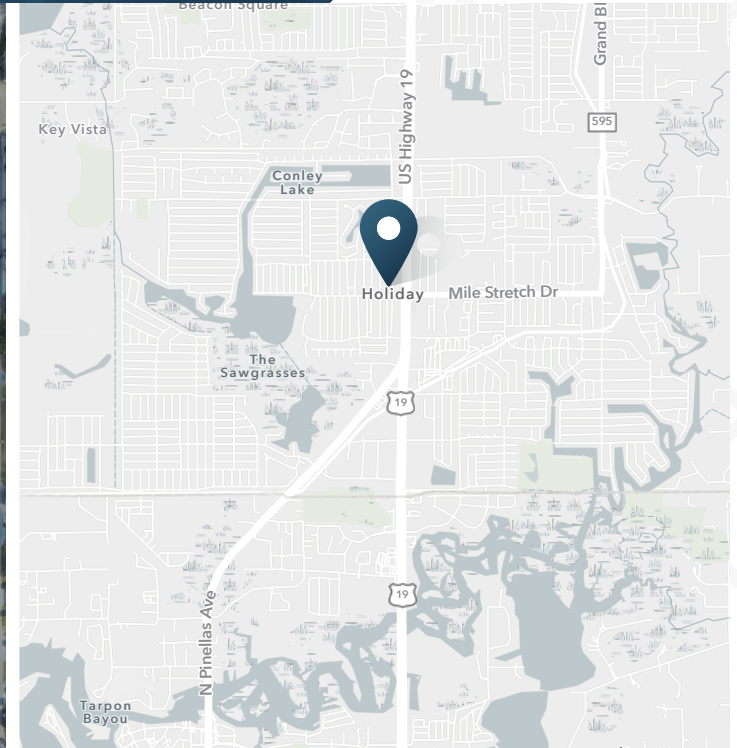
Bank Branch Available

2123 US Hwy. 19 | Holiday, FL 34691



# Bank Branch Available

2123 US Hwy. 19 | Holiday, FL 34691



3.5 Acres  
Available

Contact  
Broker  
Rate

## ABOUT THE PROPERTY

- Excellent Access and Visibility along US Highway 19 Retail Corridor
- 3.50 AC parcel w/ 331' of Frontage on U.S. 19
- 8,570 SF building
- Highly Functional Footprint with 4 Drive-Thru ATM Components

## NEARBY RETAILERS

Walgreens

DUNKIN'



Wawa

DOLLAR GENERAL

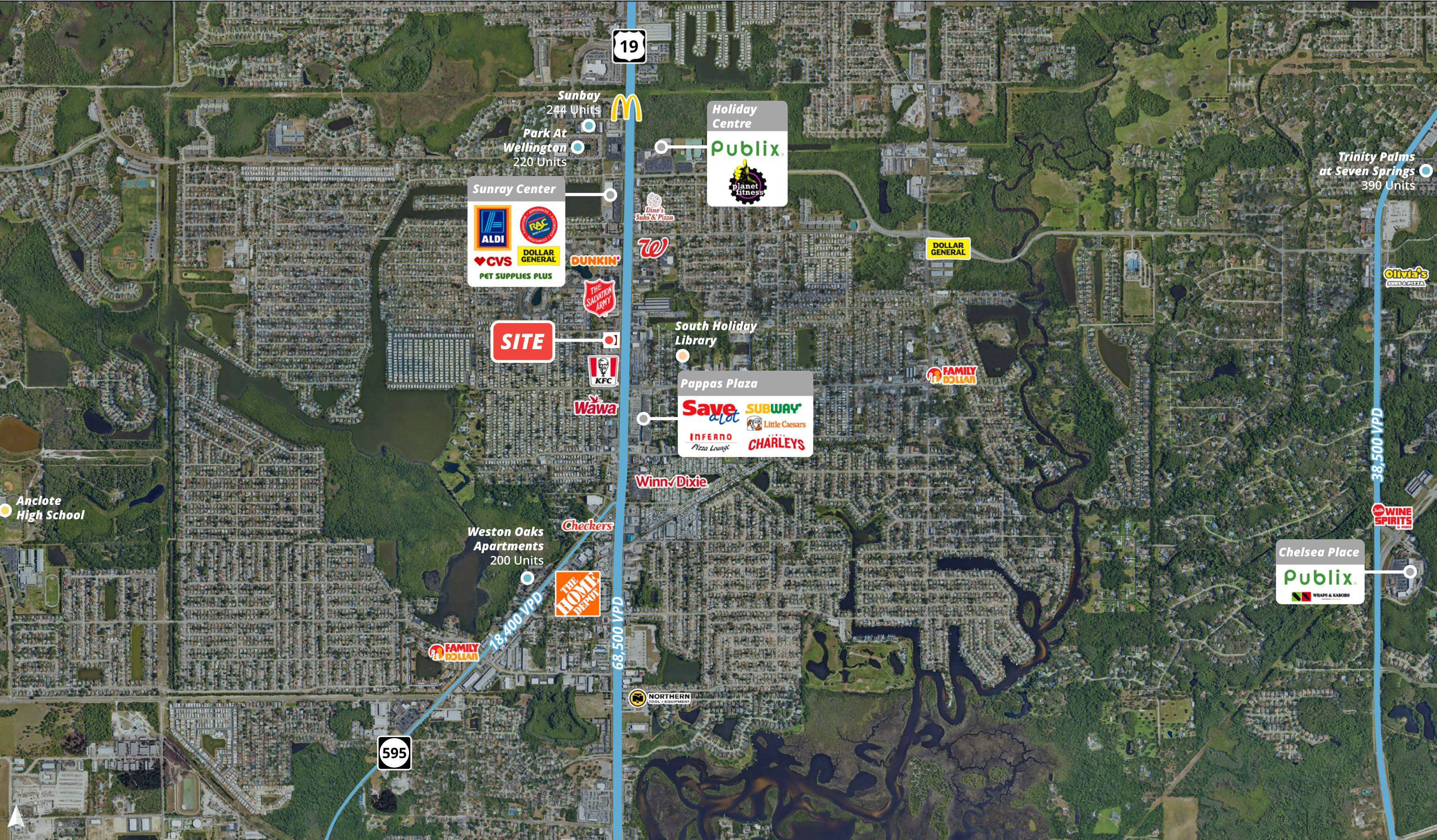
CVS

## TRAFFIC COUNTS

U.S. Hwy 19

68,500 VPD

Year: 2025 | Source: FDOT



# Bank Branch Available

2123 US Hwy. 19 | Holiday, FL 34691



## DEMOGRAPHIC HIGHLIGHTS

### 1 MILE

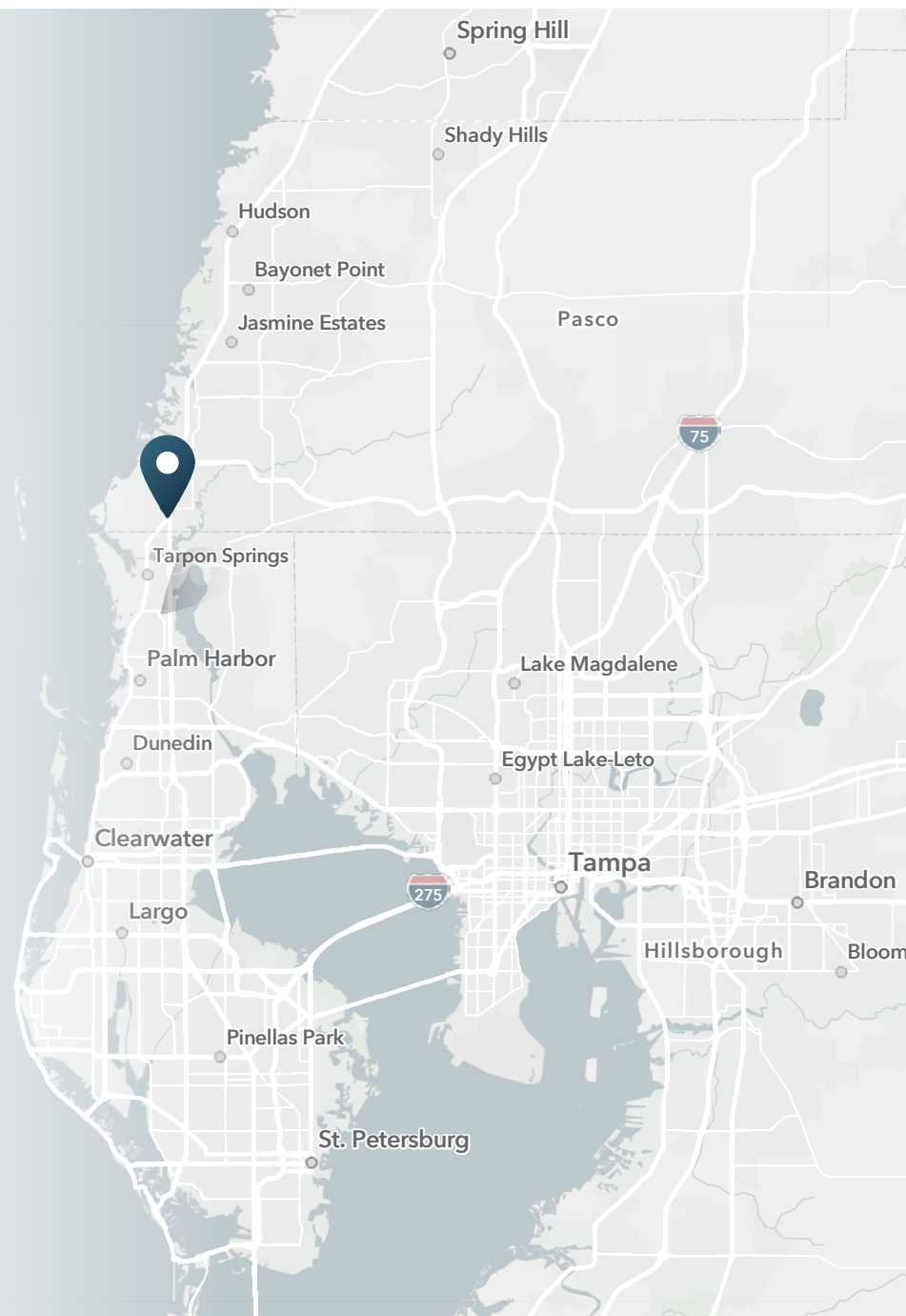
14,156 Population	12,732 Total Daytime Population	\$56,313 Average Household Income	6,386 Total Households
----------------------	---------------------------------------	---	------------------------------

### 3 MILES

68,236 Population	59,234 Total Daytime Population	\$78,663 Average Household Income	29,458 Total Households
----------------------	---------------------------------------	---	-------------------------------

### 5 MILES

141,636 Population	129,470 Total Daytime Population	\$92,711 Average Household Income	61,978 Total Households
-----------------------	--	---	-------------------------------



> **Want more?** Contact us for a complete demographic, foot-traffic, and mobile data insights report.





**SRS Real Estate Partners**  
1501 W. Cleveland St, Suite 300  
Tampa, FL 33606  
813.371.0980

**Chris Stewart**  
813.760.8897  
[chris.stewart@srsre.com](mailto:chris.stewart@srsre.com)

**SRSRE.COM**

©2025 SRS Real Estate Partners LLC. All Rights Reserved.

The information presented was obtained from sources deemed reliable;  
however SRS Real Estate Partners does not guarantee its completeness or accuracy.