

**NEW PUBLIX SHOPPING CENTER**



**Outparcel 1**

**HARBOR ISLE**

- 266 Single Family Homes
- +/- 650 New Residents
- Homes starting at \$500K

**Outparcel 2**

**BRIDGE MARKETPLACE**

**STATE RD 510 & US-1, VERO BEACH, FL 32967**

SCAN TO VIEW LISTING

**LAND**

SCAN TO VIEW LISTING

**RETAIL**

EXCLUSIVE  
RETAIL LEASING:

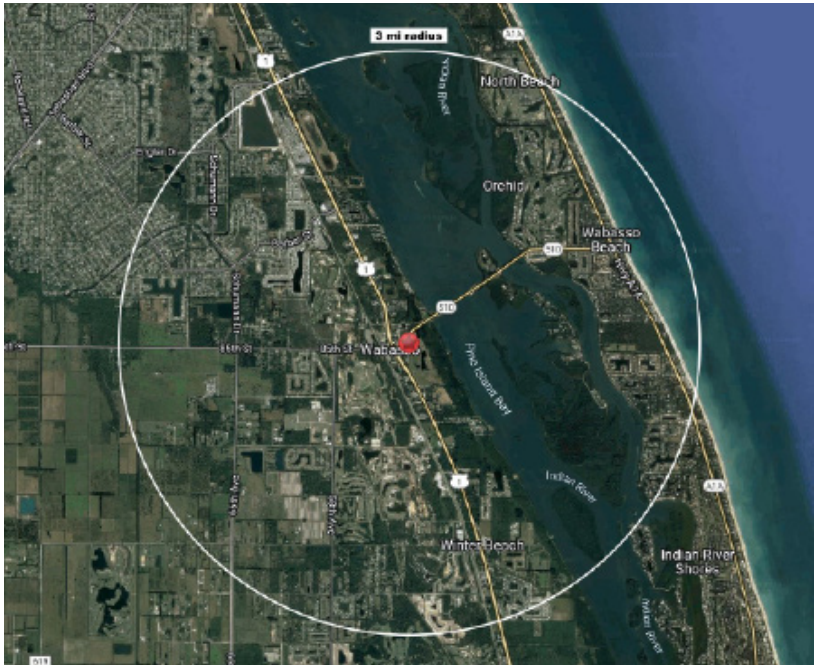
**Alfredo Sanchez**  
Director  
(561) 301-7690  
alfredo.sanchez@landmarkcra.com

**Don DeWoody**  
Principal  
(561) 729-7000  
don.dewoody@landmarkcra.com

**HIGHLIGHTS**

- New Publix Shopping Center
- Delivery Date: 4th Quarter 2024
- Retail Pads Available
- Build to Suit opportunities considered
- Inline shop space adjacent to Publix available
- Great Demographics

OFFERING SUMMARY	
<b>Outparcel 1</b>	0.84 AC
<b>Outparcel 2</b>	0.42 AC
<b>Inline Retail Space</b>	1,500 - 6,400 SF



**DEMOGRAPHICS (3 mi)**



**Population**  
14,202



**Daytime Population**  
4,238



**Average HH Income**  
\$88,883



**Median Age**  
58



**Landmark**

P.O. Box 1625, West Palm Beach, FL 33402  
(561) 729-7000  
www.LandmarkCRA.com

**Alfredo Sanchez**

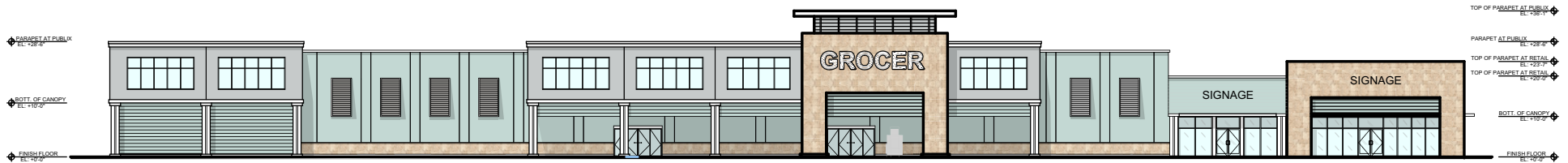
Director  
(561) 301-7690  
alfredo.sanchez@landmarkcra.com

**Don DeWoody**

Principal  
(561) 729-7000  
don.dewoody@landmarkcra.com

**Guy Quattlebaum**

Sales Associate  
(561) 818-2102  
guy.quattlebaum@landmarkcra.com



04 OVERALL - NORTH EAST ELEVATION  
SCALE: 1/8"=1'-0"





**Landmark**

P.O. Box 1625, West Palm Beach, FL 33402  
(561) 729-7000  
[www.LandmarkCRA.com](http://www.LandmarkCRA.com)

**Alfredo Sanchez**

Director  
(561) 301-7690  
[alfredo.sanchez@landmarkcra.com](mailto:alfredo.sanchez@landmarkcra.com)

**Don DeWoody**

Principal  
(561) 729-7000  
[don.dewoody@landmarkcra.com](mailto:don.dewoody@landmarkcra.com)

**Guy Quattlebaum**

Sales Associate  
(561) 818-2102  
[guy.quattlebaum@landmarkcra.com](mailto:guy.quattlebaum@landmarkcra.com)

