

FOR LEASE

*Business Center*  
MISSION, KANSAS



# MISSION PLAZA

Brain Group is pleased to offer space at Mission Plaza at 5201 Johnson Drive in Mission, Kansas available for lease immediately. The business center includes spaces available from 1,487-2,461 square-foot with the potential for a multitude of uses with great cotenancy. There are many restaurants and shopping centers within walking distance.



Square Footage	2,054 -2,461 square feet
Rates	\$20.50/square feet
TI	Negotiable
Parking	3 per 1,000 square feet
Lease Term	Negotiable
Signage	Monument available
Walkability	Amenities Nearby



LEASING INFORMATION:  
Andrew Brain, 816.281.5900  
[abrain@braingroup.co](mailto:abrain@braingroup.co)

 **BRAIN GROUP**

FOR LEASE

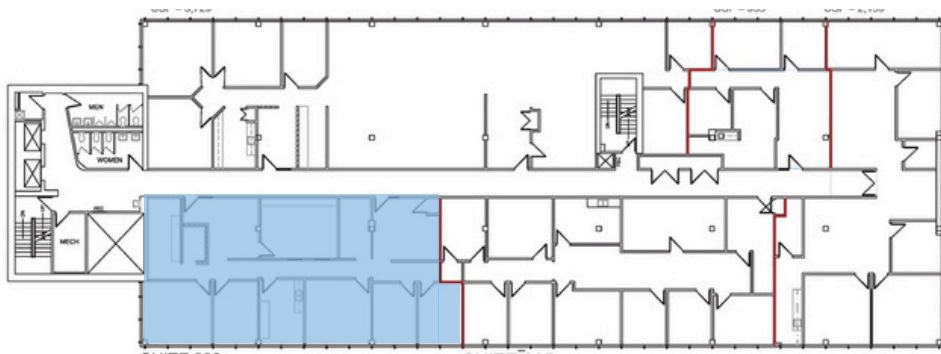
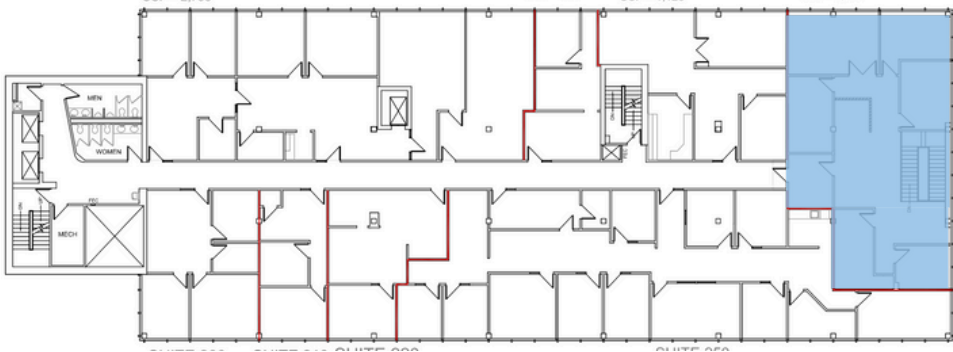
*Business Center*  
MISSION, KANSAS



# MISSION PLAZA

 = VACANT

**Suite 230  
Available  
2,054 RSF**



**Suite 300 Available  
2,461 RSF**

LEASING INFORMATION:  
Andrew Brain, 816.281.5900  
[abrain@braingroup.co](mailto:abrain@braingroup.co)

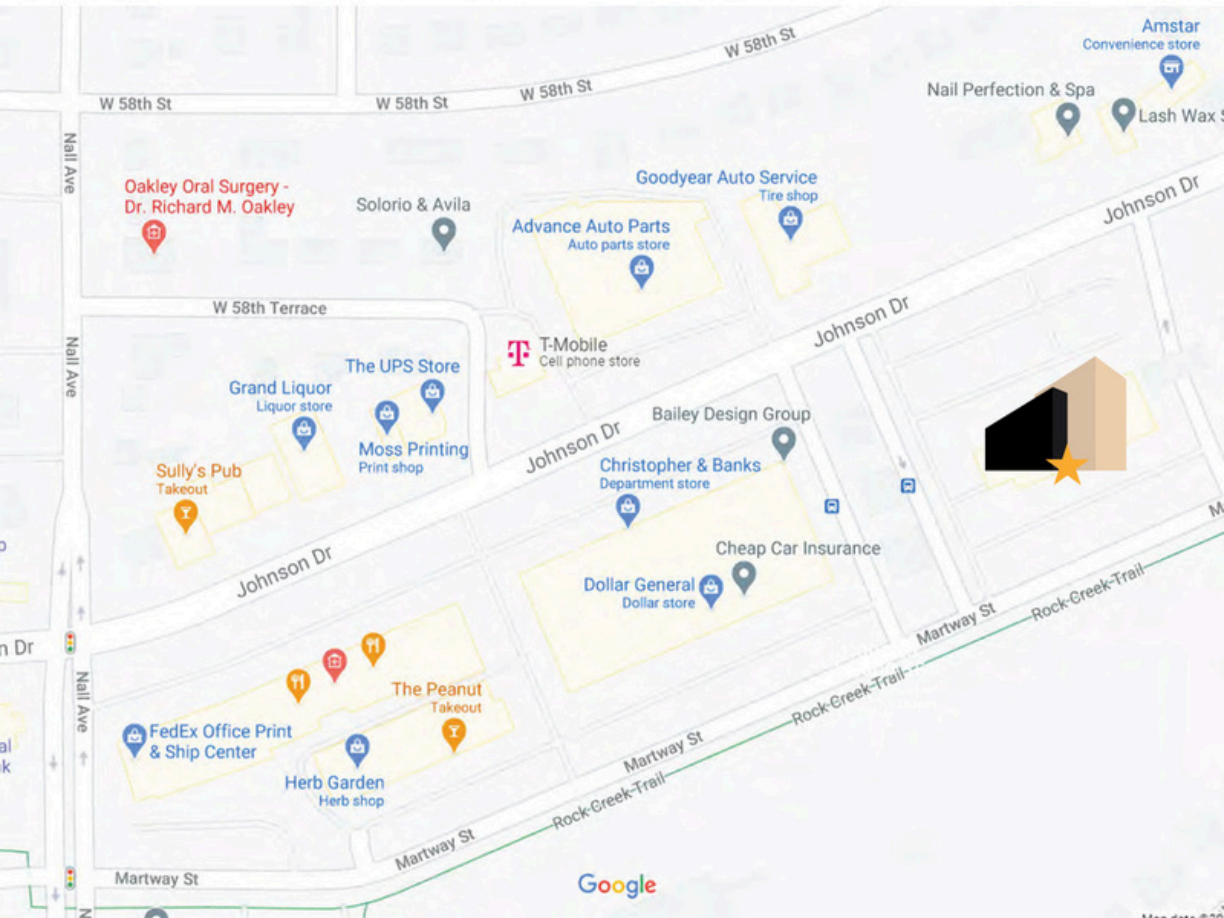


FOR LEASE

*Business Center*  
MISSION, KANSAS



# MISSION PLAZA



LEASING INFORMATION:  
Andrew Brain, 816.281.5900  
[abrain@braingroup.co](mailto:abrain@braingroup.co)



**BRAIN GROUP**