

Pinnacle Point Office Building

11639 South 700 East
Draper, UT 84020



OFFICE BUILDING | FOR SALE

PROPERTY INFORMATION

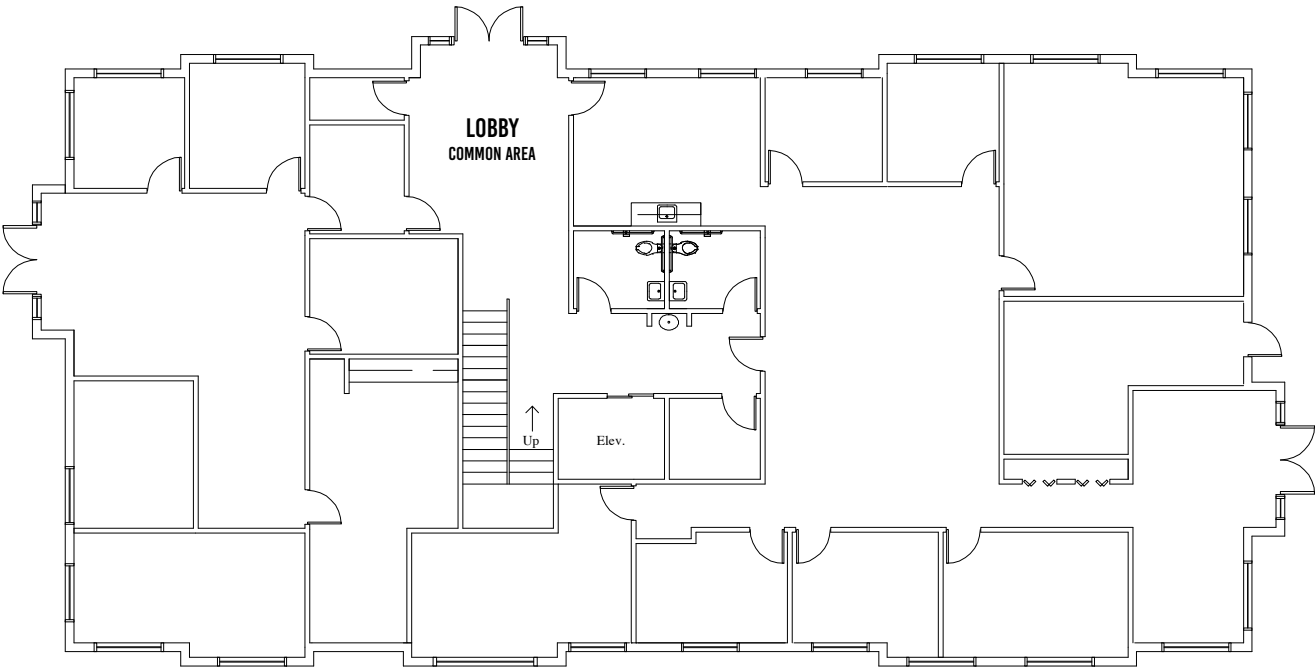
- > \$3,349,000.00
- > Approx. 10,622 SF
- > Owner/user
- > 0.99 AC
- > Built in 2022
- > Elevator
- > Ample parking
- > Located in a great residential area
- > Many nearby restaurants, retail and amenities
- > High demographics

DEMOGRAPHICS

POPULATION	1 MILE	3 MILE	5 MILE
2025 EST	17,338	92,295	231,131
2030 PROJ	17,221	92,559	232,646
HOUSEHOLDS			
2025 EST	5,940	31,207	79,343
2030 PROJ	6,057	32,112	81,895
INCOME			
2025 AVG	\$159,035	\$170,302	\$159,598
2025 MED	\$120,725	\$127,321	\$120,163

Source: ESRI 2025

1ST FLOOR - 4,828 RSF



2ND FLOOR - 4,828 RSF

