

17015 & 17021 ALDINE WESTFIELD

HOUSTON, TX 77073

264,000 SF
AVAILABLE
FOR SALE OR LEASE



**BAKER
HUGHES**
a GE company

urban
Companies | design | development | construction
www.urbancompanies.com

TRANSWESTERN REAL ESTATE SERVICES

HQ RELOCATION OPPORTUNITIES

LAND SIZE: +/- 43 Acres

PARKING RATIOS: 4/1,000

ADDITIONAL BUILDING FEATURES:

- Both buildings are fully furnished
- Former Baker Hughes Headquarters
- All restrooms and elevators are ADA and code compliant



< 5 MINUTES
GEORGE BUSH
INTERNATIONAL
AIRPORT



25 MINUTES
DOWNTOWN
HOUSTON



9 MINUTES
TO I45





THE WOODLANDS

SPRING

**17015 & 17021
Aldine
Westfield Rd.**

CYPRESS

LAKE HOUSTON

CHANNELVIEW

KATY

ENERGY CORRIDOR

GALLERIA

HOUSTON

PORT OF HOUSTON

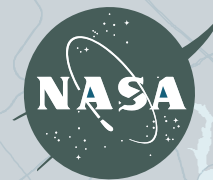
BAYTOWN

PASADENA

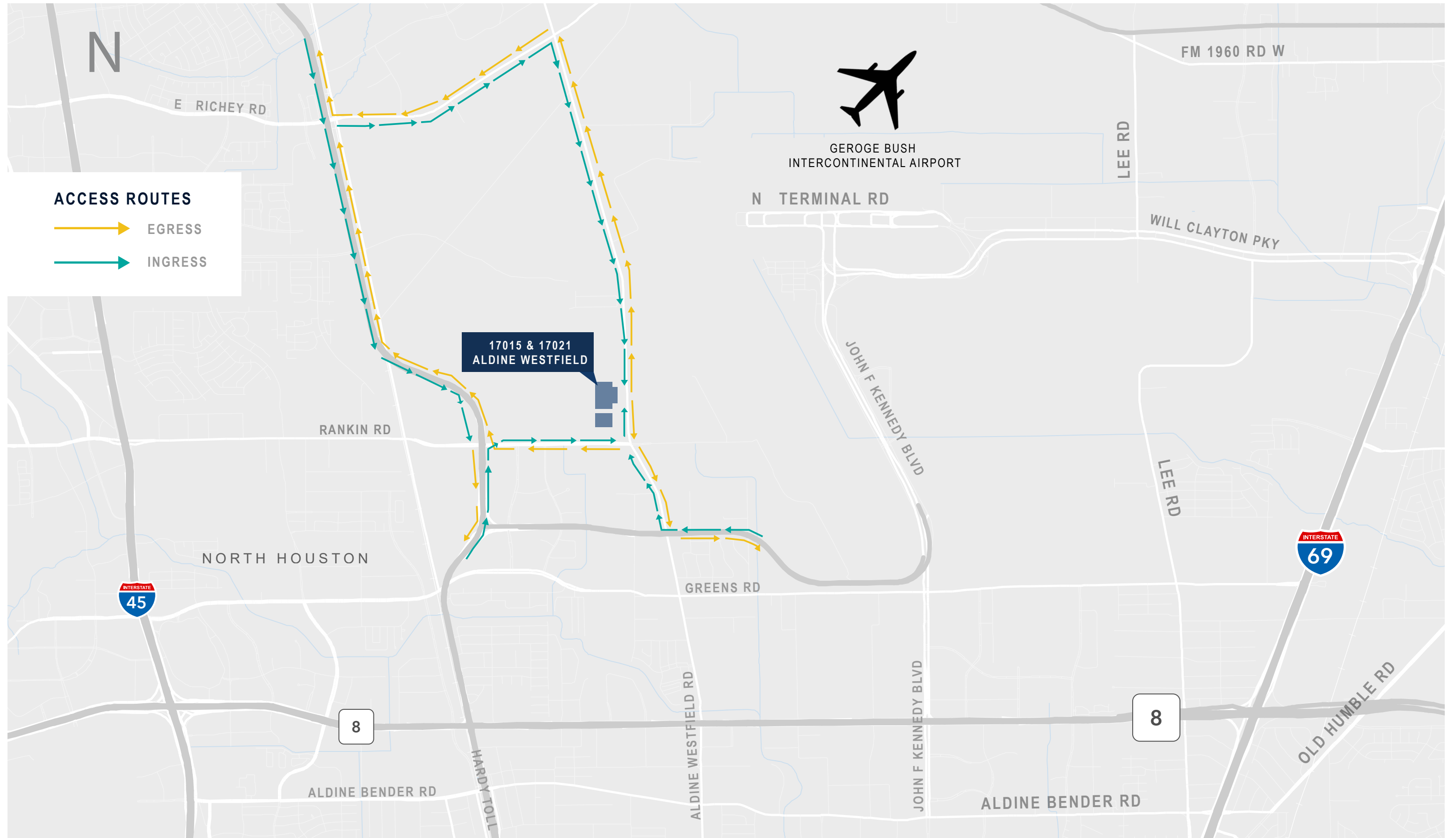
DEER PARK

LA PORTE

SUGAR LAND



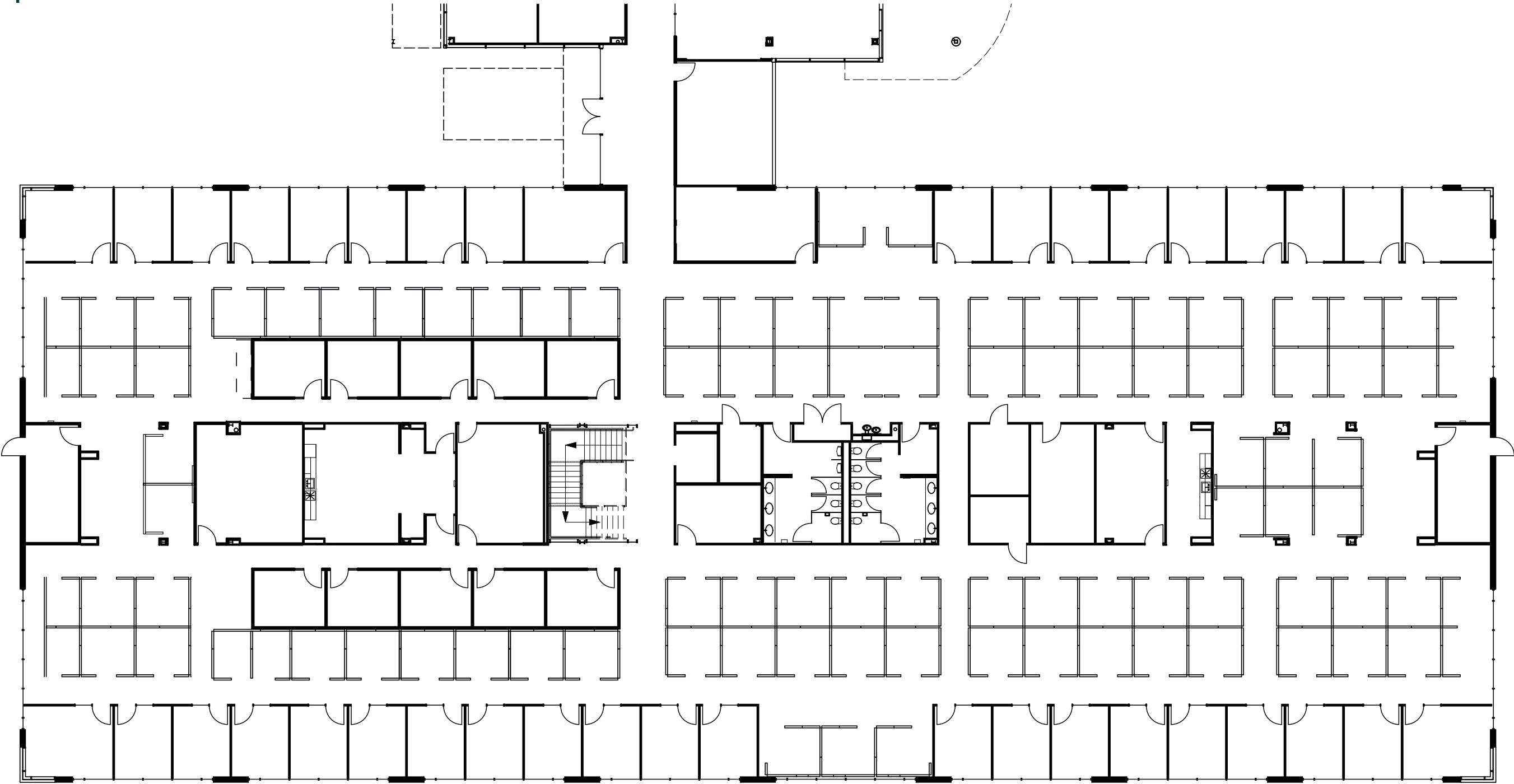
BUILDING ACCESS



FLOOR PLANS

17015 Aldine Westfield

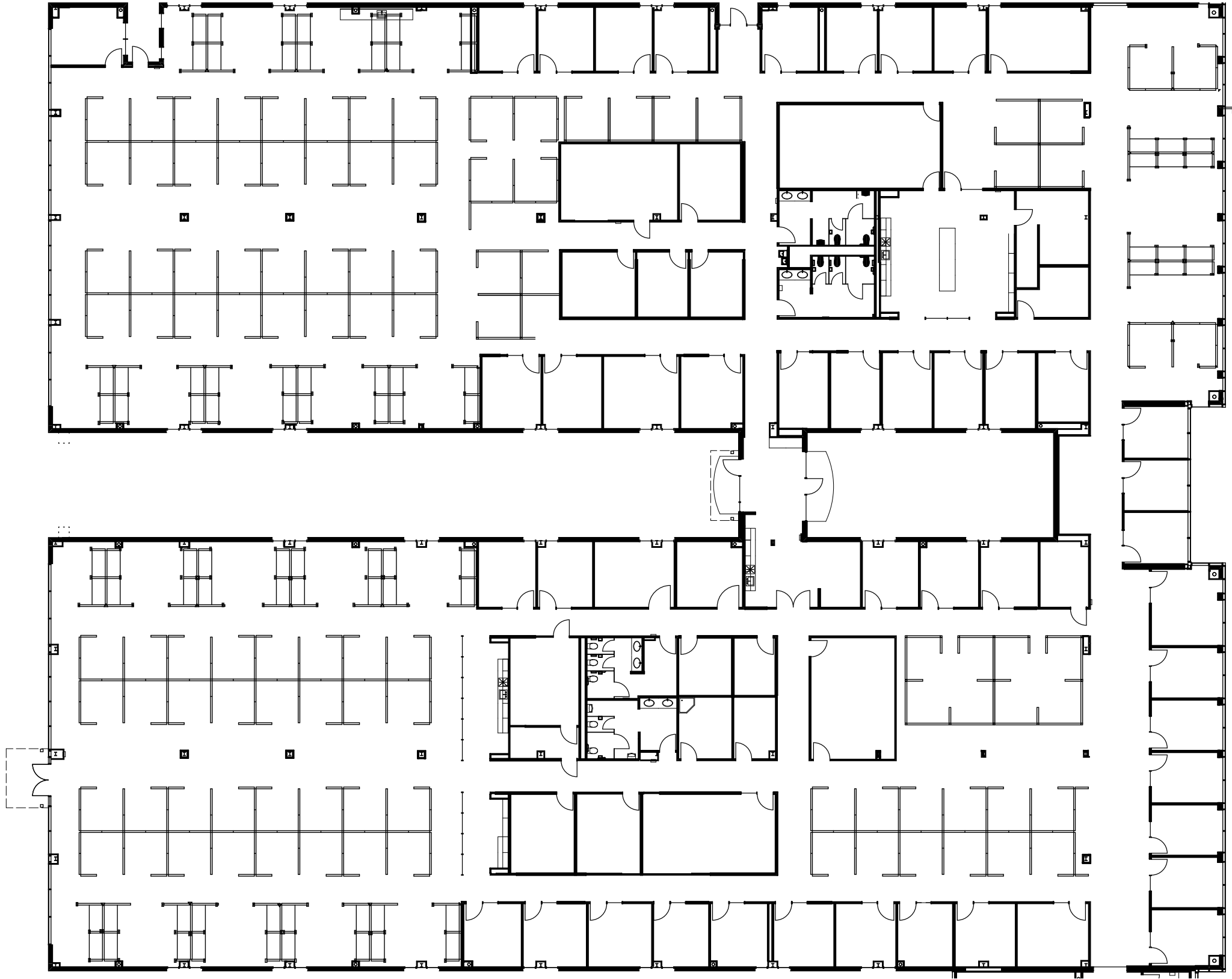
Level 1



FLOOR PLANS

17015 Aldine Westfield

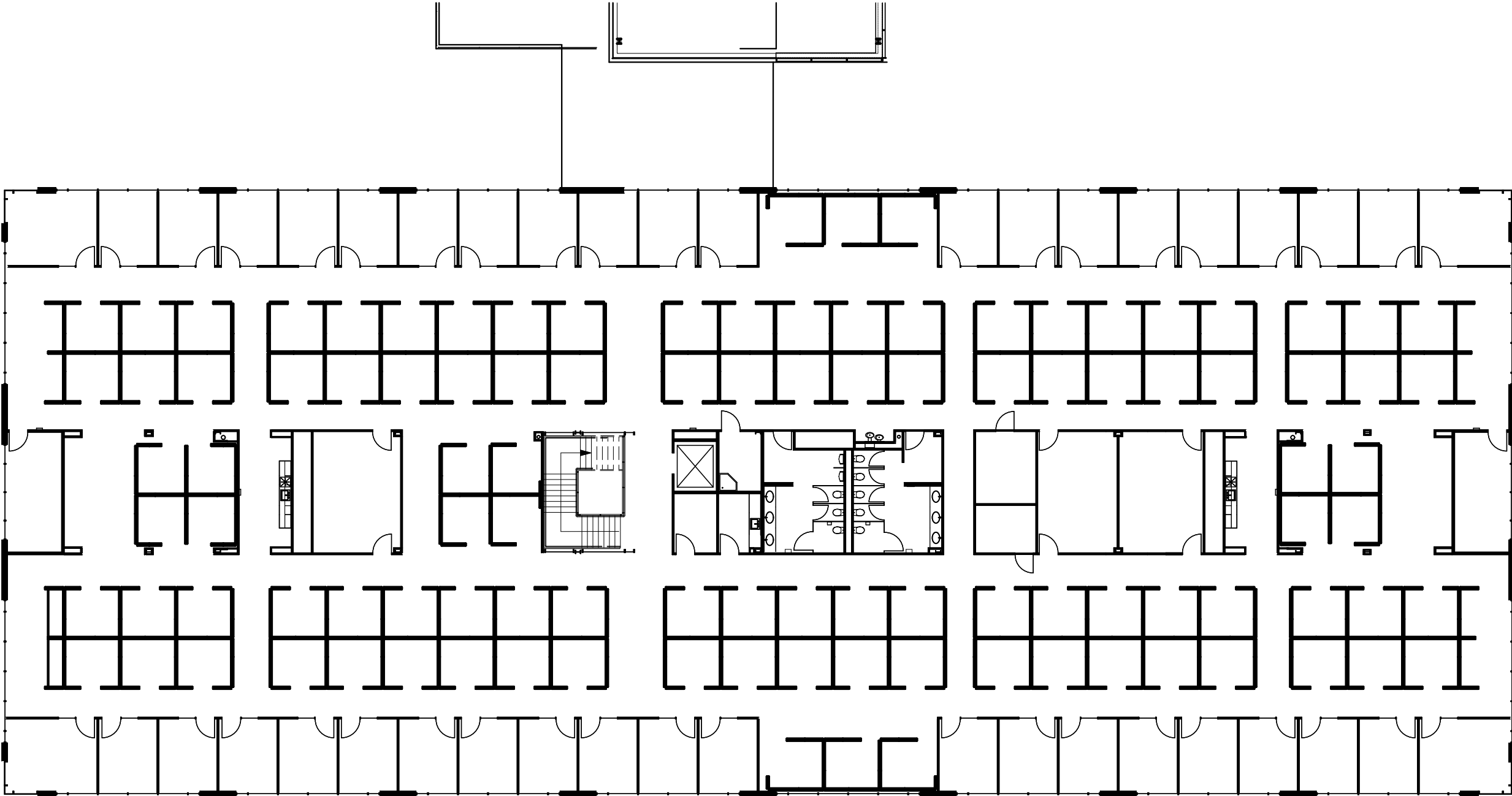
Level 1



FLOOR PLANS

17015 Aldine Westfield

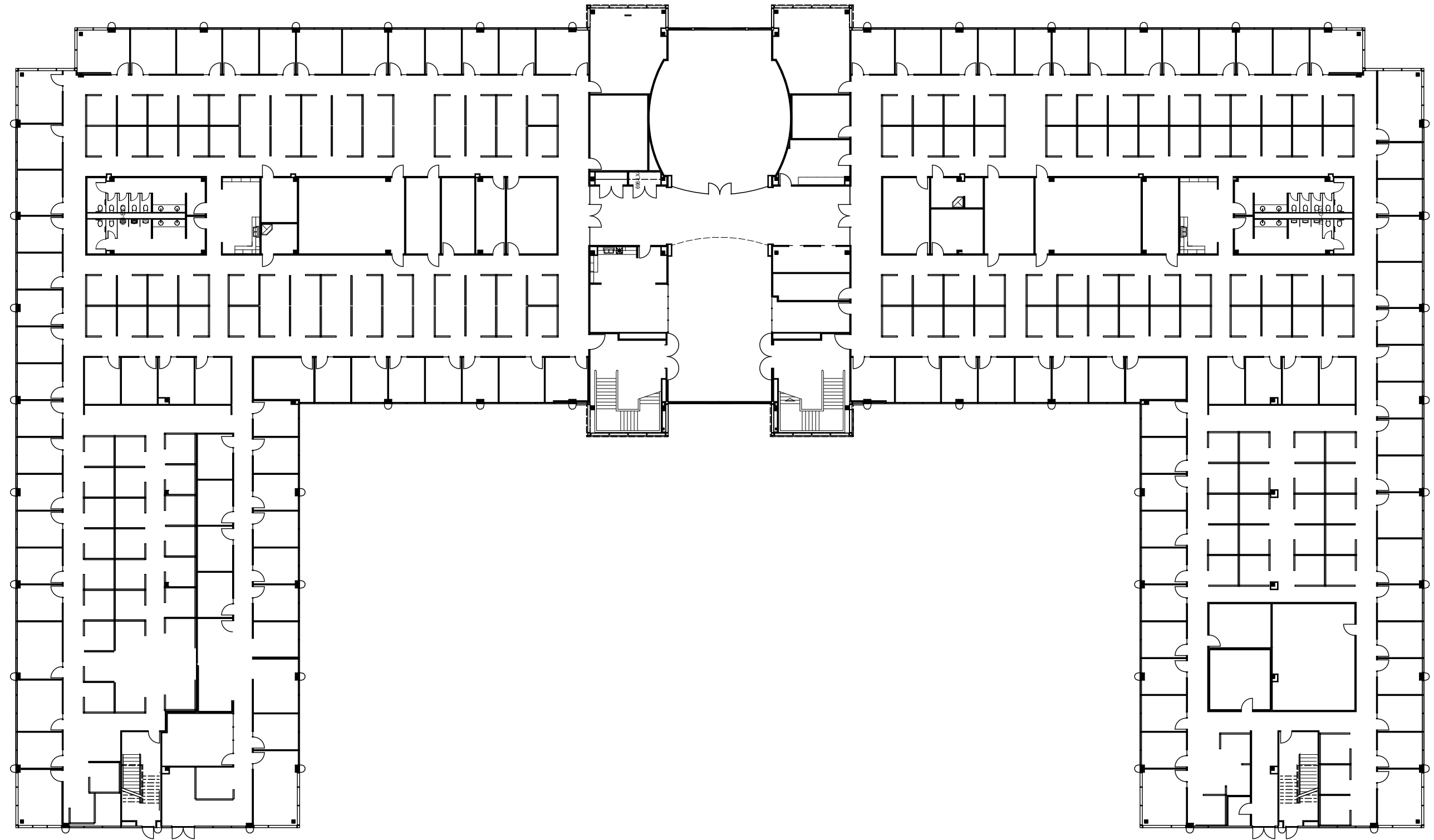
Level 2



FLOOR PLANS

17021 Aldine Westfield

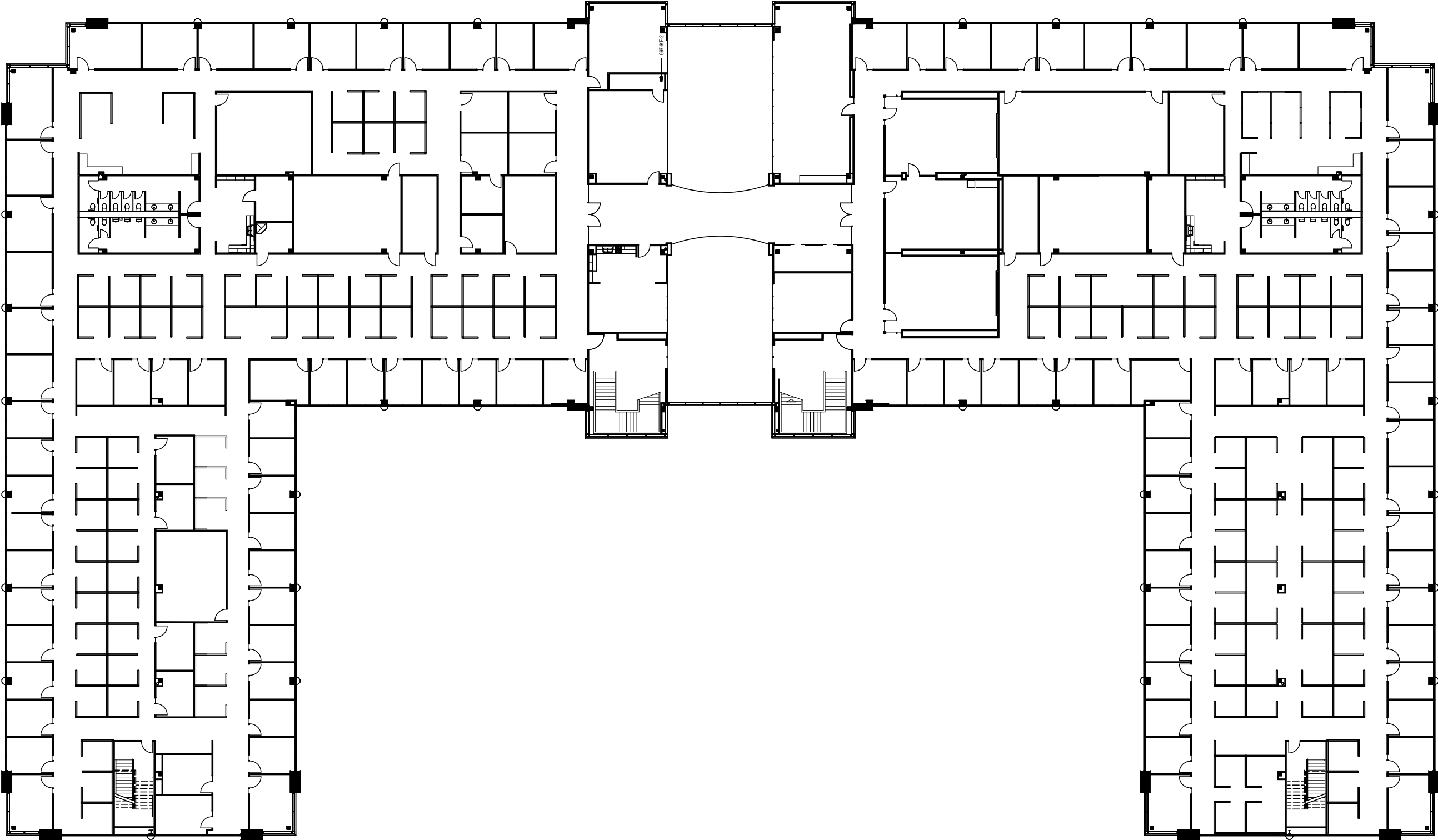
Level 1



FLOOR PLANS

17021 Aldine Westfield

Level 2



FLOOR PLANS

17021 Aldine Westfield

Level 3



FOR LEASING INFORMATION, CONTACT:

PARKER BURKETT

713.407.8716

parker.burkett@transwestern.com

ERIC ANDERSON

713.407.8704

eric.anderson@transwestern.com

 **TRANSWESTERN** REAL ESTATE SERVICES

urban
Companies

design | development | construction
www.urbancompanies.com

