

Office For Lease

MOODY'S

Martin Real Estate Grp

1140 Bethel Ave Ste 201 Port Orchard, WA 98366 | 360-602-1035

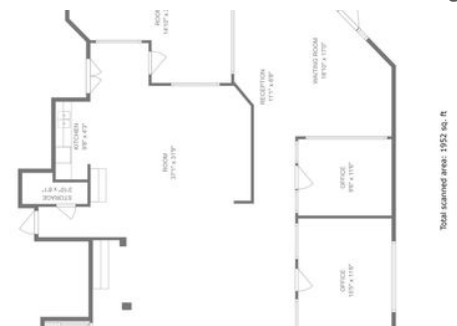
High visibility office space available

1140 Bethel Ave Suite 120, Port Orchard, WA, 98366

Office: General For Lease

Prepared on June 13, 2025

1 of 1 Listings



Listing Details | Office For Lease

Suite	120
Sublease	-
Total Available Space	1,860 SF
Min Div/Max Contig	Not present/1,860 SF
Asking Rate	\$25.00 Annual/SF
Monthly Rate	\$3,875
Lease Type	Gross
Expenses	-
Possession	Now
Lease Terms	60 month
Signage	On Building & Free-Standing

Renewal	Yes
Divisible	Not present
Vacant	Yes
Available Date	6/13/2025
Date Listed	6/13/2025
Last Modified	6/13/2025
Listing ID	42779858
Offices	3
Restrooms	2
Parking Spaces	49

Description

Beautifully updated office space available for lease. The 8' by 42" front door welcomes visitors to the lobby space with grace and style. 2 of the private offices are massive as seen on the attached floor plan. The big one in the back has previously been used as an office space and also as a conference / meeting room. This space has its own independent heating and cooling separate from the rest of the building. This includes an ensuite bathroom as well as an ADA compliant bathroom in the common area. This suite has its own highly visible private entrance on the front corner of the building as well as two access points to the common area. Plenty of parking available and it's on a first come first serve basis. The lease rate is based on power, water, sewer, Security system and garbage being included in the lease rate. Phone or internet service would be the responsibility of the tenant. Come take a look before this opportunity is gone.

Property Features

Location Details

Address	1140 Bethel Ave Suite 120, Port Orch...	Parcels	352401-1-003-2001
Zoning	CMU	In Opportunity Zone	Yes
Submarket	CBA Port Orchard	Name	Village Square
County	Kitsap		

Building Details

Sub Type	General	Parking Spaces	-
Building Status	Existing	Parking Ratio	-
Building Size	11,245 SF	Retail Space	7,178 SF
Land Size	1.59 Acres / 69,260 SF	Office Space	1,956 SF
Number of Buildings	1	In Opportunity Zone	Yes
Property Rent	\$21.02/SF (Average)	Rentable Space	9,134 SF
Number of Floors	2	Number of Tenants	4
Year Built/Renovated	1998, 2017	Security System	Yes
Occupancy Type	Multi-tenant	Rail Service	No
Building Class	B		

Property Listings

1 Listing | 1,860 SF | \$25.00 Annual/SF

Type	Condo	Space Use	Suite	Available Space	Rate	Available
For Lease	No	Office	120	1,860 SF	\$25.00 Annual/SF Gross	6/13/2025

Additional Photos









Contact



TJ Martin
360-340-6786
tj@martinteamnw.com

Martin Real Estate Grp