



STATE OF THE ART FEATURES

- Part of 8-Building Master-planned Industrial Park
- ±2,500 SF Finished Ground Floor Office Suites with ±2,500 SF of Finished Mezzanine
- 4 Dock High Loading Doors
- 1 Grade Level Loading Door
- 30' Clear Height
- 132' Fenced and Secured Concrete Truck Yard
- ESFR Fire Sprinkler System (K25 heads)
- 800-Amp, 277/480V, 3P, 4W House Panel with 1,200-Amp UGPS
- 4-ply Built-Up Roof with 15-yr NDL Warranty
- 2.5% Skylights
- White Scrim Insulation
- 59 Auto Parking Spaces
- Zoned MIP (Manufacturing Industrial Park)
- Close Proximity to Ontario International Airport
- Great Access to I-10, Hwy 60, Hwy 71, and I-15 Freeways

OAKMONT MISSION RAMONA BUSINESS PARK

BUILDING 4

4426 Mission Blvd

±37,143 SF on 1.96 Acres

FOR SALE OR LEASE

For More Information, please contact:

MARK KEGANS, SIOR
909.974.4070
mark.kegans@nrmk.com
CA RE Lic #00866145

RANDY LOCKHART
909.974.4067
randy.lockhart@nrmk.com
CA RE Lic #00974981

RON WASHLE, SIOR
909.974.4071
ron.washle@nrmk.com
CA RE Lic #00978222

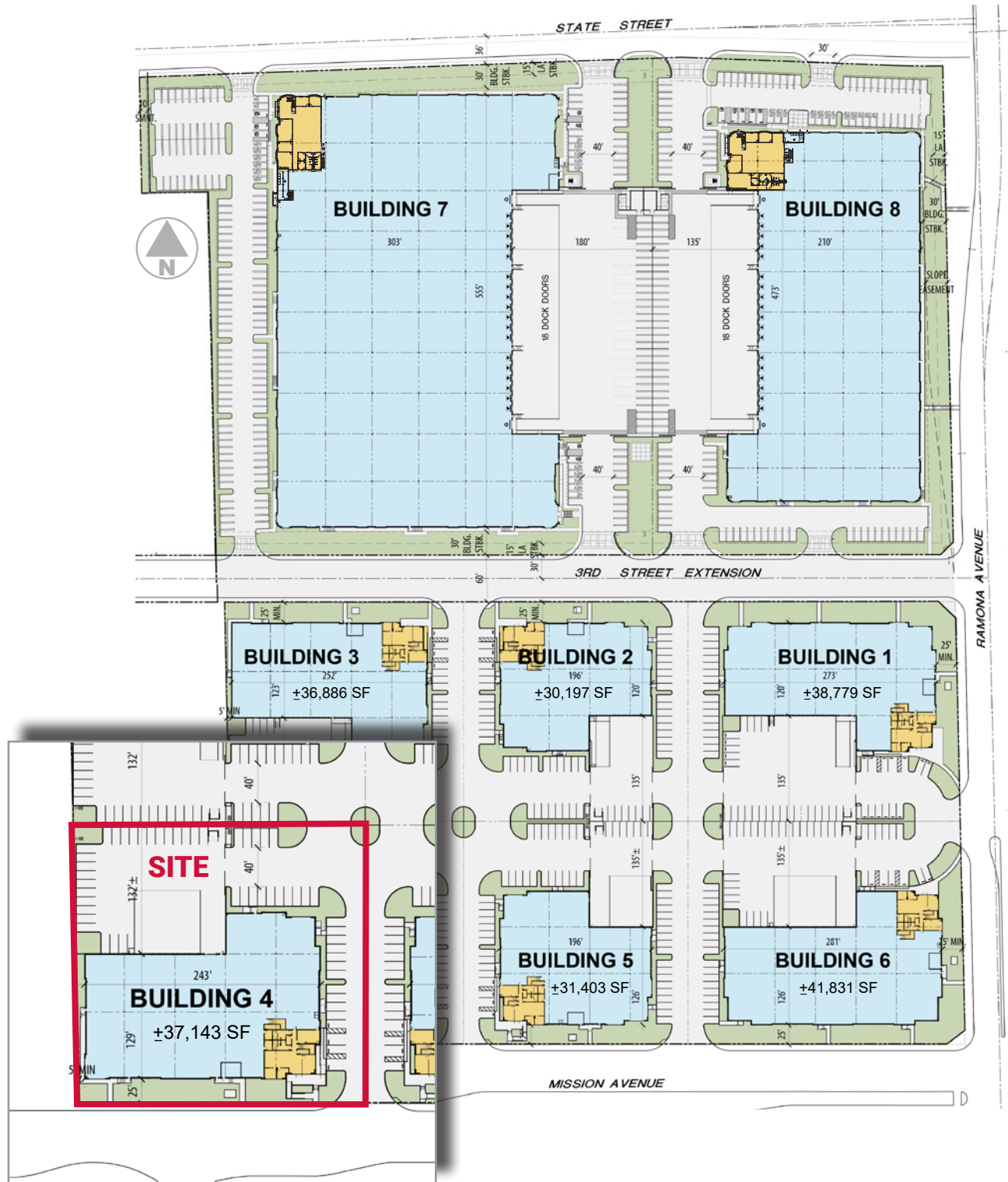
STEVE SPRENGER
909.974.4078
steve.sprenger@nrmk.com
CA RE Lic #01202806

NEWMARK

OAKMONT
INDUSTRIAL GROUP

OAKMONT MISSION RAMONA BUSINESS PARK

Northwest Corner of Mission Blvd & Ramona Ave | Montclair, CA



For more information, please contact:

MARK KEGANS, SIOR
 909.974.4070
 mark.kegans@nrmk.com
 CA RE Lic #00866145

RON WASHLE, SIOR
 909.974.4071
 ron.washle@nrmk.com
 CA RE Lic #00978222

RANDY LOCKHART
 909.974.4067
 randy.lockhart@nrmk.com
 CA RE Lic #00974981

STEVE SPRENGER
 909.974.4078
 steve.sprenger@nrmk.com
 CA RE Lic #01202806

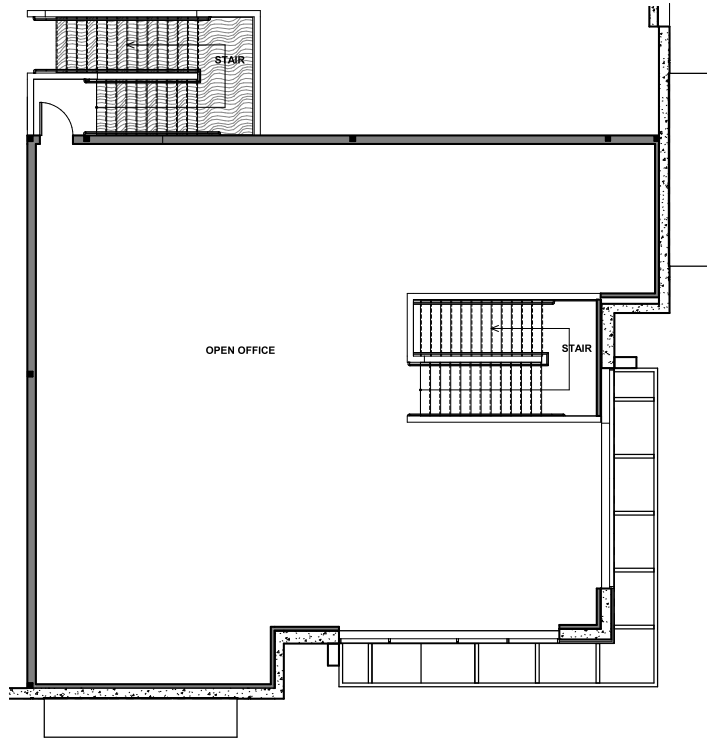
3281 East Guasti Road, Suite 370 | Ontario, CA 91761 | Corporate RE Lic. #01355491 | www.nrmk.com
 Although all information furnished regarding property for sale, rental, or financing is from sources deemed reliable, such information has not been verified and no express representation is made nor is any to be implied as to the accuracy thereof and it is submitted subject to errors, omissions, change of price, rental or other conditions, prior sale, lease or financing, or withdrawal without notice and to any special conditions imposed by our principal.

OAKMONT MISSION RAMONA BUSINESS PARK

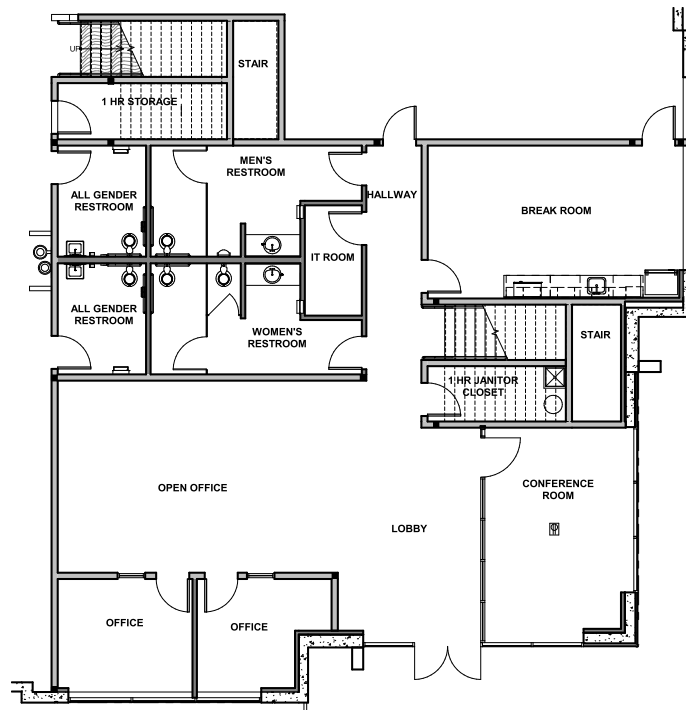
Northwest Corner of Mission Blvd & Ramona Ave | Montclair, CA

BUILDING 4 Office Plans

Mezzanine
±2,500 SF



Ground Floor
±2,500 SF



For more information, please contact:

MARK KEGANS, SIOR
909.974.4070
mark.kegans@nmrk.com
CA RE Lic #00866145

RON WASHLE, SIOR
909.974.4071
ron.washle@nmrk.com
CA RE Lic #00978222

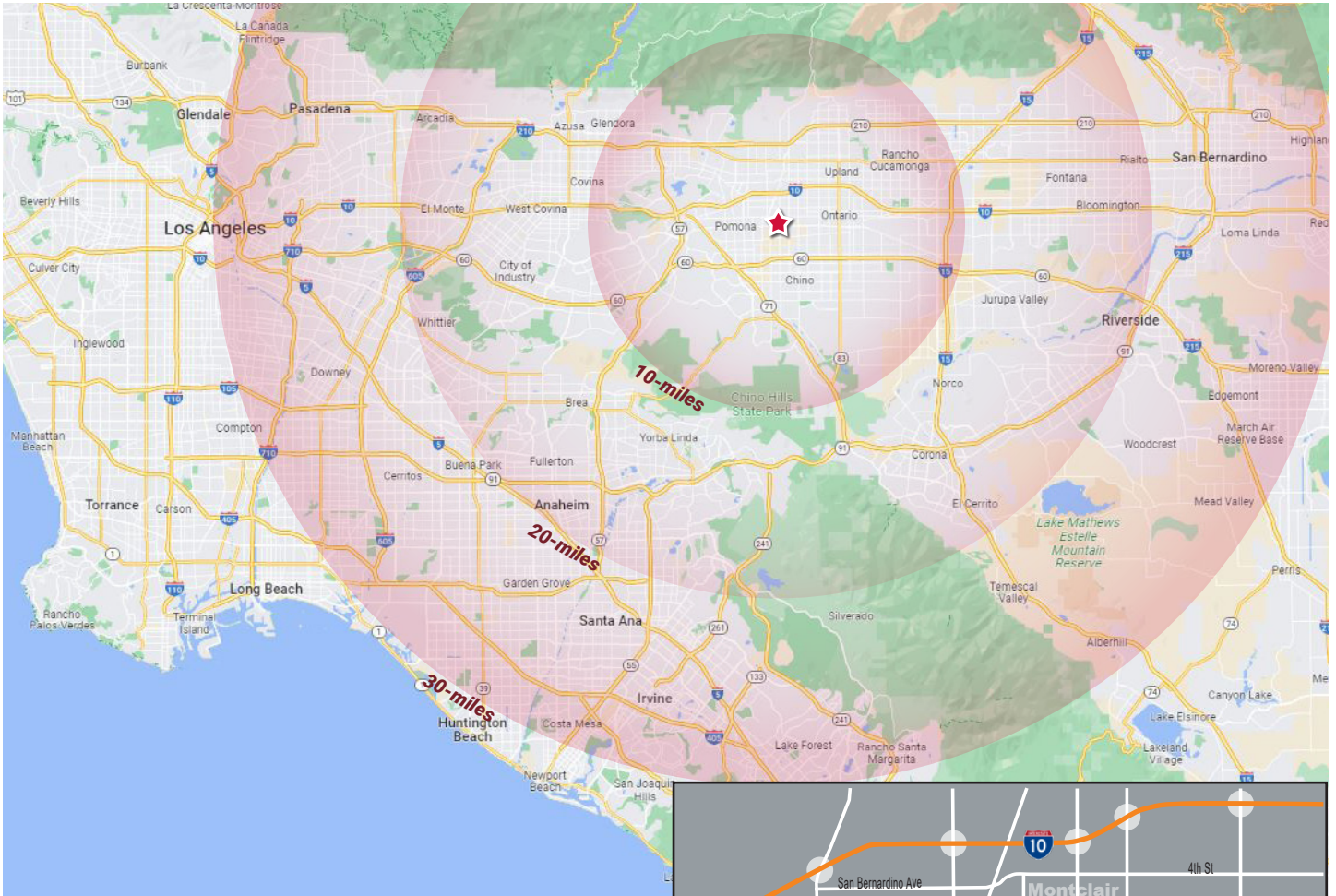
RANDY LOCKHART
909.974.4067
randy.lockhart@nmrk.com
CA RE Lic #00974981

STEVE SPRENGER
909.974.4078
steve.sprenger@nmrk.com
CA RE Lic #01202806

3281 East Guasti Road, Suite 370 | Ontario, CA 91761 | Corporate RE Lic. #01355491 | www.nmrk.com
Although all information furnished regarding property for sale, rental, or financing is from sources deemed reliable, such information has not been verified and no express representation is made nor is any to be implied as to the accuracy thereof and it is submitted subject to errors, omissions, change of price, rental or other conditions, prior sale, lease or financing, or withdrawal without notice and to any special conditions imposed by our principal.

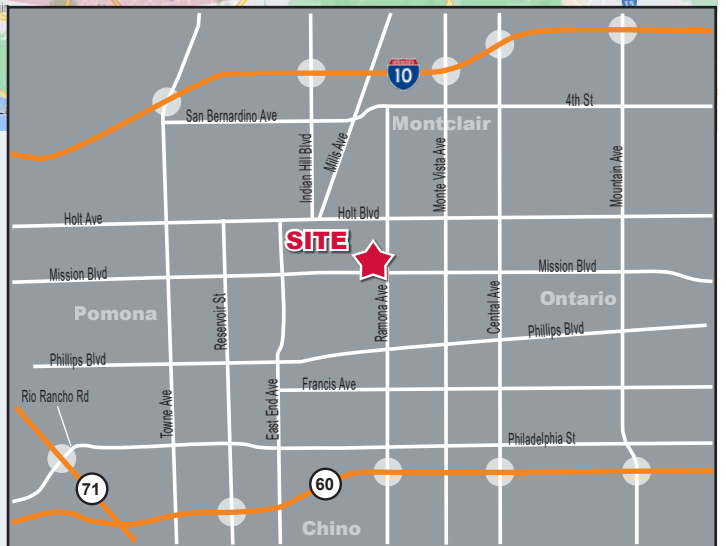
OAKMONT MISSION RAMONA BUSINESS PARK

Northwest Corner of Mission Blvd & Ramona Ave | Montclair, CA



Approximate Drive Distances:

I-10 (via Central Ave)	3.2 miles
Ontario International Airport	6.9 miles
CA-60 (via Ramona Ave)	1.9 miles
CA-71 (via Mission Blvd)	4.4 miles
Downtown Los Angeles	33 miles
John Wayne Airport	35 miles
Port of LA/Long Beach	50 miles
LAX	49 miles



For more information, please contact:

MARK KEGANS, SIOR
 909.974.4070
 mark.kegans@nrmk.com
 CA RE Lic #00866145

RON WASHLE, SIOR
 909.974.4071
 ron.washle@nrmk.com
 CA RE Lic #00978222

RANDY LOCKHART
 909.974.4067
 randy.lockhart@nrmk.com
 CA RE Lic #00974981

STEVE SPRENGER
 909.974.4078
 steve.sprenger@nrmk.com
 CA RE Lic #01202806