

SUNRISE MEDICAL PARK

8391-8399 W OAKLAND PARK BLVD, SUNRISE, FL 33351

PROPERTY SUMMARY

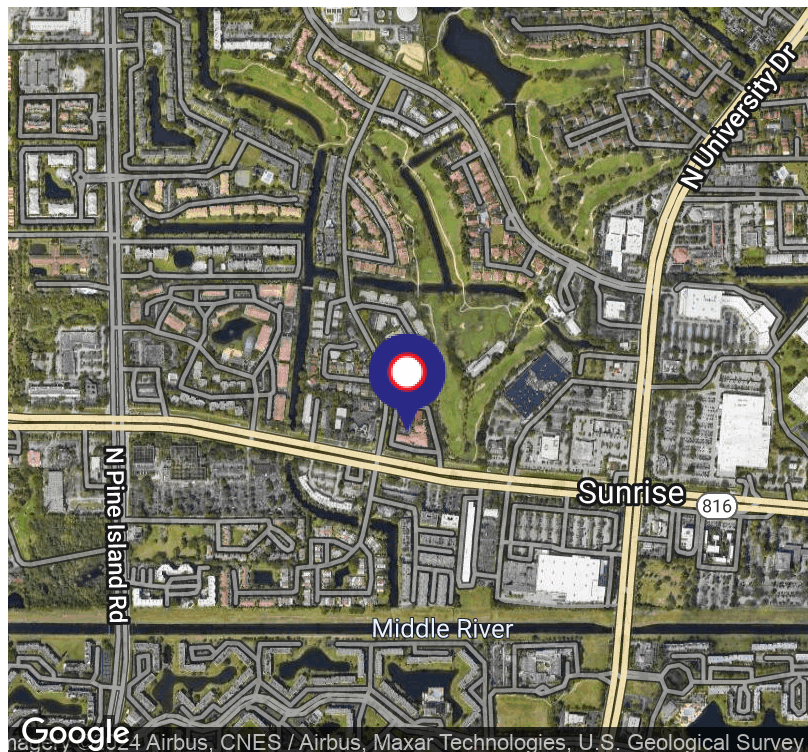


PROPERTY DESCRIPTION

The Sunrise Medical Park was built in 1992 and is a 28,798 SF Class A medical office campus. The park is composed of 4 single story buildings with convenient drive-up access. It is located on Oakland Park Boulevard between University Drive and Pine Island Road and it is within 4 miles of 3 hospitals. All of the spaces are Class B turn-key medical offices, and the park overlooks the Bridges at Springtree Golf Club and is just 10 minutes to the Sawgrass Expressway, University Hospital, Westside Hospital and Florida Medical Center. Sunrise Medical Park is zoned B-2 for General Commercial Zoning.

PROPERTY HIGHLIGHTS

- Medical office campus with 4 single-story buildings
- Suite Sizes from 1,300 Sq. Ft. - 5,000 Sq. Ft.
- Ample parking at 6 spaces per 1,000 sf
- Easily accessible for seniors
- Great visibility on Oakland Park Blvd between University Drive and Pine Island Road



HALEY PRESSER

Property Manager / Sales Associate
Direct: 954.491.5505 | Cell: 954.254.5396
haley@levyai.com



FOR LEASE

SUNRISE MEDICAL PARK

8391-8399 W OAKLAND PARK BLVD, SUNRISE, FL 33351

SUNRISE MEDICAL PARK PHOTOS



HALEY PRESSER

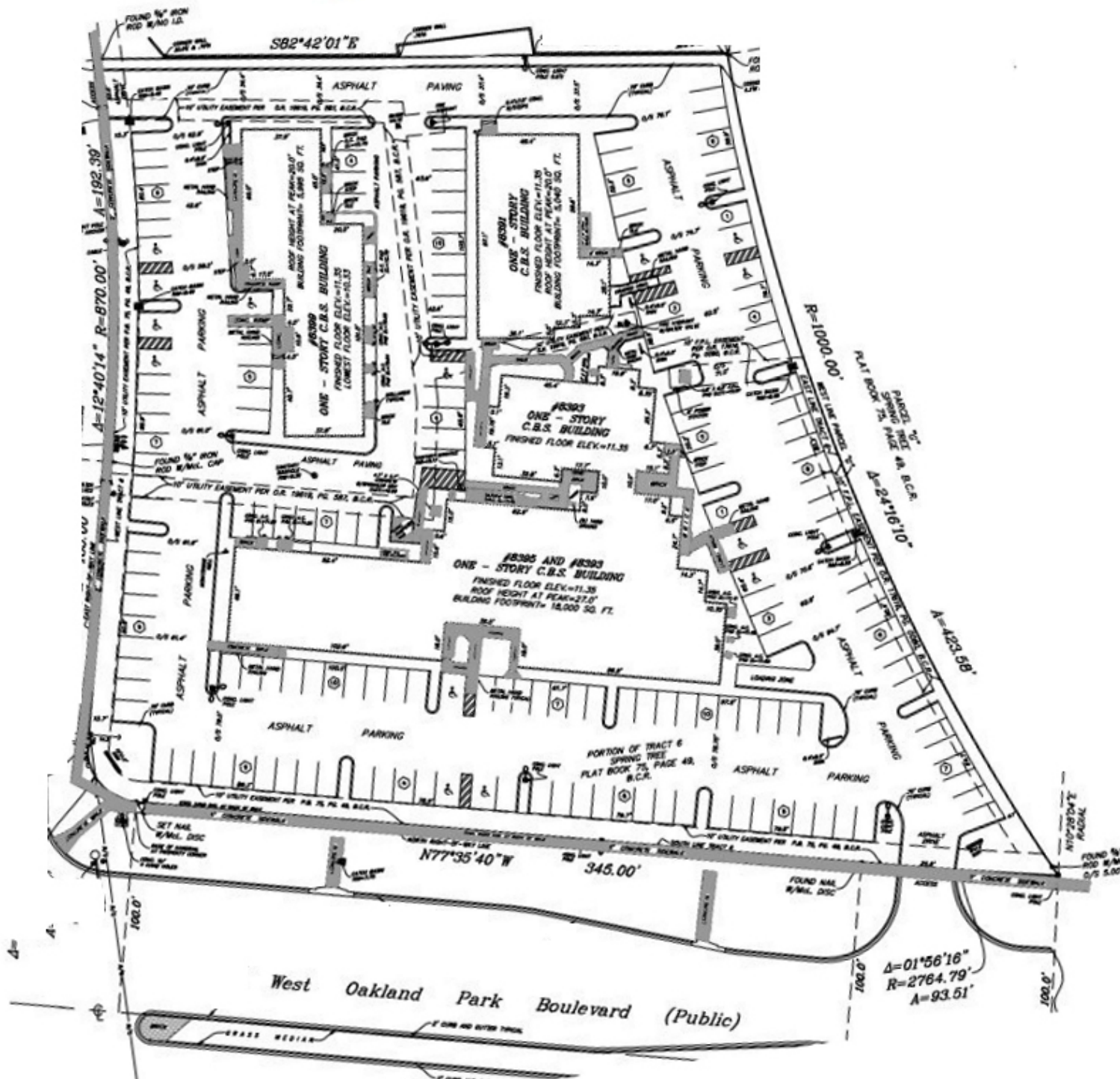
Property Manager / Sales Associate
Direct: 954.491.5505 | Cell: 954.254.5396
haley@levyrai.com



SUNRISE MEDICAL PARK

8391-8399 W OAKLAND PARK BLVD, SUNRISE, FL 33351

SUNRISE MEDICAL PARK SURVEY



HALEY PRESSER

Property Manager / Sales Associate
Direct: 954.491.5505 | Cell: 954.254.5396
haley@levyrai.com

