

HAVERHILL, MA

60 NEWARK STREET

60,280 SF AVAILABLE
FOR LEASE



R.W. HOLMES
COMMERCIAL REAL ESTATE

FOR INFORMATION CONTACT:

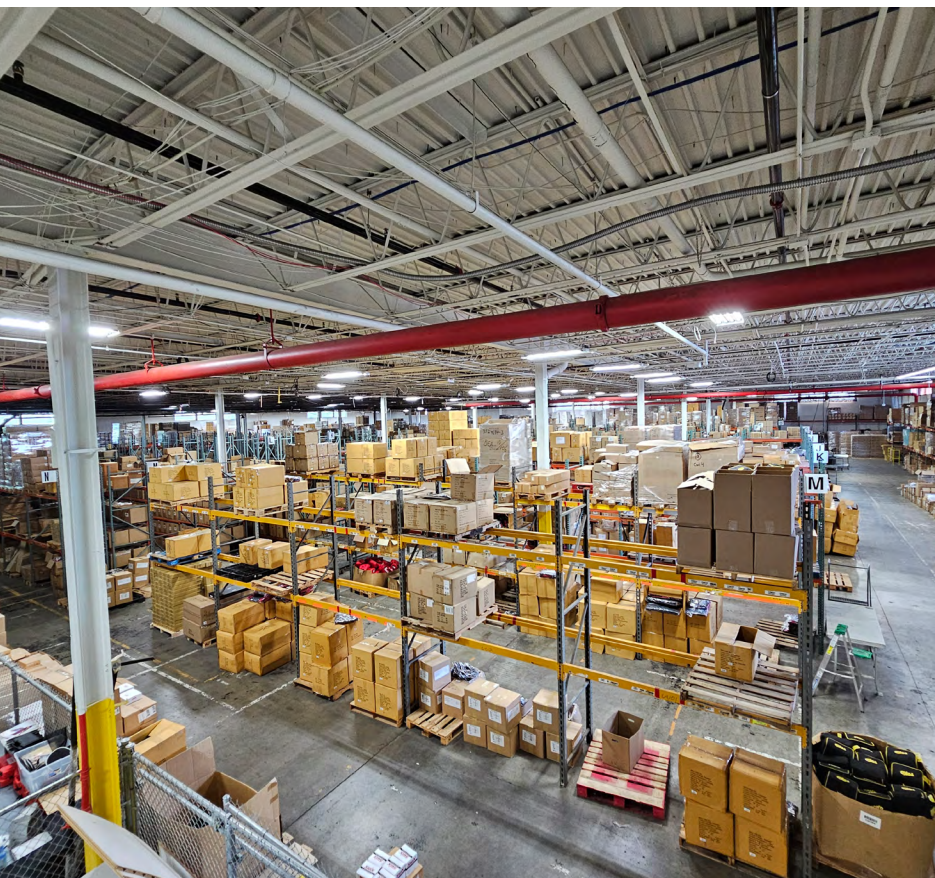
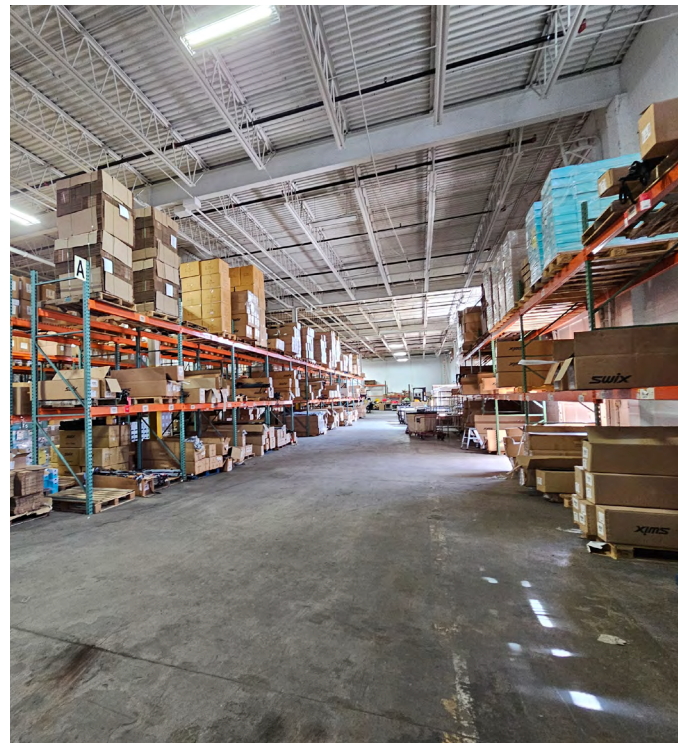
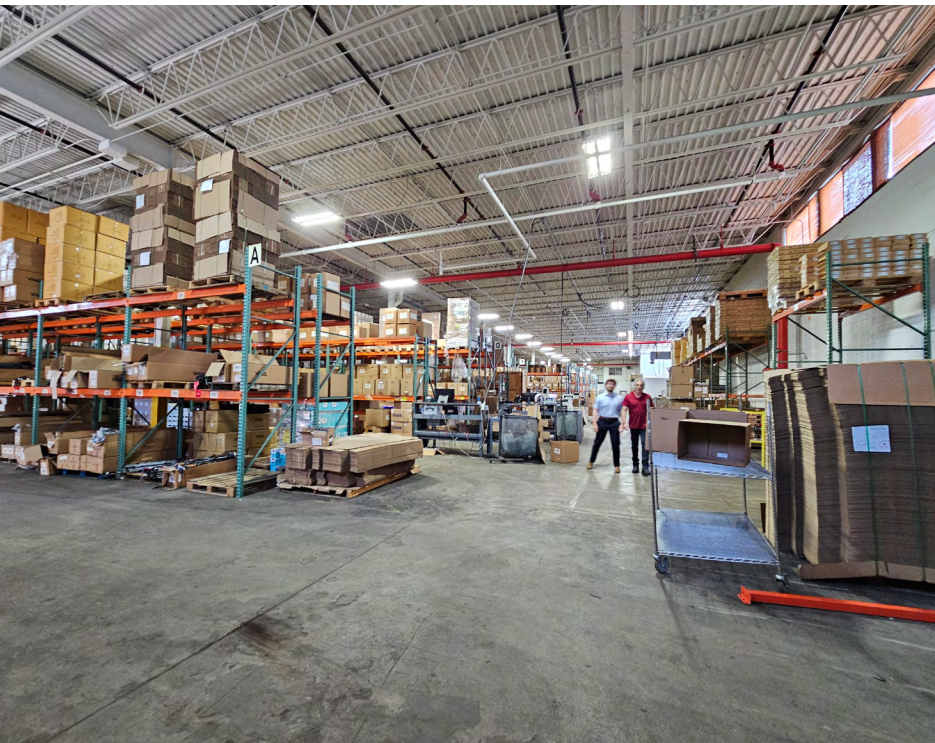
MIKE OGASAPIAN, SIOR
MIKEO@RWHOLMES.COM
(781) 439-5945

BUILDING SIZE	92,280 SF	CLEAR HEIGHT	19'7" TO THE JOIST
AVAILABLE SF	+/- 60,280 SF (+/- 6,280 SF OFFICE/54,000 SF WAREHOUSE)	LOADING	FOUR (4) TAILBOARD-HEIGHT LOADING DOCKS, ONE (1) 13'10" X 11'11" ROLL-UP DOOR
TIMING	AVAILABLE JUNE 2026	LIGHTING	WAREHOUSE LIGHTING UPGRADED TO LED WITH MOTION SENSORS IN 2023
LOT SIZE	+/- 6.0 AC	POWER	1,600 AMP AT 480 VOLTS, 3 PHASE
YEAR BUILT	1973	UTILITIES	TOWN WATER AND SEWER, GAS AND DISCOUNTED RENEWABLE ELECTRICITY AVAILABLE FROM THE LARGEST ROOFTOP SOLAR SYSTEM IN HAVERHILL, GENERATING 650K KWH ANNUALLY
SPRINKLER	WET SYSTEM, UPGRADED TO HIGH HAZARD SYSTEM IN 2024	CONSTRUCTION	CMU BLOCK AND STEEL TRUSS ON CONCRETE SLAB
COLUMN SPACING	30' X 44"	ROOF	WHITE REFLECTIVE PVC ROOF INSTALLED 2012 UNDER WARRANTY UNTIL 2032
HVAC	FULL TEMPERATURE CONTROL IN THE OFFICE SPACE VIA A NEWLY INSTALLED RTU, TWO (2) HIGH EFFICIENCY GAS FIRED HEATERS IN THE WAREHOUSE.		
PARKING	50 SPACES		

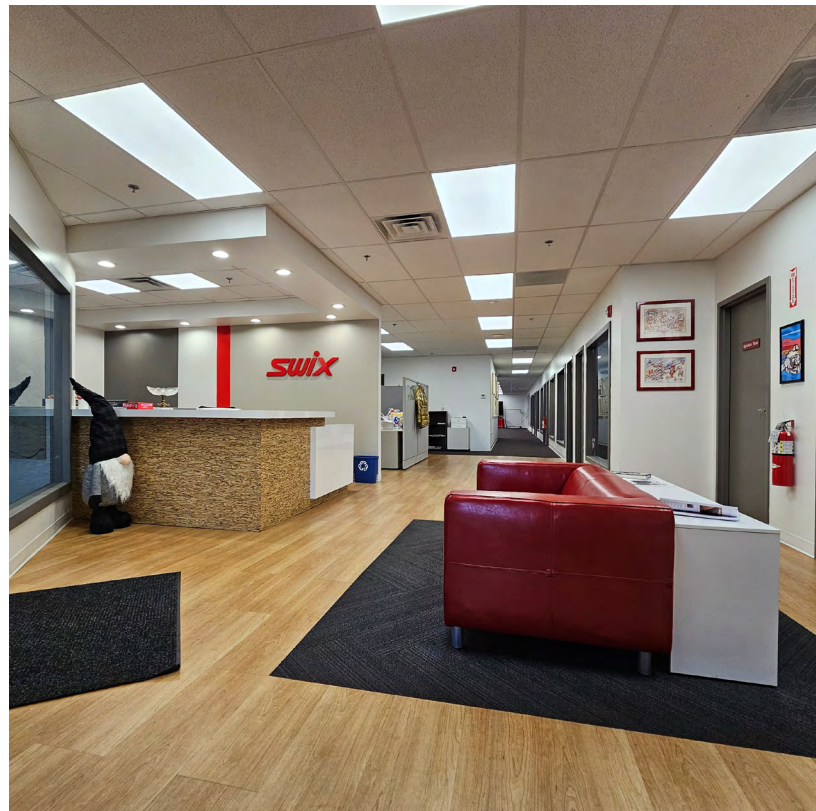
All information furnished regarding property for sale, rental or financing is from sources deemed reliable. No representation is made as to the accuracy thereof and is submitted subject to errors, omissions, change of price, rental or other conditions, prior sale, lease or financing, or withdrawal without notice.

RWHOLMES.COM

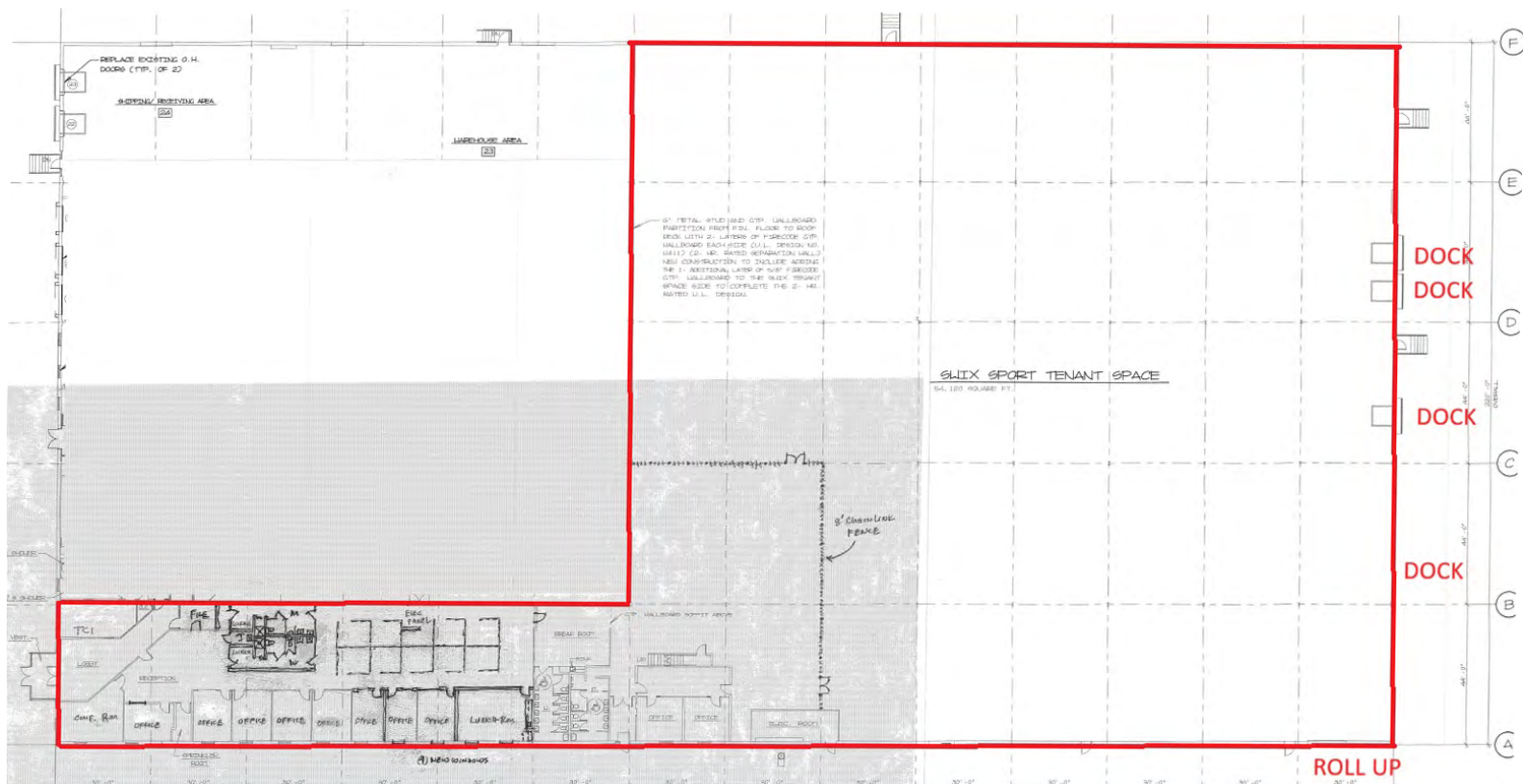
WAREHOUSE AREA



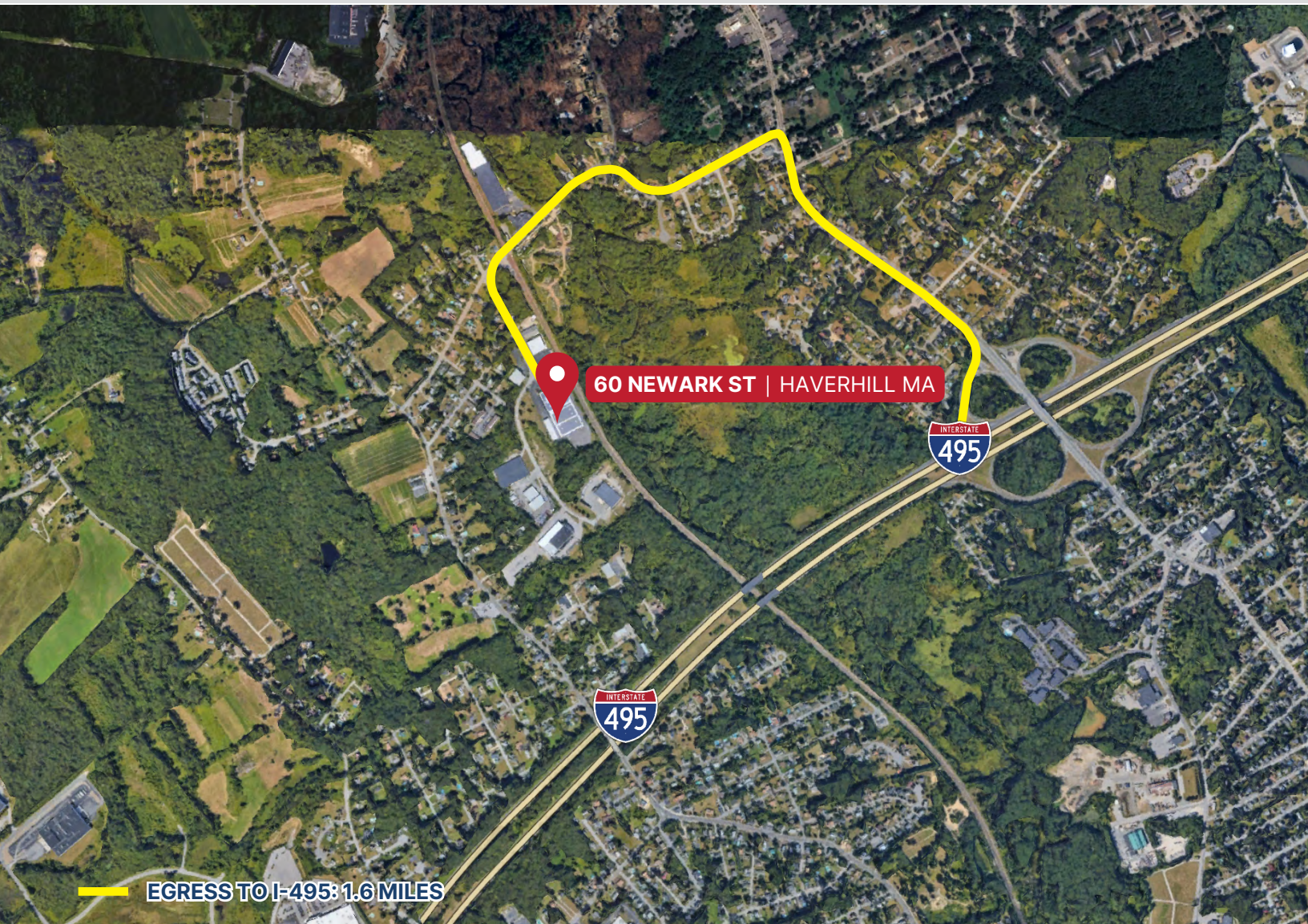
OFFICE AREA



FLOOR PLAN



LOCATION & ACCESS



AREA MANUFACTURERS

- Coastal Industries, Inc.
- BRAV USA INC.
- Magellan Aerospace
- Monogram Foods
- Firan Technology Group (FTG)
- Plastic Distributors and Fabricators, Inc.
- Lightspeed Manufacturing
- Haverhill Steel & Salvage
- Bradford Labs
- Cedar's Mediterranean Foods
- Dynawave Incorporated
- Fantini Baking Co.
- Quality Die Cutting, Inc.
- Runtal North America, Inc.
- Seica, Inc
- Spruce Environmental Technologies, Inc.
- Joseph's Gourmet Pasta
- Southwick
- Mondelez International

SUPPLIERS/DISTRIBUTORS

- Merrimac Industrial Sales
- Wood Products Unlimited, Inc.
- Rogers Spring Hill Garden Center
- Winchester Interconnect
- Baril Corporation
- SiteOne Landscape Supply
- F.W. Webb
- Bradford Labs

AERIAL



R.W. HOLMES
COMMERCIAL REAL ESTATE

FOR INFORMATION CONTACT:

MIKE OGASAPIAN, SIOR
MIKEO@RWHOLMES.COM
(781) 439-5945

All information furnished regarding property for sale, rental or financing is from sources deemed reliable. No representation is made as to the accuracy thereof and is submitted subject to errors, omissions, change of price, rental or other conditions, prior sale, lease or financing, or withdrawal without notice.