



Property Information

Location:	1127 Judson Road Longview, Texas
Available Space:	Suite 144 – Approximately 1,217 SF
Amenities:	Located on Judson Road at the corner of Judson Road and Tupelo (just north of Marshall Avenue/Highway 80). Secured mailboxes with weekday service. Made simple with multiple entrance/exit options. Stairs and elevator centrally located. 5 days a week janitorial.

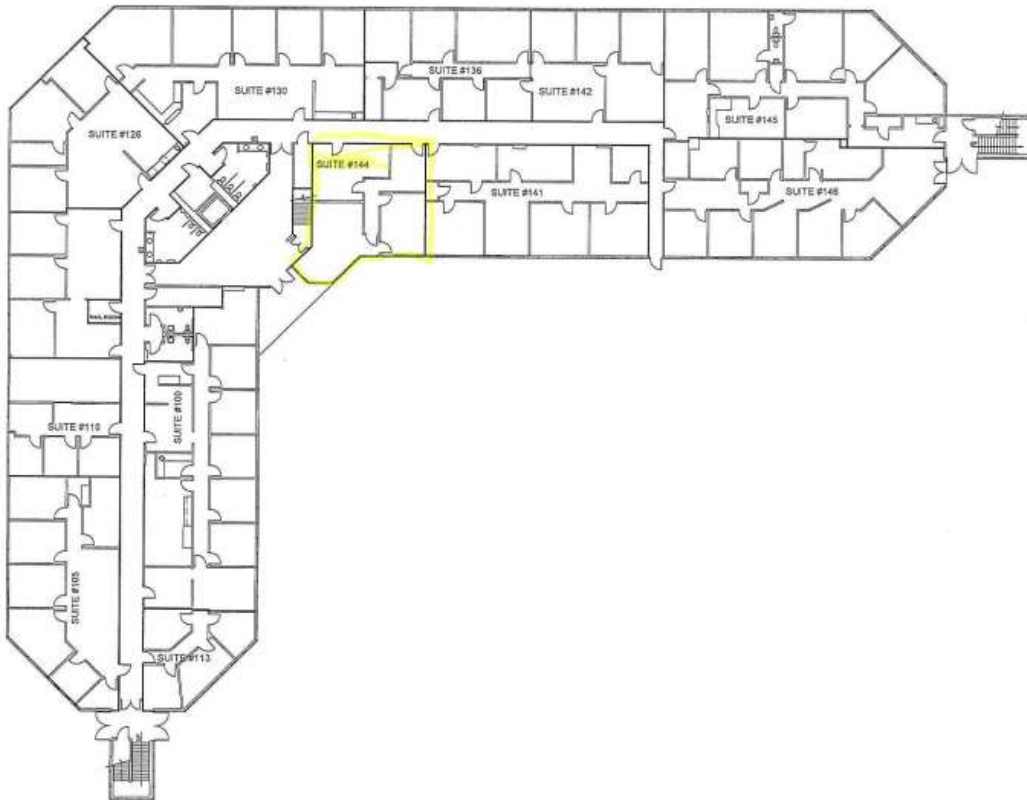
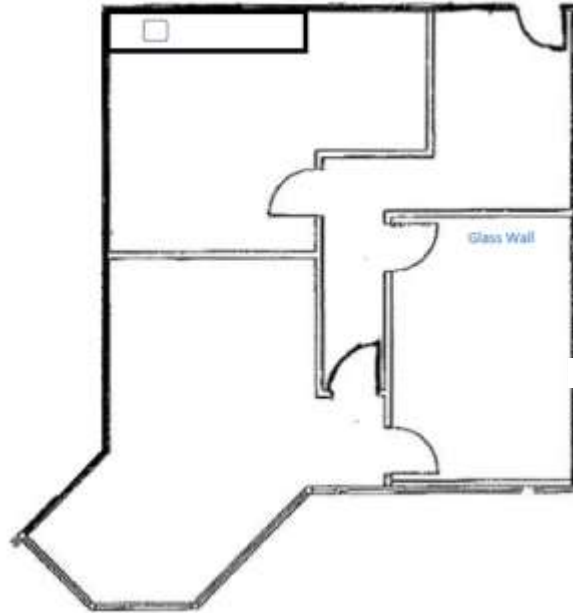
For more information:

Walter R. Northcutt
(903) 753-2191

wnorthcutt@beerwellseasttexas.com

AVAILABLE SPACE

(Actual Layout May Vary)



This information has been secured from sources we believe to be reliable, but we make no representations or warranties, expressed or implied, as to the accuracy of the information. References to square footage, boundaries or age are approximate. Those inquiring must verify the information and bears all risk for any inaccuracies.

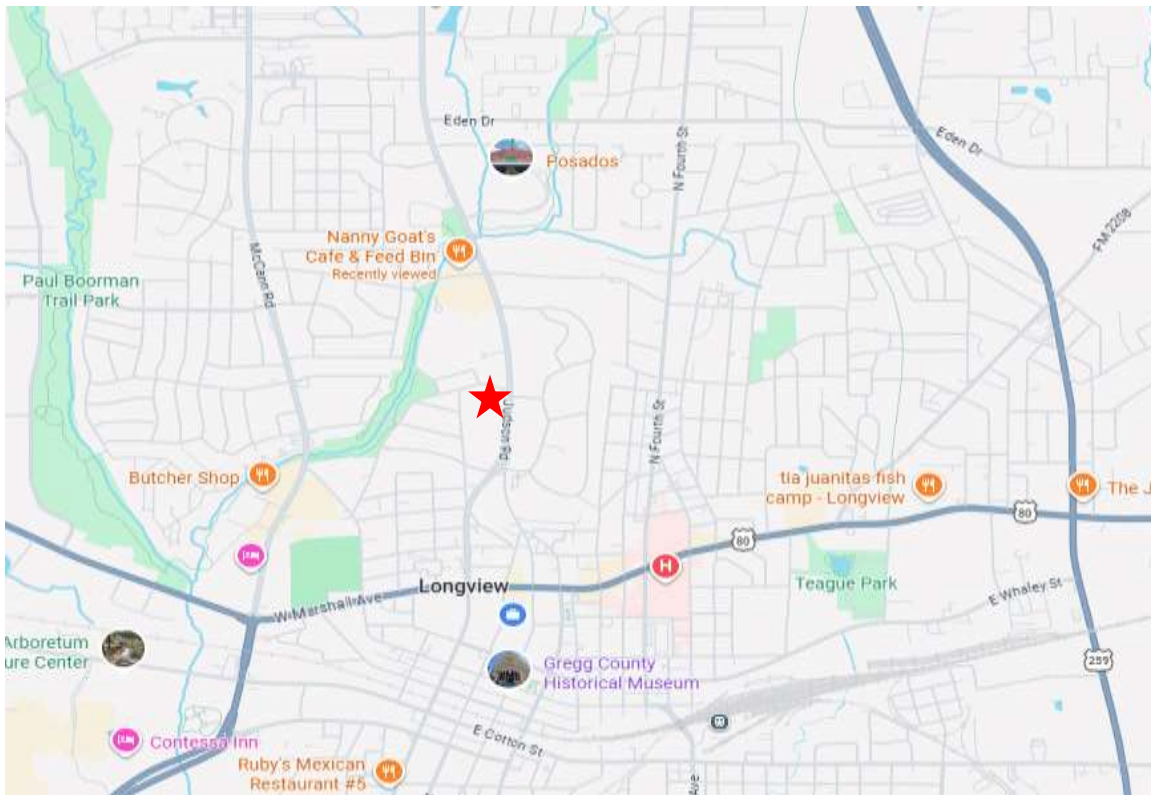
LOBBY



2ND FLOOR HALLWAY



AERIAL/MAP



This information has been secured from sources we believe to be reliable, but we make no representations or warranties, expressed or implied, as to the accuracy of the information. References to square footage, boundaries or age are approximate. Those inquiring must verify the information and bears all risk for any inaccuracies.

TRAFFIC COUNTS



This information has been secured from sources we believe to be reliable, but we make no representations or warranties, expressed or implied, as to the accuracy of the information. References to square footage, boundaries or age are approximate. Those inquiring must verify the information and bears all risk for any inaccuracies.