

YOSEMITE MEDICAL PLAZA

6886 S YOSEMITE ST. CENTENNIAL, CO

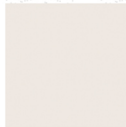
FOR LEASE



5 VIEW 1 - OPTION 1
ASR17



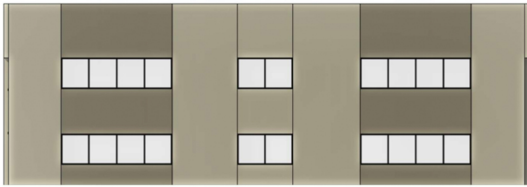
16 VIEW 2 - OPTION 1
ASR17



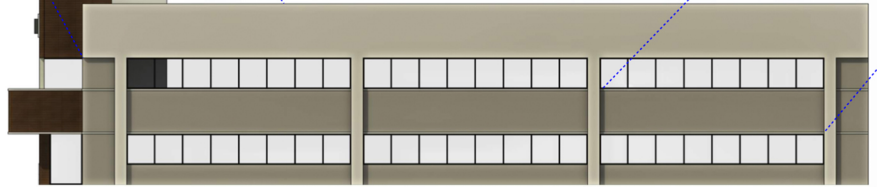
IVORY LACE SW7013



FAWN BRINDLE SW7640



4 EAST ELEVATION - OPTION 1
1/8" = 1'-0"



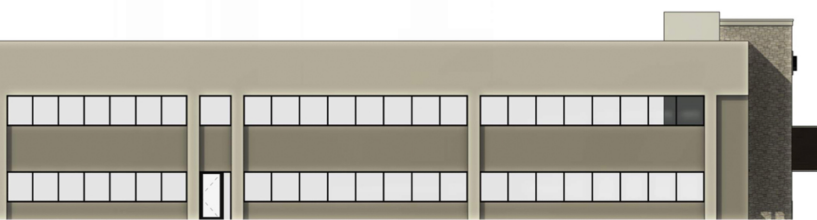
2 SOUTH ELEVATION - OPTION 1
1/8" = 1'-0"



SYNTHETIC STONE VENEER:
ELDORADO STONE
LIMESTONE IN GRAND BANKS



HORIZONTAL COMPOSITE SIDING:
NEWTech WOOD ALL WEATHER SIDING
PERUVIAN TEAK



PROPERTY FEATURES



This well-maintained facility is ideal for healthcare professionals looking to establish or expand their practice in a thriving area. The office features modern amenities, ample parking, and a layout designed for optimal patient flow and staff efficiency. Located in a bustling medical corridor with easy access to major roads and highways, this space offers excellent visibility and convenience for patients. Don't miss the opportunity to position your practice in this sought-after location!



7,500 SQ FT

**BUILDING SIZE
15,384 SF**

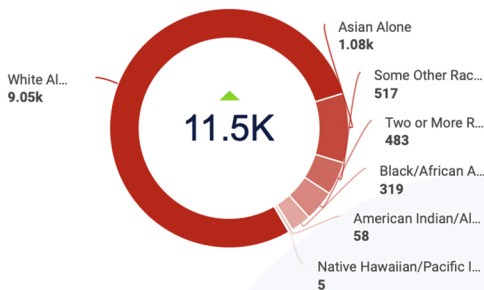


DEMO-GRAPHICS

High Density Populati...

481% Above your average location density

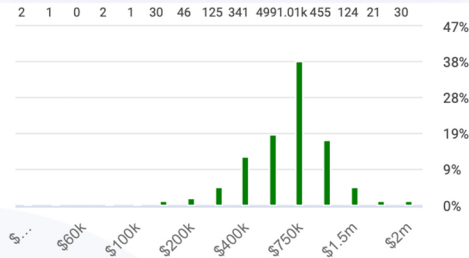
5.8K
5.7K



Median Home Value

147% more affluent than average site

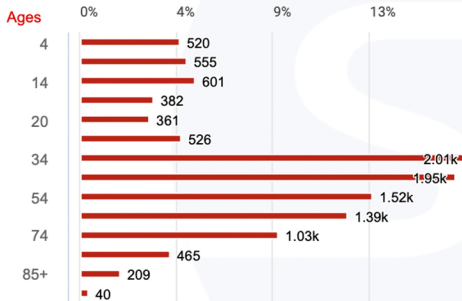
578K



Median Age

13% older than average site

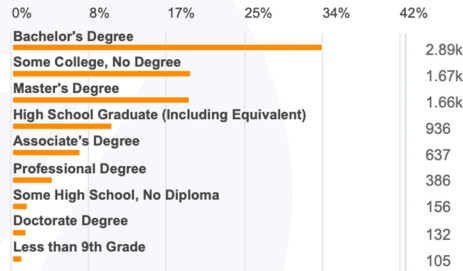
40 YEARS



Education

More Educated than average site

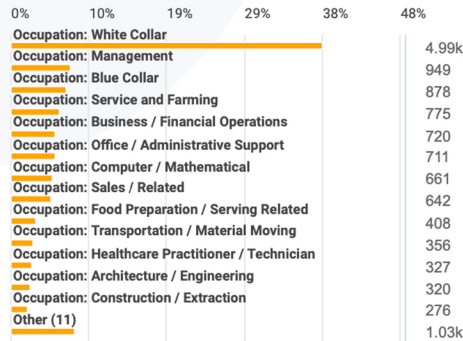
BACHELOR'S



Employed Workforce

542% more employed workforce than average site

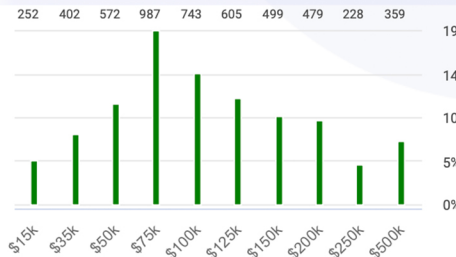
6.84K



Median Income

50% more affluent than average site

95.8K



INTERESTED?



For more information,
please contact:

STEPHEN@TOWER-BROKERS.COM
720.308.3200

DENVER

CENTENNIAL

